

NM OIL CONSERVATION
 DISTRICT OFFICE
 1220 S. St. Francis Dr., Santa Fe, NM 87505
 Phone: (505) 476-3460 Fax: (505) 476-3462

RECEIVED
 2-20-17

State of New Mexico
 Energy, Minerals & Natural Resources Department
OIL CONSERVATION DIVISION
 1220 South St. Francis Dr.
 Santa Fe, NM 87505

Form C-102
 Revised August 1, 2011
 Submit one copy to appropriate
 District Office

AMENDED REPORT

WELL LOCATION AND ACREAGE DEDICATION PLAT

API Number 30-015-44520	Pool Code 50371	Pool Name Pierce Crossing Bone Springs
Property Code 319809	Property Name CEDAR CANYON "20" FEDERAL COM	Well Number 26H
OGRID No. 116694	Operator Name OXY USA INC.	Elevation 2953.9'

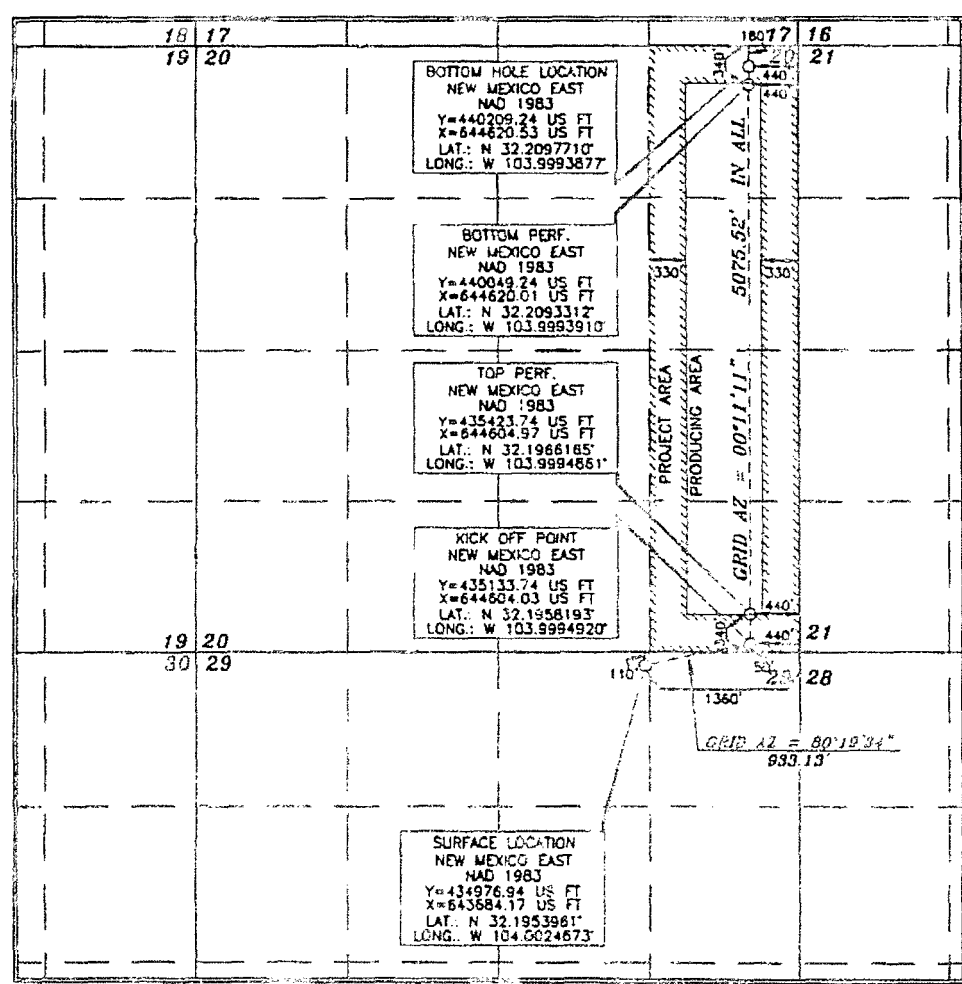
Surface Location

UL or lot no.	Section	Township	Range	Lot Idn	Feet from the	North/South line	Feet from the	East/West line	County
B	29	24 SOUTH	29 EAST, N.M.P.M.		110'	NORTH	1360'	EAST	EDDY

Bottom Hole Location If Different From Surface

UL or lot no.	Section	Township	Range	Lot Idn	Feet from the	North/South line	Feet from the	East/West line	County
A	20	24 SOUTH	29 EAST, N.M.P.M.		180'	NORTH	440'	EAST	EDDY
Dedicated Acres 160	Joint or Infill Y	Consolidation Code	Order No.						

No allowable will be assigned to this completion until all interests have been consolidated or a non-standard unit has been approved by the division.



OPERATOR CERTIFICATION

I hereby certify that the information contained herein is true and correct to the best of my knowledge and belief, and that this organization either owns a working interest or an undivided mineral interest in the land on which the project is located, or has a right to drill this well as the assignor pursuant to a contract with an owner of such a mineral or working interest, or as a beneficiary of such an agreement or a compulsory pooling order.

Signature: *David Stewart Sr.* Date: **5/3/17**
 David Stewart Sr., Reg. Adv.
 david.stewart@oxy.com
 E-mail Address

SURVEYOR CERTIFICATION

I hereby certify that the information shown on this plat was obtained from a true and correct survey made by me or under my supervision, and that the same is true and correct to the best of my knowledge.

Date of Survey: **FEBRUARY 14, 2017**
 Signature: *Terry Alford*
 Professional Surveyor
 Certificate No. **15079**