

NEW MEXICO OIL CONSERVATION DIVISION
SOUTHEAST NEW MEXICO PACKER LEAKAGE TEST

Revised 11/23/11

Operator EOG Y RESOURCES Well API # 30-005-63287
Location Of Well: Unit L Section 33 Township 9S Range 20E County CHAVES
Well Name & No. ALLIED AUS SH 2

	Name of Reservoir or Pool	Type of Prod. (Oil or Gas)	Method of Prod. (Flow Art. Lift)	Prod. Medium (Tbg. Or Cag.)	Choke Size
Upper Completion	<u>Wolfcamp</u>	<u>GAS</u>	<u>Flow</u>	<u>CSG</u>	<u>12/64</u>
Lower Completion	<u>ORDOVICIAN</u>	<u>GAS</u>	<u>Flow</u>	<u>TBG</u>	<u>24/64</u>

Both zones shut-in at (hour, date): 9:45 10-23-17 **FLOW TEST NO. 1**

Well opened at (hour, date): 12:30 PM 10/23/17

Indicate by (X) the zone producing.....

Pressure at beginning of test.....

Stabilized? (Yes or No).....

Maximum pressure during test.....

Minimum pressure during test.....

Pressure at conclusion of test.....

Pressure change during test (Maximum minus Minimum).....

Was pressure change an increase or a decrease?..... DECREASE INCREASE

Well closed at (hour, date): 10:45 AM 10/24/17 Total Time On Production 21.75 HRS

Oil Production 0 Gas Production 20

During Test: 0 bbls; Grav. N/A ; During Test 20 MCF; GOR N/A

Remarks: _____

Both zones shut-in at (hour, date): 10:45 AM 10/24/17 **FLOW TEST NO. 2**

Well opened at (hour, date): 11:00 AM 10/24/17

Indicate by (X) the zone producing.....

Pressure at beginning of test.....

Stabilized? (Yes or No).....

Maximum pressure during test.....

Minimum pressure during test.....

Pressure at conclusion of test.....

Pressure change during test (Maximum minus Minimum).....

Was pressure change an increase or a decrease?..... INCREASE DECREASE

Well closed at (hour, date): 8:45 10/25/17 Total Time On Production 22 HRS

Oil Production 0 Gas Production 20

During Test: 0 bbls; Grav. N/A ; During Test 20 MCF; GOR N/A

Remarks: _____

I hereby certify that the information herein contained is true and complete to the best of my knowledge.

Approved 11/14/17 20
New Mexico Oil Conservation Division

By Accepted for record
Title NMOCD RE

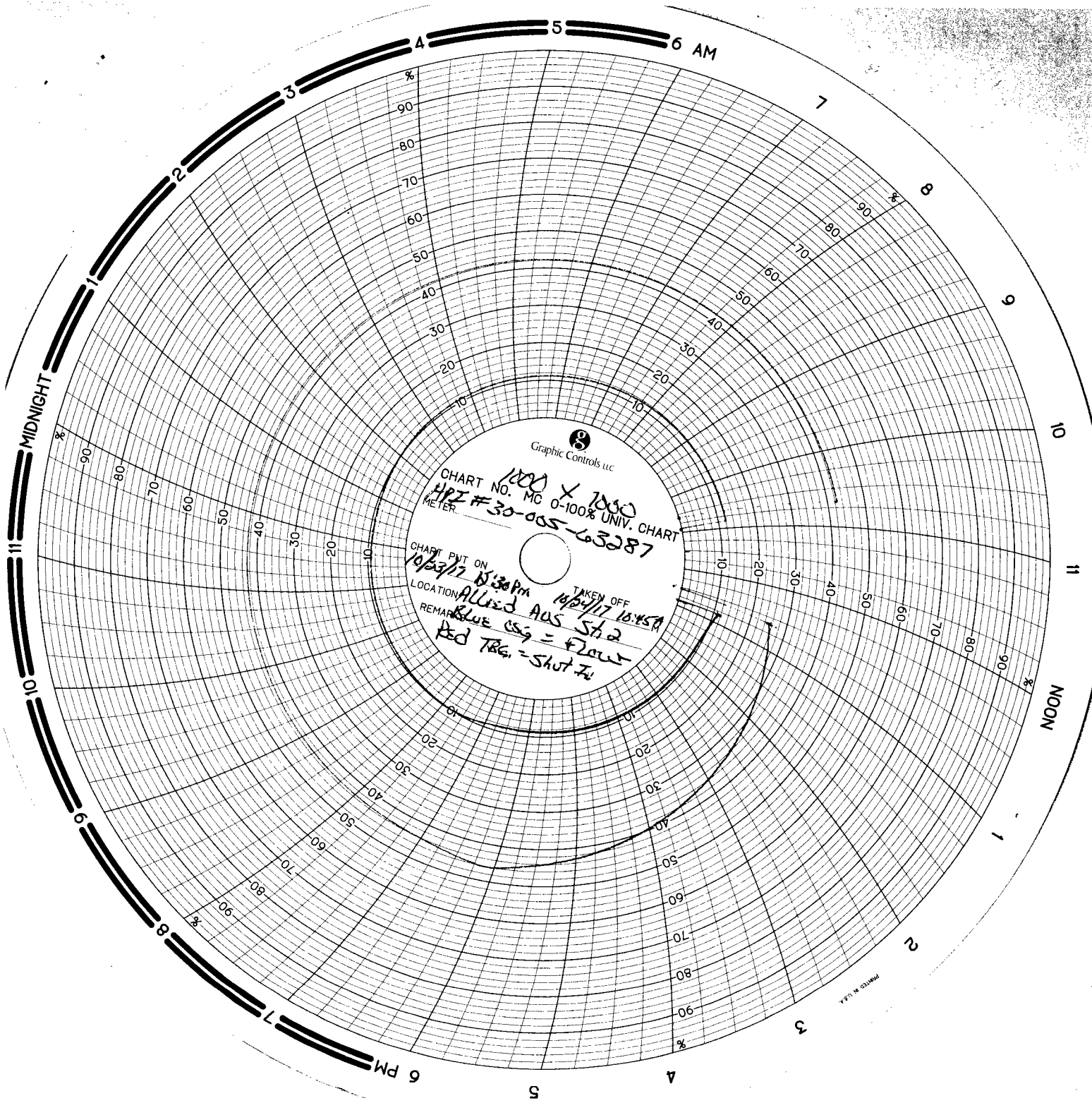
Operator EOG Y RESOURCES

By JEFF DECK

Title MEASUREMENT TECH III

E-mail Address deck@qwestoffice.net

Date 10/25/2017



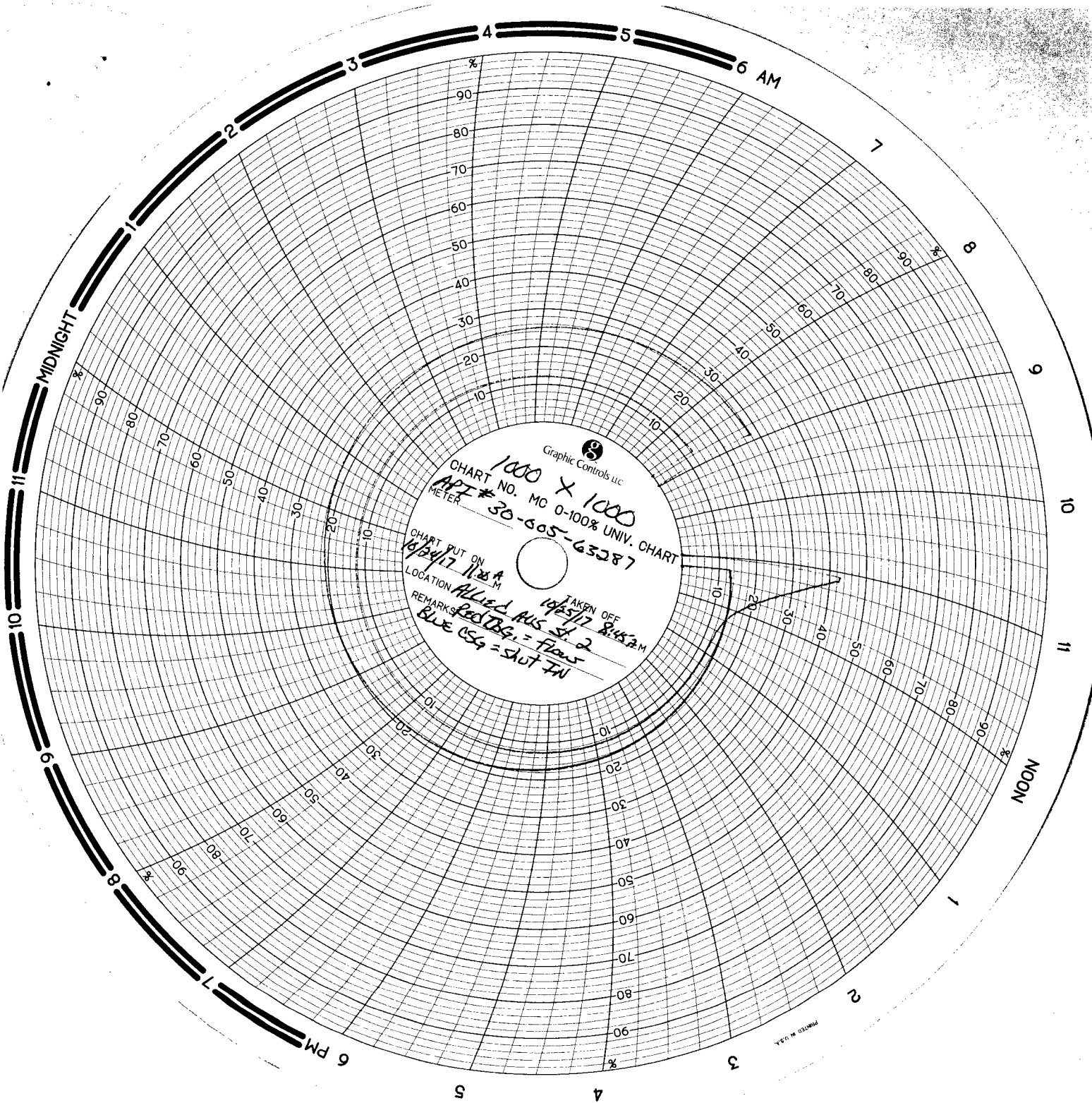
Graphic Controls LLC

CHART NO. MC 0-100% UNIV. CHART
HPZ # 30-005-63287

CHART PUT ON 10/29/17 15:30 PM
LOCATION ALLIED AUS SH2
REMARKS Blue CS9 = Flow
Red TR6 = Shot Fu

TAKEN OFF 10/29/17 18:45 PM

PRINTED IN U.S.A.



Graphic Controls LLC
CHART NO. MC 0-100% UNIV. CHART
APT # 30-605-63287
CHART PUT ON 10/24/17 11:25 AM
LOCATION Allied AUS St. 2
REMARKS Red Bag = Flow
Blue CS9 = Shut IN
TAKEN OFF 10/25/17 8:45 AM

PRINTED IN U.S.A.