

OCD-ARTESIA
NM OIL CONSERVATIONUNITED STATES
DEPARTMENT OF THE INTERIOR
BUREAU OF LAND MANAGEMENT

ARTESIA DISTRICT

DEC 04 2017

FORM APPROVED
OMB NO. 1004-0137
Expires: January 31, 2018**SUNDRY NOTICES AND REPORTS ON WELLS**
Do not use this form for proposals to drill or to re-enter an abandoned well. Use form 3160-3 (APD) for such proposals. **RECEIVED****SUBMIT IN TRIPLICATE - Other instructions on page 2**

1. Type of Well <input type="checkbox"/> Oil Well <input type="checkbox"/> Gas Well <input checked="" type="checkbox"/> Other: INJECTION		5. Lease Serial No. NMLC069108
2. Name of Operator BOPCO LP		6. If Indian, Allottee or Tribe Name
3a. Address 6401 Holiday Hill Rd PO BOX 2760 MIDLAND, TX 79702 Bldg 5 Suite 200		7. If Unit or CA/Agreement, Name and/or No.
3b. Phone No. (include area code) Ph: 432-683-2277		8. Well Name and No. POKER LAKE UNIT 71A
4. Location of Well (Footage, Sec., T., R., M., or Survey Description) Sec 33 T23S R30E Mer NMP NENW 660FNL 1980FWL		9. API Well No. 30-015-26084
		10. Field and Pool or Exploratory Area NASH DRAW; DELAWARE
		11. County or Parish, State EDDY COUNTY, NM

12. CHECK THE APPROPRIATE BOX(ES) TO INDICATE NATURE OF NOTICE, REPORT, OR OTHER DATA

TYPE OF SUBMISSION	TYPE OF ACTION			
<input checked="" type="checkbox"/> Notice of Intent	<input type="checkbox"/> Acidize	<input type="checkbox"/> Deepen	<input type="checkbox"/> Production (Start/Resume)	<input type="checkbox"/> Water Shut-Off
<input type="checkbox"/> Subsequent Report	<input type="checkbox"/> Alter Casing	<input type="checkbox"/> Hydraulic Fracturing	<input type="checkbox"/> Reclamation	<input type="checkbox"/> Well Integrity
<input type="checkbox"/> Final Abandonment Notice	<input type="checkbox"/> Casing Repair	<input type="checkbox"/> New Construction	<input type="checkbox"/> Recomplete	<input type="checkbox"/> Other
	<input type="checkbox"/> Change Plans	<input checked="" type="checkbox"/> Plug and Abandon	<input type="checkbox"/> Temporarily Abandon	
	<input type="checkbox"/> Convert to Injection	<input type="checkbox"/> Plug Back	<input type="checkbox"/> Water Disposal	

13. Describe Proposed or Completed Operation: Clearly state all pertinent details, including estimated starting date of any proposed work and approximate duration thereof. If the proposal is to deepen directionally or recompletable horizontally, give subsurface locations and measured and true vertical depths of all pertinent markers and zones. Attach the Bond under which the work will be performed or provide the Bond No. on file with BLM/BIA. Required subsequent reports must be filed within 30 days following completion of the involved operations. If the operation results in a multiple completion or recompletable in a new interval, a Form 3160-4 must be filed once testing has been completed. Final Abandonment Notices must be filed only after all requirements, including reclamation, have been completed and the operator has determined that the site is ready for final inspection.

BOPCO, LP respectfully submits this sundry notice of intent to plug and abandon the referenced well.

1. MIRU plugging company. ND tree and NU 3K manual BOP. Function test BOP. POOH and lay down IP tubing and packer.

2. RU WL. PU 5-1/2" CIBP, RIH to 4,420' and set. Tag CIBP to verify. Pump 25 sxs Class C cmt on top of CIBP. (Perf plug)

3. PUH to +/- 4,170', spot 9.5# salt gel from +/- 4,170' - 2,700'.

4. PUH to 3,700', spot 32 sxs G/C cmt from 3,700' - 3,470'. WOC & Tag. (T/Del, B/Salt)

**SUBJECT TO LIKE
APPROVAL BY STATE****SEE ATTACHED FOR
CONDITIONS OF APPROV.****WITNESS**

14. I hereby certify that the foregoing is true and correct. Electronic Submission #394342 verified by the BLM Well Information System For BOPCO LP, sent to the Carlsbad Committed to AFMSS for processing by JAMES AMOS on 11/13/2017 ()	
Name (Printed/Typed) TRACIE J CHERRY	Title REGULATORY ANALYST
Signature (Electronic Submission)	Date 11/07/2017

THIS SPACE FOR FEDERAL OR STATE OFFICE USE

Approved By <i>Paul R Swartz</i> 11/27/17	Title <i>TPET</i>	Date
Conditions of approval, if any, are attached. Approval of this notice does not warrant or certify that the applicant holds legal or equitable title to those rights in the subject lease which would entitle the applicant to conduct operations thereon.		
Office BUREAU OF LAND MANAGEMENT CARLSBAD FIELD OFFICE		

Title 18 U.S.C. Section 1001 and Title 43 U.S.C. Section 1212, make it a crime for any person knowingly and willfully to make to any department or agency of the United States any false, fictitious or fraudulent statements or representations as to any matter within its jurisdiction.

(Instructions on page 2)

**** OPERATOR-SUBMITTED ** OPERATOR-SUBMITTED ** OPERATOR-SUBMITTED ****

Additional data for EC transaction #394342 that would not fit on the form

32. Additional remarks, continued

5. RU WL. PU and RIH with jet cutter for 5-1/2" 15.5# casing. Cut casing at 2,700?. POOH and RD WL. Circulate 9.5# salt gel to from 2,700? to surface. Pull and LD 5-1/2? casing.

6. ~~RIH to 2,750?, spot 40 sxs Class C cmt 2,750' - 2,645' WOC and tag (Csg Stub plug).~~

7. ~~PUH to 690', spot 76 sxs CLC cmt from 690' - 570' WOC & Tag. (T/Salt Plug, 8-5/8" shoe)~~

8. PUH to 60', ^{Perf} spot 40 sxs Class C cmt from 60' to surface. Verify to surface (Surface plug).

9. ND BOP and cut off wellhead 5? below surface. RDMO equipment. Set P&A marker

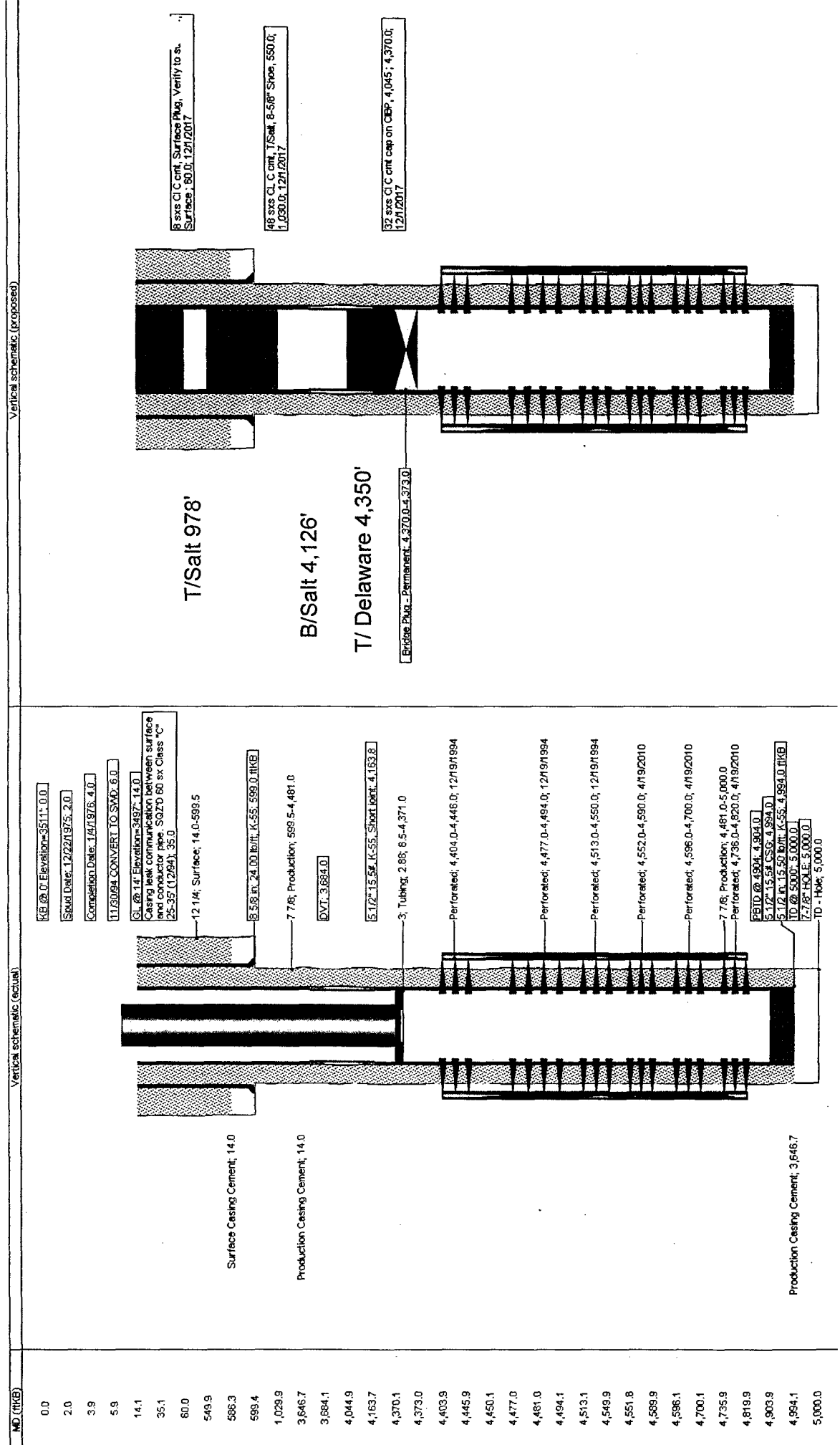
WITNESS

APPROVED

**SEE ATTACHED FOR
CONDITIONS OF APPROVAL**

Needed for PLU 71A (somebody goofed)

Poker Lake Unit #43 Current and Proposed WBD's



Conditions of Approval

BOPOCO, LP

**Poker Lake Unit - 71a, API 3001526094
T23S-R30E, Sec 33, 660FNL & 1980FWL
November 27, 2017**

1. **Within 90 days of these conditions of approval for the processed Electronic Submission #394342 notice of intent begin wellbore operations or request an extension.**
2. **Operator is required to have the BLM approved NOI procedure with applicable conditions of approval on location during this workover operation.**
3. Subject to like approval by the New Mexico Oil Conservation Division.
4. Notify 575-361-2822 Eddy Co as work begins. If there is no response leave a voice mail with the API#, workover purpose, and a call back phone number.
5. Surface disturbance beyond the existing pad must have prior approval.
6. A closed loop system is required. The operator shall properly dispose of drilling/circulating contents at an authorized disposal site. Tanks are required for all operations, no excavated pits.
7. Functional H₂S monitoring equipment shall be on location.
8. Blow Out Prevention Equipment 3000 (3M) to be used. All BOPE and workover procedures shall establish fail safe well control. Ram(s) for the work string(s) used is required equipment. Manual BOP closure system including a blind ram and pipe ram(s) designed to close on all (hand wheels or automatic locking devices) equipment installed regardless of BOP design. Function test the installed BOPE to 500psig when well conditions allow. Related equipment, (choke manifolds, kill trucks, gas vent or flare lines, etc.) employed when needed for reasonable well control requirements.
9. Created operation waste (i.e. trash, salts, chemicals, sewage, gray water, etc.) shall be safely contained and disposed of properly at a waste disposal facility. No waste material or fluid shall be disposed of on the well location or surrounding area. Porto-johns and trash containers will be on-location during any other crew-intensive operations.
10. The BLM PET is to run tbg tally and agree to cement volumes and placement. Sample each plug for cement curing time and tag and/or pressure test as requested by BLM PET witness.
11. **Cementing procedure is subject to the next three numbered paragraphs.**
12. Mix cement plugs to cover a minimum of 100ft plus 10ft for every 1,000ft to the bottom of the plug, rounding the number of necessary sacks up to the nearest 5 sacks. Never use less than 25sx. Examples: A cement plug set at 8000 in 7" casing would require a min of 35sx. A 25sx plug in 5 ½" casing should cover 250ft, which may exceed 100ft plus 10ft per 1000ft.
13. For any Class "C" neat cement plug that requires a tag or pressure test a minimum WOC time of 4 hours recommended. Isolation plugs of Class "C" neat cement to be mixed 14.8#/gal, 1.32 ft³/sx, 6.3gal/sx water.
14. Minimum requirement for mud placed between plugs is 25 sacks of saltwater gel per 100 barrels in 9 lb/gal brine.
15. **Set a 248ft (±25sx) balanced "C" cmt plug across DV Tool from 5860' or below. WOC, and tag the plug with tbg.**

16. Pressure test the 5 1/2" casing after a CIBP is set within 100' of the top perf 4470'.
17. Set a 248ft (±25sx) balanced "C" cmt plug on the CIBP to be set at 4420' or below. WOC, and tag the plug with tbg.
18. Set a min 35sx balanced "C" cmt plug from 3880' or below across the Delaware formation top, Base of Salt and the 13 3/8" csg shoe. WOC, and tag the plug with tbg at 3500' or above.
19. The well is located in the R-111-P Secretary Potash area and requires a solid cement plug across the salt section.
20. Determine TOC in the 5 1/2" x 13 3/8" annulus with a free point or CBL.
21. Cut and pull the 5 1/2" casing as deep as possible.
22. Perf the 5 1/2" csg just above the last plug and set a balanced cmt plug (about 1880sx) to cover the Salt Section. WOC, and tag the plug with tbg at 550' or above.
23. Perf at 60' or below. Establish circulation through the 13 3/8" x 20" annulus. Fill with balanced "C" cmt plug and verify the 13 3/8" x 20" annulus from 60' cemented to surface.
24. File subsequent sundry Form 3160-5 within 30 days of workover procedures. Include (dated daily) descriptions of the well work, i.e. procedure descriptions and setting depths of each plug in the subsequent sundry.

Reclamation Objectives and Procedures

In Reply Refer To: 1310

Reclamation Objective: At final abandonment, well locations, production facilities, and access roads must undergo “final” reclamation so that the character and productivity of the land and water are restored.

The long-term objective of final reclamation is to set the course for eventual ecosystem restoration, including the restoration of the natural vegetation community, hydrology, and wildlife habitats. In most cases this means returning the land to a condition approximating or equal to that which existed prior to the disturbance. The final goal of reclamation is to restore the character of the land and water to its pre-disturbance condition. The operator is generally not responsible for achieving full ecological restoration of the site. Instead, the operator must achieve the short-term stability, visual, hydrological, and productivity objectives of the surface management agency and take steps necessary to ensure that long-term objectives will be reached through natural processes.

To achieve these objectives, remove any and all contaminants, scrap/trash, equipment, pipelines and powerlines. Strip and remove caliche, contour the location to blend with the surrounding landscape, re-distribute the native soils, provide erosion control as needed, rip and seed as needed. This will apply to well pads, facilities, and access roads. Barricade all access road(s) at the starting point. If reserve pits have not been adequately reclaimed due to salts or other contaminants, propose a plan for BLM approval to provide restoration of the pit area.

1. The Application for Permit to Drill or Reenter (APD, Form 3160-3), Surface Use Plan of Operations should have included adequate measures for stabilization and reclamation of disturbed lands. Oil and Gas operators must plan for reclamation, both interim and final, up front in the APD process as per Onshore Oil and Gas Order No. 1.
2. For locations and/or access roads not having an approved plan, or an inadequate plan for surface reclamation the operator must submit a proposal describing the procedures for reclamation. The appropriate time for submittal would be when filing the Notice of Intent, or with the Subsequent Sundry Report of Abandonment on Form 3160-5. The final reclamation goal is to be completed within 6 months of wellbore abandonment.
3. With an approved Surface Use Plan of Operation and/or an approved Sundry Notice, you are free to proceed with reclamation as per approved APD. If you have issues or concerns, contact a BLM specialist to assist you. It may be in your interest to have a BLM specialist look at the location and access road prior to the removal of reclamation equipment to ensure that it meets BLM objectives.
4. Upon reclamation conclusion submit a Form 3160-5, Subsequent Report of Reclamation. This will prompt a BLM specialist to inspect the location to verify work was completed as per approved plans.

5. The BLM approved Subsequent Report of Reclamation will be your notice that the native soils, contour and seedbed have been tentatively reestablished. If the objectives have not been met BLM will be notify the operator of the required corrective actions.
6. It is the responsibility of the operator to monitor these locations and/or access roads until such time the full BLM objective has been met. If after two growing seasons the location and/or access roads are not showing the potential for successful revegetation, additional actions may be needed. When you feel the full BLM objectives have been met, submit a Final Abandonment Notice (FAN) Form 3160-5, stating that all reclamation requirements have been achieved and the location and/or access road is ready for a final abandonment inspection.
7. At this time a BLM specialist will again inspect the location and/or access road. If the native soils and contour have been restored, and the revegetation is successful, the FAN will be approved, releasing the operator of any further liability for the location and/or access road. If the location and/or access road have not achieved the objective, you will be notified as to additional work needed or additional time being needed to achieve the objective.

If there are any questions, please feel free to contact any of the following specialists:

Jim Amos
Supervisory Environmental Protection Specialist
575-234-5909, 575-361-2648 (Cell)

Robertson, Jeffery
Natural Resource Specialist
575-234-2230, 575-706-1920 (Cell)

Trishia Bad Bear
Natural Resource Specialist
575-393-3612, 575-390-2258 (Cell)

Vance Wolf
Natural Resource Specialist
575-234-5979

Jesse Bassett
Natural Resource Specialist
575-234-5913, 575-499-5114 (Cell)

Brooke Wilson
Natural Resource Specialist
575-234-6237

Paul Murphy
Natural Resource Specialist
757-234-5975, 575-885-9264 (Cell)

Arthur Arias
Environmental Protection Specialist
575-234-6230, 575-499-3378 (Cell)

Henryetta Price
Environmental Protection Specialist
575-234-5951, 575-706-2780 (Cell)

Shelly Tucker
Environmental Protection Specialist
575-234-5905, 575-361-0084 (Cell)

Operator: BOPCO, L.P.
 Surface Lease: LC069108
 Producing Lse No: LC069108
 Unit or CA No: N. A.
 Subsurface Concerns for Casing Designs: R111P K

Well Status: WDW
 Spud date: 3/25/1989
 NMOCD Max Inj psig : 894
 Last WK inspc: .
 Inspec Tbg psig: no gauge
 Inspec Csg psig: no gauge

Well: Poker Lake Unit - 071A
 API: 3001526084
 @ Srfce: T23S-R30E, Sec 33, 660FNL & 1980FWL
 @ M TD: N. A.

KB: 3364
 GL: 3349
 Corr: 15



35sx plug at surface 05/1990
 310 tag TOC, 1" to sfc
 75sx plug at 608 05/1990
 618, 26" hole, 20" csg, 94#

Srf Csg Wt: 94.00
 Srf Csg ID: 19.1240
 Srf Csg ft/bbl: 2.8147
 S Hole - S Csg ft/bbl: 3.7298
 S Csg - I Csg ft/bbl: 5.5097
 Srf Csg - WS ft/bbl: 2.8588
 Cmt: 1175sx, 0sx circ
 1' w/550sx, circ cmt

Abandoned 05/1990 Wellbore - Reentry SideTrack began July 2001 at 5967' KOP



(3752 Lamar)
 3753, 17.5" hole, 13.375" csg, 68#, 72#
 (3779 Delaware)
 225sx plug at 3800, tag 3683 05/1990
 (4710 Cherry Canyon)
 (4831 Manzanita)

1st Intrm Hole: 17 1/2
 Hole ft/bbl: 3.3614
 I Hole - I Csg ft/bbl: 8.0828
 1st Intrm Csg OD: 13.3750
 1st Intrm Csg Wt: 68.0000
 1st Intrm Csg ID: 12.4150
 1st Intrm Csg ft/bbl: 6.6788
 I Csg - I Csg ft/bbl: 16.7407
 Cmt: 3000sx, 400sx circ

Plug not found on reentry 07/21/2001

75sx plug at 5750 05/1990
 5996 KOP SideTrack 07/2001
 (5977 Brushy Canyon)
 5998 tag TOC 07/15/2001

2nd Intrm Hole: 12 1/4
 Hole ft/bbl: 6.8599
 2nd Intrm Hole - WS ft/bbl: 7.1278
 I Hole - I Csg ft/bbl: 17.9272
 2nd Intrm Csg OD: 9 5/8
 2nd Intrm Csg Wt: 47.00
 2nd Intrm Csg ID: 8.6810
 2nd Intrm Csg ft/bbl: 13.6600
 2nd I - P Csg ft/bbl: 22.8202
 2nd I Csg - WS ft/bbl: 14.7652

Plug not found on reentry 07/21/2001

6029 300sx "H" 07/13/2001
 6213 cut off 9 5/8" 05/1990
 75sx plug at 6390, tag 6215 05/1990
 (7648 Bone Spring)
 75sx plug at 8100 05/1990
 (10,938 Wolfcamp)
 10,952 TOL, CBL ran 06/09/1989
 11,050 50sx plug 05/1990
 11145, 12.25" hole, 9.625" csg, 47#, 53.5#
 10,952-14,779 mill out liner 06/14-17/1989

Cmt: 1700sx

4/25/1989

(12,872 Strawn)
 13,150 CIBP w/ 50' cmt cap 05/1990
 (13,164 Atoka)
 <13,202-06 08/10/1989>
 <13,292-93 07/29/89> Sqz w/155sx
 <13,317-32 08/04/1989>
 12,850-13,490 CBL 08/03/1989
 (13,730 Morrow)
 14,101 tight spot on Pkr
 14,200 CIBP w/50' cmt cap 07/28/1989
 <14,226-66, 341-59 06/22/1989>
 <14,471-522 06/28/1989> w/Pkr at 14,179
 14,779 PBDT
 14822, 8.5" hole, 5.5" csg, 23#

Prod Hole: 8 1/2
 Hole ft/bbl: 14.2479
 P Hole - WS ft/bbl: 15.4545
 P Hole - Csg ft/bbl: 24.5099
 Prod Csg OD: 5 1/2
 Prod Csg Wt: 23.00
 Prod Csg ID: 4.6700
 Prod Csg ft/bbl: 47.2016
 P Csg - WS ft/bbl: 63.6688

Cmt: 200sx

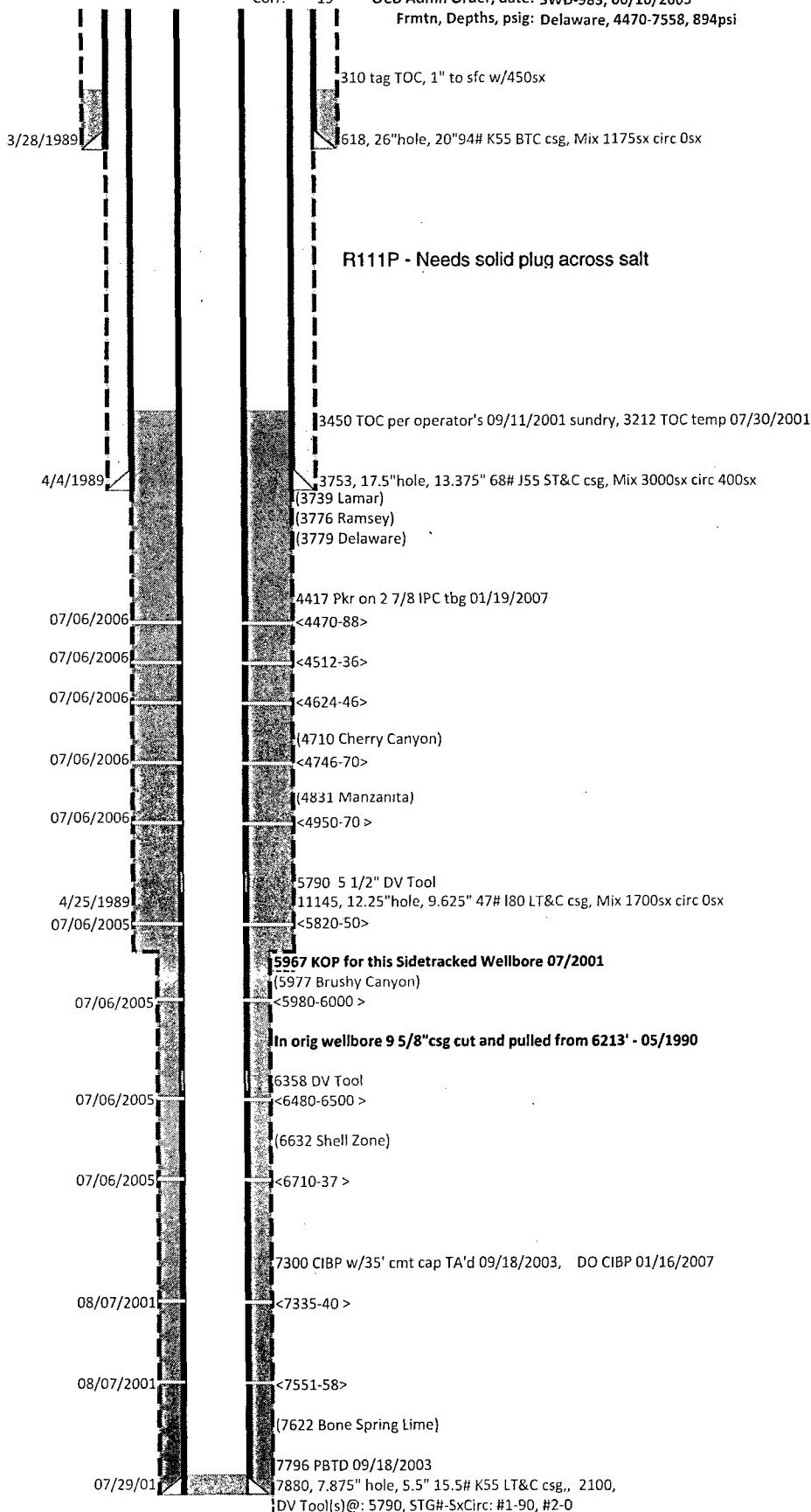
5/25/1989

Operator: BOPCO, L.P.
Surface Lease: LC069108
Case No: LC069108
Subsurface Concerns for Casing Designs: R111P HiCvKst
Well Status: WDWSI
Spud date: 7/9/2001
Plug'd Date: 05/??/1990
Reentry Date: 07/21/01

BHL: LC069108
Lease Agreement
HiCvKst

Well: POKER LAKE UNIT-71
API: 3001526084
@ Srfce: T23S-R30E,33.660n1980w
@ M TD: T23S-R30E,33.660n1980w
Estate: F&F
CWDW, R of W:
OCD Admn Order, date: SWD-983, 06/10/2005
Frmtn, Depths, psig: Delaware, 4470-7558, 894psi

KB: 3454
GL: 3439
Corr: 15



07/06/2005 Convert to Injection
07/12/2005 MIT held 430psig 30m
01/19/2007 MIT held 500psig OK
10/19/2010 MIT held 540 to 560psig 30m
10/21/2015 MIT held 580 to 510psig 30m