

**NM OIL CONSERVATION
ARTESIA DISTRICT**

FEB 27 2018 Form C-102

Revised August 1, 2011

RECEIVED Copy to appropriate
District Office

☐ AMENDED REPORT

District I
1625 N. French Dr., Hobbs, NM 88240
Phone: (575) 393-6161 Fax: (575) 393-0720
District II
811 S. First St., Artesia, NM 88210
Phone: (575) 748-1283 Fax: (575) 748-9720
District III
1000 Rio Brazos Road, Aztec, NM 87410
Phone: (505) 334-6178 Fax: (505) 334-6170
District IV
1220 S. St. Francis Dr., Santa Fe, NM 87505
Phone: (505) 476-3460 Fax: (505) 476-3462

State of New Mexico
Energy, Minerals & Natural Resources Department
OIL CONSERVATION DIVISION
1220 South St. Francis Dr.
Santa Fe, NM 87505

WELL LOCATION AND ACREAGE DEDICATION PLAT

¹ API Number 30-015-44788	² Pool Code —	³ Pool Name WILDCAT S2430062; LOWER BONE SPRING
⁴ Property Code 320839	⁵ Property Name MACHO GRANDE STATE 23-29-32 SB	
⁷ OGRID No. 372098	⁸ Operator Name MARATHON OIL PERMIAN LLC	⁶ Well Number 7H
		⁹ Elevation 2989'

¹⁰ Surface Location

UL or lot no.	Section	Township	Range	Lot Idn	Feet from the	North/South line	Feet from the	East/West line	County
P	32	23S	29E		272	SOUTH	660	EAST	EDDY

¹¹ Bottom Hole Location If Different From Surface

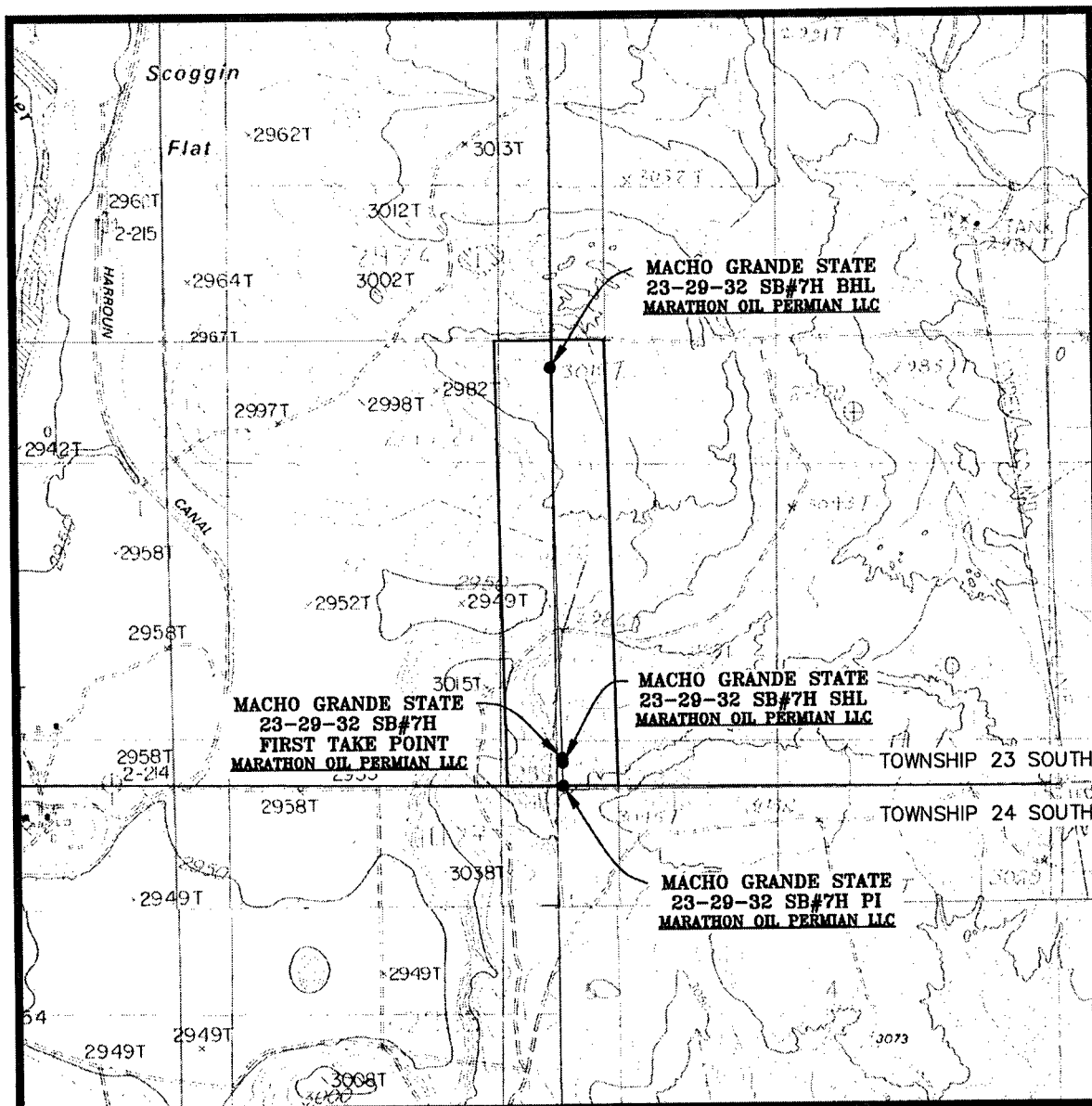
UL or lot no.	Section	Township	Range	Lot Idn	Feet from the	North/South line	Feet from the	East/West line	County
A	32	23S	29E		330	NORTH	661	EAST	EDDY

¹² Dedicated Acres 160.00	¹³ Joint or Infill	¹⁴ Consolidation Code	¹⁵ Order No.
---	-------------------------------	----------------------------------	-------------------------

No allowable will be assigned to this completion until all interests have been consolidated or a non-standard unit has been approved by the division.

<p>¹⁶</p> <p>LAST TAKE POINT/BOTTOM HOLE LOCATION 330' FSL 661' FEL SECTION 32 NAD 83, SPCS NM EAST Y:461270.33' / X:644201.28' LAT:32.26766848N / LON:104.00053226W NAD 27, SPCS NM EAST Y:461211.04' / X:603017.85' LAT:32.26754626N / LON:104.00004142W</p> <p>SECTION 30 SECTION 29 SECTION 31 SECTION 32</p> <p>FIRST TAKE POINT 330' FSL 662' FEL SECTION 32 NAD 83, SPCS NM EAST Y:456645.87' / X:644300.36' LAT:32.25495572N / LON:104.00025813W NAD 27, SPCS NM EAST Y:456586.69' / X:603116.80' LAT:32.25483336N / LON:103.99976778W</p> <p>SURFACE HOLE LOCATION 272' FSL 660' FEL SECTION 32 NAD 83, SPCS NM EAST Y:456587.90' / X:644304.48' LAT:32.25479633N / LON:104.00024539W NAD 27, SPCS NM EAST Y:456528.72' / X:603120.91' LAT:32.25467400N / LON:103.99975505W</p> <p>T23S SECTION 31 SECTION 32 T24S SECTION 6 SECTION 5</p> <p>CORNER COORDINATES NAD 83, SPCS NM EAST A - Y: 461599.04' / X: 643533.08' B - Y: 461601.59' / X: 644855.07' C - Y: 456311.03' / X: 644969.85' D - Y: 456320.59' / X: 643644.74'</p> <p>CORNER COORDINATES NAD 27, SPCS NM EAST A - Y: 461539.75' / X: 602349.67' B - Y: 461542.29' / X: 603671.64' C - Y: 456251.85' / X: 603786.27' D - Y: 456261.42' / X: 602461.17'</p>		<p>¹⁷ OPERATOR CERTIFICATION</p> <p>I hereby certify that the information contained herein is true and complete to the best of my knowledge and belief, and that this organization either owns a working interest or unleased mineral interest in the land including the proposed bottom hole location or has a right to drill this well at this location pursuant to a contract with an owner of such a mineral or working interest, or to a voluntary pooling agreement or a compulsory pooling order heretofore entered by the division.</p> <p><i>Jennifer Van Curen</i> 2/27/18 Signature Date</p> <p>Jennifer Van Curen Printed Name</p> <p>E-mail Address</p> <p>¹⁸ SURVEYOR CERTIFICATION</p> <p>I hereby certify that the well location shown on this plat was plotted from field notes of actual surveys made by me or under my supervision, and that the same is true and correct to the best of my belief.</p> <p>FEBRUARY 07, 2018 Date of Survey</p> <p>Signature and Seal of Professional Surveyor <i>Lloyd P. Short</i></p> <p>Certificate Number LLOYD P. SHORT 21653</p>
--	--	--

LOCATION VERIFICATION MAP

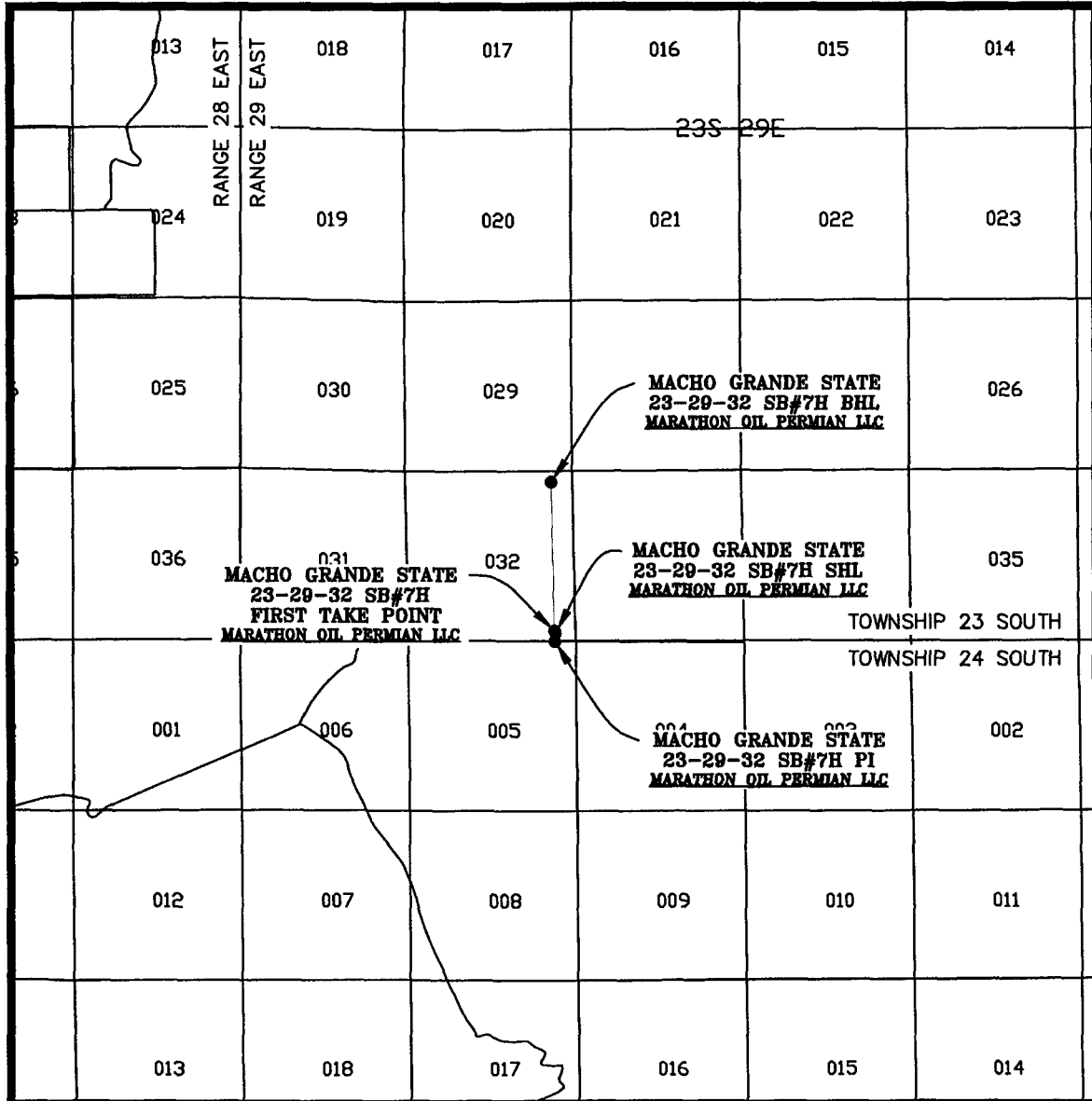


SEC. 32 TWP. 23-S RGE. 29-E
 SURVEY: N.M.P.M.
 COUNTY: EDDY
 DESCRIPTION: 272' FSL & 660' FEL
 ELEVATION: 2989'
 OPERATOR: MARATHON OIL PERMIAN LLC
 LEASE: MACHO GRANDE 23-29-32
 U.S.G.S. TOPOGRAPHIC MAP: LOVING, N.M. & REMUDA BASIN, N.M.

SCALE: 1" = 2000'
 CONTOUR INTERVAL = 10'

PREPARED BY:
 R-SQUARED GLOBAL, LLC
 1309 LOUISVILLE AVENUE, MONROE, LA 71201
 318-323-6900 OFFICE
 JOB No. R3840_001

VICINITY MAP



SEC. 32 TWP. 23-S RGE. 29-E

SCALE: 1" = 1 MILE

SURVEY: N.M.P.M.

COUNTY: EDDY

DESCRIPTION: 272' FSL & 660' FEL

ELEVATION: 2989'

OPERATOR: MARATHON OIL PERMIAN LLC

LEASE: MACHO GRANDE 23-29-32

U.S.G.S. TOPOGRAPHIC MAP: LOVING, N.M. & REMUDA BASIN, N.M.

PREPARED BY:
R-SQUARED GLOBAL, LLC
1309 LOUISVILLE AVENUE, MONROE, LA 71201
318-323-6900 OFFICE
JOB No. R3840_001