

UNITED STATES
DEPARTMENT OF THE INTERIOR
BUREAU OF LAND MANAGEMENT

OCD Artesia

FORM APPROVED
OMB NO. 1004-0137
Expires: January 31, 2018**SUNDRY NOTICES AND REPORTS ON WELLS**
*Do not use this form for proposals to drill or to re-enter an abandoned well. Use form 3160-3 (APD) for such proposals.*5. Lease Serial No.
NMLC028784A ✓

6. If Indian, Allottee or Tribe Name

7. If Unit or CA/Agreement, Name and/or No.
NMNM88525X ✓8. Well Name and No.
BURCH KEELY UNIT 944H ✓9. API Well No.
30-015-44079-00-X1 ✓10. Field and Pool or Exploratory Area
BURCH KEELY-GLORIETA-UPPER YE

11. County or Parish, State

EDDY COUNTY, NM ✓

SUBMIT IN TRIPLICATE - Other instructions on page 2

1. Type of Well

☒ Oil Well ☐ Gas Well ☐ Other

2. Name of Operator

✓ COG OPERATING LLC

Contact: KANICIA CASTILLO

E-Mail: kcastillo@concho.com

3a. Address

600 W ILLINOIS AVENUE
MIDLAND, TX 79701

3b. Phone No. (include area code)

Ph: 432-685-4332

4. Location of Well (Footage, Sec., T., R., M., or Survey Description)

✓ Sec 13 T17S R29E SESE 1035FSL 149FEL
32.830124 N Lat, 104.020149 W Lon**12. CHECK THE APPROPRIATE BOX(ES) TO INDICATE NATURE OF NOTICE, REPORT, OR OTHER DATA**

TYPE OF SUBMISSION

☐ Notice of Intent☒ Subsequent Report☐ Final Abandonment Notice

TYPE OF ACTION

☐ Acidize☐ Alter Casing☐ Casing Repair☐ Change Plans☐ Convert to Injection☐ Deepen☐ Hydraulic Fracturing☐ New Construction☐ Plug and Abandon☐ Plug Back☐ Production (Start/Resume)☐ Reclamation☐ Recomplete☐ Temporarily Abandon☐ Water Disposal☐ Water Shut-Off☐ Well Integrity☒ Other
Site Facility Diagram/Security Plan

13. Describe Proposed or Completed Operation: Clearly state all pertinent details, including estimated starting date of any proposed work and approximate duration thereof. If the proposal is to deepen directionally or recompleate horizontally, give subsurface locations and measured and true vertical depths of all pertinent markers and zones. Attach the Bond under which the work will be performed or provide the Bond No. on file with BLM/BIA. Required subsequent reports must be filed within 30 days following completion of the involved operations. If the operation results in a multiple completion or recompleation in a new interval, a Form 3160-4 must be filed once testing has been completed. Final Abandonment Notices must be filed only after all requirements, including reclamation, have been completed and the operator has determined that the site is ready for final inspection.

Please see attached facility diagram for the following new wells:

Burch Keely Unit 944H API# 30-015-44079 ✓

Burch Keely Unit 962H API# 30-015-44101 ✓

Accepted for Record Purposes.

Approval Subject to Onsite Inspection.

Date: 2-13-18

McKinney

NATURAL OIL CONSERVATION
ARTESIA DISTRICT

FEB 26 2018

SC 2-27-18
Accepted for record - NMOCD

RECEIVED

Fac. ID = BKU 13 E

14. I hereby certify that the foregoing is true and correct.

Electronic Submission #386208 verified by the BLM Well Information System

For COG OPERATING LLC, sent to the Carlsbad

Committed to AFMSS for processing by PRISCILLA PEREZ on 09/28/2017 (17PP1004SE)

Name (Printed/Typed) KANICIA CASTILLO

Title PREPARER

Signature

(Electronic Submission)

Date 08/25/2017

THIS SPACE FOR FEDERAL OR STATE OFFICE USE

Approved By

Title

Date

Conditions of approval, if any, are attached. Approval of this notice does not warrant or certify that the applicant holds legal or equitable title to those rights in the subject lease which would entitle the applicant to conduct operations thereon.

Office

Title 18 U.S.C. Section 1001 and Title 43 U.S.C. Section 1212, make it a crime for any person knowingly and willfully to make to any department or agency of the United States any false, fictitious or fraudulent statements or representations as to any matter within its jurisdiction.

(Instructions on page 2)

** BLM REVISED ** BLM REVISED ** BLM REVISED ** BLM REVISED ** BLM REVISED **

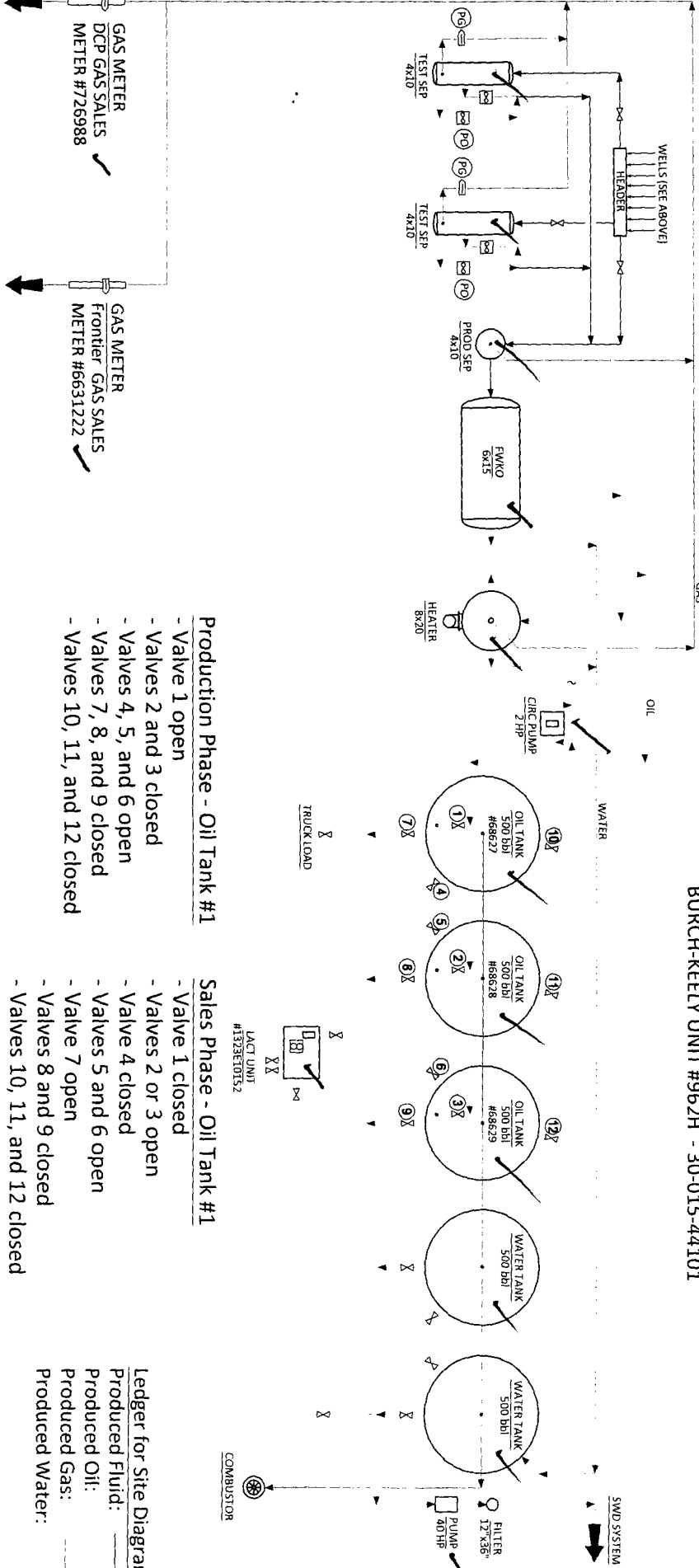
SITE FACILITY DIAGRAM

BKU 13B BATTERY
SECT 13, T17S, R29E
LEASE NO.: NMMNM88525X

WELLS:

BURCH-KEELY UNIT #32 - 30-015-20398
BURCH-KEELY UNIT #387 - 30-015-33812
BURCH-KEELY UNIT #391 - 30-015-33805
BURCH-KEELY UNIT #392 - 30-015-33809
BURCH-KEELY UNIT #537 - 30-015-40182
BURCH-KEELY UNIT #539 - 30-015-40319
BURCH-KEELY UNIT #540 - 30-015-40321
BURCH-KEELY UNIT #541 - 30-015-40662
BURCH-KEELY UNIT #542 - 30-015-39521
BURCH-KEELY UNIT #544 - 30-015-40322
BURCH-KEELY UNIT #545 - 30-015-40323
BURCH-KEELY UNIT #546 - 30-015-40324
BURCH-KEELY UNIT #577 - 30-015-39524

BURCH-KEELY UNIT #580 - 30-015-40270
BURCH-KEELY UNIT #581 - 30-015-40271
BURCH-KEELY UNIT #584 - 30-015-40273
BURCH-KEELY UNIT #588 - 30-015-40702
BURCH-KEELY UNIT #617 - 30-015-40704
BURCH-KEELY UNIT #625 - 30-015-40326
BURCH-KEELY UNIT #640 - 30-015-40328
BURCH-KEELY UNIT #652 - 30-015-40279
BURCH-KEELY UNIT #858 - 30-015-40382
BURCH-KEELY UNIT #906 - 30-015-40887
BURCH-KEELY UNIT #943H - 30-015-39575
BURCH-KEELY UNIT #945H - 30-015-39578
BURCH-KEELY UNIT #963H - 30-015-39576
BURCH-KEELY UNIT #944H - 30-015-44079
BURCH-KEELY UNIT #962H - 30-015-44101



Production Phase - Oil Tank #1

- Valve 1 open
- Valves 2 and 3 closed
- Valves 4, 5, and 6 open
- Valves 7, 8, and 9 closed
- Valves 10, 11, and 12 closed

Sales Phase - Oil Tank #1

- Valve 1 closed
- Valves 2 or 3 open
- Valve 4 closed
- Valves 5 and 6 open
- Valve 7 open
- Valves 8 and 9 closed
- Valves 10, 11, and 12 closed

Ledger for Site Diagram
Produced Fluid: _____
Produced Oil: _____
Produced Gas: _____
Produced Water: _____

Location of Site Security Plan:

COG Operating, LLC.
600 W. Illinois
Midland, TX 79701

SITE FACILITY DIAGRAM

DATE: August 10, 2017

BKU 13B TANK BATTERY

DRAWN BY: KHINSHAW

EDDY COUNTY, NEW MEXICO

