

Submit 1 Copy To Appropriate District Office  
District I - (575) 393-6161  
1625 N. French Dr., Hobbs, NM 88240  
District II - (575) 748-1283  
811 S. First St., Artesia, NM 88210  
District III - (505) 334-6178  
1000 Rio Brazos Rd., Aztec, NM 87410  
District IV - (505) 476-3460  
1220 S. St. Francis Dr., Santa Fe, NM 87505

State of New Mexico  
Energy, Minerals and Natural Resources

Form C-103  
Revised July 18, 2013

OIL CONSERVATION DIVISION  
1220 South St. Francis Dr.  
Santa Fe, NM 87505

WELL API NO.  
30-015-36187

5. Indicate Type of Lease  
STATE ☐ FEE ☒

6. State Oil & Gas Lease No.

7. Lease Name or Unit Agreement Name  
CYPRESS

8. Well Number 2

9. OGRID Number  
372098

10. Pool name or Wildcat  
FOREHAND RANCH; DELAWARE (24670)

SUNDRY NOTICES AND REPORTS ON WELLS  
(DO NOT USE THIS FORM FOR PROPOSALS TO DRILL OR TO DEEPEN OR PLUG BACK TO A DIFFERENT RESERVOIR. USE "APPLICATION FOR PERMIT" (FORM C-101) FOR SUCH PROPOSALS.)

1. Type of Well: Oil Well ☒ Gas Well ☐ Other ☐

2. Name of Operator  
Marathon Oil Permian LLC

3. Address of Operator  
5555 San Felipe St., Houston, TX 77056

4. Well Location  
Unit Letter G : 1800 feet from the North line and 1700 feet from the EAST line  
Section 8 Township 23S Range 27E NMPM County Eddy

11. Elevation (Show whether DR, RKB, RT, GR, etc.)  
3170' GR

12. Check Appropriate Box to Indicate Nature of Notice, Report or Other Data

NOTICE OF INTENTION TO:

PERFORM REMEDIAL WORK ☐ PLUG AND ABANDON ☐  
TEMPORARILY ABANDON ☒ CHANGE PLANS ☐  
PULL OR ALTER CASING ☐ MULTIPLE COMPL ☐  
DOWNHOLE COMMINGLE ☐  
CLOSED-LOOP SYSTEM ☐  
OTHER: ☐

SUBSEQUENT REPORT OF:

REMEDIAL WORK ☐ ALTERING CASING ☐  
COMMENCE DRILLING OPNS. ☐ P AND A ☐  
CASING/CEMENT JOB ☐  
OTHER: ☐

13. Describe proposed or completed operations. (Clearly state all pertinent details, and give pertinent dates, including estimated date of starting any proposed work). SEE RULE 19.15.7.14 NMAC. For Multiple Completions: Attach wellbore diagram of proposed completion or recompletion.

MARATHON OIL PERMIAN LLC, IS REQUESTING TO TA THE ABOVE MENTIONED WELL.

NM OIL CONSERVATION  
ARTESIA DISTRICT

MAR 06 2018

PROCEDURE FOR TA:

1. MIRU PU
2. POOH W/ rods and TAC
3. RIH w/ CIBP set +/- 4600' w/ 35' cmt on top. Approx. 50' above top perf. Dump bailor in WOC tag.
4. Unhook all flow lines from well head
5. Request NMOCD official for MIT

1-800-GO-AVERY

RECEIVED

TA status may be granted after a successful MIT test is performed.  
Contact the OCD to schedule the test so it may be witnessed.

- 1 YEAR MAXIMUM APPROVAL AFTER TEST.

Spud Date:

3/20/2008

Rig Release Date:

4/6/2008

LAST PROD 11/1/2008

I hereby certify that the information above is true and complete to the best of my knowledge and belief.

SIGNATURE Jennifer Van Curen TITLE Sr. Regulatory Compliance DATE 3/1/2018

Type or print name Jennifer Van Curen E-mail address: jvancuren@marathonoil.com PHONE: 713-296-2500

For State Use Only

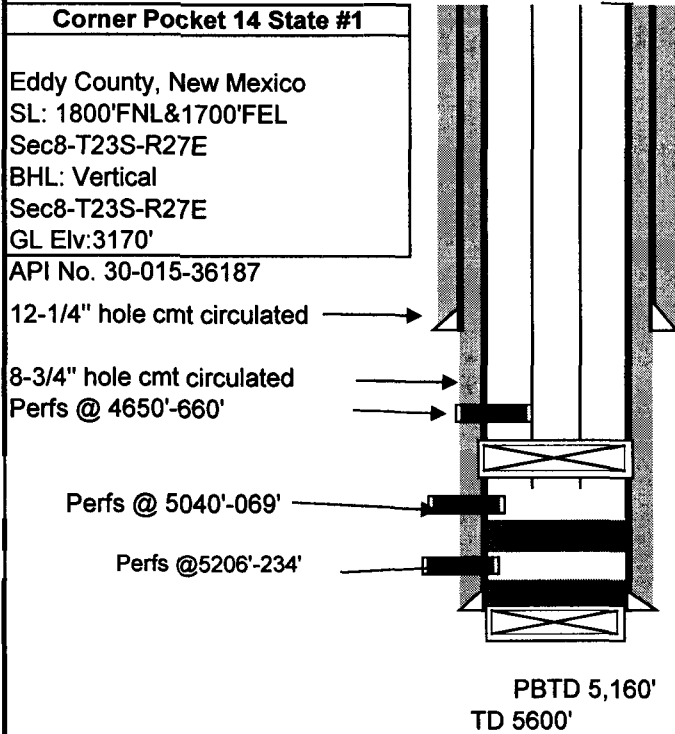
APPROVED BY: Deanna Inas TITLE COMPLIANCE OFFICER DATE 3/9/18

Conditions of Approval (if any):

# Cypress 2 - Actual WBD - 20171010

## Marathon Oil Corporation

Actual WELLBORE DIAGRAM



Casing					
Size	No Jts	Wt	Grade/Thrds	Depth Set (MD)	Depth Set (TVD)
9-5/8"	9	36	J-55	350'	
5-1/2"	126	17	J-55/L-80	5596'	

Production Assembly			
Description	Length	Depth Set	Depth Set
2-7/8" Tbg w/ TAC @ 5157'	5,157.00'	5,157.00'	
		5,157.00'	
		5,157.00'	
		5,157.00'	
		5,157.00'	
		5,157.00'	

Vertical Completion Description			
5206'-234' Acidized w/ 2500 gals 7.5% acid w/ 70 BS			
5040'-069' Acidized w/ 1500 gals 7.5% NEFE acid w/ 60 BS and Fraced w/ 46,553 gals medallion 3000 w/ 92,064# 16/30 sand.			
4650'-660' Acidized w/ 1500 gals 7.5% NEFE acid w/ 88BS and 500# 20/40 sand. Fraced w/ 32,932 gals medallion 3000 w/ 41,329# 16/30 sand			

# Cypress 2 - Proposed WBD - 20171010

## Marathon Oil Corporation

### Proposed WELLBORE DIAGRAM

Eddy County, New Mexico  
SL: 1800'FNL&1700'FEL  
Sec8-T23S-R27E  
BHL: Vertical  
Sec8-T23S-R27E  
GL Elv:3170'

API No. 30-015-36187

12-1/4" hole cmt circulated →  
Set CIBP @ 4600' w/ 35' cmt on top →

8-3/4" hole cmt circulated →  
Perfs @ 4650'-660' →

Perfs @ 5040'-069' →

Perfs @5206'-234' →

PBTD 5,160'  
TD 5600'

### Casing

Size	No Jts	Wt	Grade/Thrds	Depth Set (MD)	Depth Set (TVD)
9-5/8"	9	36	J-55	350'	
5-1/2"	126	17	J-55/L-80	5596'	

### Production Assembly

Description	Length	Depth Set	Depth Set
2-7/8" Tbg w/ TAC @ 5157'	5,157.00'	5,157.00'	
		5,157.00'	
		5,157.00'	
		5,157.00'	
		5,157.00'	
		5,157.00'	

### Vertical Completion Description

5206'-234' Acidized w/ 2500 gals 7.5% acid w/ 70 BS  
5040'-069' Acidized w/ 1500 gals 7.5% NEFE acid w/ 60 BS and Fraced  
w/ 46,553 gals medallion 3000 w/ 92,064# 16/30 sand.  
4650'-660' Acidized w/ 1500 gals 7.5% NEFE acid w/ 88BS and 500# 20/40 sand. Fraced  
w/ 32,932 gals medallion 3000 w/ 41,329# 16/30 sand