

DISTRICT I
1625 N. French Dr., Hobbs, NM 88240
Phone (575) 393-6161 Fax: (575) 393-0720

DISTRICT II
811 S. First St., Artesia, NM 88210
Phone (575) 746-1253 Fax: (575) 746-9720

DISTRICT III
1000 Rio Brazos Rd., Aztec, NM 87410
Phone (505) 334-6178 Fax: (505) 334-6170

DISTRICT IV
1226 S. St. Francis Dr., Santa Fe, NM 87505
Phone (505) 476-3480 Fax: (505) 476-3482

State of New Mexico
Energy, Minerals and Natural Resources Department

OIL CONSERVATION DIVISION

1226 South St. Francis Dr.
Santa Fe, New Mexico 87505

Form C-102

Revised August 1, 2011

NM OIL CONSERVATION
ARTESIA DISTRICT

APR 26 2018

RECEIVED AMENDED REPORT

WELL LOCATION AND ACREAGE DEDICATION PLAT

API Number 30.015-44917	Pool Code 64010	Pool Name WELCH; BONE SPRIN
Property Code 319571	Property Name COTTONWOOD 29-32 FED COM 2BS	Well Number 7H
OGRID No. 372137	Operator Name CHISHOLM ENERGY OPERATING, LLC	Elevation 3421'

Surface Location

UL or lot No.	Section	Township	Range	Lot Idn	FEET from the	North/SOUTH LINE	FEET from the	East/West Line	County
A	29	26 S	26 E		200	NORTH	1235	EAST	EDDY

Bottom Hole Location If Different From Surface

UL or lot No.	Section	Township	Range	Lot Idn	FEET from the	North/SOUTH LINE	FEET from the	East/West Line	County
LOT 1	32	26 S	26 E		330	SOUTH	400	EAST	EDDY

Dedicated Acres	Joint or Infill	Consolidation Code	Order No.
223.08			

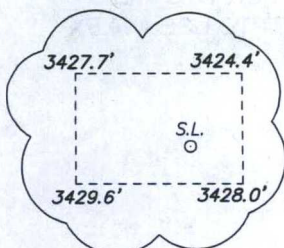
NO ALLOWABLE WILL BE ASSIGNED TO THIS COMPLETION UNTIL ALL INTERESTS HAVE BEEN CONSOLIDATED
OR A NON-STANDARD UNIT HAS BEEN APPROVED BY THE DIVISION

SURFACE LOCATION

Lat - N 32.01995311°
Long - W 104.31041007°
NMSPC- N 370998.6
E 548441.9
(NAD-83)

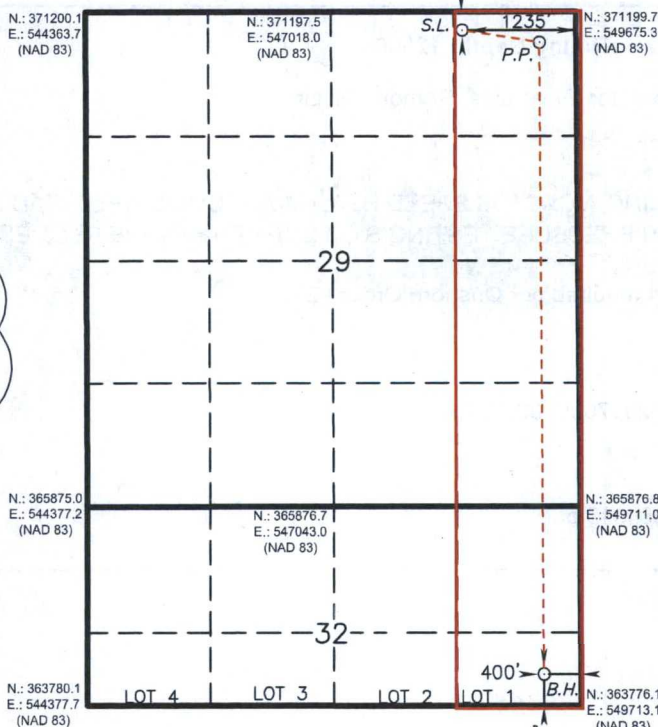
PENETRATION POINT 330' FNL & 400' FEL

Lat - N 32.01959742°
Long - W 104.30771367°
NMSPC- N 370869.4
E 549277.6
(NAD-83)



BOTTOM HOLE LOCATION

Lat - N 32.00100536°
Long - W 104.30760529°
NMSPC- N 364106.2
E 549312.8
(NAD-83)



OPERATOR CERTIFICATION

I hereby certify that the information contained herein is true and complete to the best of my knowledge and belief, and that this organization either owns a working interest or unleased mineral interest in the land including the proposed bottom hole location or has a right to drill this well at this location pursuant to a contract with an owner of such a mineral or working interest, or to a voluntary pooling agreement or a compulsory pooling order heretofore entered by the division.

Jennifer Elrod 3/21/18
Signature Date

JENNIFER ELROD

Printed Name

jelrod@chisholmenenergy.com

Email Address

SURVEYOR CERTIFICATION

I hereby certify that the well location shown on this plat was plotted from field notes of actual surveys made by me or under my supervision and that the same is true and correct to the best of my belief.

NOVEMBER 14 2017

Date Surveyed

Signature & Seal of
Professional Surveyor

Certificate No. Gary Jones 7977
BASIN SERVICES

0' 1000' 2000' 3000' 4000'
SCALE: 1" = 2000'
WO Num.: 33404

RWP 4-27-18



U.S. Department of the Interior
BUREAU OF LAND MANAGEMENT

Drilling Plan Data Report

04/23/2018

APD ID: 10400021491

Submission Date: 09/15/2017

Highlighted data
reflects the most
recent changes

Operator Name: CHISHOLM ENERGY OPERATING LLC

Well Name: COTTONWOOD 29-32 FED COM 2BS

Well Number: 7H

[Show Final Text](#)

Well Type: OIL WELL

Well Work Type: Drill

Section 1 - Geologic Formations

Formation ID	Formation Name	Elevation	True Vertical Depth	Measured Depth	Lithologies	Mineral Resources	Producing Formation
1	CASTILE	3384	0	0	SALT, ANHYDRITE	USEABLE WATER	No
2	DELAWARE	1604	1780	1780	SHALE, SANDSTONE, SILTSTONE	NATURAL GAS, OIL	No
3	BONE SPRING	-1896	5280	5280	LIMESTONE, SHALE	NATURAL GAS, OIL	No
4	BONE SPRING 1ST	-2761	6145	6145	SHALE, SANDSTONE, SILTSTONE	NATURAL GAS, OIL	No
5	BONE SPRING 2ND	-3296	6680	6680	SHALE, SANDSTONE, SILTSTONE	NATURAL GAS, OIL	Yes

Section 2 - Blowout Prevention

Pressure Rating (PSI): 5M

Rating Depth: 12500

Equipment: Rotating head, Mud Gas Separator, Flare Line, Remote Kill Line

Requesting Variance? YES

Variance request: WE PROPOSE UTILIZING A CACTUS SPEED HEAD MULTI-BOWL WELLHEAD FOR THIS WELL. PLEASE SEE ATTACHED DIAGRAM AND PRESSURE TESTING STATEMENT. ALSO WE REQUEST TO USE A FLEX CHOKE HOSE; PLEASE SEE ATTACHMENT.

Testing Procedure: BOP will be tested as required per Onshore Order #2.

Choke Diagram Attachment:

5M_Choke_Manifold_Diagram_20170906090734.PDF

BOP Diagram Attachment:

5m_BOP_Diagram_20170906084913.pdf