

- Power Generation – On lease
 - Only a portion of gas is consumed operating the generator, remainder of gas will be flared
- Compressed Natural Gas – On lease
 - Gas flared would be minimal, but might be uneconomical to operate when gas volume declines
- NGL Removal – On lease
 - Plants are expensive, residue gas is still flared, and uneconomical to operate when gas volume declines

US State Plane 1927 (Exact solution)
 NAD 1927 (NADCON CONUS)
 Clarke 1866
 New Mexico East 3001
 Mean Sea Level

RKB Elevation: Well @ 3242.00usft (GL: 3217' + KB: 25' (Prec594))

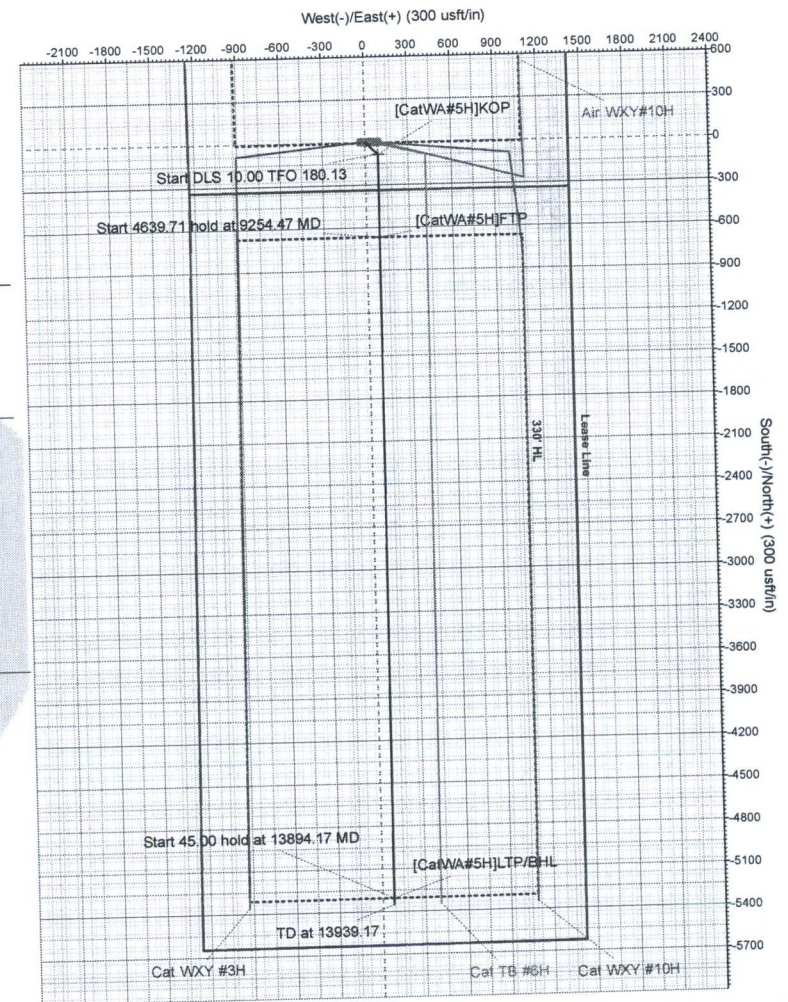
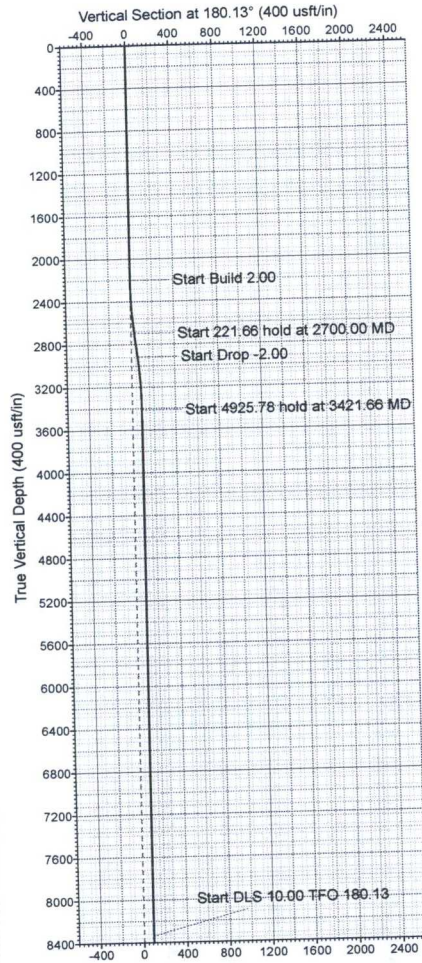
+N/-S	+E/-W	Northing	Easting	Latitude	Longitude	Slot
0.00	0.00	488120.20	528283.43	32.3419	-104.2418	

SECTION DETAILS

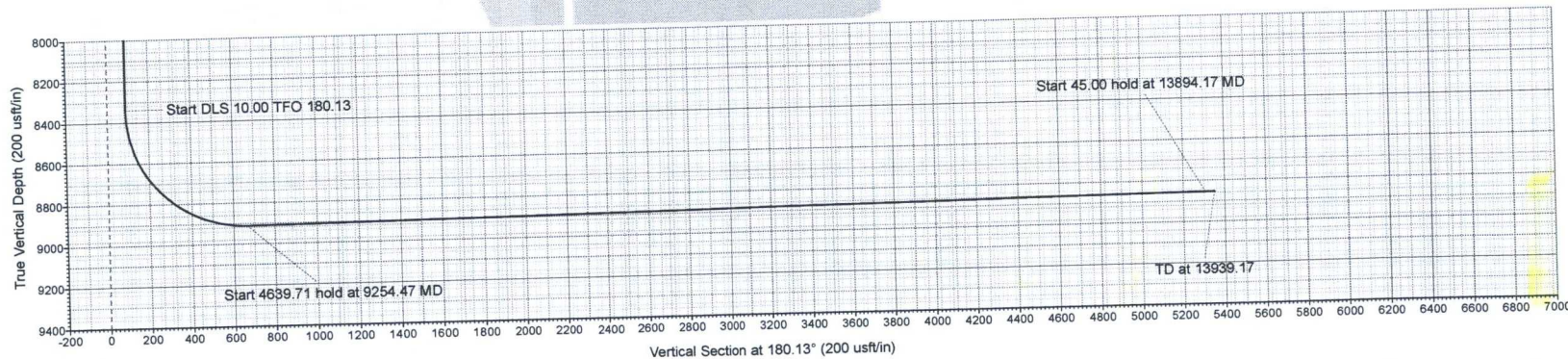
Sec	MD	Inc	Azi	TVD	+N/-S	+E/-W	Dleg	Vsect
1	0.00	0.00	0.00	0.00	0.00	0.00	0.00	0.00
2	2200.00	0.00	0.00	2200.00	0.00	0.00	0.00	0.00
3	2700.00	10.00	133.87	2697.47	-30.16	31.38	2.00	30.09
4	2921.66	10.00	133.87	2915.76	-56.84	59.12	2.00	56.70
5	3421.66	0.00	0.00	3413.22	-87.00	90.50	0.00	86.79
6	8347.44	0.00	0.00	8339.00	-87.00	90.50	0.00	86.79
7	9254.47	90.70	180.13	8911.91	-666.98	89.18	10.00	666.78
8	13894.17	90.70	180.13	8855.00	-5306.33	78.62	0.00	5306.14
9	13939.17	90.70	180.13	8854.45	-5351.33	78.52	0.00	5351.13

WELLBORE TARGET DETAILS (MAP CO-ORDINATES)

Name	TVD	+N/-S	+E/-W	Northing	Easting
[CatWA#5H]FTP	0.00	-667.00	88.84	487453.20	528372.27
[CatWA#5H]KOP	8339.00	-87.00	90.50	488033.20	528373.93
[CatWA#5H]LTP/BHL	8855.00	-5306.33	78.62	482813.87	528362.05



Target Line: 8920' TVD @ 0° VS: 90.7° INC



Azimuths to Grid North
 True North: -0.05°
 Magnetic North: 7.32°
 Magnetic Field
 Strength: 48010.3nT
 Dip Angle: 60.07°
 Date: 4/17/2018
 Model: HDGM

Azimuth Corrections
 Total Magnetic Corr. (M to G): 7.32°
 Declination (M to T): 7.37° East