

UNITED STATES  
DEPARTMENT OF THE INTERIOR  
BUREAU OF LAND MANAGEMENT

OCD Artesia

FORM APPROVED  
OMB NO. 1004-0137  
Expires: January 31, 2018**SUNDRY NOTICES AND REPORTS ON WELLS**  
*Do not use this form for proposals to drill or to re-enter an abandoned well. Use form 3160-3 (APD) for such proposals.*5. Lease Serial No.  
NMNM54290 ✓

6. If Indian, Allottee or Tribe Name

7. If Unit or CA/Agreement, Name and/or No.

**SUBMIT IN TRIPLICATE - Other instructions on page 2**

1. Type of Well

☒ Oil Well ☐ Gas Well ☐ Other

8. Well Name and No.

NORTH BRUSHY DRAW FEDERAL 35 4H ✓

2. Name of Operator

✓ RKI EXPLORATION &amp; PROD LLC

Contact: CRYSTAL FULTON

E-Mail: crystal.fulton@wpenergy.com

9. API Well No.

30-015-42290-00-S1 ✓

3a. Address

3500 ONE WILLIAMS CENTER MD 35  
TULSA, OK 74172

3b. Phone No. (include area code)

Ph: 539-573-0218

10. Field and Pool or Exploratory Area  
CORRAL CANYON  
WOLFCAMP

4. Location of Well (Footage, Sec., T., R., M., or Survey Description)

✓ Sec 35 T25S R29E SESW 175FSL 2365FWL  
32.079450 N Lat, 103.955980 W Lon

11. County or Parish, State

EDDY COUNTY, NM ✓

## 12. CHECK THE APPROPRIATE BOX(ES) TO INDICATE NATURE OF NOTICE, REPORT, OR OTHER DATA

TYPE OF SUBMISSION	TYPE OF ACTION			
<input type="checkbox"/> Notice of Intent	<input type="checkbox"/> Acidize	<input type="checkbox"/> Deepen	<input type="checkbox"/> Production (Start/Resume)	<input type="checkbox"/> Water Shut-Off
<input checked="" type="checkbox"/> Subsequent Report	<input type="checkbox"/> Alter Casing	<input type="checkbox"/> Hydraulic Fracturing	<input type="checkbox"/> Reclamation	<input type="checkbox"/> Well Integrity
<input type="checkbox"/> Final Abandonment Notice	<input type="checkbox"/> Casing Repair	<input type="checkbox"/> New Construction	<input type="checkbox"/> Recomplete	<input checked="" type="checkbox"/> Other Site Facility Diagram/Security Plan
	<input type="checkbox"/> Change Plans	<input type="checkbox"/> Plug and Abandon	<input type="checkbox"/> Temporarily Abandon	
	<input type="checkbox"/> Convert to Injection	<input type="checkbox"/> Plug Back	<input type="checkbox"/> Water Disposal	

13. Describe Proposed or Completed Operation: Clearly state all pertinent details, including estimated starting date of any proposed work and approximate duration thereof. If the proposal is to deepen directionally or recompleat horizontally, give subsurface locations and measured and true vertical depths of all pertinent markers and zones. Attach the Bond under which the work will be performed or provide the Bond No. on file with BLM/BIA. Required subsequent reports must be filed within 30 days following completion of the involved operations. If the operation results in a multiple completion or recompleat in a new interval, a Form 3160-4 must be filed once testing has been completed. Final Abandonment Notices must be filed only after all requirements, including reclamation, have been completed and the operator has determined that the site is ready for final inspection.

RKI EXPLORATION AND PRODUCTION, LLC IS SUBMITTING A SITE FACILITY DIAGRAM FOR THE MENTIONED WELL

OC 4-23-18  
Accepted for record - NMOCD

RECEIVED

APR 19 2018

DISTRICT II-ARTESIA O.C.D.



14. I hereby certify that the foregoing is true and correct.	
Electronic Submission #380800 verified by the BLM Well Information System For RKI EXPLORATION & PROD LLC, sent to the Carlsbad Committed to AFMSS for processing by PRISCILLA PEREZ on 07/16/2017 (17PP0655SE)	
Name (Printed/Typed) CRYSTAL FULTON	Title PERMITTING TECH II
Signature (Electronic Submission)	Date 07/10/2017

## THIS SPACE FOR FEDERAL OR STATE OFFICE USE

Approved By _____	Title _____	Date _____
Conditions of approval, if any, are attached. Approval of this notice does not warrant or certify that the applicant holds legal or equitable title to those rights in the subject lease which would entitle the applicant to conduct operations thereon.		Office _____

Title 18 U.S.C. Section 1001 and Title 43 U.S.C. Section 1212, make it a crime for any person knowingly and willfully to make to any department or agency of the United States any false, fictitious or fraudulent statements or representations as to any matter within its jurisdiction.

(Instructions on page 2)

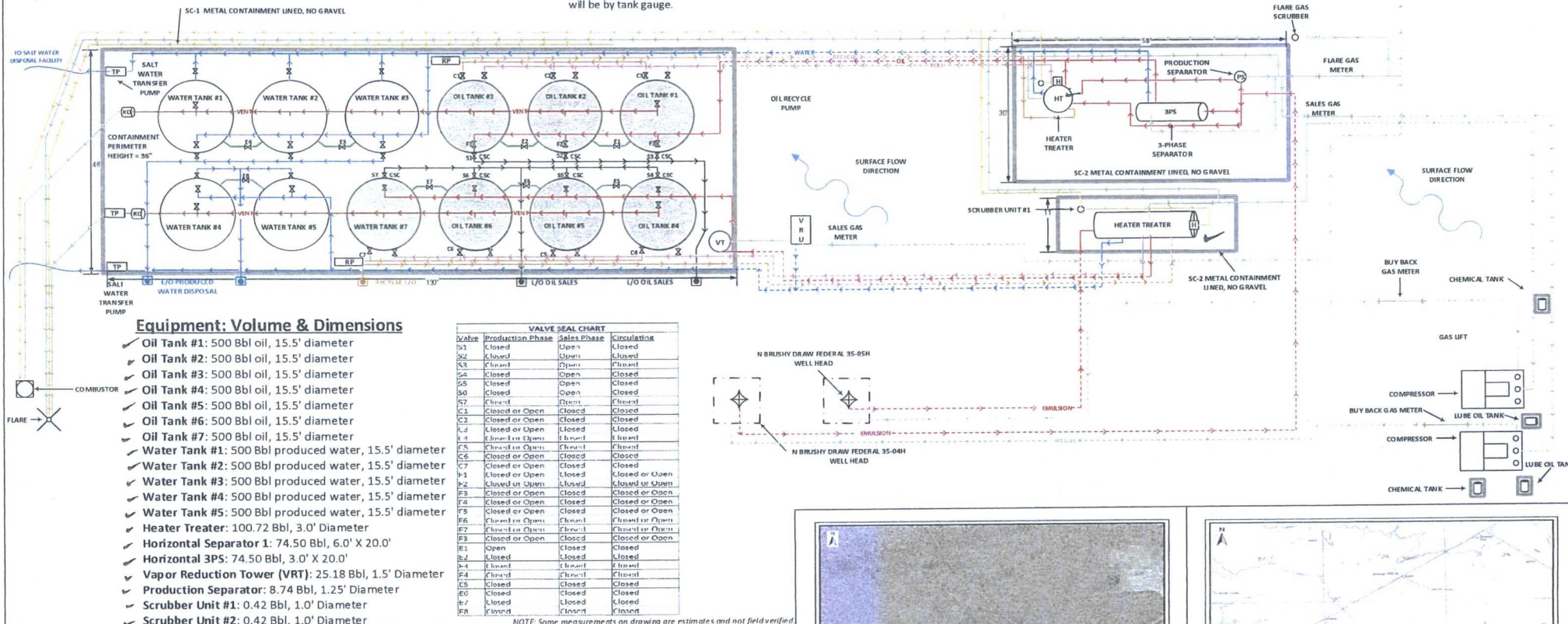
\*\* BLM REVISED \*\* BLM REVISED \*\* BLM REVISED \*\* BLM REVISED \*\* BLM REVISED \*\*





**Sales Phase:** The tank from which sales are being made will be isolated by sealing closed the fill valve, circulating valve, and the equalizer valve during sales and opening the sales valve. Upon completion of the sale the sales valve will be released. Sales by truck will be by tank gauge.

**Production Phase:** Sales vales S1 through S3 sealed closed. Fill valve to tank that is in production will be open. Equalizer valve to tank that is in production will be open. Circulating valves will be open as necessary, then released.



### Equipment: Volume & Dimensions

- ✓ Oil Tank #1: 500 Bbl oil, 15.5' diameter
- ✓ Oil Tank #2: 500 Bbl oil, 15.5' diameter
- ✓ Oil Tank #3: 500 Bbl oil, 15.5' diameter
- ✓ Oil Tank #4: 500 Bbl oil, 15.5' diameter
- ✓ Oil Tank #5: 500 Bbl oil, 15.5' diameter
- ✓ Oil Tank #6: 500 Bbl oil, 15.5' diameter
- ✓ Oil Tank #7: 500 Bbl oil, 15.5' diameter
- ✓ Water Tank #1: 500 Bbl produced water, 15.5' diameter
- ✓ Water Tank #2: 500 Bbl produced water, 15.5' diameter
- ✓ Water Tank #3: 500 Bbl produced water, 15.5' diameter
- ✓ Water Tank #4: 500 Bbl produced water, 15.5' diameter
- ✓ Water Tank #5: 500 Bbl produced water, 15.5' diameter
- ✓ Heater Treater: 100.72 Bbl, 3.0' Diameter
- ✓ Horizontal Separator 1: 74.50 Bbl, 6.0' X 20.0'
- ✓ Horizontal 3PS: 74.50 Bbl, 3.0' X 20.0'
- ✓ Vapor Reduction Tower (VRT): 25.18 Bbl, 1.5' Diameter
- ✓ Production Separator: 8.74 Bbl, 1.25' Diameter
- ✓ Scrubber Unit #1: 0.42 Bbl, 1.0' Diameter
- ✓ Scrubber Unit #2: 0.42 Bbl, 1.0' Diameter

Valve	Production Phase	Sales Phase	Circulating
S3	Closed	Open	Closed
S2	Closed	Open	Closed
S4	Closed	Open	Closed
S5	Closed	Open	Closed
S6	Closed	Open	Closed
S7	Closed	Open	Closed
C1	Closed or Open	Closed	Closed
C2	Closed or Open	Closed	Closed
C3	Closed or Open	Closed	Closed
C4	Closed or Open	Closed	Closed
C5	Closed or Open	Closed	Closed
C6	Closed or Open	Closed	Closed
C7	Closed or Open	Closed	Closed
I-1	Closed or Open	Closed	Closed or Open
I-2	Closed or Open	Closed	Closed or Open
I-3	Closed or Open	Closed	Closed or Open
I-4	Closed or Open	Closed	Closed or Open
I-5	Closed or Open	Closed	Closed or Open
I-6	Closed or Open	Closed	Closed or Open
I-7	Closed or Open	Closed	Closed or Open
I-8	Closed or Open	Closed	Closed or Open
E1	Open	Closed	Closed
E2	Closed	Closed	Closed
E3	Closed	Closed	Closed
E4	Closed	Closed	Closed
E5	Closed	Closed	Closed
E6	Closed	Closed	Closed
E7	Closed	Closed	Closed
E8	Closed	Closed	Closed

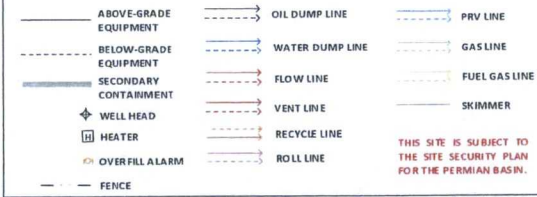
NOTE: Some measurements on drawing are estimates and not field verified

### FACILITY SITE DIAGRAM

RKI Exploration & Production, LLC – Permian Basin  
NORTH BRUSHY DRAW FEDERAL 35-4, 35-05H  
LEASE #NM-054290  
UNIT N, SEC.35, T26S, R29E  
API: 30-015-42290  
Eddy County, NM

DRAWN BY: Brian Styles  
DATE: 06.20.2017

### LEGEND



PLAN LOCATED AT: WPX ENERGY PRODUCTION, INC. 5315 Buena Vista Carlsbad NM, 88220

