

UNITED STATES
DEPARTMENT OF THE INTERIOR
BUREAU OF LAND MANAGEMENT

OCD Artesia

FORM APPROVED
OMB NO. 1004-0137
Expires: January 31, 2018**SUNDRY NOTICES AND REPORTS ON WELLS**
*Do not use this form for proposals to drill or to re-enter an abandoned well. Use form 3160-3 (APD) for such proposals.*5. Lease Serial No.
NMNM54290

6. If Indian, Allottee or Tribe Name

7. If Unit or CA/Agreement, Name and/or No.

8. Well Name and No.
NORTH BRUSHY DRAW FEDERAL 35 5H9. API Well No.
30-015-42291-00-X110. Field and Pool or Exploratory Area
CORRAL CANYON
UNKNOWN11. County or Parish, State
EDDY COUNTY, NM**SUBMIT IN TRIPLICATE - Other instructions on page 2**

1. Type of Well

☐ Oil Well ☒ Gas Well ☐ Other2. Name of Operator
RKI EXPLORATION & PROD LLCContact: CRYSTAL FULTON
E-Mail: crystal.fulton@wpenergy.com3a. Address
3500 ONE WILLIAMS CENTER MD 35
TULSA, OK 741723b. Phone No. (include area code)
Ph: 539-573-0218

4. Location of Well (Footage, Sec., T., R., M., or Survey Description)

Sec 35 T26S R29E SESW 175FSL 2390FWL
32.053455 N Lat, 103.562225 W Lon**12. CHECK THE APPROPRIATE BOX(ES) TO INDICATE NATURE OF NOTICE, REPORT, OR OTHER DATA**

TYPE OF SUBMISSION	TYPE OF ACTION			
<input type="checkbox"/> Notice of Intent	<input type="checkbox"/> Acidize	<input type="checkbox"/> Deepen	<input type="checkbox"/> Production (Start/Resume)	<input type="checkbox"/> Water Shut-Off
<input checked="" type="checkbox"/> Subsequent Report	<input type="checkbox"/> Alter Casing	<input type="checkbox"/> Hydraulic Fracturing	<input type="checkbox"/> Reclamation	<input type="checkbox"/> Well Integrity
<input type="checkbox"/> Final Abandonment Notice	<input type="checkbox"/> Casing Repair	<input type="checkbox"/> New Construction	<input type="checkbox"/> Recomplete	<input checked="" type="checkbox"/> Other
	<input type="checkbox"/> Change Plans	<input type="checkbox"/> Plug and Abandon	<input type="checkbox"/> Temporarily Abandon	Site Facility Diagram/Security Plan
	<input type="checkbox"/> Convert to Injection	<input type="checkbox"/> Plug Back	<input type="checkbox"/> Water Disposal	

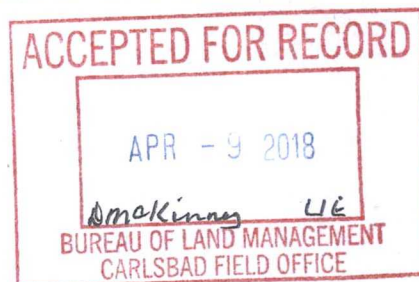
13. Describe Proposed or Completed Operation: Clearly state all pertinent details, including estimated starting date of any proposed work and approximate duration thereof. If the proposal is to deepen directionally or recompleat horizontally, give subsurface locations and measured and true vertical depths of all pertinent markers and zones. Attach the Bond under which the work will be performed or provide the Bond No. on file with BLM/BIA. Required subsequent reports must be filed within 30 days following completion of the involved operations. If the operation results in a multiple completion or recompleat in a new interval, a Form 3160-4 must be filed once testing has been completed. Final Abandonment Notices must be filed only after all requirements, including reclamation, have been completed and the operator has determined that the site is ready for final inspection.

RKI EXPLORATION AND PRODUCTION, LLC IS SUBMITTING A SITE FACILITY DIAGRAM FOR THE MENTIONED WELL

bc 4-23-18
Accepted for record - NMOCD

RECEIVED

APR 19 2018



DISTRICT II ARTESIA O.C.D.

14. I hereby certify that the foregoing is true and correct.
Electronic Submission #380919 verified by the BLM Well Information System
For RKI EXPLORATION & PROD LLC, sent to the Carlsbad
Committed to AFMSS for processing by PRISCILLA PEREZ on 07/16/2017 (17PP0657SE)

Name (Printed/Typed) CRYSTAL FULTON

Title PERMITTING TECH II

Signature (Electronic Submission)

Date 07/10/2017

THIS SPACE FOR FEDERAL OR STATE OFFICE USE

Approved By

Title

Date

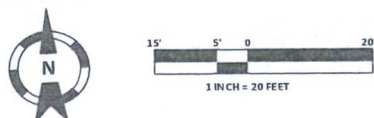
Conditions of approval, if any, are attached. Approval of this notice does not warrant or certify that the applicant holds legal or equitable title to those rights in the subject lease which would entitle the applicant to conduct operations thereon.

Office

Title 18 U.S.C. Section 1001 and Title 43 U.S.C. Section 1212, make it a crime for any person knowingly and willfully to make to any department or agency of the United States any false, fictitious or fraudulent statements or representations as to any matter within its jurisdiction.

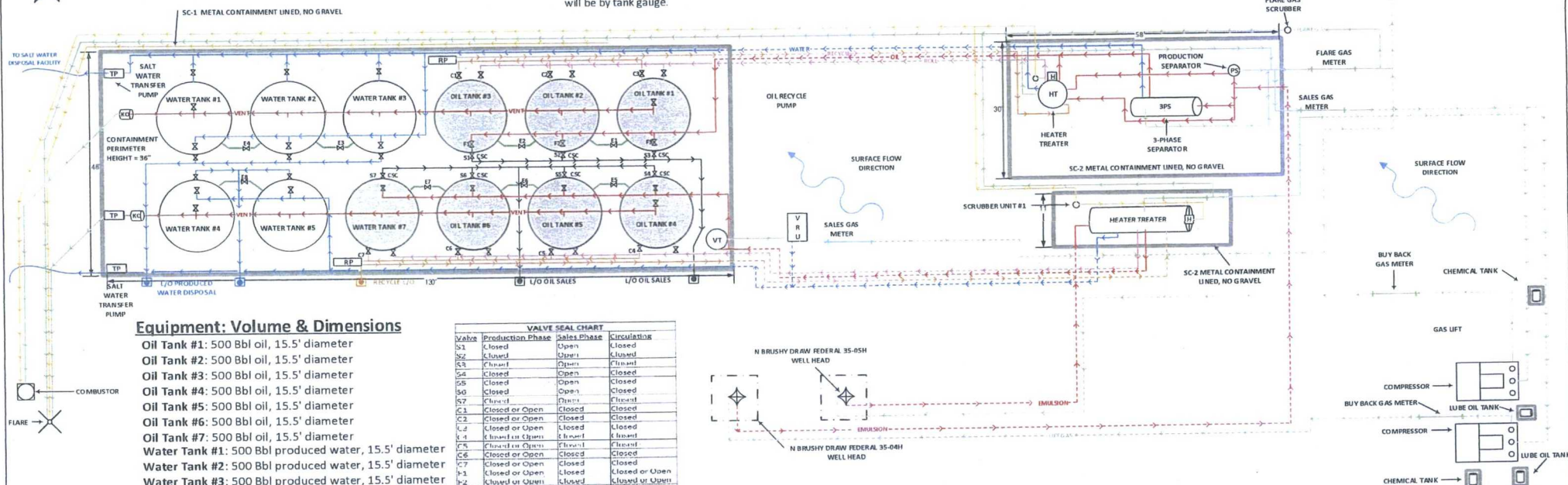
(Instructions on page 2)

**** BLM REVISED ** BLM REVISED ** BLM REVISED ** BLM REVISED ** BLM REVISED ****



Sales Phase: The tank from which sales are being made will be isolated by sealing closed the fill valve, circulating valve, and the equalizer valve during sales and opening the sales valve. Upon completion of the sale the sales valve will be released. Sales by truck will be by tank gauge.

Production Phase: Sales valves S1 through S3 sealed closed. Fill valve to tank that is in production will be open. Equalizer valve to tank that is in production will be open. Circulating valves will be open as necessary, then released.



Equipment: Volume & Dimensions

Oil Tank #1: 500 Bbl oil, 15.5' diameter
 Oil Tank #2: 500 Bbl oil, 15.5' diameter
 Oil Tank #3: 500 Bbl oil, 15.5' diameter
 Oil Tank #4: 500 Bbl oil, 15.5' diameter
 Oil Tank #5: 500 Bbl oil, 15.5' diameter
 Oil Tank #6: 500 Bbl oil, 15.5' diameter
 Oil Tank #7: 500 Bbl oil, 15.5' diameter
 Water Tank #1: 500 Bbl produced water, 15.5' diameter
 Water Tank #2: 500 Bbl produced water, 15.5' diameter
 Water Tank #3: 500 Bbl produced water, 15.5' diameter
 Water Tank #4: 500 Bbl produced water, 15.5' diameter
 Water Tank #5: 500 Bbl produced water, 15.5' diameter
 Heater Treater: 100.72 Bbl, 3.0' Diameter
 Horizontal Separator 1: 74.50 Bbl, 6.0' X 20.0'
 Horizontal 3PS: 74.50 Bbl, 3.0' X 20.0'
 Vapor Reduction Tower (VRT): 25.18 Bbl, 1.5' Diameter
 Production Separator: 8.74 Bbl, 1.25' Diameter
 Scrubber Unit #1: 0.42 Bbl, 1.0' Diameter
 Scrubber Unit #2: 0.42 Bbl, 1.0' Diameter

Valve	Production Phase	Sales Phase	Circulating
S1	Closed	Open	Closed
S2	Closed	Open	Closed
S3	Closed	Open	Closed
S4	Closed	Open	Closed
S5	Closed	Open	Closed
S6	Closed	Open	Closed
S7	Closed	Open	Closed
C1	Closed or Open	Closed	Closed
C2	Closed or Open	Closed	Closed
C3	Closed or Open	Closed	Closed
C4	Closed or Open	Closed	Closed
C5	Closed or Open	Closed	Closed
C6	Closed or Open	Closed	Closed
C7	Closed or Open	Closed	Closed
C8	Closed or Open	Closed	Closed
C9	Closed or Open	Closed	Closed
C10	Closed or Open	Closed	Closed
C11	Closed or Open	Closed	Closed
C12	Closed or Open	Closed	Closed
C13	Closed or Open	Closed	Closed
C14	Closed or Open	Closed	Closed
C15	Closed or Open	Closed	Closed
C16	Closed or Open	Closed	Closed
C17	Closed or Open	Closed	Closed
C18	Closed or Open	Closed	Closed
C19	Closed or Open	Closed	Closed
C20	Closed or Open	Closed	Closed
C21	Closed or Open	Closed	Closed
C22	Closed or Open	Closed	Closed
C23	Closed or Open	Closed	Closed
C24	Closed or Open	Closed	Closed
C25	Closed or Open	Closed	Closed
C26	Closed or Open	Closed	Closed
C27	Closed or Open	Closed	Closed
C28	Closed or Open	Closed	Closed
C29	Closed or Open	Closed	Closed
C30	Closed or Open	Closed	Closed
C31	Closed or Open	Closed	Closed
C32	Closed or Open	Closed	Closed
C33	Closed or Open	Closed	Closed
C34	Closed or Open	Closed	Closed
C35	Closed or Open	Closed	Closed
C36	Closed or Open	Closed	Closed
C37	Closed or Open	Closed	Closed
C38	Closed or Open	Closed	Closed
C39	Closed or Open	Closed	Closed
C40	Closed or Open	Closed	Closed
C41	Closed or Open	Closed	Closed
C42	Closed or Open	Closed	Closed
C43	Closed or Open	Closed	Closed
C44	Closed or Open	Closed	Closed
C45	Closed or Open	Closed	Closed
C46	Closed or Open	Closed	Closed
C47	Closed or Open	Closed	Closed
C48	Closed or Open	Closed	Closed
C49	Closed or Open	Closed	Closed
C50	Closed or Open	Closed	Closed
C51	Closed or Open	Closed	Closed
C52	Closed or Open	Closed	Closed
C53	Closed or Open	Closed	Closed
C54	Closed or Open	Closed	Closed
C55	Closed or Open	Closed	Closed
C56	Closed or Open	Closed	Closed
C57	Closed or Open	Closed	Closed
C58	Closed or Open	Closed	Closed
C59	Closed or Open	Closed	Closed
C60	Closed or Open	Closed	Closed
C61	Closed or Open	Closed	Closed
C62	Closed or Open	Closed	Closed
C63	Closed or Open	Closed	Closed
C64	Closed or Open	Closed	Closed
C65	Closed or Open	Closed	Closed
C66	Closed or Open	Closed	Closed
C67	Closed or Open	Closed	Closed
C68	Closed or Open	Closed	Closed
C69	Closed or Open	Closed	Closed
C70	Closed or Open	Closed	Closed
C71	Closed or Open	Closed	Closed
C72	Closed or Open	Closed	Closed
C73	Closed or Open	Closed	Closed
C74	Closed or Open	Closed	Closed
C75	Closed or Open	Closed	Closed
C76	Closed or Open	Closed	Closed
C77	Closed or Open	Closed	Closed
C78	Closed or Open	Closed	Closed
C79	Closed or Open	Closed	Closed
C80	Closed or Open	Closed	Closed
C81	Closed or Open	Closed	Closed
C82	Closed or Open	Closed	Closed
C83	Closed or Open	Closed	Closed
C84	Closed or Open	Closed	Closed
C85	Closed or Open	Closed	Closed
C86	Closed or Open	Closed	Closed
C87	Closed or Open	Closed	Closed
C88	Closed or Open	Closed	Closed
C89	Closed or Open	Closed	Closed
C90	Closed or Open	Closed	Closed
C91	Closed or Open	Closed	Closed
C92	Closed or Open	Closed	Closed
C93	Closed or Open	Closed	Closed
C94	Closed or Open	Closed	Closed
C95	Closed or Open	Closed	Closed
C96	Closed or Open	Closed	Closed
C97	Closed or Open	Closed	Closed
C98	Closed or Open	Closed	Closed
C99	Closed or Open	Closed	Closed
C100	Closed or Open	Closed	Closed

NOTE: Some measurements on drawing are estimates and not field verified

FACILITY SITE DIAGRAM

RKI Exploration & Production, LLC – Permian Basin
 NORTH BRUSHY DRAW FEDERAL 35-4, 35-05H
 LEASE #NM-054290
 UNIT N, SEC.35, T26S, R29E
 API: 30-015-42290
 Eddy County, NM

DRAWN BY: Brian Skyles
 DATE: 06.20.2017

LEGEND

— ABOVE-GRADE EQUIPMENT	— OIL DUMP LINE	— PRV LINE
— BELOW-GRADE EQUIPMENT	— WATER DUMP LINE	— GAS LINE
— SECONDARY CONTAINMENT	— FLOW LINE	— FUEL GAS LINE
◆ WELL HEAD	— VENT LINE	— SKIMMER
HEATER	— RECYCLE LINE	
OVER FILL ALARM	— ROLL LINE	
— FENCE		

PLAN LOCATED AT: WPX ENERGY PRODUCTION, INC. 5315 Buena Vista Carlsbad NM, 88220

