

District I
1625 N. French Dr., Hobbs, NM 88240
Phone: (575) 393-6161 Fax: (575) 393-8720
District II
811 S. First St., Artesia, NM 88210
Phone: (575) 748-1283 Fax: (575) 748-9720
District III
1000 Rio Branson Road, Anton, NM 87410
Phone: (505) 334-6178 Fax: (505) 334-6170
District IV
1220 S. St. Francis Dr., Santa Fe, NM 87505
Phone: (505) 476-3480 Fax: (505) 476-3462

State of New Mexico
Energy, Minerals & Natural Resources Department
OIL CONSERVATION DIVISION
1220 South St. Francis Dr.
Santa Fe, NM 87505

NM OIL CONSERVATION
ARTESIA DISTRICT

Form C-102
Revised August 1, 2011
Submit one copy to appropriate
District Office

RECEIVED ☒ AMENDED REPORT
(As-Drilled)

WELL LOCATION AND ACREAGE DEDICATION PLAT

API Number 30-015-44508	Pool Code 96473	Pool Name Pierce Crossing Bone Spring, East
Property Code 319797	Property Name CORRAL FLY "02-01" STATE	Well Number 22H
OGRID No. 16696	Operator Name OXY USA INC.	Elevation 2995.7'

Surface Location

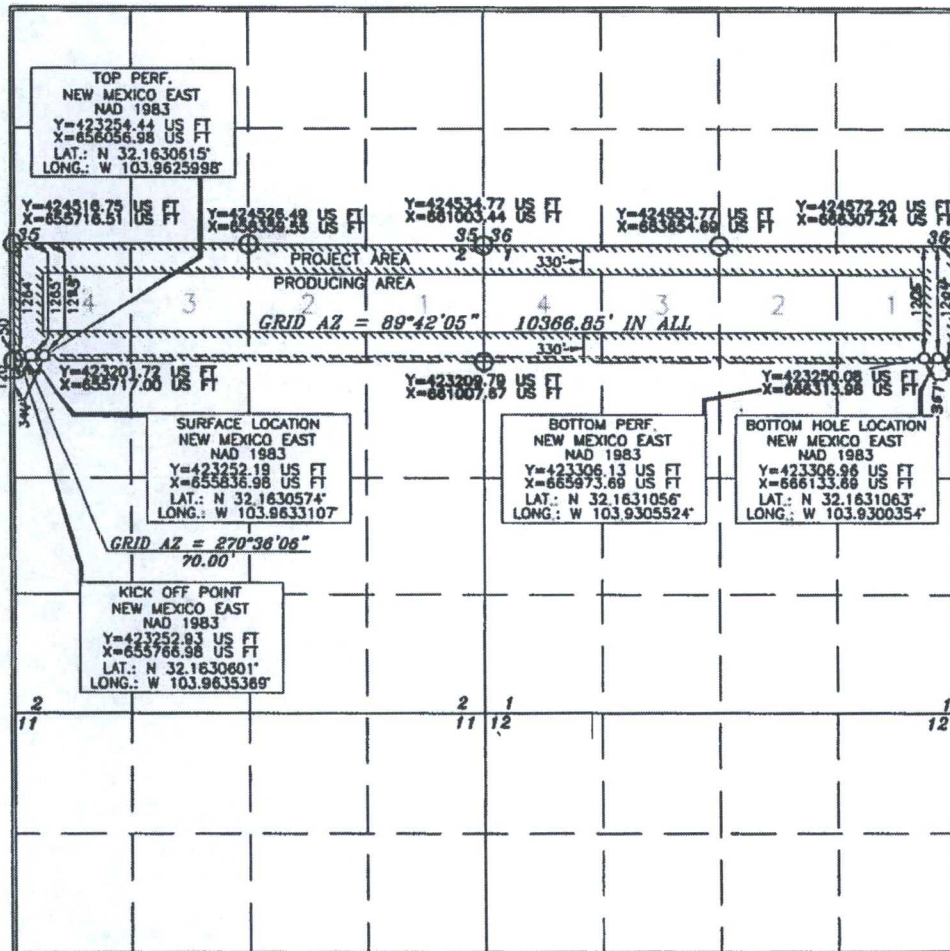
UL or lot no.	Section	Township	Range	Lot Idn	Feet from the	North/South line	Feet from the	East/West line	County
4	2	25 SOUTH	29 EAST, N.M.P.M.		1265'	NORTH	120'	WEST	EDDY

Bottom Hole Location If Different From Surface

UL or lot no.	Section	Township	Range	Lot Idn	Feet from the	North/South line	Feet from the	East/West line	County
1	1	25 SOUTH	29 EAST, N.M.P.M.		1265' 1264'	NORTH	120' 212'	EAST	EDDY

Dedicated Acres 318.88	Joint or Infill Y	Consolidation Code	Order No. NSL-7613	BP- 1205 FNL 351 FEL TP- 1225 FNL 344 FWL
----------------------------------	-----------------------------	--------------------	------------------------------	--

No allowable will be assigned to this completion until all interests have been consolidated or a non-standard unit has been approved by the division.



OPERATOR CERTIFICATION

I hereby certify that the information contained herein is true and complete to the best of my knowledge and belief, and that this organization either owns a working interest or unleased mineral interest in the land including the proposed bottom hole location or has a right to drill this well at this location pursuant to a contract with an owner of such a mineral or working interest, or to a voluntary pooling agreement or a compulsory pooling order heretofore entered by the division.

Signature: *[Signature]* Date: **5/14/18**
Printed Name: **Jana Mendiola**
Email Address: **jana.mendiola@oxy.com**

SURVEYOR CERTIFICATION

I hereby certify that the well location shown on this plat was plotted from field notes of actual surveys made by me or under my supervision, and that the same is true and correct to the best of my belief.

Signature: *[Signature]* Date of Survey: **JULY 25, 2017**
Professional Surveyor: **15079**

Signature: *[Signature]* Date: **9/20/2017**
Certificate Number: **15079**