

**NM OIL CONSERVATION
ARTESIA DISTRICT**

DISTRICT I
1625 N. FRENCH DR., HOBBS, NM 88240
Phone: (505) 393-6101 Fax: (505) 393-6720

DISTRICT II
811 S. FIRST ST., ARTESIA, NM 88210
Phone: (505) 746-1553 Fax: (505) 746-6720

DISTRICT III
1000 RIO BRAZOS RD., AZTEC, NM 87410
Phone: (505) 334-6178 Fax: (505) 334-6170

DISTRICT IV
1220 S. ST. FRANCIS DR., SANTA FE, NM 87505
Phone: (505) 476-3460 Fax: (505) 476-3462

State of New Mexico
Energy, Minerals & Natural Resources Department
OIL CONSERVATION DIVISION
1220 SOUTH ST. FRANCIS DR.
Santa Fe, New Mexico 87505

MAY 25 2018

Form C-102

Revised August 1, 2011

RECEIVED

Copy to appropriate
District Office

☐ AMENDED REPORT

WELL LOCATION AND ACREAGE DEDICATION PLAT

API Number 30-015-44904		Pool Code 98199	Pool Name PARKWAY; BONE SPRING, WEST
Property Code 38434	Property Name TURQUOISE PWU 27		Well Number 61H
OGRID No. 6137	Operator Name DEVON ENERGY PRODUCTION COMPANY, L.P.		Elevation 3343.7'

Surface Location

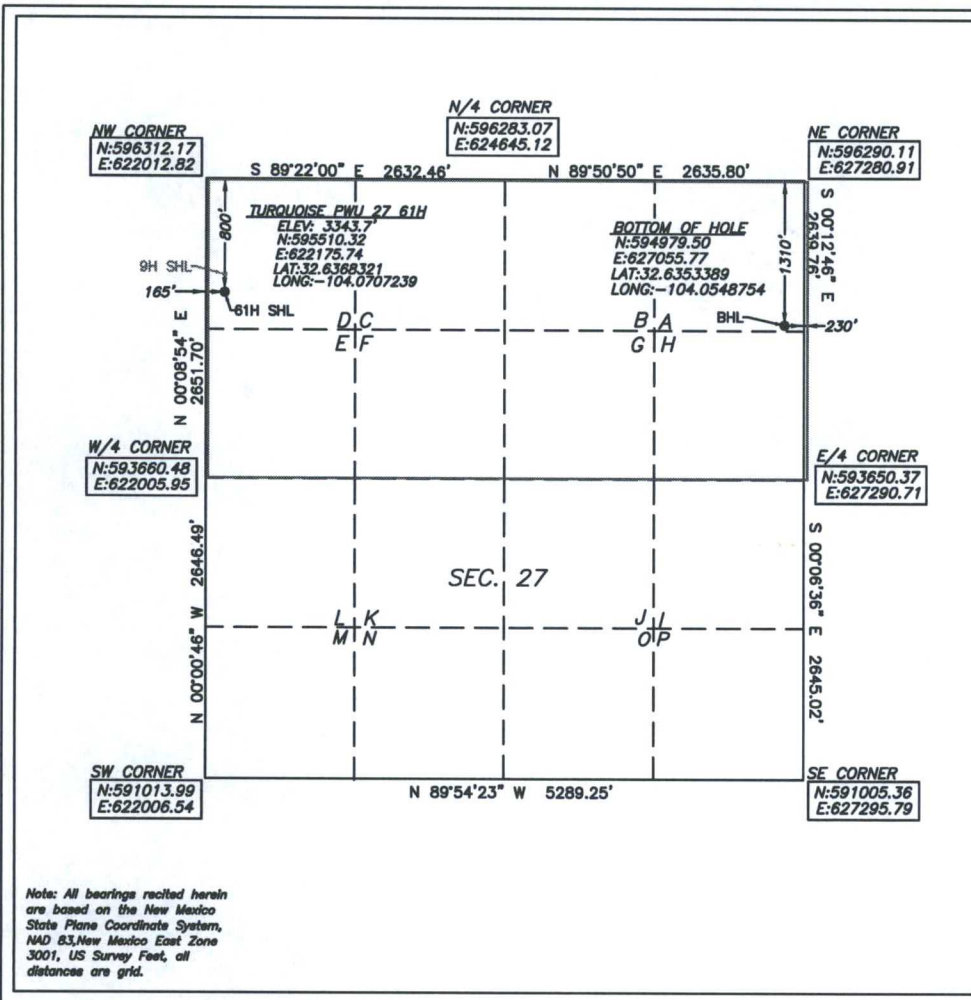
UL or lot No.	Section	Township	Range	Lot Idn	Feet from the	North/South line	Feet from the	East/West line	County
D	27	19-S	29-E		800	NORTH	165	WEST	EDDY

Bottom Hole Location If Different From Surface

UL or lot No.	Section	Township	Range	Lot Idn	Feet from the	North/South line	Feet from the	East/West line	County
A	27	19-S	29-E		1310	NORTH	230	EAST	EDDY

Dedicated Acres	Joint or Infill	Consolidation Code	Order No.
320			R-14188

**NO ALLOWABLE WILL BE ASSIGNED TO THIS COMPLETION UNTIL ALL INTERESTS HAVE BEEN CONSOLIDATED
OR A NON-STANDARD UNIT HAS BEEN APPROVED BY THE DIVISION**



OPERATOR CERTIFICATION

I hereby certify that the information herein is true and complete to the best of my knowledge and belief, and that this organization either owns a working interest or unleased mineral interest in the land including the proposed bottom hole location or has a right to drill this well at this location pursuant to a contract with an owner of such mineral or working interest, or to a voluntary pooling agreement or a compulsory pooling order heretofore entered by the division.

Erin Workman 05/22/2018

Signature Date

Erin Workman

Printed Name

Erin.workman@dm.com

E-mail Address

SURVEYOR CERTIFICATION

I hereby certify that the well location shown on this plat was plotted from field notes of actual surveys made by me or under my supervision, and that the same is true and correct to the best of my belief.

04/2018

Date of Survey

Signature & Seal of Professional Surveyor

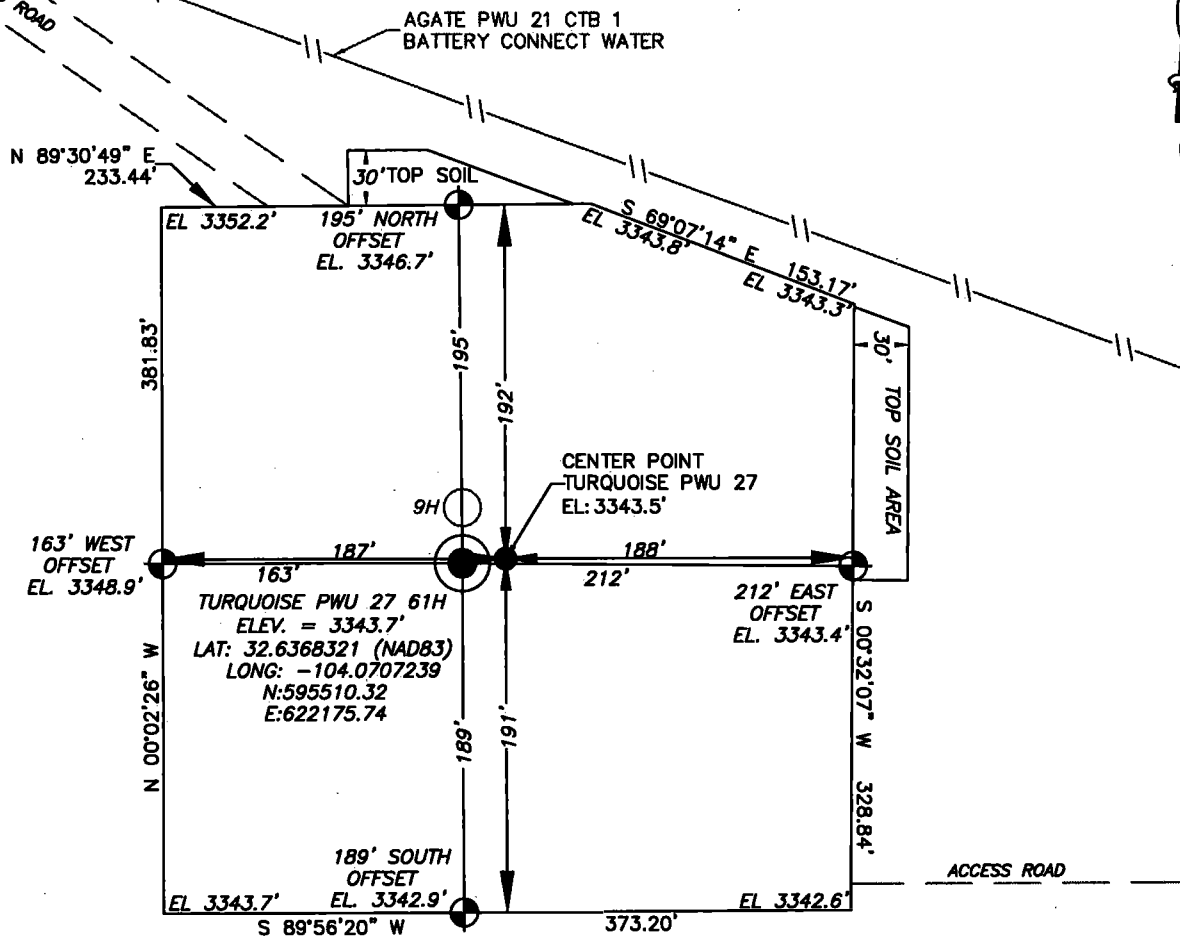
B. L. LAMAN
NEW MEXICO
22404
PROFESSIONAL SURVEYOR

05/09/18

Certificate No. 22404 B.L. LAMAN
W.O. # DRAWN BY: CM

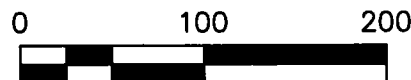
First Take Point @ 8929' MD, 1357' FNL, 165' FWL, Last Take Point @ 13783' MD, 1310' FNL, 330' FE

SECTION 27, TOWNSHIP 19 SOUTH, RANGE 29 EAST, N.M.P.M.
EDDY COUNTY, STATE OF NEW MEXICO
SITE MAP



Note: All bearings recited herein are based on the New Mexico State Plane Coordinate System, NAD 83, New Mexico East Zone 3001, US Survey Feet, all distances are grid.

DEVON ENERGY PRODUCTION COMPANY, L.P.
TURQUOISE PWU 27 61H
LOCATED 800 FT. FROM THE NORTH LINE
AND 165 FT. FROM THE WEST LINE OF
SECTION 27, TOWNSHIP 19 SOUTH,
RANGE 29 EAST, N.M.P.M.
EDDY COUNTY, STATE OF NEW MEXICO



DIRECTIONS TO LOCATION

FROM THE INTERSECTION OF NM-62 (HOBBS HWY) AND CO. RD. 238 (BURTON FLATS RD), HEAD NORTH ON CO. RD. 238 FOR 7.79 MILES TO THE ENTRANCE OF AN EXISTING WELLPAD. CONTINUE WEST THROUGH THE EXISTING WELLPAD FOR 182' TO THE SOUTHEAST CORNER OF THE PROPOSED TURQUOISE PWU 27.

HORIZON ROW LLC

DEVON ENERGY PRODUCTION CO., L.P.

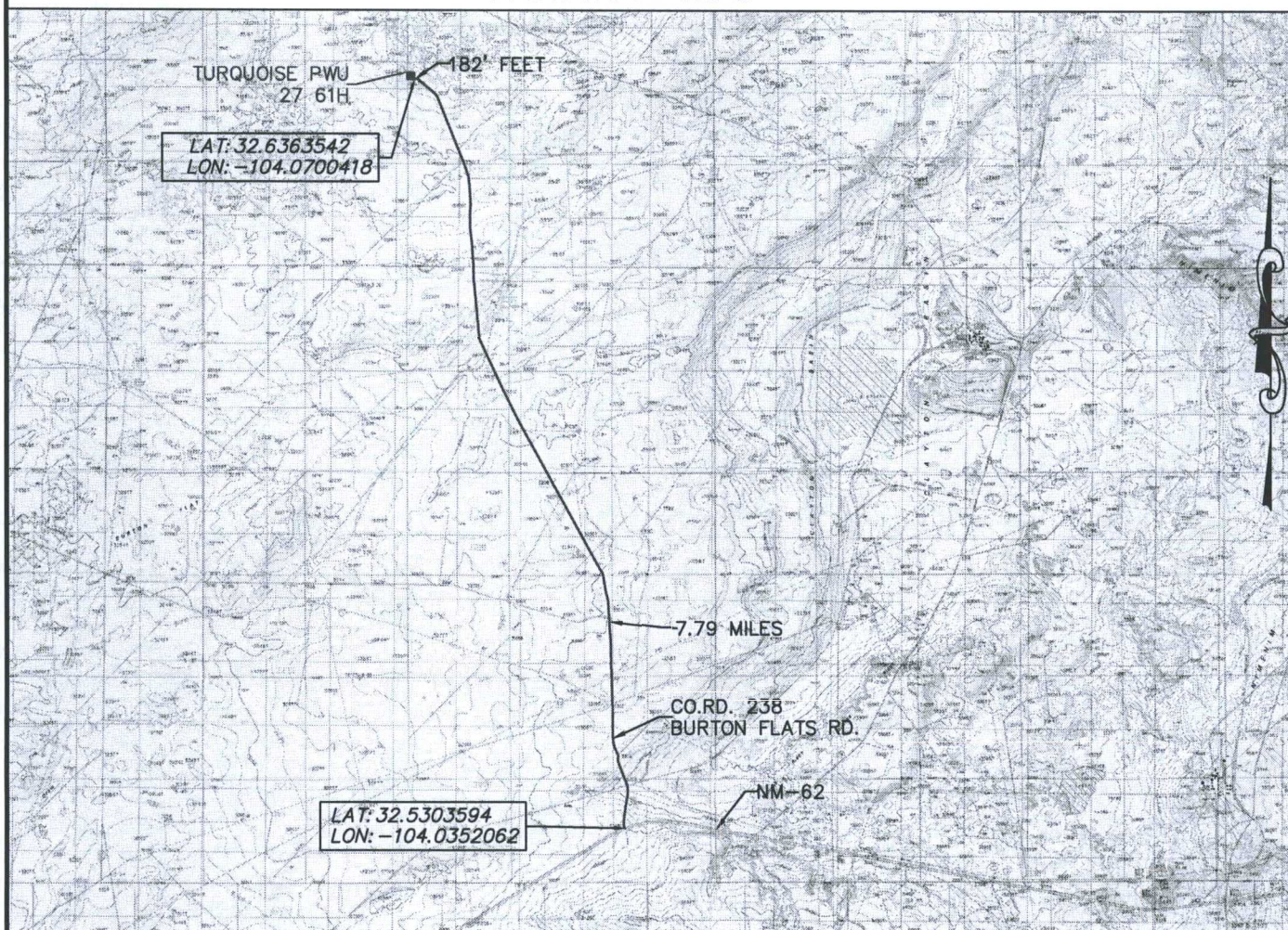
Drawn by:
CHRIS MAAS

Date: 05/04/2018

Drawn for:

devon

SECTION 27, TOWNSHIP 19 SOUTH, RANGE 29 EAST, N.M.P.M.
EDDY COUNTY, STATE OF NEW MEXICO
VICINITY MAP



DEVON ENERGY PRODUCTION COMPANY, L.P.
TURQUOISE PWU 27 61H
LOCATED 800 FT. FROM THE NORTH LINE
AND 165 FT. FROM THE WEST LINE OF
SECTION 27, TOWNSHIP 29 SOUTH,
RANGE 29 EAST, N.M.P.M.
EDDY COUNTY, STATE OF NEW MEXICO

NOT TO SCALE

DIRECTIONS TO LOCATION

FROM THE INTERSECTION OF NM-62 (HOBBS HWY) AND CO. RD. 238 (BURTON FLATS RD), HEAD NORTH ON CO. RD. 238 FOR 7.79 MILES TO THE ENTRANCE OF AN EXISTING WELLPAD. CONTINUE WEST THROUGH THE EXISTING WELLPAD FOR 182' TO THE SOUTHEAST CORNER OF THE PROPOSED TURQUOISE PWU 27.

HORIZON ROW LLC

DEVON ENERGY PRODUCTION CO., L.P.

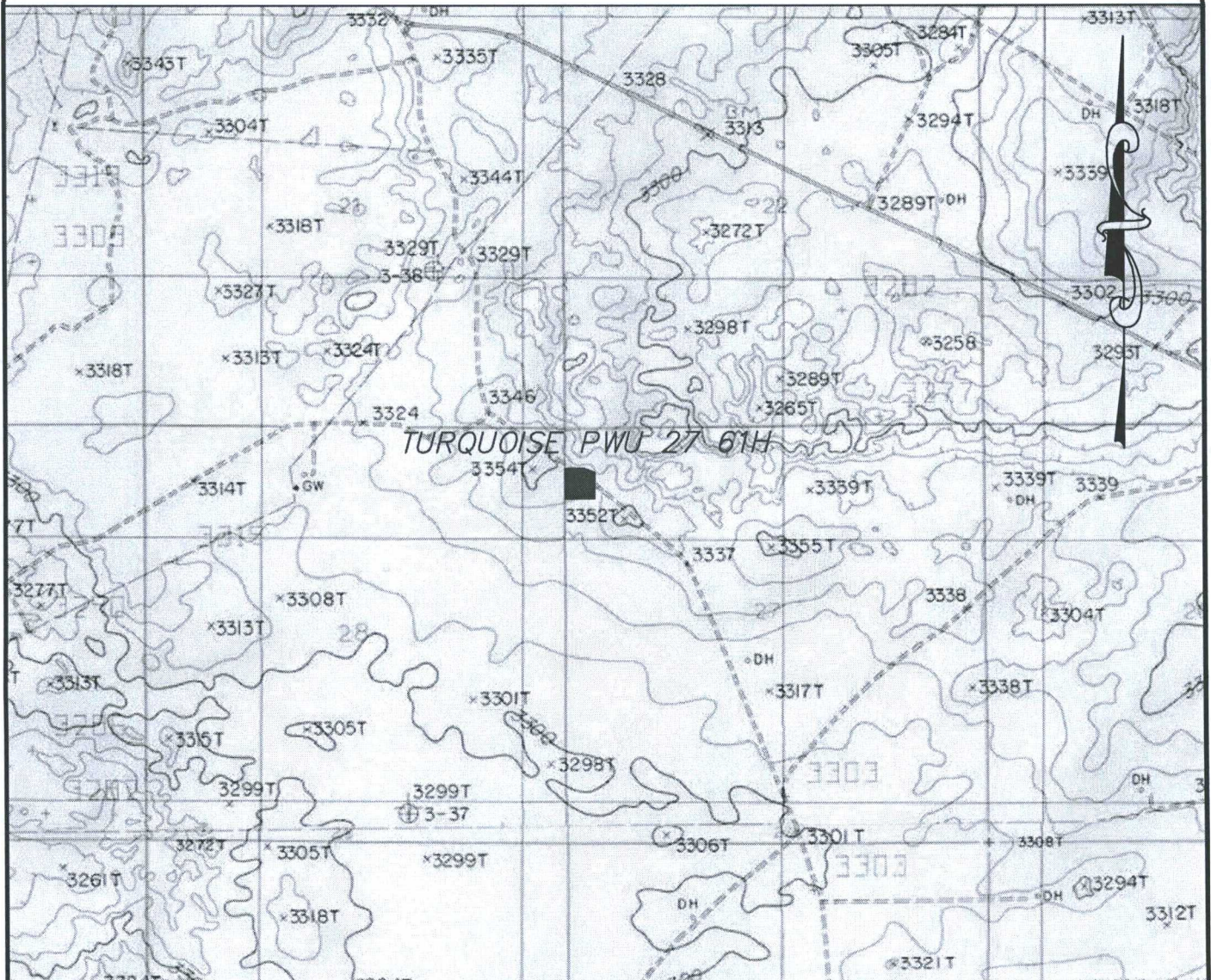
Drawn by:
CHRIS MAAS

Date: 05/04/2018

Drawn for:

devon

SECTION 27, TOWNSHIP 19 SOUTH, RANGE 29 EAST, N.M.P.M.
 EDDY COUNTY, STATE OF NEW MEXICO
 LOCATION VERIFICATION MAP



USGS QUAD MAP

DEVON ENERGY PRODUCTION COMPANY, L.P.
 TURQUOISE PWU 27 61H
 LOCATED 800 FT. FROM THE NORTH LINE
 AND 165 FT. FROM THE WEST LINE OF
 SECTION 27, TOWNSHIP 29 SOUTH,
 RANGE 29 EAST, N.M.P.M.
 EDDY COUNTY, STATE OF NEW MEXICO

0 2000 4000



HORIZON ROW LLC

Drawn for:

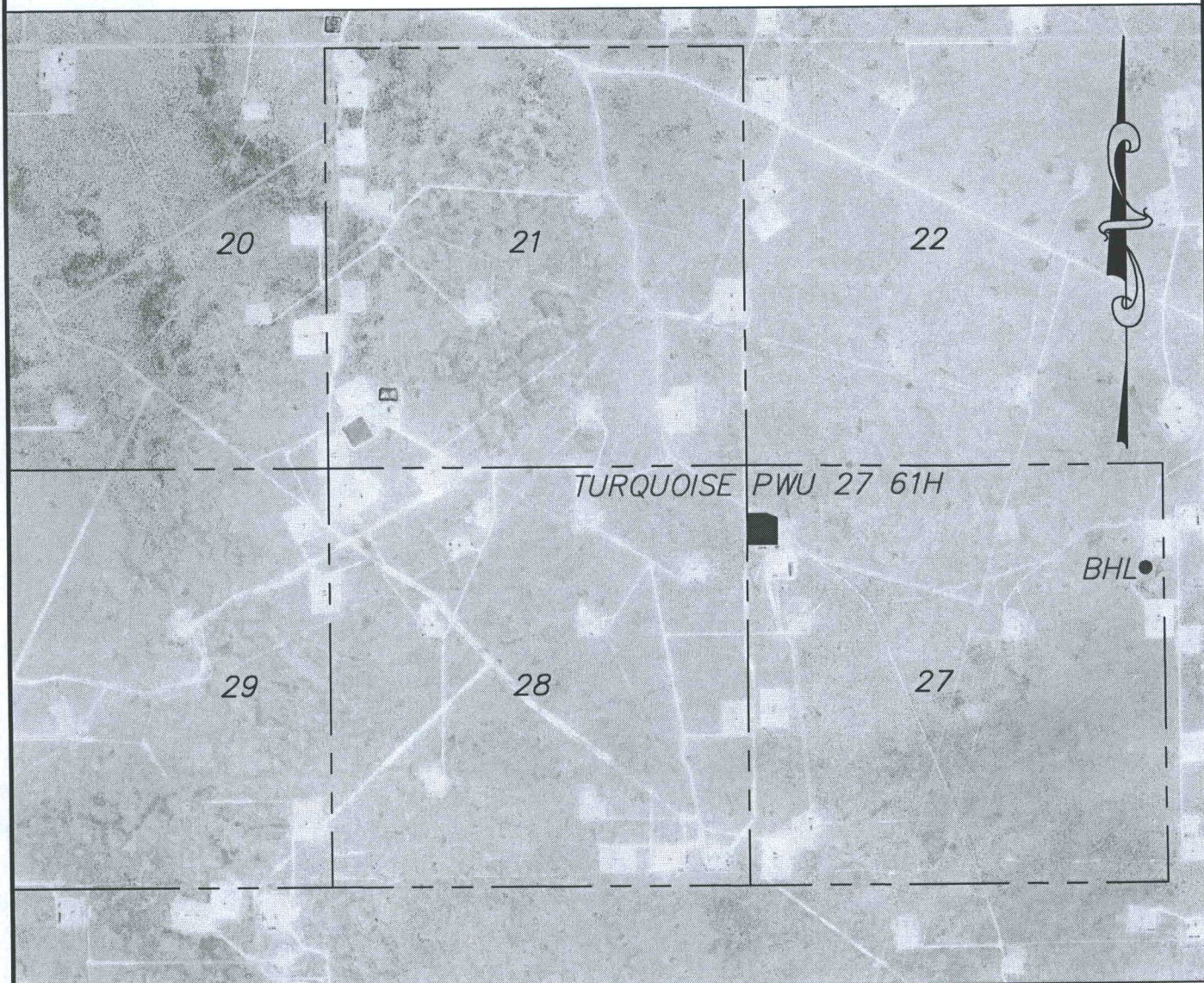
DEVON ENERGY PRODUCTION CO., L.P.

Drawn by:
CHRIS MAAS

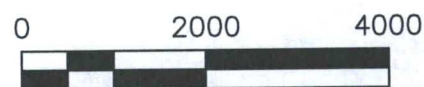
Date: 05/04/2018

devon

SECTION 27, TOWNSHIP 19 SOUTH, RANGE 29 EAST, N.M.P.M.
EDDY COUNTY, STATE OF NEW MEXICO
AERIAL PHOTO



DEVON ENERGY PRODUCTION COMPANY, L.P.
TURQUOISE PWU 27 61H
LOCATED 800 FT. FROM THE NORTH LINE
AND 165 FT. FROM THE WEST LINE OF
SECTION 27, TOWNSHIP 29 SOUTH,
RANGE 29 EAST, N.M.P.M.
EDDY COUNTY, STATE OF NEW MEXICO



HORIZON ROW LLC

Drawn for:

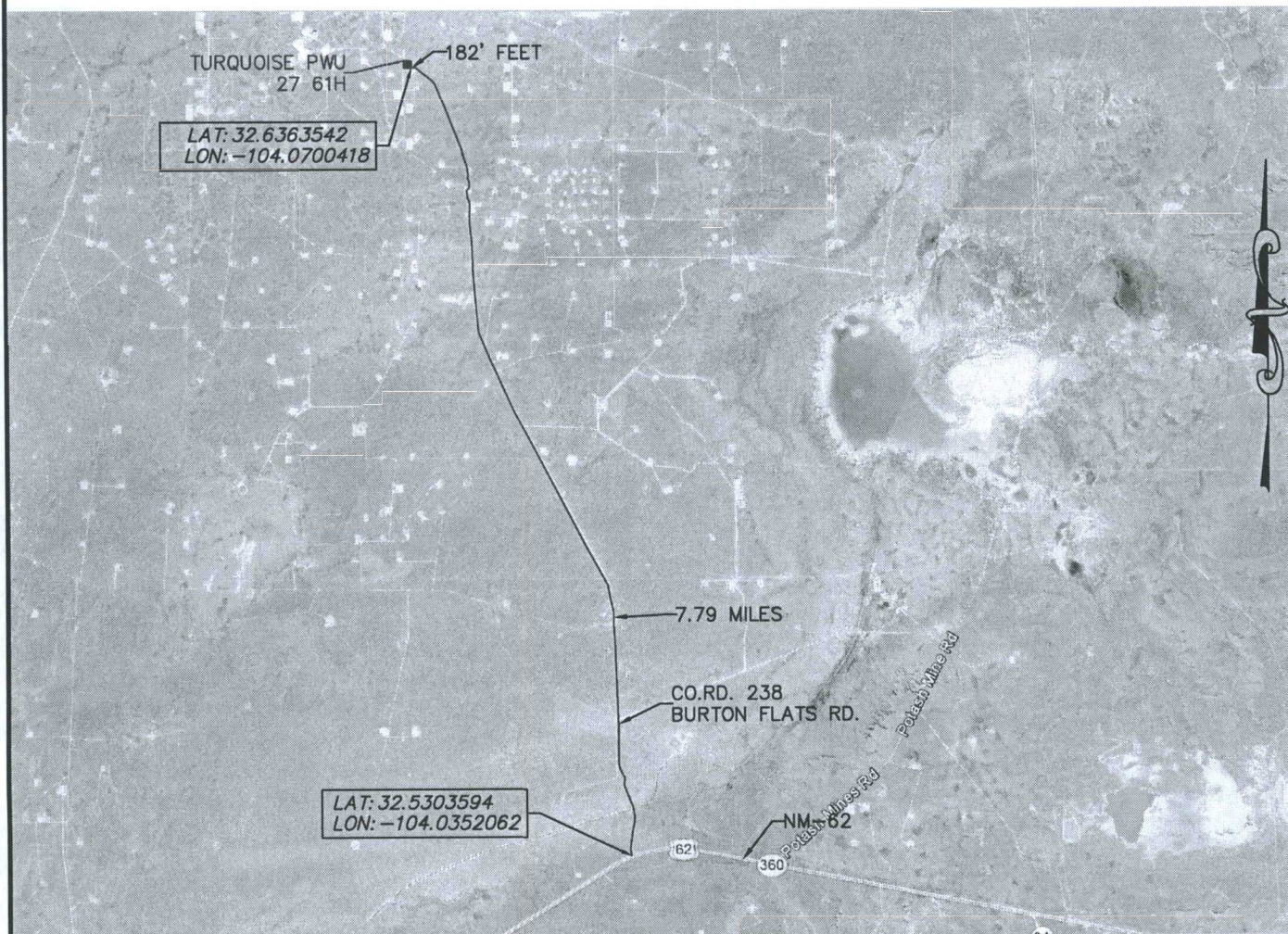
DEVON ENERGY PRODUCTION CO., L.P.

Drawn by:
CHRIS MAAS

Date: 05/04/2018

devon

SECTION 27, TOWNSHIP 19 SOUTH, RANGE 29 EAST, N.M.P.M.
 EDDY COUNTY, STATE OF NEW MEXICO
 AERIAL ACCESS ROUTE MAP



DEVON ENERGY PRODUCTION COMPANY, L.P.
 TURQUOISE PWU 27 61H
 LOCATED 800 FT. FROM THE NORTH LINE
 AND 165 FT. FROM THE WEST LINE OF
 SECTION 27, TOWNSHIP 29 SOUTH,
 RANGE 29 EAST, N.M.P.M.
 EDDY COUNTY, STATE OF NEW MEXICO

NOT TO SCALE

HORIZON ROW LLC

Drawn for:

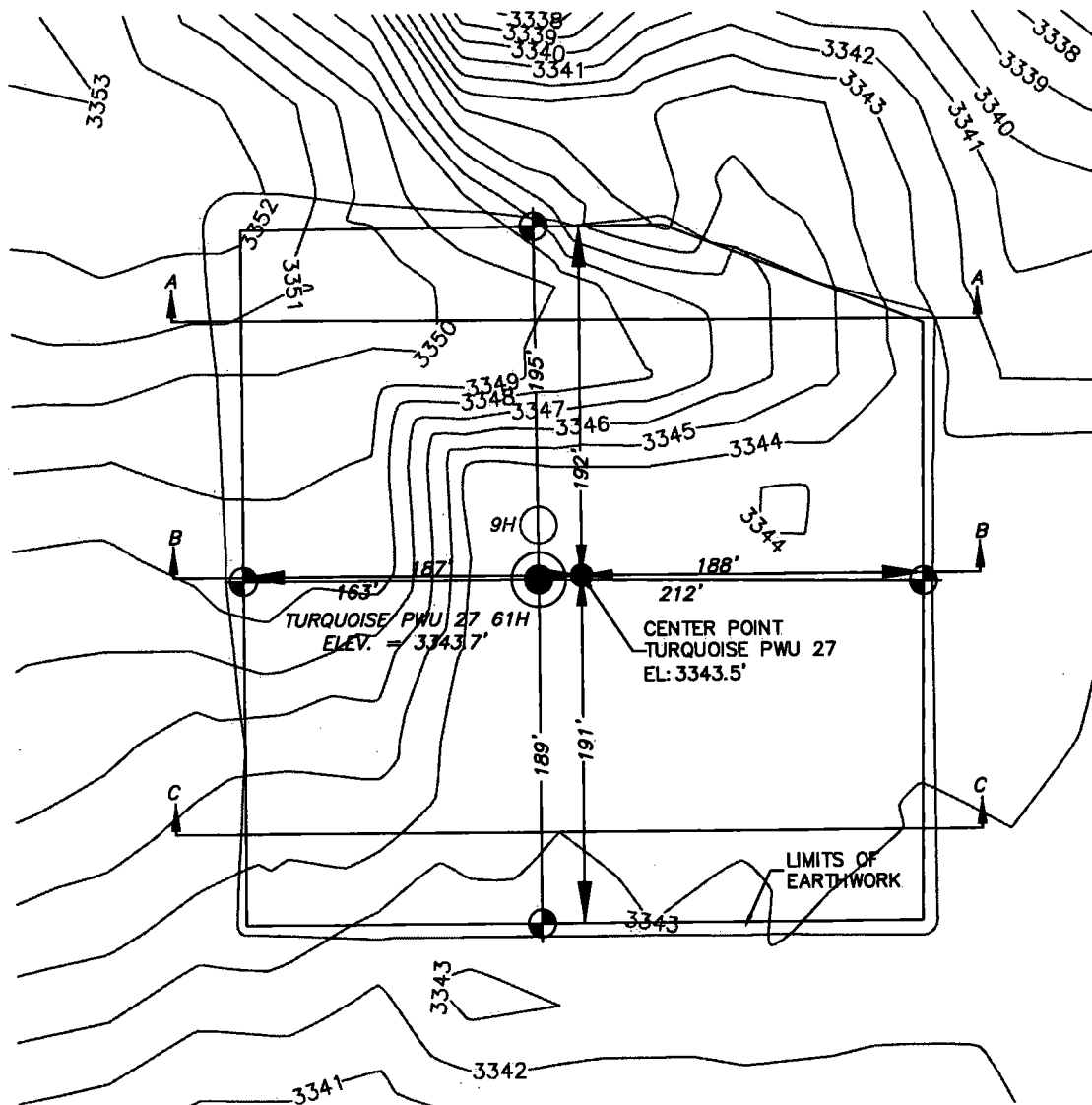
DEVON ENERGY PRODUCTION CO., L.P.

Drawn by:
CHRIS MAAS

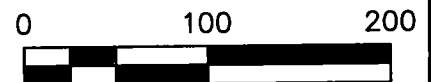
Date: 05/03/2018

devon

SECTION 27, TOWNSHIP 19 SOUTH, RANGE 29 EAST, N.M.P.M.
EDDY COUNTY, STATE OF NEW MEXICO
PLAN VIEW



DEVON ENERGY PRODUCTION COMPANY, L.P.
TURQUOISE PWU 27 61H
LOCATED 800 FT. FROM THE NORTH LINE
AND 165 FT. FROM THE WEST LINE OF
SECTION 27, TOWNSHIP 19 SOUTH,
RANGE 29 EAST, N.M.P.M.
EDDY COUNTY, STATE OF NEW MEXICO



EARTHWORK QUANTITIES FOR
TURQUOISE PWU 27

CUT	FILL	NET
5773 CY	5773 CY	0 CY

EARTHWORK QUANTITIES ARE ESTIMATED

HORIZON ROW LLC

DEVON ENERGY PRODUCTION CO., L.P.

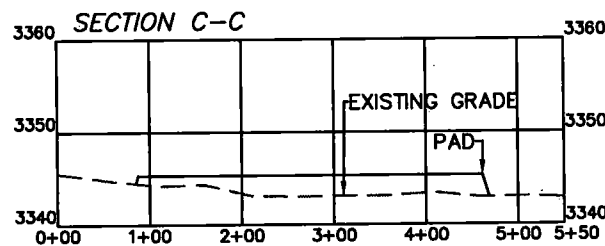
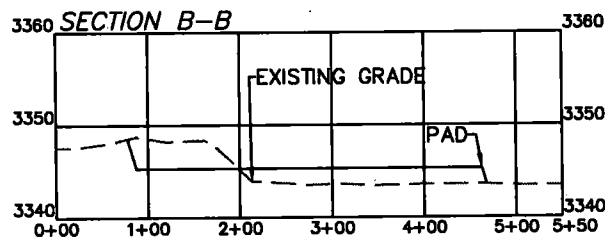
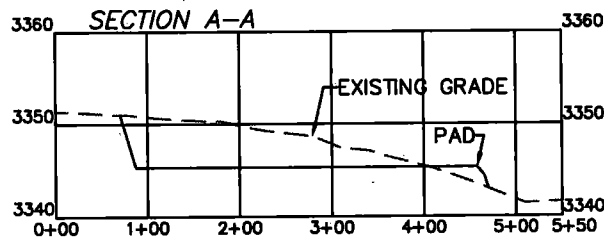
Drawn by:
CHRIS MAAS

Date: 05/04/2018

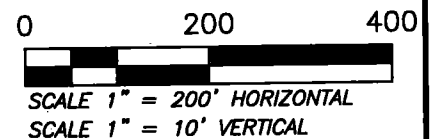
Drawn for:

devon

SECTION 27, TOWNSHIP 19 SOUTH, RANGE 29 EAST, N.M.P.M.
EDDY COUNTY, STATE OF NEW MEXICO
CROSS SECTIONS



DEVON ENERGY PRODUCTION COMPANY, L.P.
TURQUOISE PWU 27 61H
LOCATED 800 FT. FROM THE NORTH LINE
AND 165 FT. FROM THE WEST LINE OF
SECTION 27, TOWNSHIP 19 SOUTH,
RANGE 29 EAST, N.M.P.M.
EDDY COUNTY, STATE OF NEW MEXICO



EARTHWORK QUANTITIES FOR
TURQUOISE PWU 27

CUT	FILL	NET
5773 CY	5773 CY	0 CY

EARTHWORK QUANTITIES ARE ESTIMATED

HORIZON ROW LLC

DEVON ENERGY PRODUCTION CO., L.P.

Drawn by:
CHRIS MAAS

Date: 05/04/2018

Drawn for:

devon