

District I
1625 N. French Dr., Hobbs, NM 88240
Phone: (575) 393-6161 Fax: (575) 393-0720
District II
811 S. First St., Artesia, NM 88210
Phone: (575) 748-1283 Fax: (575) 748-9720
District III
1000 Rio Brazos Road, Aztec, NM 87410
Phone: (505) 334-6178 Fax: (505) 334-6170
District IV
1220 S. St. Francis Dr., Santa Fe, NM 87505
Phone: (505) 476-3460 Fax: (505) 476-3462

State of New Mexico
Energy, Minerals & Natural Resources Department
OIL CONSERVATION DIVISION
1220 South St. Francis Dr.
Santa Fe, NM 87505

Form C-102
Revised August 1, 2011
Submit one copy to appropriate
District Office
AMENDED REPORT

JUN 06 2018

WELL LOCATION AND ACREAGE DEDICATION

1 API Number 30-015 45021		2 Pool Code 98220		3 Pool Name Purple Sage Wolfcamp gas	
4 Property Code 321482		5 Property Name RIVERBEND 12-13 FEDERAL COM			6 Well Number 29H
7 OGRID No. 215099		8 Operator Name CIMAREX ENERGY CO.			9 Elevation 2937.2

"Surface Location

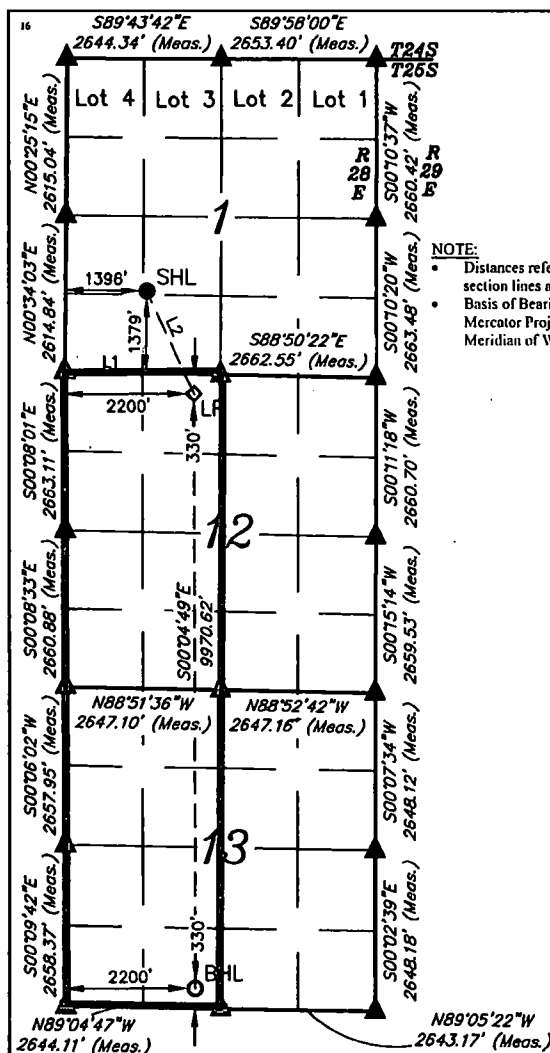
UL or lot no.	Section	Township	Range	Lot Idn	Feet from the	North/South line	Feet from the	East/West line	County
K	I	25S	28E		1379	SOUTH	1396	WEST	EDDY

"Bottom Hole Location If Different From Surface

UL or lot no.	Section	Township	Range	Lot Idn	Feet from the	North/South line	Feet from the	East/West line	County
N	13	25S	28E		330	SOUTH	2200	WEST	EDDY

10 Dedicated Acres 640	11 Joint or Infill	12 Consolidation Code	13 Order No.
---------------------------	--------------------	-----------------------	--------------

No allowable will be assigned to this completion until all interests have been consolidated or a non-standard unit has been approved by the division.



NOTE:
• Distances referenced on plat to section lines are perpendicular.
• Basis of Bearing is a Transverse Mercator Projection with a Central Meridian of W103°53'00"

- = SURFACE HOLE LOCATION
- ◆ = LANDING POINT
- = BOTTOM HOLE LOCATION
- ▲ = SECTION CORNER LOCATED

NAD 83 (SURFACE HOLE LOCATION)	
LATITUDE = 32°09'21.01" (32.155835)	
LONGITUDE = 104°02'41.78" (104.044939)	
NAD 27 (SURFACE HOLE LOCATION)	
LATITUDE = 32°09'20.56" (32.155712)	
LONGITUDE = 104°02'40.02" (104.044450)	
STATE PLANE NAD 83 (N.M. EAST)	
N: 420547.64 E: 630584.99	
STATE PLANE NAD 27 (N.M. EAST)	
N: 420489.37 E: 589400.83	

NAD 83 (BOTTOM HOLE LOCATION)	
LATITUDE = 32°07'25.30" (32.123694)	
LONGITUDE = 104°02'32.22" (104.042283)	
NAD 27 (BOTTOM HOLE LOCATION)	
LATITUDE = 32°07'24.86" (32.123572)	
LONGITUDE = 104°02'30.46" (104.041794)	
STATE PLANE NAD 83 (N.M. EAST)	
N: 408857.90 E: 631438.62	
STATE PLANE NAD 27 (N.M. EAST)	
N: 408799.85 E: 590254.17	

LINE TABLE		
LINE	DIRECTION	LENGTH
L1	S88°49'54"E	2665.14'
L2	S24°37'55"E	1897.82'



DRAWN BY: C.D. 03-28-17

REV: 2 12-18-17 C.D. (SHL CHANGE)

"OPERATOR
CERTIFICATION

I hereby certify that the information contained herein is true and complete to the best of my knowledge and belief, and that this organization either owns a working interest or unleased mineral interest in the land including the proposed bottom hole location or has a right to drill this well at this location pursuant to a contract with an owner of such a mineral or working interest, or to a voluntary pooling agreement or a compulsory pooling order heretofore entered by the division.

Signature: *Aricka Easterling* Date: 2/1/18

Aricka Easterling

Printed Name

aeasterling@cimarex.com

E-mail Address

"SURVEYOR
CERTIFICATION

I hereby certify that the well location shown on this plat was plotted from field notes of actual surveys made by me or under my supervision, and that the same is true and correct to the best of my belief.

December 12, 2017

Date of Survey

Signature and Seal of Professional Surveyor:



Certificate Number:

RWP 6-6-18

Operator Name: CIMAREX ENERGY COMPANY

Well Name: RIVERBEND 12-13 FEDERAL COM

Well Number: 29H

	NS-Foot	NS Indicator	EW-Foot	EW Indicator	Twsp	Range	Section	Aliquot/Lot/Tract	Latitude	Longitude	County	State	Meridian	Lease Type	Lease Number	Elevation	MD	TVD
EXIT Leg #1	630	FSL	220	FWL	25S	28E	13	Aliquot SESW	32.10429	104.1042	EDD Y	NEW MEXI CO	NEW MEXI CO	F	NMNM 016104	750	222	100
BHL Leg #1	630	FSL	220	FWL	25S	28E	13	Aliquot SESW	32.10429	104.1042	EDD Y	NEW MEXI CO	NEW MEXI CO	F	NMNM 016104	750	222	100