

District I
1625 N. French Dr., Hobbs, NM 88240
Phone: (575) 393-6161 Fax: (575) 393-4720

District II
811 S. First St., Artesia, NM 88210
Phone: (575) 748-1283 Fax: (575) 748-9720

District III
1000 Rio Brazos Road, Aztec, NM 87410
Phone: (505) 334-6178 Fax: (505) 334-6170

District IV
1220 S. St. Francis Dr., Santa Fe, NM 87505
Phone: (505) 476-3460 Fax: (505) 476-3462

State of New Mexico
Energy Minerals and Natural Resources
Oil Conservation Division
1220 South St. Francis
Santa Fe, NM 87505

RECEIVED

Form C-101
Revised July 18, 2013

JUL 26 2018

☐ AMENDED REPORT

DISTRICT II-ARTESIA O.C.D.

APPLICATION FOR PERMIT TO DRILL, RE-ENTER, DEEPEN, PLUGBACK, OR ADD A ZONE

Operator Name and Address Fasken Oil and Ranch, Ltd. 6101 Holiday Hill Road Midland, TX 79707		OGRID Number 151416	
		API Number 30-015-34535	
Property Code 18243	State "32" Com	Property Name	Well No. 3

7. Surface Location

UL - Lot F	Section 32	Township 20S	Range 25E	Lot Idn	Feet from 1980	N/S Line North	Feet From 1980	E/W Line West	County Eddy
---------------	---------------	-----------------	--------------	---------	-------------------	-------------------	-------------------	------------------	----------------

*** Proposed Bottom Hole Location**

UL - Lot	Section	Township	Range	Lot Idn	Feet from	N/S Line	Feet From	E/W Line	County
----------	---------	----------	-------	---------	-----------	----------	-----------	----------	--------

*** Pool Information**

Pool Name Dagger Draw; Up Penn, South (Assoc)	Pool Code 15475
---	---------------------------

Additional Well Information

11 Work Type P	12 Well Type G	13 Cable/Rotary R	14 Lease Type S	15 Ground Level Elevation 3618'
16 Multiple N	17 Proposed Depth 7693'	18 Formation Upper Penn	19 Contractor unknown	20 Spud Date 2/1/06
Depth to Ground water 183'		Distance from nearest fresh water well 2000'		Distance to nearest surface water greater than 1 mile

☒ We will be using a closed-loop system in lieu of lined pits

21. Proposed Casing and Cement Program

Type	Hole Size	Casing Size	Casing Weight/lb	Setting Depth	Sacks of Cement	Estimated TOC
	17 1/2"	13 3/8"	48	403'	760	
	12 1/4"	9 5/8"	36	2988'	800	
	8 3/4"	4 1/2"	11.6	9701'	1000	

Casing/Cement Program: Additional Comments

--

22. Proposed Blowout Prevention Program

Type	Working Pressure	Test Pressure	Manufacturer

23. I hereby certify that the information given above is true and complete to the best of my knowledge and belief.
I further certify that I have complied with 19.15.14.9 (A) NMAC ☐ and/or 19.15.14.9 (B) NMAC ☐, if applicable.

Signature: *Stephanie Gutierrez*

Printed name: Stephanie Gutierrez

Title: Regulatory Analyst

E-mail Address: stephanicg@forl.com

Date: 7/23/18

Phone: 432-687-1777

OIL CONSERVATION DIVISION

Approved By:

Title:

Approved Date: 7-26-18

Expiration Date: 7-26-20

Conditions of Approval Attached

District I
1625 N. French Dr., Hobbs, NM 88240
Phone: (575) 393-6161 Fax: (575) 393-0720
District II
811 S. First St., Artesia, NM 88210
Phone: (575) 748-1283 Fax: (575) 748-9720
District III
1000 Rio Brazos Road, Aztec, NM 87410
Phone: (505) 334-6178 Fax: (505) 334-6170
District IV
1220 S. St. Francis Dr., Santa Fe, NM 87505
Phone: (505) 476-3460 Fax: (505) 476-3462

State of New Mexico
Energy, Minerals & Natural Resources Department
OIL CONSERVATION DIVISION
1220 South St. Francis Dr.
Santa Fe, NM 87505

Form C-102
Revised August 1, 2011
Submit one copy to appropriate
District Office

☐ AMENDED REPORT

WELL LOCATION AND ACREAGE DEDICATION PLAT

¹ API Number 30-015-34535	² Pool Code 15475	³ Pool Name Dagger Draw; Up Penn, South (Assoc)
⁴ Property Code 18243	⁵ Property Name State "32" Com	⁶ Well Number 3
⁷ OGRID No. 151416	⁸ Operator Name Fasken Oil and Ranch, Ltd.	⁹ Elevation 3618'

" Surface Location

UL or lot no.	Section	Township	Range	Lot Idn	Feet from the	North/South line	Feet from the	East/West line	County
F	32	20S	25E		1980	North	1980	West	Eddy

" Bottom Hole Location If Different From Surface

UL or lot no.	Section	Township	Range	Lot Idn	Feet from the	North/South line	Feet from the	East/West line	County

¹² Dedicated Acres 320	¹³ Joint or Infill	¹⁴ Consolidation Code	¹⁵ Order No.
--------------------------------------	-------------------------------	----------------------------------	-------------------------

No allowable will be assigned to this completion until all interests have been consolidated or a non-standard unit has been approved by the division.

	<p>" OPERATOR CERTIFICATION I hereby certify that the information contained herein is true and complete to the best of my knowledge and belief, and that this organization either owns a working interest or unleased mineral interest in the land including the proposed bottom hole location or has a right to drill this well at this location pursuant to a contract with an owner of such a mineral or working interest, or to a voluntary pooling agreement or a compulsory pooling order heretofore entered by the division.</p> <p><i>Stephanie Gutierrez</i> 7/23/18 Signature Date</p> <p>Stephanie Gutierrez Printed Name</p> <p>stephanieg@forl.com E-mail Address</p>		
	<p>"SURVEYOR CERTIFICATION I hereby certify that the well location shown on this plat was plotted from field notes of actual surveys made by me or under my supervision, and that the same is true and correct to the best of my belief.</p> <p>Date of Survey Signature and Seal of Professional Surveyor:</p> <p>Certificate Number</p>		

State "32" Com No. 3
1980' FNL & 1980' FWL
Sec 32, T20S R25E

OBJECTIVE:	Plug Back to Canyon
WELL DATA:	
API Number:	30-015-34535
13-3/8" 48#/ft H-40 ST&C casing:	Set at 403.30' KB Cmt w/600 sx "C"+1" w/9 plugs tot 160 sx+2 cu yds ready mix. Cement at surface.
9-5/8" 36.0#/ft J-55 LT&C casing:	Set at 2988.48' KB, Cmt w/ 600 sx "C" w/4% gel+200 sx "C" w/2% CaCl ₂ , circ 122 sx to surf.
4-1/2" 11.6# N-80 LT&C casing:	Set at 9,701.09' Cmt w/1000 sx Howco Super "C". Did not bump plug. WL dept PBTD 9675'. TOC 5800' by temp survey. Marker jts 11.00 @ 9,295.74', 11.20' @ 8,480.65'
Casing Leak:	Sqz 1-24-10: 4686'-59' w/350 sx 65/35/ "C" + 150 sx "C" heat. TOC 2800'.
Perforations:	Atoka and Morrow down hole commingled 2009: Atoka 2-6-10: 8914'-18' (5h), 9010'-23' (14h). Frac plug 2-4-10: 4-1/2" 10k flow thru "reported" at 9350' valve. Depth is probably +/-9370' (EOT current Tbg tally is 9364' KB). Morrow 5-5-06: 9406'-14' (16h); 9417'-21' (8h); 9437'-40' (6h); 9518'-24' (12h); 9574'-78' (24h). Morrow 4-26-06 9574'-78' (9h).
Tubing 2-6-10:	2-3/8" EUE 8 rd. Notched Coupling (0.40'), 15 jts 2-3/8" EUE 8rd N-80 tail pipe (487.19'), 4-1/2" Arrowset IX 10 k packer, w/1.875" "F" profile, TOSSD (7.90'), 272 jts 2-3/8" EUE 8rd N-80 tubing (8840.70'), 4' x 2-3/8" EUE 8rd N-80 sub (4.00'), 8' x 2-3/8" EUE 8rd N-80 sub (8.00'). EOT 9364.19' KB.
TD:	9,700'
PBTD:	9653' (FC)
Status:	Well shutin

1. Test mast anchors.
2. Set test tank and lay flowline.
3. RUPU. Receive 6 jts 2-3/8" EUE 8rd N80 tubing to tag PBTD.
4. RU pump truck and kill well w/ 35 bbls 2% KCL w/corrosion inhibitor, biocide, and oxygen scavenger.
5. NDWH, NU BOP.
6. Release packer, POW with 8' x 2-3/8" EUE 8rd N-80 sub (8.00'), 4' x 2-3/8" EUE 8rd N-80 sub (4.00'), 272 jts 2-3/8" EUE 8rd N-80 tubing (8840.70'), 4-1/2" Arrowset IX 10 k packer, w/1.875" "F" profile, TOSSD (7.90'), 15 jts 2-3/8" EUE 8rd N-80 tail pipe (487.19'), 2-3/8" EUE 8 rd. Notched Coupling (0.40').
7. RIW with 4-1/2" CIBP, 4' perforated sub, SN, 2-3/8 EUE 8rd 4.7#/ft N-80 tubing, and set CIBP at +/-9340' (minimum 50' above top perforation at 9406').
8. RU pump truck and load the well with fresh water. Test casing and plug to 500 psi on chart recorder w/1 hr clock (calibrated within last 6 months).
9. RU cementers and pump 8 bbls 9.5 ppg mud laden brine water containing 12.5#/bbl salt gel, 1 bbl freshwater spacer and spot 25 sx class "H" cement (1.07 cuft/sk yield) above CIBP 9340' for a PBTD of 9033'. Displace cement with 1 bbl fresh water spacer and 2% Kcl water. POW 10 stands and WOC 4 hours and tag plug at 9033'.
10. POW with 2-3/8" EUE 8rd 4.7#/ft N-80 tubing, SN, PS.
11. RIW with 4-1/2" CIBP, 4' perforated sub, SN, 2-3/8 EUE 8rd 4.7#/ft N-80 tubing, and set CIBP at +/-8850' (minimum 50' above top perforation at 8914').

12. RU pump truck and load the well with fresh water. Test casing and plug to 500 psi on chart recorder w/1 hr clock (calibrated within last 6 months).
13. RU cementers and pump 13 bbls 9.5 ppg mud laden brine water containing 12.5#/bbl salt gel, 1 bbl freshwater spacer and spot 25 sx class "H" cement (1.07 cuft/sk yield) above CIBP 8850' for a PBTD of 8543' (bottom of Canyon perforations 7698'). Displace cement with 1 bbl fresh water spacer and 2% Kcl water. POW 10 stands and WOC 4 hours and tag plug at 8593'.
14. POW laying down 40 joints 2-3/8" EUE 8rd 4.7#/ft N-80 tubing.
15. RIW with 2-3/8" EUE 8rd WL entry guide, 2-3/8"x10' EUE 8rd N-80 tubing sub, Arrowset IX 10k packer, TOSSD with 1.875" "F" profile nipple, about 281 joints 2-3/8" EUE 8rd 4.7#/ft N-80 tubing to and set packer at +/- 7605'.
16. Release TOSSD and circulate well with 2% KCL water w/corrosion inhibitor, biocide, and oxygen scavenger.
17. ND BOP. NUWH double valve flow tree, setting packer in 12 points compression.
18. Swab tubing volume to 6000' from surface.
19. RUWL with 3000 psi lubricator and grease. Perforate Canyon with 1-11/16" Gamma strip gun as follows:
 7692' – 98' (13h, 2.JSPF)
 13 total holes by Halliburton Spectral Density/Dual Spaced Neutron Log dated 29-Apr-2006. POW, checking that all shots fired, and RDWL.
20. Flow test, swab and evaluate fluid entry.
21. If stimulation necessary, RU pumping service. Trap 500 psi on annulus. Acidize Canyon perfs 7692'-98' (13h) via 2-3/8" tubing with 750 gal 15% NEFE HCL acid. Rate 2-4 bpm at max pressure 3000 psi. RD stimulation service.
22. Swab and flow back acid and load water to steel test tank and evaluate.
23. Flow well and evaluate.
24. Return well to sales.
25. RDPU.

7-20-18

State "32" Com No. 3

Current as of 2-6-10

Operator: **Fasken Oil and Ranch, Ltd.**

Location: 1980' FNL and 1980' FWL
Sec 32, T20S, R25E
Eddy County, NM

Compl.: 03/28/2006 released rig

API #: 30-015-34535

TD: 9700'

PBTD: 9,653' (FC 9653' did not bmp plg)

Fill: 9480' by WL after frac

Casing: 13-3/8" 48# H-40 @ 403.30'

w/200 sx "C"+10%CaSeal&2% CaCl2

+400 sx "C" w/2% CaCl2+

1"w/9 plgs tot 160sx+2yd3 ready mix

TOC surf

9-5/8" 36# J-55 @ 2988.48' KB

w/600sx "C" w/4%gel+200sx "C"

TOC surf

4-1/2" 11.6# N-80 LT&C@ 9,701.09'

1000 sx Howco Super "H" (13.2ppg, 1.60ft³/sk)

TOC 5800' by Temp, Primary cmt

Tubing: 2-3/8" collar 0.40

2/6/2010 2-3/8" EUE 8rd N-80 tail pipe 487.19

4-1/2" Arrowset IX 10 k packer, w/ 7.90

AJL: 1.875" "F" profile, TOSSD

32.50 272 jts 2-3/8" EUE 8rd N-80 tubing 8840.70

4' x 2-3/8" EUE 8rd N-80 sub 4.00

8' x 2-3/8" EUE 8rd N-80 sub 8.00

Tot 9348.19

KB 16.00

EOT 9364.19

2/27/2008 Cleaned out frac sand from 9517'-9653' w/foam unit

Atoka:

8914'-18' 1jspf 2/6/2010

9010'-23' 1jspf 2/6/2010

Frac plg Rptd 9350' 4-1/2" 10k, flow thru 2/4/2010

Perfs: Morrow Perfs

9406'-14' 2jspf, 16h, 0.42" EHD 5/5/2006

9417'-21' 2jspf, 8h, 0.42" EHD 5/5/2006

9437'-40' 2jspf, 6h, 0.42" EHD 5/5/2006

9518'-24' 2jspf, 12h, 0.42" EHD 5/5/2006

9574'-78' 4jspf, 16h, 0.42" EHD 5/5/2006

9574'-78' 2jspf, 8h 4/26/2006

Hole Sizes 17-1/2" 418', 12-1/4" 2990', 8-3/4" 9700'

Well shutin

GL: 3618'

KB: 3635.5'

13-3/8" 48# H-40 @ 403.30'

w/200 sx "C"+10%CaSeal&2% CaCl2

+400 sx "C" w/2% CaCl2+

TOC surf

TOC 2800' Remedial cmt

9-5/8" 36# J-55 @ 2988.48' KB

w/600sx "C" w/4%gel+200sx "C"

TOC surf

1/24/2010

Sqz Csg lk 4826' - 4859' w/500 sx

TOC 5800' by Temp, Primary cmt

Pkr 8876.60

8914'-18'

9010'-23'

EOT 9364.19

+/-9370' flow thru frac plug

Morrow

9406-9578'

PBTD: 9,653' (FC 9653' did not bmp plg)

TD: 9700'

4-1/2" 11.6# N-80 LT&C@ 9,701.09'

Did not bump wiper plg, Drld out

cwb

7/20/2018

State 32 Com 3 wb diagram.xls

State "32" Com No. 3

Proposed as of 7-20-18

Operator: **Fasken Oil and Ranch, Ltd.**

Location: 1980' FNL and 1980' FWL

Sec 32, T20S, R25E

Eddy County, NM

Compl.: 03/28/2006 released rig

API #: 30-015-34535

TD: 9700'

PBTD: 9,653' (FC 9653' did not bmp plg)

Fill: 9480' by WL after frac

Casing: 13-3/8" 48# H-40 @ 403.30'

w/200 sx "C"+10%CaCseal&2% CaCl2

+400 sx "C" w/2% CaCl2+

1"w/9 plgs tot 160sx+2yd3 ready mix

TOC surf

9-5/8" 36# J-55 @ 2988.48' KB

w/600sx "C" w/4%gel+200sx "C"

TOC surf

4-1/2" 11.6# N-80 LT&C@ 9,701.09'

1000 sx Howco Super "H" (13.2ppg, 1.60ft³/sk)

TOC 5800' by Temp, Primary cmt

Proposed

Tubing:	3-1/2" WL entry guide	0.40
	2-3/8"x10' EUE 8rd N-80 tbg sub	10.00
	4-1/2" Arrowset IX 10k w/	6.20
AJL:	3-3/4"x2-3/8" TOSSDw/1.875" "F" PN	1.70
32.50	234 jts 2-3/8" EUE 8rd N-80 tbg	<u>7605.00</u>
	Total	7623.30
	KB	17.00
	Slackoff (23pts)	-1.00
	EOT	7639.30

Canyon 7692'-98' (13h, 2spf, 0.23")

Plug2 8543'-8850' 25 sx "H"

CIBP 8850'

2/27/2008 Cleaned out frac sand from 9517'-9653' w/foam unit

Atoka: 8914'-18' 1jspf 2/6/2010

9010'-23' 1jspf 2/6/2010

Plug2 9033'-9340' 25 sx "H" **Tag**

CIBP 9340'

Frac plg Rptd 9350' 4-1/2" 10k, flow thru 2/4/2010

Morrow: 9406'-14' 2jspf, 16h, 0.42" EHD 5/5/2006

9417'-21' 2jspf, 8h, 0.42" EHD 5/5/2006

9437'-40' 2jspf, 6h, 0.42" EHD 5/5/2006

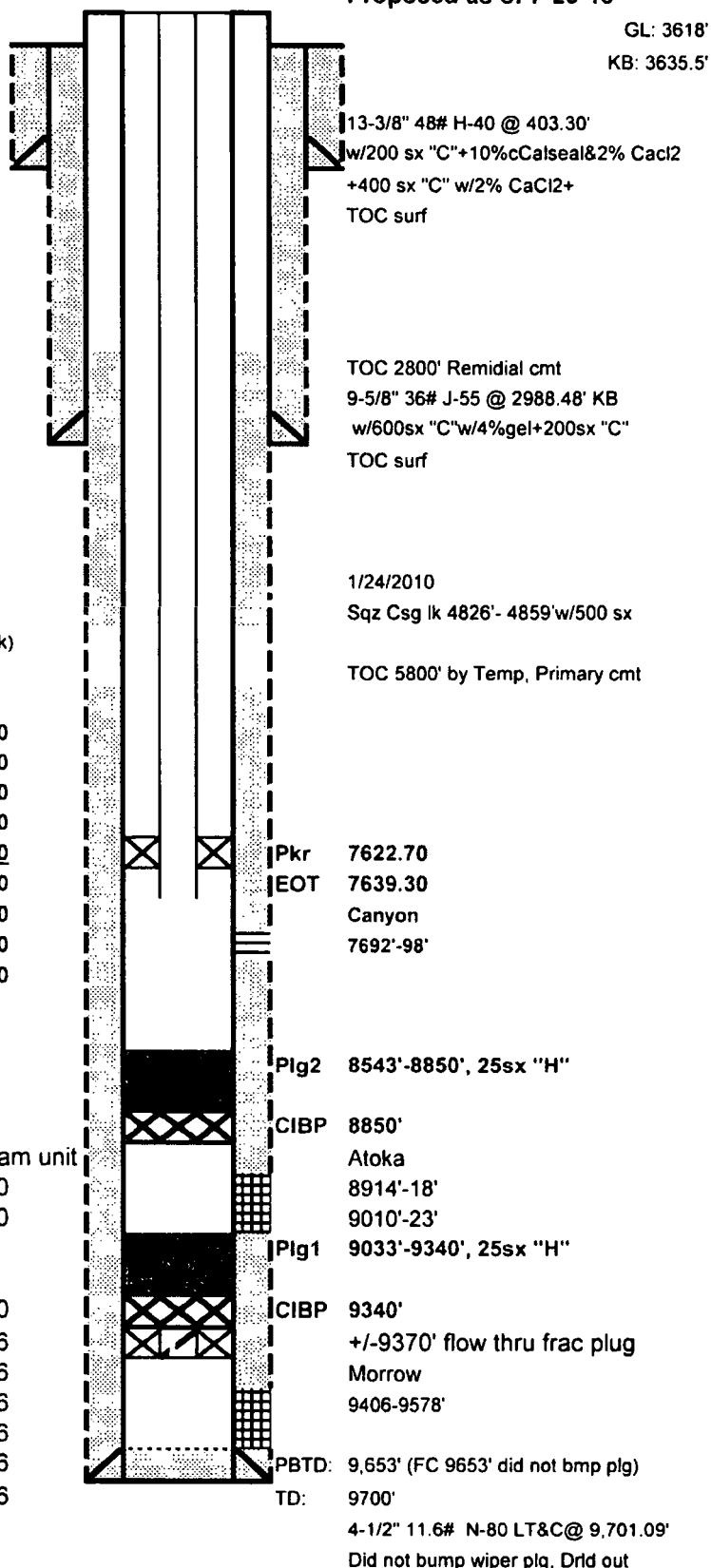
9518'-24' 2jspf, 12h, 0.42" EHD 5/5/2006

9574'-78' 4jspf, 16h, 0.42" EHD 5/5/2006

9574'-78' 2jspf, 8h 4/26/2006

Hole Sizes 17-1/2" 418', 12-1/4" 2990', 8-3/4" 9700'

Well shutin



cwb

7/20/2018

State 32 Com 3 wb diagram.xls