

UNITED STATES
DEPARTMENT OF THE INTERIOR
BUREAU OF LAND MANAGEMENT

RECEIVED
OCD Artesia

AUG 07 2018

FORM APPROVED
OMB No. 1004-0137
Expires: July 31, 2010

WELL COMPLETION OR RECOMPLETION REPORT AND LOG

5. Lease Serial No.
NMNM53229

6. If Indian, Allottee or Tribe Name

7. Unit or CA Agreement Name and No.

8. Lease Name and Well No.
CEDAR CANYON 29 FEDERAL 26H

9. API Well No.
30-015-44523-00-S1

10. Field and Pool, or Exploratory
PIERCE CROSSING

11. Sec., T., R., M., or Block and Survey
or Area Sec 29 T24S R29E Mer NMP

12. County or Parish
EDDY

13. State
NM

17. Elevations (DF, KB, RT, GL)*
2928 GL

22. Was well cored? ☒ No ☐ Yes (Submit analysis)
Was DST run? ☒ No ☐ Yes (Submit analysis)
Directional Survey? ☐ No ☒ Yes (Submit analysis)

1a. Type of Well ☒ Oil Well ☐ Gas Well ☐ Dry ☐ Other

b. Type of Completion ☒ New Well ☐ Work Over ☐ Deepen ☐ Plug Back ☐ Diff. Resvr.
Other

2. Name of Operator
OXY USA INCORPORATED

Contact: JANA MENDIOLA
E-Mail: janalyn_mendiola@oxy.com

3. Address
5 GREENWAY PLAZA SUITE 110
HOUSTON, TX 77046-0521

3a. Phone No. (include area code)
Ph: 432-685-5936

4. Location of Well (Report location clearly and in accordance with Federal requirements)*

At surface NWSW 1610FSL 420FWL 32.185562 N Lat, 104.013801 W Lon

At top prod interval reported below SWSW 486FSL 372FWL 32.182348 N Lat, 104.014043 W Lon

At total depth SESE 419FSL 183FEL 32.182272 N Lat, 103.998664 W Lon

14. Date Spudded
11/15/2017

15. Date T.D. Reached
01/11/2018

16. Date Completed
☐ D & A ☒ Ready to Prod.
02/09/2018

18. Total Depth: MD 13395
TVD 8630

19. Plug Back T.D.: MD 13339
TVD 8628

20. Depth Bridge Plug Set: MD
TVD

21. Type Electric & Other Mechanical Logs Run (Submit copy of each)
MUDLOG

23. Casing and Liner Record (Report all strings set in well)

Hole Size	Size/Grade	Wt. (#/ft.)	Top (MD)	Bottom (MD)	Stage Cementer Depth	No. of Sk. & Type of Cement	Slurry Vol. (BBL)	Cement Top*	Amount Pulled
19	14.750	10.750 J55	45.5	0	616	680	160	0	
3P	6.750	5.500 P110	20.0	0	7796	678	163	7809	
2D	9.875	7.625 L80	29.7	0	8012	2844	1653	539	0
3P	6.750	4.500 P110	13.5	7796	13390	678	163	7809	

24. Tubing Record

Size	Depth Set (MD)	Packer Depth (MD)	Size	Depth Set (MD)	Packer Depth (MD)	Size	Depth Set (MD)	Packer Depth (MD)

25. Producing Intervals

Formation	Top	Bottom	Perforated Interval	Size	No. Holes	Perf. Status
A) BONE SPRING 2ND	8633	13231	8633 TO 13231	0.420	920	ACTIVE
B)						
C)						
D)						

27. Acid, Fracture, Treatment, Cement Squeeze, Etc.

Depth Interval	Amount and Type of Material
8633 TO 13231	5477254G SLICK WATER + 23016G 7.5% HCL ACID W/ 6942094# SAND

28. Production - Interval A

Date First Produced	Test Date	Hours Tested	Test Production	Oil BBL	Gas MCF	Water BBL	Oil Gravity Corr. API	Gas Gravity	Production Method
02/10/2018	02/20/2018	24	→	2918.0	3592.0	2167.0			FLows FROM WELL
Choke Size	Tbg. Press. Flwg. SI	Csg. Press.	24 Hr. Rate	Oil BBL	Gas MCF	Water BBL	Gas:Oil Ratio	Well Status	
72/128	SI	1028.0	→	2918	3592	2167	1231	POW	

28a. Production - Interval B

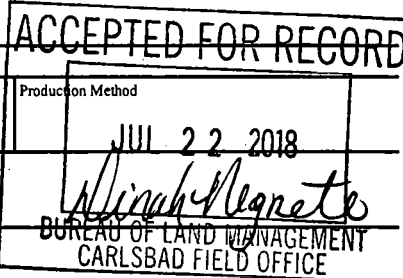
Date First Produced	Test Date	Hours Tested	Test Production	Oil BBL	Gas MCF	Water BBL	Oil Gravity Corr. API	Gas Gravity	Production Method
			→						
Choke Size	Tbg. Press. Flwg. SI	Csg. Press.	24 Hr. Rate	Oil BBL	Gas MCF	Water BBL	Gas:Oil Ratio	Well Status	
	SI		→						

(See Instructions and spaces for additional data on reverse side)

ELECTRONIC SUBMISSION #413567 VERIFIED BY THE BLM WELL INFORMATION SYSTEM

** BLM REVISED ** BLM REVISED ** BLM REVISED ** BLM REVISED ** BLM REVISED **

Reclamation Due: 8/9/2018



28b. Production - Interval C

Date First Produced	Test Date	Hours Tested	Test Production →	Oil BBL	Gas MCF	Water BBL	Oil Gravity Corr. API	Gas Gravity	Production Method
Choke Size	Tbg. Press. Flwg. SI	Csg. Press.	24 Hr. Rate →	Oil BBL	Gas MCF	Water BBL	Gas:Oil Ratio	Well Status	

28c. Production - Interval D

Date First Produced	Test Date	Hours Tested	Test Production →	Oil BBL	Gas MCF	Water BBL	Oil Gravity Corr. API	Gas Gravity	Production Method
Choke Size	Tbg. Press. Flwg. SI	Csg. Press.	24 Hr. Rate →	Oil BBL	Gas MCF	Water BBL	Gas:Oil Ratio	Well Status	

29. Disposition of Gas(Sold, used for fuel, vented, etc.)
SOLD

30. Summary of Porous Zones (Include Aquifers):

Show all important zones of porosity and contents thereof: Cored intervals and all drill-stem tests, including depth interval tested, cushion used, time tool open, flowing and shut-in pressures and recoveries.

31. Formation (Log) Markers

Formation	Top	Bottom	Descriptions, Contents, etc.	Name	Top
					Meas. Depth
BELL CANYON	2826	3667	OIL, GAS, WATER	RUSTLER	288
CHERRY CANYON	3668	4962	OIL, GAS, WATER	SALADO	636
BRUSHY CANYON	4963	6427	OIL, GAS, WATER	CASTILE	1323
BONE SPRING	6428	7619	OIL, GAS, WATER	DELAWARE	2797
BONE SPRING 1ST	7620	8429	OIL, GAS, WATER	BELL CANYON	2826
BONE SPRING 2ND	8430	8630	OIL, GAS, WATER	CHERRY CANYON	3668
				BRUSHY CANYON	4963
				BONE SPRING	6428

32. Additional remarks (include plugging procedure):

52. FORMATION (LOG) MARKERS CONTD.

1ST BONE SPRING 7620' MD
2ND BONE SPRING 8430' MD

Logs were mailed 5/4/18.

33. Circle enclosed attachments:

- | | | | |
|---|--------------------|---------------|-----------------------|
| 1. Electrical/Mechanical Logs (1 full set req'd.) | 2. Geologic Report | 3. DST Report | 4. Directional Survey |
| 5. Sundry Notice for plugging and cement verification | 6. Core Analysis | 7 Other: | |

34. I hereby certify that the foregoing and attached information is complete and correct as determined from all available records (see attached instructions):

Electronic Submission #413567 Verified by the BLM Well Information System.

For OXY USA INCORPORATED, sent to the Carlsbad

Committed to AFMSS for processing by DUNCAN WHITLOCK on 05/08/2018 (18DW0149SE)

Name (please print) DAVID STEWART

Title REGULATORY ADVISOR

Signature _____ (Electronic Submission)

Date 05/03/2018

Title 18 U.S.C. Section 1001 and Title 43 U.S.C. Section 1212, make it a crime for any person knowingly and willfully to make to any department or agency of the United States any false, fictitious or fraudulent statements or representations as to any matter within its jurisdiction.

**** REVISED ** REVISED ** REVISED ** REVISED ** REVISED ** REVISED ** REVISED ** REVISED ****

Additional data for transaction #413567 that would not fit on the form

32. Additional remarks, continued

Log Header, Directional Survey, As-Drilled Amended C-102 plat & WBD are attached.

District I
1625 N. French Dr., Hobbs, NM 88240
Phone: (575) 393-6161 Fax: (575) 393-0720
District II
811 S. First St., Artesia, NM 88210
Phone: (575) 748-1283 Fax: (575) 748-9720
District III
1000 Rio Brazos Road, Aztec, NM 87410
Phone: (505) 334-6178 Fax: (505) 334-6170
District IV
1228 S. St. Francis Dr., Santa Fe, NM 87505
Phone: (505) 476-3460 Fax: (505) 476-3462

State of New Mexico
Energy, Minerals & Natural Resources Department
OIL CONSERVATION DIVISION
1220 South St. Francis Dr.
Santa Fe, NM 87505

Form C-102
Revised August 1, 2011
Submit one copy to appropriate
District Office

☒ AMENDED REPORT
(As-Drilled)

WELL LOCATION AND ACREAGE DEDICATION PLAT

API Number 30-015-44523	Pool Code 50371	Pool Name Pierce Crossing Bone Spring
Property Code 304791	Property Name CEDAR CANYON "29" FEDERAL COM	Well Number 26H
OGRID No. 16696	Operator Name OXY USA INC.	Elevation 2928.4'

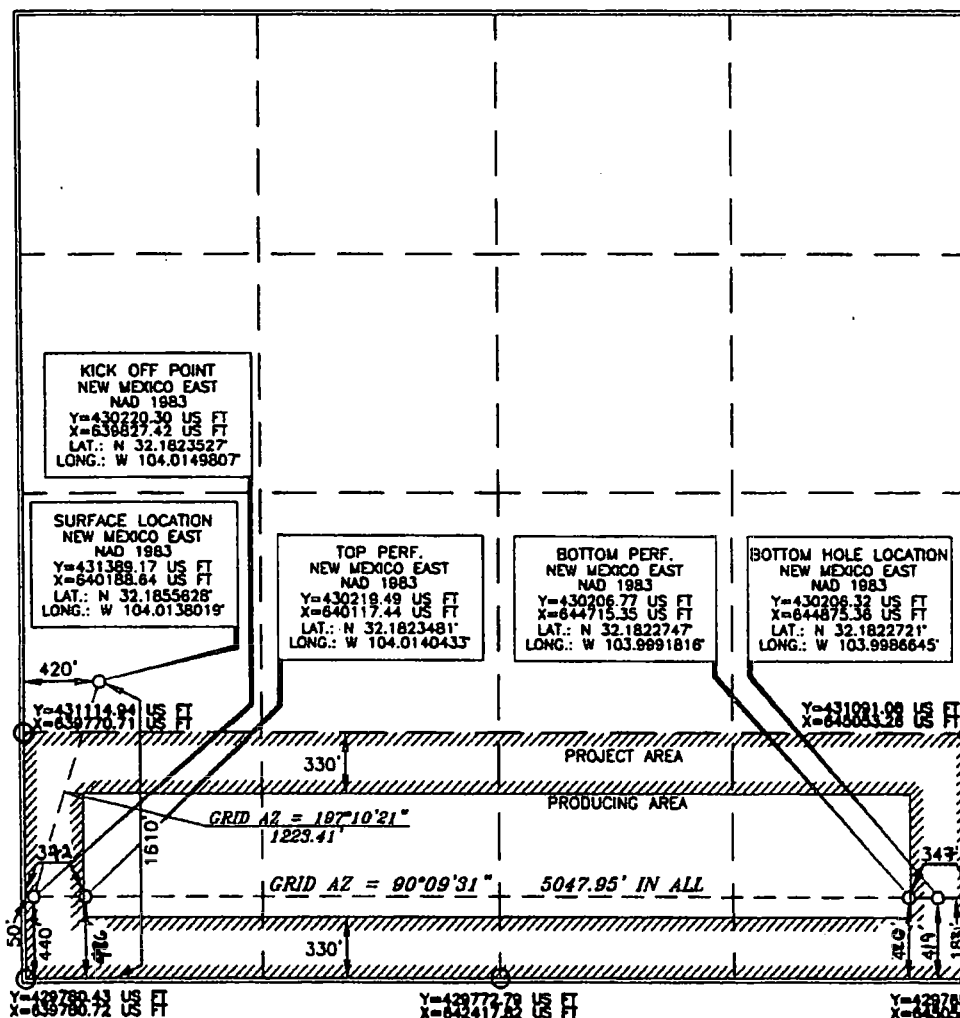
Surface Location

UL or lot no.	Section	Township	Range	Lot Idn	Feet from the	North/South line	Feet from the	East/West line	County
L	29	24 SOUTH	29 EAST, N.M.P.M.		1610'	SOUTH	420'	WEST	EDDY

Bottom Hole Location If Different From Surface

UL or lot no.	Section	Township	Range	Lot Idn	Feet from the	North/South line	Feet from the	East/West line	County
P	29	24 SOUTH	29 EAST, N.M.P.M.		419'	SOUTH	189'	EAST	EDDY
Dedicated Acres 160	Joint or Infill Y	Consolidation Code	Order No.	BP- 420 FSL 347 FEL TP- 486 FSL 372 FWL					

No allowable will be assigned to this completion until all interests have been consolidated or a non-standard unit has been approved by the division.



OPERATOR CERTIFICATION

I hereby certify that the information contained herein is true and complete to the best of my knowledge and belief, and that this organization either owns a working interest or unleased mineral interest in the land including the proposed bottom hole location or has a right to drill this well at this location pursuant to a contract with an owner of such a mineral or working interest, or to a voluntary pooling agreement or a compulsory pooling order heretofore entered by the division.

[Signature] 1/30/18
Signature Date
Jana Mendiola
Printed Name
janalyn_mendiola@oxy.com
E-mail Address

SURVEYOR CERTIFICATION

I hereby certify that the location shown on this plat was plotted from field notes of actual surveys made by me or under my supervision and that the same is true and correct to the best of my belief.

[Signature] 3/16/2017
Date of Survey
Professional Land Surveyor
Certificate Number 15079