

UNITED STATES
DEPARTMENT OF THE INTERIOR
BUREAU OF LAND MANAGEMENTFORM APPROVED
OMB No. 1004-0137
Expires: July 31, 2010WELL COMPLETION OR RECOMPLETION REPORT
DISTRICT 1 ARTESIA O.C.D.5. Lease Serial No.
NMNM0319631a. Type of Well ☒ Oil Well ☐ Gas Well ☐ Dry ☐ Other
b. Type of Completion ☒ New Well ☐ Work Over ☐ Deepen ☐ Plug Back ☐ Diff. Resvr.
Other _____

6. If Indian, Allottee or Tribe Name

7. Unit or CA Agreement Name and No.

2. Name of Operator
OXY USA INCORPORATEDContact: JANA MENDIOLA
E-Mail: janalyn_mendiola@oxy.com8. Lease Name and Well No.
SUNRISE MDP1 8-5 FEDERAL COM 5H3. Address
5 GREENWAY PLAZA SUITE 110
HOUSTON, TX 77046-05213a. Phone No. (include area code)
Ph: 432-685-59369. API Well No.
30-015-44476-00-S1

4. Location of Well (Report location clearly and in accordance with Federal requirements)*

At surface SWSE 834FSL 1555FEL 32.226888 N Lat, 103.796331 W Lon
Sec 8 T24S R31E Mer NMPAt top prod interval reported below SESE 351FSL 1262FEL 32.225562 N Lat, 103.795386 W Lon
Sec 5 T24S R31E Mer NMP

At total depth Lot 2 195FNL 1337FEL 32.253122 N Lat, 103.795598 W Lon

10. Field and Pool, or Exploratory
COTTON DRAW11. Sec., T., R., M., or Block and Survey
or Area Sec 8 T24S R31E Mer NMP12. County or Parish
EDDY13. State
NM14. Date Spudded
11/26/201715. Date T.D. Reached
01/29/201816. Date Completed
☐ D & A ☒ Ready to Prod.
03/17/201817. Elevations (DF, KB, RT, GL)*
3543 GL18. Total Depth: MD 20490
TVD 993319. Plug Back T.D.: MD 20394
TVD 994220. Depth Bridge Plug Set: MD
TVD21. Type Electric & Other Mechanical Logs Run (Submit copy of each)
MUDLOG22. Was well cored? ☒ No ☐ Yes (Submit analysis)
Was DST run? ☒ No ☐ Yes (Submit analysis)
Directional Survey? ☐ No ☒ Yes (Submit analysis)

23. Casing and Liner Record (Report all strings set in well)

Hole Size	Size/Grade	Wt. (#/ft.)	Top (MD)	Bottom (MD)	Stage Cementer Depth	No. of Sks. & Type of Cement	Slurry Vol. (BBL)	Cement Top*	Amount Pulled
17.500	13.375 J55	54.5	0	714		910	219	0	
12.250	9.625 L80	47.0	0	4449		1380	446	0	
8.500	5.500 P110	20.0	0	20445		2950	902	384	

24. Tubing Record

Size	Depth Set (MD)	Packer Depth (MD)	Size	Depth Set (MD)	Packer Depth (MD)	Size	Depth Set (MD)	Packer Depth (MD)
2.375	9420	9420						

25. Producing Intervals

26. Perforation Record

Formation	Top	Bottom	Perforated Interval	Size	No. Holes	Perf. Status
A) BONE SPRING 2ND	10450	20234	10450 TO 20234	0.370	1176	ACTIVE
B)						
C)						
D)						

27. Acid, Fracture, Treatment, Cement Squeeze, Etc.

Depth Interval	Amount and Type of Material
10450 TO 20234	16011702G SLICKWATER + 48972G 7.5% HCL ACID W/19635998# SAND

28. Production - Interval A

Date First Produced	Test Date	Hours Tested	Test Production	Oil BBL	Gas MCF	Water BBL	Oil Gravity Corr. API	Gas Gravity	Production Method
03/18/2018	03/28/2018	24	→	3091.0	3930.0	6205.0			GAS LIFT
Choke Size	Tbg. Press. Flwg.	Csg. Press.	24 Hr. Rate	Oil BBL	Gas MCF	Water BBL	Gas:Oil Ratio	Well Status	
73/128	SI	883.0	→	3091	3930	6205	1271		

28a. Production - Interval B

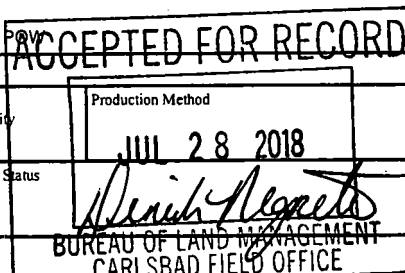
Date First Produced	Test Date	Hours Tested	Test Production	Oil BBL	Gas MCF	Water BBL	Oil Gravity Corr. API	Gas Gravity	Production Method
			→						
Choke Size	Tbg. Press. Flwg.	Csg. Press.	24 Hr. Rate	Oil BBL	Gas MCF	Water BBL	Gas:Oil Ratio	Well Status	
	SI		→						

(See Instructions and spaces for additional data on reverse side)

ELECTRONIC SUBMISSION #423806 VERIFIED BY THE BLM WELL INFORMATION SYSTEM

** BLM REVISED ** BLM REVISED ** BLM REVISED ** BLM REVISED ** BLM REVISED **

Reclamation Due: 9/17/2018



28b. Production - Interval C

Date First Produced	Test Date	Hours Tested	Test Production	Oil BBL	Gas MCF	Water BBL	Oil Gravity Corr. API	Gas Gravity	Production Method
			→						
Choke Size	Tbg. Press. Flwg. SI	Csg. Press.	24 Hr. Rate	Oil BBL	Gas MCF	Water BBL	Gas:Oil Ratio	Well Status	
			→						

28c. Production - Interval D

Date First Produced	Test Date	Hours Tested	Test Production	Oil BBL	Gas MCF	Water BBL	Oil Gravity Corr. API	Gas Gravity	Production Method
			→						
Choke Size	Tbg. Press. Flwg. SI	Csg. Press.	24 Hr. Rate	Oil BBL	Gas MCF	Water BBL	Gas:Oil Ratio	Well Status	
			→						

29. Disposition of Gas(Sold, used for fuel, vented, etc.)
SOLD

30. Summary of Porous Zones (Include Aquifers):

Show all important zones of porosity and contents thereof: Cored intervals and all drill-stem tests, including depth interval tested, cushion used, time tool open, flowing and shut-in pressures and recoveries.

31. Formation (Log) Markers

Formation	Top	Bottom	Descriptions, Contents, etc.	Name	Top
					Meas. Depth
BELL CANYON	4402	5334	OIL, GAS, WATER	RUSTLER	665
CHERRY CANYON	5335	6540	OIL, GAS, WATER	SALADO	1015
BRUSHY CANYON	6541	8331	OIL, GAS, WATER	CASTILE	2902
BONE SPRING	8332	9322	OIL, GAS, WATER	DELAWARE	4377
BONE SPRING 1ST	9323	9969	OIL, GAS, WATER	BELL CANYON	4402
BONE SPRING 2ND	9970		OIL, GAS, WATER	CHERRY CANYON	5335
				BRUSHY CANYON	6541
				BONE SPRING	8332

32. Additional remarks (include plugging procedure):

52. FORMATION (LOG) MARKERS CONTD.

1ST BONE SPRING 9323'M
2ND BONE SPRING 9970'M

Logs were mailed 6/13/18.

33. Circle enclosed attachments:

- | | | | |
|---|--------------------|---------------|-----------------------|
| 1. Electrical/Mechanical Logs (1 full set req'd.) | 2. Geologic Report | 3. DST Report | 4. Directional Survey |
| 5. Sundry Notice for plugging and cement verification | 6. Core Analysis | 7 Other: | |

34. I hereby certify that the foregoing and attached information is complete and correct as determined from all available records (see attached instructions):

Electronic Submission #423806 Verified by the BLM Well Information System.
For OXY USA INCORPORATED, sent to the Carlsbad
Committed to AFMSS for processing by DUNCAN WHITLOCK on 06/18/2018 (18DW0168SE)

Name (please print) DAVID STEWART

Title REGULATORY ADVISOR

Signature (Electronic Submission)

Date 06/13/2018

Title 18 U.S.C. Section 1001 and Title 43 U.S.C. Section 1212, make it a crime for any person knowingly and willfully to make to any department or agency of the United States any false, fictitious or fraudulent statements or representations as to any matter within its jurisdiction.

**** REVISED ** REVISED ** REVISED ** REVISED ** REVISED ** REVISED ** REVISED ** REVISED ****

Additional data for transaction #423806 that would not fit on the form

32. Additional remarks, continued

Log Header, Directional Survey, As-Drilled Amended C-102 plat & WBD are attached.

District I
1623 N. French Dr., Hobbs, NM 88240
Phone: (575) 393-6161 Fax: (575) 393-0720
District II
811 S. First St., Artesia, NM 88210
Phone: (575) 748-1283 Fax: (575) 748-0720
District III
1000 Rio Bravo Road, Aztec, NM 87410
Phone: (505) 334-6178 Fax: (505) 334-6170
District IV
1220 S. St. Francis Dr., Santa Fe, NM 87505
Phone: (505) 476-3460 Fax: (505) 476-3462

State of New Mexico
Energy, Minerals & Natural Resources Department
OIL CONSERVATION DIVISION
1220 South St. Francis Dr.
Santa Fe, NM 87505

RECEIVED
AUG 27 2018
DISTRICT II-ARTESIA O.C.D.

Form C-102
Revised August 1, 2011
Submit one copy to appropriate
District Office

☒ AMENDED REPORT
(As-Drilled)

WELL LOCATION AND ACREAGE DEDICATION PLAT

API Number 30-015-44476	Pool Code 13367	Pool Name COTTON DRAW, BONE SPRING
Property Code 318942	Property Name SUNRISE MDP1 "8-5" FEDERAL COM	Well Number 5H
OGRID No. 16696	Operator Name OXY USA INC.	Elevation 3542.8'

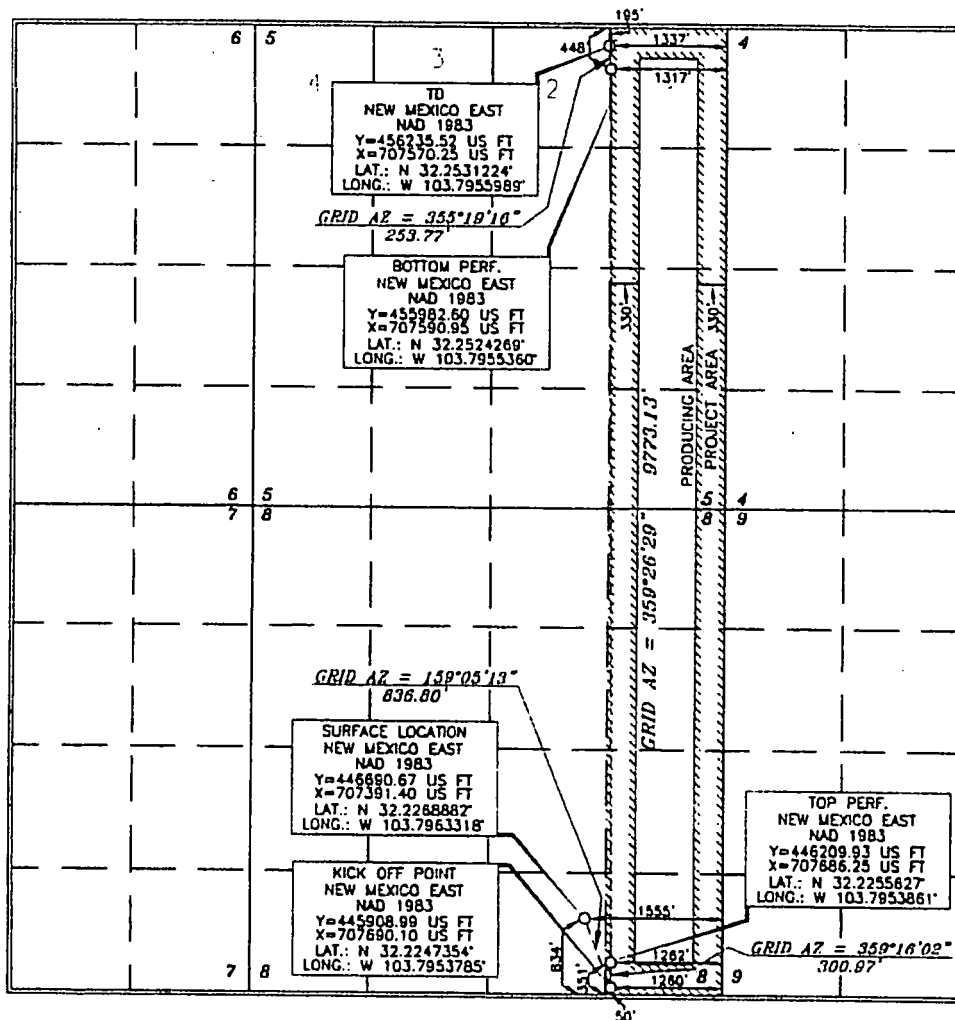
Surface Location

UL or lot no.	Section	Township	Range	Lot 1dn	Feet from the	North/South line	Feet from the	East/West line	County
0	8	24 SOUTH	31 EAST, N.M.P.M.		834'	SOUTH	1555'	EAST	EDDY

Bottom Hole Location If Different From Surface

UL or lot no.	Section	Township	Range	Lot 1dn	Feet from the	North/South line	Feet from the	East/West line	County
2	5	24 SOUTH	31 EAST, N.M.P.M.		195'	NORTH	1337'	EAST	EDDY
Dedicated Acres 320	Joint or Infill Y	Consolidation Code	Order No.	NSL-7557, TP: 351 FSL 1262 FEL BP: 448 FNL 1317 FEL					

No allowable will be assigned to this completion until all interests have been consolidated or a non-standard unit has been approved by the division.



OPERATOR CERTIFICATION

I hereby certify that the information contained herein is true and complete to the best of my knowledge and belief, and that this organization either owns a working interest or undivided mineral interest in the land including the proposed bottom hole location or has a right to drill this well at this location pursuant to a contract with an owner of such a mineral or working interest, or to a voluntary pooling agreement or a compulsory pooling order heretofore entered by the division.

Signature: Sarah Mitchell Date: 3/9/2018
Printed Name: Sarah Mitchell
E-mail Address: sarah_mitchell@oxy.com

SURVEYOR CERTIFICATION

I hereby certify that the well location shown on this plat was plotted from a true and correct survey made by me or under my supervision and that the same is true and correct to the best of my belief.

Date of Survey: SEPTEMBER 29, 2018

Signature and Seal: Terry J. O'Neil
Professional Surveyor

Certificate Number: 15079