

District I
1625 French Dr., Hobbs, NM 88240
Phone: (575) 393-6161 Fax: (575) 393-0720
District II
811 S. First St., Artesia, NM 88210
Phone: (575) 748-1283 Fax: (575) 748-9720
District III
1000 Rio Brazos Road, Aztec, NM 87410
Phone: (505) 334-6178 Fax: (505) 334-6170
District IV
1220 S. St. Francis Dr., Santa Fe, NM 87505
Phone: (505) 476-3460 Fax: (505) 476-3462

State of New Mexico
Energy, Minerals & Natural Resources Department
OIL CONSERVATION DIVISION
1220 South St. Francis Dr.
Santa Fe, NM 87505

NEW MEXICO OIL CONSERVATION
ARTESIA DISTRICT

Form C-102
Revised August 1, 2011
Submit the copy to appropriate
District Office

AUG 07 2018

☐ AMENDED REPORT

RECEIVED

WELL LOCATION AND ACREAGE DEDICATION PLAT

¹ API Number 30-015-10576	² Pool Code 33690	³ Pool Name INDIAN BASIN YESO
⁴ Property Code	⁵ Property Name BOGLE FLATS FEDERAL UNIT 10/9 Y1FE	⁶ Well Number 1H
⁷ GRID NO. 14744	⁸ Operator Name MEWBOURNE OIL COMPANY	⁹ Elevation 4021'

¹⁰ Surface Location

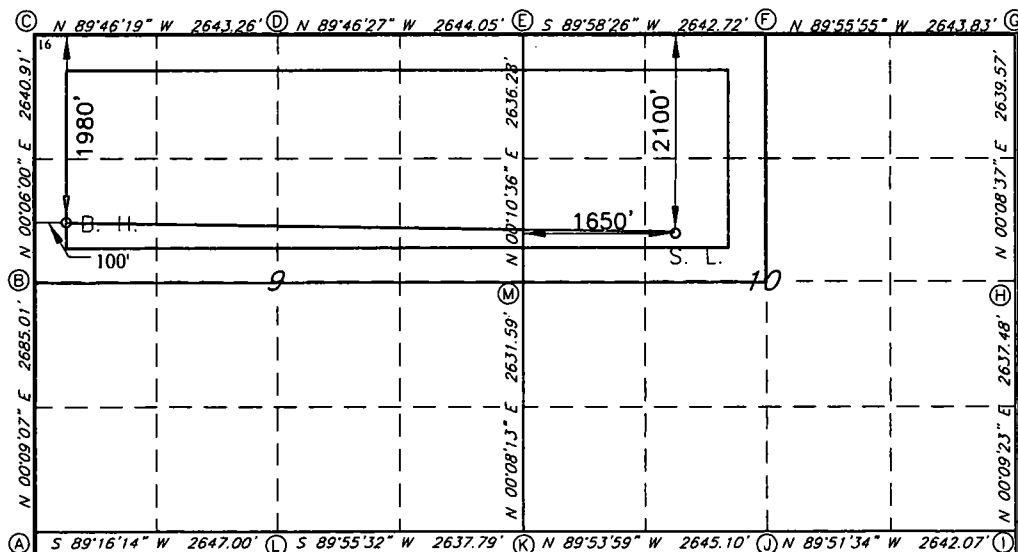
UL or lot no. F	Section 10	Township 22S	Range 23E	Lot Idn	Feet from the 2100	North/South line NORTH	Feet From the 1650	East/West line WEST	County EDDY
---------------------------	----------------------	------------------------	---------------------	---------	------------------------------	----------------------------------	------------------------------	-------------------------------	-----------------------

¹¹ Bottom Hole Location If Different From Surface

UL or lot no. E	Section 9	Township 22S	Range 23E	Lot Idn	Feet from the 1980	North/South line NORTH	Feet from the 100	East/West line WEST	County EDDY
---------------------------	---------------------	------------------------	---------------------	---------	------------------------------	----------------------------------	-----------------------------	-------------------------------	-----------------------

¹² Dedicated Acres 480	¹³ Joint or Infill	¹⁴ Consolidation Code	¹⁵ Order No.
---	-------------------------------	----------------------------------	-------------------------

No allowable will be assigned to this completion until all interest have been consolidated or a non-standard unit has been approved by the division.



¹⁷ OPERATOR CERTIFICATION

I hereby certify that the information contained herein is true and complete to the best of my knowledge and belief, and that this organization either owns a working interest or unleased mineral interest in the land including the proposed bottom hole location or has a right to drill this well at this location pursuant to a contract with an owner of such a mineral or working interest, or to a voluntary pooling agreement or a compulsory pooling order heretofore entered by the division.

7-17-18

Signature
BRADLEY BISHOP
Printed Name
BBISHOP@MEWBOURNE.COM
E-mail Address

¹⁸ SURVEYOR CERTIFICATION

I hereby certify that the well location shown on this plat was plotted from field notes of actual surveys made by me or under my supervision, and that the same is true and correct to the best of my belief.

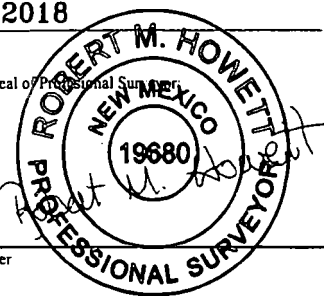
6-25-2018

Date of Survey

Signature and Seal of Professional Surveyor

19680

Certificate Number



RRC - Job No.: LS1806821

RW 8-16-18