

District I  
1625 N. French Dr., Hobbs, NM 88240  
Phone: (575) 393-6161 Fax: (575) 393-0720  
District II  
811 S. First St., Artesia, NM 88210  
Phone: (575) 748-1283 Fax: (575) 748-9720  
District III  
1000 Rio Brazos Road, Aztec, NM 87410  
Phone: (505) 334-6178 Fax: (505) 334-6170  
District IV  
1220 S. St. Francis Dr., Santa Fe, NM 87505  
Phone: (505) 476-3460 Fax: (505) 476-3462

State of New Mexico  
Energy, Minerals & Natural Resources  
Department  
OIL CONSERVATION DIVISION  
1220 South St. Francis Dr.  
Santa Fe, NM 87505

NEW MEXICO OIL CONSERVATION  
ARTESIA DISTRICT

FORM C-102  
Revised August 1, 2011  
Submit one copy to appropriate  
District Office

SEP 20 2018

AMENDED REPORT

RECEIVED

WELL LOCATION AND ACREAGE DEDICATION PLAT

<sup>1</sup> API Number 30-015- 45263	<sup>2</sup> Pool Code 98220	<sup>3</sup> Pool Name Purple Sage; WOLFCAMP
<sup>4</sup> Property Code 322450	<sup>5</sup> Property Name CYPRESS 34 23S29E3434	<sup>6</sup> Well Number #244H
<sup>7</sup> OGRID No. 372043	<sup>8</sup> Operator Name TAP ROCK OPERATING, LLC.	<sup>9</sup> Elevation 3093'

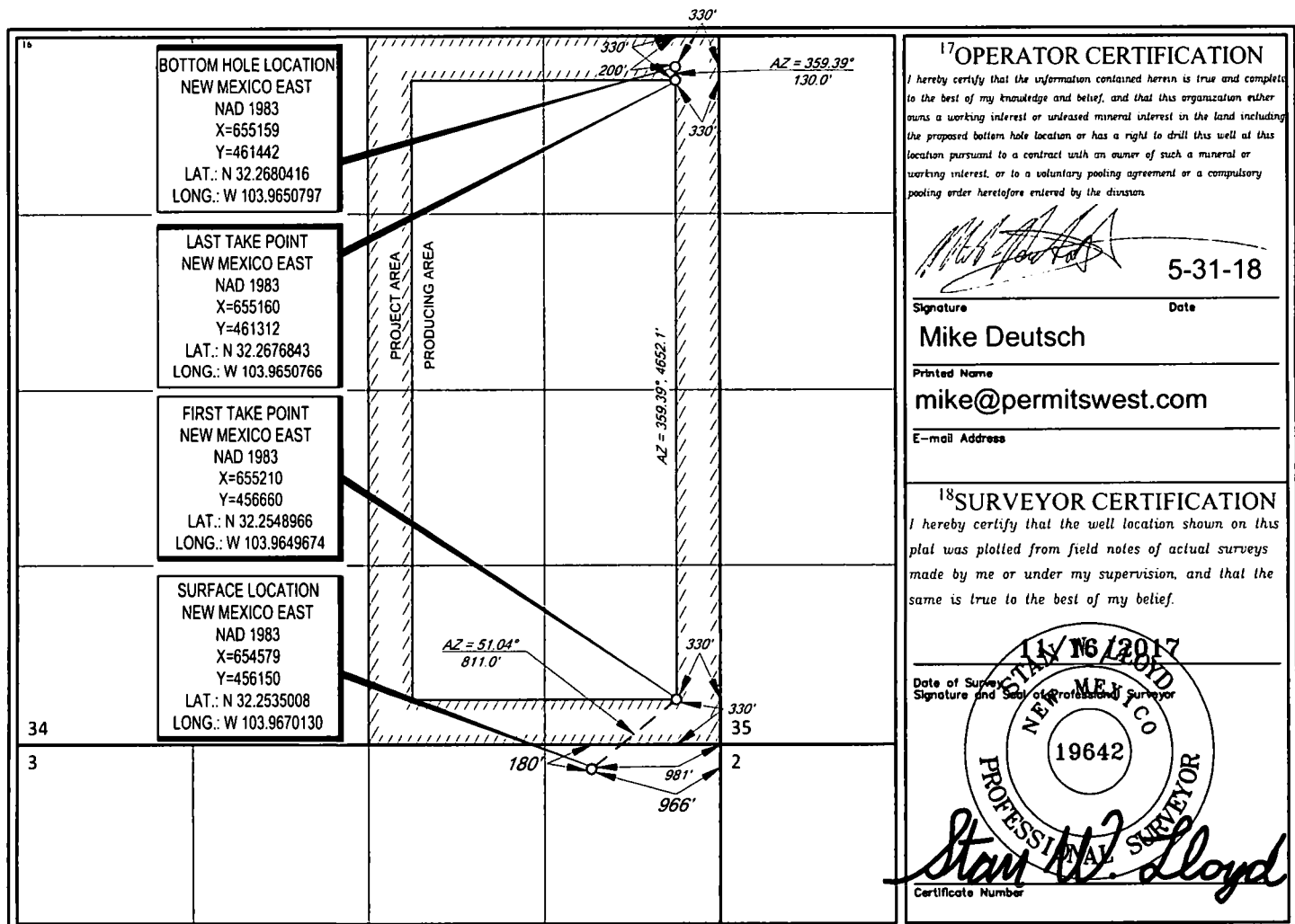
<sup>10</sup>Surface Location

UL or lot no.	Section	Township	Range	Lot Idn	Feet from the	North/South line	Feet from the	East/West line	County
A	3	24-S	29-E	1-	180'	NORTH	966'	EAST	EDDY

UL or lot no.	Section	Township	Range	Lot Idn	Feet from the	North/South line	Feet from the	East/West line	County
A	34	23-S	29-E	-	200'	NORTH	330'	EAST	EDDY

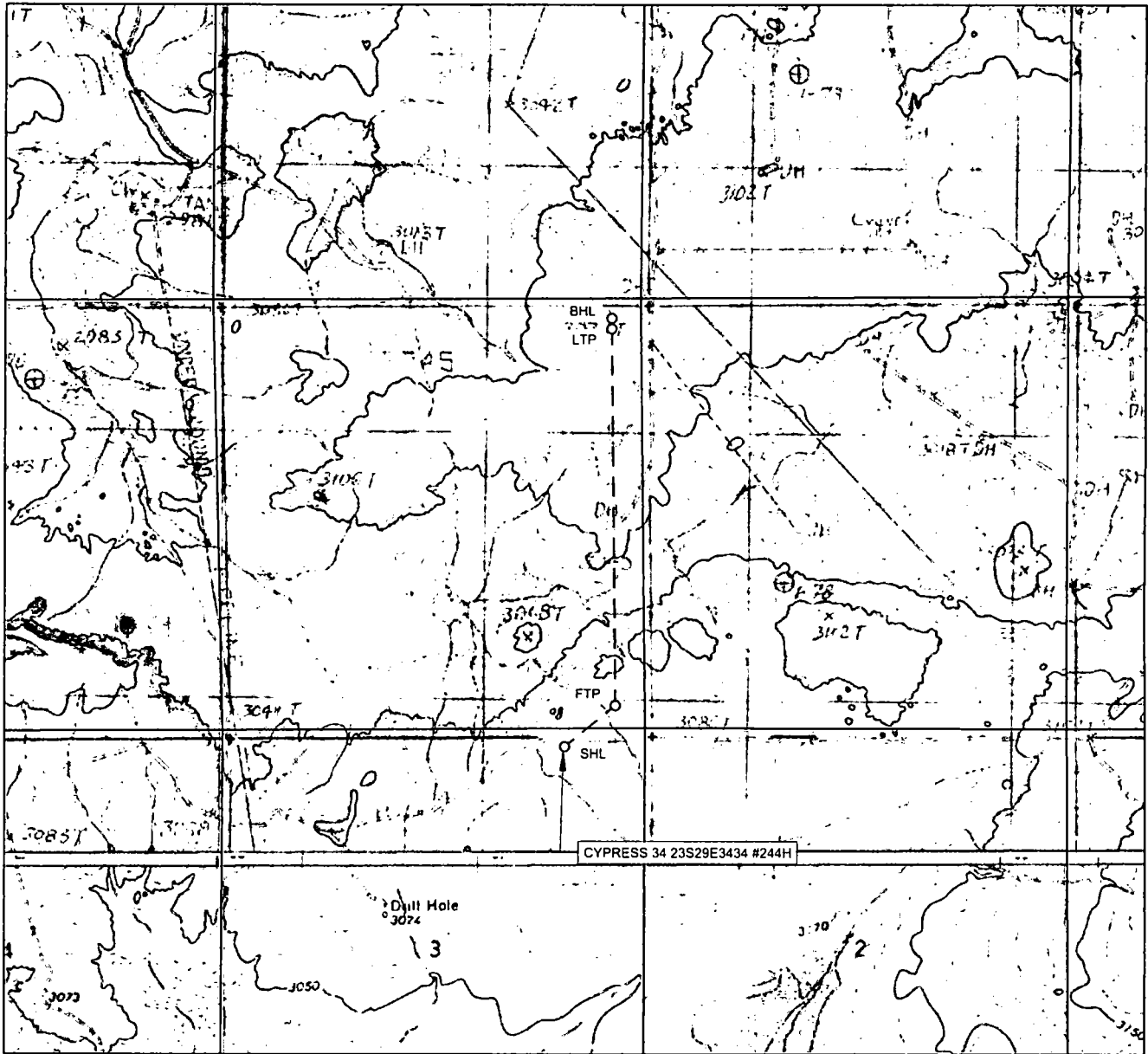
<sup>11</sup> Dedicated Acres 320	<sup>13</sup> Joint or Infill	<sup>14</sup> Consolidation Code	<sup>15</sup> Order No. 2A
--------------------------------------	-------------------------------	----------------------------------	-------------------------------

No allowable will be assigned to this completion until all interests have been consolidated or a non-standard unit has been approved by the division.



RwP- 9-21-18

# LOCATION & ELEVATION VERIFICATION MAP



LEASE NAME & WELL NO.: CYPRESS 34 23S29E3434 #244H

SECTION 3 TWP 24-S RGE 29-E SURVEY N.M.P.M.  
 COUNTY EDDY STATE NM ELEVATION 3093'  
 DESCRIPTION 180' FNL & 966' FEL

LATITUDE N 32.2535008 LONGITUDE W 103.9670130



SCALE: 1" = 2000'  
 0' 1000' 2000'

THIS EASEMENT/SERVITUDE LOCATION SHOWN HEREON HAS BEEN SURVEYED ON THE GROUND UNDER MY SUPERVISION AND PREPARED ACCORDING TO THE EVIDENCE FOUND AT THE TIME OF SURVEY, AND DATA PROVIDED BY TAP ROCK OPERATING, LLC. THIS CERTIFICATION IS MADE AND LIMITED TO THOSE PERSONS OR ENTITIES SHOWN ON THE FACE OF THIS PLAT AND IS NON-TRANSFERABLE. THIS SURVEY IS CERTIFIED FOR THIS TRANSACTION ONLY.

ALL BEARINGS, DISTANCES, AND COORDINATE VALUES CONTAINED HEREON ARE GRID BASED UPON THE NEW MEXICO STATE PLANE COORDINATE SYSTEM, EAST ZONE OF THE NORTH AMERICAN DATUM 1983, U.S. SURVEY FEET.



**TOPOGRAPHIC**  
 LOYALTY INNOVATION LEGACY

1400 EVERMAN PARKWAY, Ste. 197 • FT. WORTH, TEXAS 76140  
 TELEPHONE: (817) 744-7512 • FAX (817) 744-7548  
 2903 NORTH BIG SPRING • MIDLAND, TEXAS 79705  
 TELEPHONE: (432) 682-1653 OR (800) 767-1653 • FAX (432) 682-1743  
 WWW.TOPOGRAPHIC.COM