

NM OIL CONSERVATION

ARTESIA DISTRICT

Form C-102

District I
1625 N. French Dr., Hobbs, NM 88240
Phone: (575) 393-6161 Fax: (575) 393-0720
District II
811 S. First St., Artesia, NM 88210
Phone: (575) 748-1283 Fax: (575) 748-9720
District III
1000 Rio Brazos Road, Aztec, NM 87410
Phone: (505) 334-6178 Fax: (505) 334-6170
District IV
1220 S. St. Francis Dr., Santa Fe, NM 87505
Phone: (505) 476-3460 Fax: (505) 476-3462

State of New Mexico
Energy, Minerals & Natural Resources Department
OIL CONSERVATION DIVISION
1220 South St. Francis Dr.
Santa Fe, NM 87505

FEB 26 2018

Revised August 1, 2011
Submit one copy to appropriate
District Office

RECEIVED

☐ AMENDED REPORT

WELL LOCATION AND ACREAGE DEDICATION PLAT

¹ API Number 30-015-42169	² Pool Code 30215	³ Pool Name Hay Hollow; Bone Spring
⁴ Property Code 40444	⁵ Property Name HORNSBY 35 FEDERAL COM	⁶ Well Number 8H
⁷ OGRID No. 215099	⁸ Operator Name CIMAREX ENERGY CO.	⁹ Elevation 3240.3'

Surface Location

UL or lot no.	Section	Township	Range	Lot Idn	Feet from the	North/South line	Feet from the	East/West line	County
2	35	26S	27E		290	SOUTH	2030	EAST	EDDY

Bottom Hole Location If Different From Surface

UL or lot no.	Section	Township	Range	Lot Idn	Feet from the	North/South line	Feet from the	East/West line	County
B	26	26S	27E		330	NORTH	1699	EAST	EDDY
¹² Dedicated Acres 224.21	¹³ Joint or Infill	¹⁴ Consolidation Code	¹⁵ Order No.						

No allowable will be assigned to this completion until all interests have been consolidated or a non-standard unit has been approved by the division.

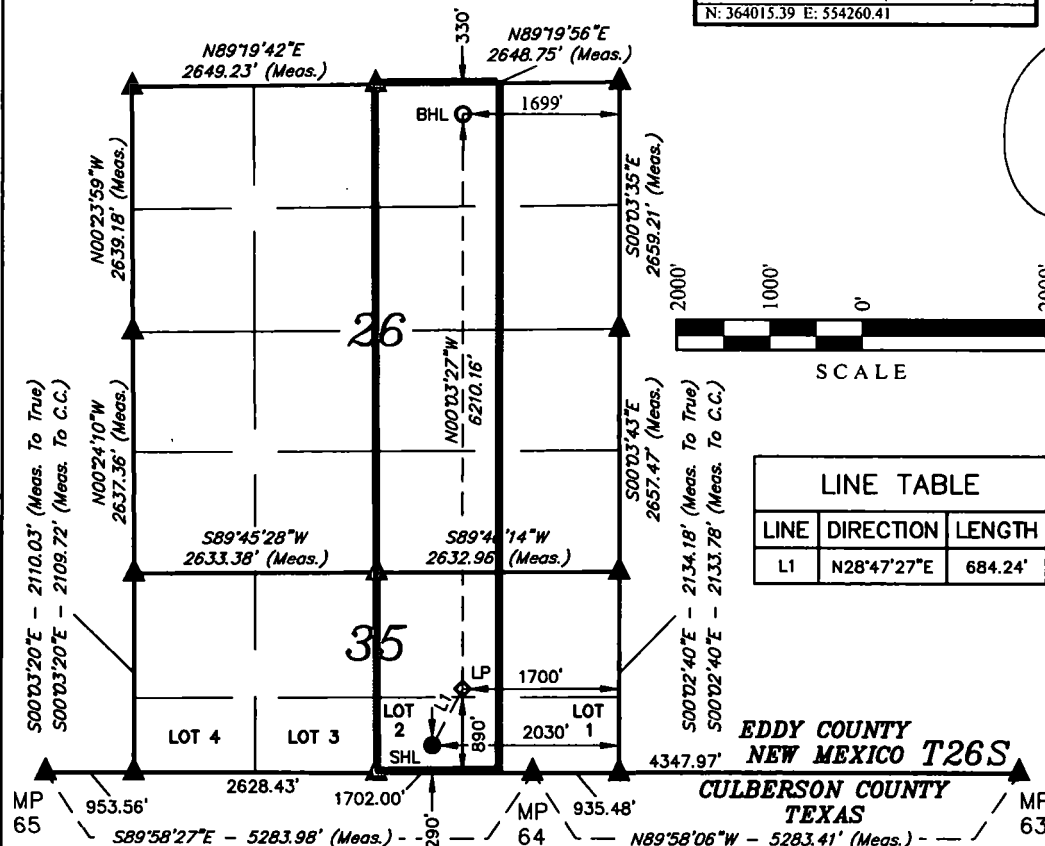
- = SURFACE HOLE LOCATION
- ◆ = LANDING POINT
- = BOTTOM HOLE LOCATION
- ▲ = SECTION CORNER LOCATED

NOTE:

Distances referenced on plat to section lines are perpendicular.

NAD 83 (SURFACE HOLE LOCATION)
LATITUDE = 32°00'02.86" (32.000794)
LONGITUDE = 104°09'31.63" (104.158786)
NAD 27 (SURFACE HOLE LOCATION)
LATITUDE = 32°00'02.42" (32.000672)
LONGITUDE = 104°09'29.86" (104.158294)
STATE PLANE NAD 83 (N.M. EAST)
N: 364072.13 E: 595444.86
STATE PLANE NAD 27 (N.M. EAST)
N: 364015.39 E: 554260.41

REV: 1 10-28-16 D.P. (BHL MOVE)



OPERATOR CERTIFICATION

I hereby certify that the information contained herein is true and complete to the best of my knowledge and belief, and that this organization either owns a working interest or unleased mineral interest in the land including the proposed bottom hole location or has a right to drill this well at this location pursuant to a contract with an owner of such a mineral or working interest, or to a voluntary pooling agreement or a compulsory pooling order heretofore entered by the division.

Signature: *Terri Stathem* Date: 2/22/18

Printed Name: Terri Stathem

E-mail Address: tstathem@cimarex.com

SURVEYOR CERTIFICATION

I hereby certify that the well location shown on this plat was plotted from field notes of actual surveys made by me or under my supervision, and that the same is true and correct to the best of my belief.

October 5, 2015

Date of Survey
Signature and Seal of Professional Surveyor:



Certificate Number: