

JAN 03 2019

RECEIVED

Form C-102

Revised August 1, 2011

Submit one copy to appropriate  
District Office

District I  
1625 N. French Dr., Hobbs, NM 88240  
Phone: (575) 393-6161 Fax: (575) 393-0720  
District II  
811 S. First St., Artesia, NM 88210  
Phone: (575) 748-1283 Fax: (575) 748-8720  
District III  
1000 Rio Brazos Road, Aztec, NM 87410  
Phone: (505) 334-6178 Fax: (505) 334-6170  
District IV  
1220 S. St. Francis Dr., Santa Fe, NM 87505  
Phone: (505) 476-3460 Fax: (505) 476-3462

State of New Mexico  
Energy, Minerals & Natural Resources Department  
OIL CONSERVATION DIVISION  
1220 South St. Francis Dr.  
Santa Fe, NM 87505

☒ AMENDED REPORT

As-Drilled

WELL LOCATION AND ACREAGE DEDICATION PLAT

|                            |  |                                   |
|----------------------------|--|-----------------------------------|
| API Number<br>30-015-44644 | Pool Code<br>98220                                 | Pool Name<br>Purple Sage Wolfcamp |
| Property Code<br>320631    | Property Name<br>CORRAL CANYON "36-25" FEDERAL COM | Well Number<br>34H                |
| OGRID No.<br>16696         | Operator Name<br>OXY USA INC.                      | Elevation<br>3132.2'              |

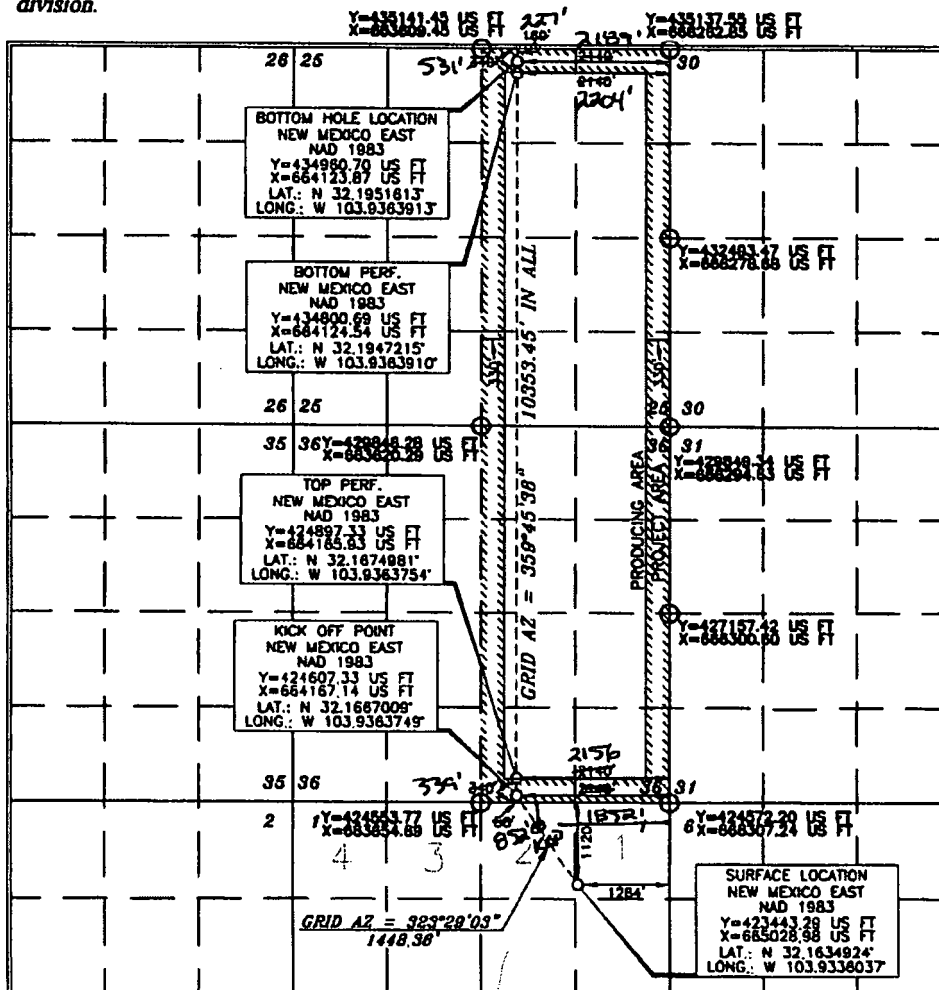
Surface Location

| UL or lot no. | Section | Township | Range             | Lot Idn | Feet from the | North/South line | Feet from the | East/West line | County |
|---------------|---------|----------|-------------------|---------|---------------|------------------|---------------|----------------|--------|
| 1             | 1       | 25 SOUTH | 29 EAST, N.M.P.M. |         | 1120'         | NORTH            | 1284'         | EAST           | EDDY   |

Bottom Hole Location If Different From Surface

| UL or lot no.          | Section              | Township           | Range             | Lot Idn  | Feet from the | North/South line | Feet from the | East/West line | County |
|------------------------|----------------------|--------------------|-------------------|--|---------------|------------------|---------------|----------------|--------|
| B                      | 25                   | 24 SOUTH           | 29 EAST, N.M.P.M. |  | 100'          | NORTH            | 2109'         | EAST           | EDDY   |
| Dedicated Acres<br>640 | Joint or Infill<br>Y | Consolidation Code | Order No.         | FTP-339 FSL 2156 FEL - Sec 36<br>LTP-531 FNL 2204 FEL - Sec 25 |               |                  |               |                |        |

No allowable will be assigned to this completion until all interests have been consolidated or a non-standard unit has been approved by the division.



OPERATOR CERTIFICATION

I hereby certify that the information contained herein is true and complete to the best of my knowledge and belief, and that this organization either owns a working interest or undivided mineral interest in the land including the proposed bottom hole location or has a right to drill this well at this location pursuant to a contract with an owner of such a mineral or working interest, or to a voluntary pooling agreement or a compulsory pooling order heretofore entered by the division.

Signature: *David Stewart* Date: 11/3/19

Printed Name: David Stewart  
E-mail Address: david\_stewart@oxy.com

SURVEYOR CERTIFICATION

I hereby certify that the well location shown on this plat was placed in the field under my supervision and that the same is true and correct to the best of my belief.

Signature: *ERRY J. AS...* Date of Survey: AUGUST 11, 2017

Professional Land Surveyor  
Certificate Number: 15079

*ERRY J. AS...* 9/4/2017  
Certificate Number: 15079