

District I  
1625 N. French Dr., Hobbs, NM 88240  
Phone: (575) 393-6161 Fax: (575) 393-0720  
District II  
811 S. First St., Artesia, NM 88210  
Phone: (575) 748-1283 Fax: (575) 748-9720  
District III  
1000 Rio Brazos Road, Aztec, NM 87410  
Phone: (505) 334-6178 Fax: (505) 334-6170  
District IV  
1220 S. St. Francis Dr., Santa Fe, NM 87505  
Phone: (505) 476-3460 Fax: (505) 476-3462

State of New Mexico  
Energy, Minerals & Natural Resources Department  
OIL CONSERVATION DIVISION  
1220 South St. Francis Dr.  
Santa Fe, NM 87505

Form C-102  
Revised August 1, 2011  
Submit one copy to appropriate  
District Office

AMENDED REPORT

WELL LOCATION AND ACREAGE DEDICATION PLAT

<sup>1</sup> API Number <b>30-015-48655</b>	<sup>1</sup> Pool Code 97860	<sup>1</sup> Pool Name Jennings; Bone Spring, West
<sup>4</sup> Property Code 319562	<sup>3</sup> Property Name LUSITANO 27-34 FED COM	
<sup>1</sup> OGRID No. 6137	<sup>5</sup> Operator Name DEVON ENERGY PRODUCTION COMPANY, L.P.	
		<sup>6</sup> Well Number 523H
		<sup>7</sup> Elevation 3332.6

<sup>8</sup> Surface Location

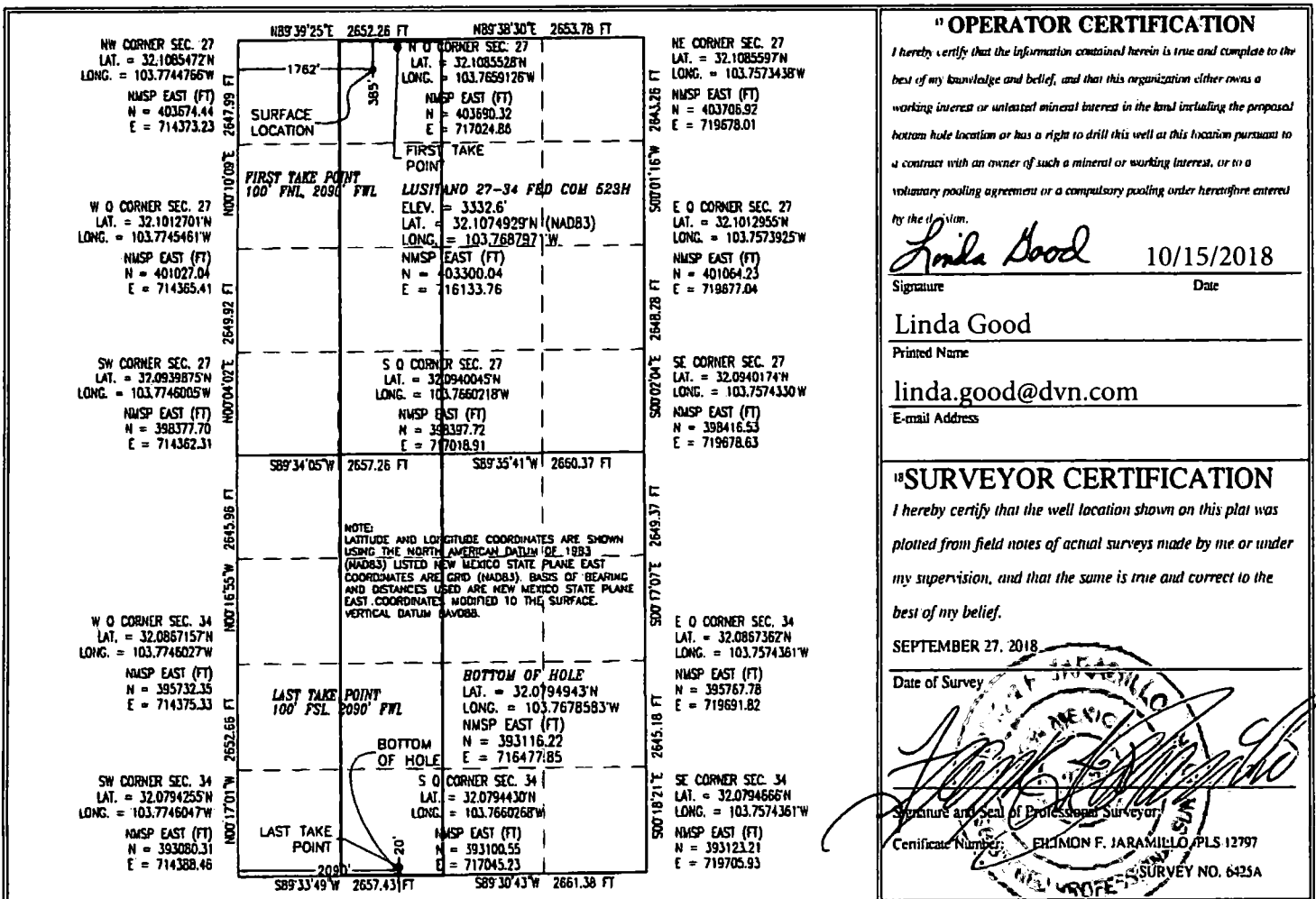
UL or lot no.	Section	Township	Range	Lot Idn	Feet from the	North/South line	Feet from the	East/West line	County
C	27	25 S	31 E		385	NORTH	1762	WEST	EDDY

<sup>11</sup> Bottom Hole Location If Different From Surface

UL or lot no.	Section	Township	Range	Lot Idn	Feet from the	North/South line	Feet from the	East/West line	County
N	34	25 S	31 E		20	SOUTH	2090	WEST	EDDY

<sup>12</sup> Dedicated Acres 320	<sup>13</sup> Joint or Infill	<sup>14</sup> Consolidation Code	<sup>15</sup> Order No.
--------------------------------------	-------------------------------	----------------------------------	-------------------------

No allowable will be assigned to this completion until all interests have been consolidated or a non-standard unit has been approved by the division.



RWPI-25-19

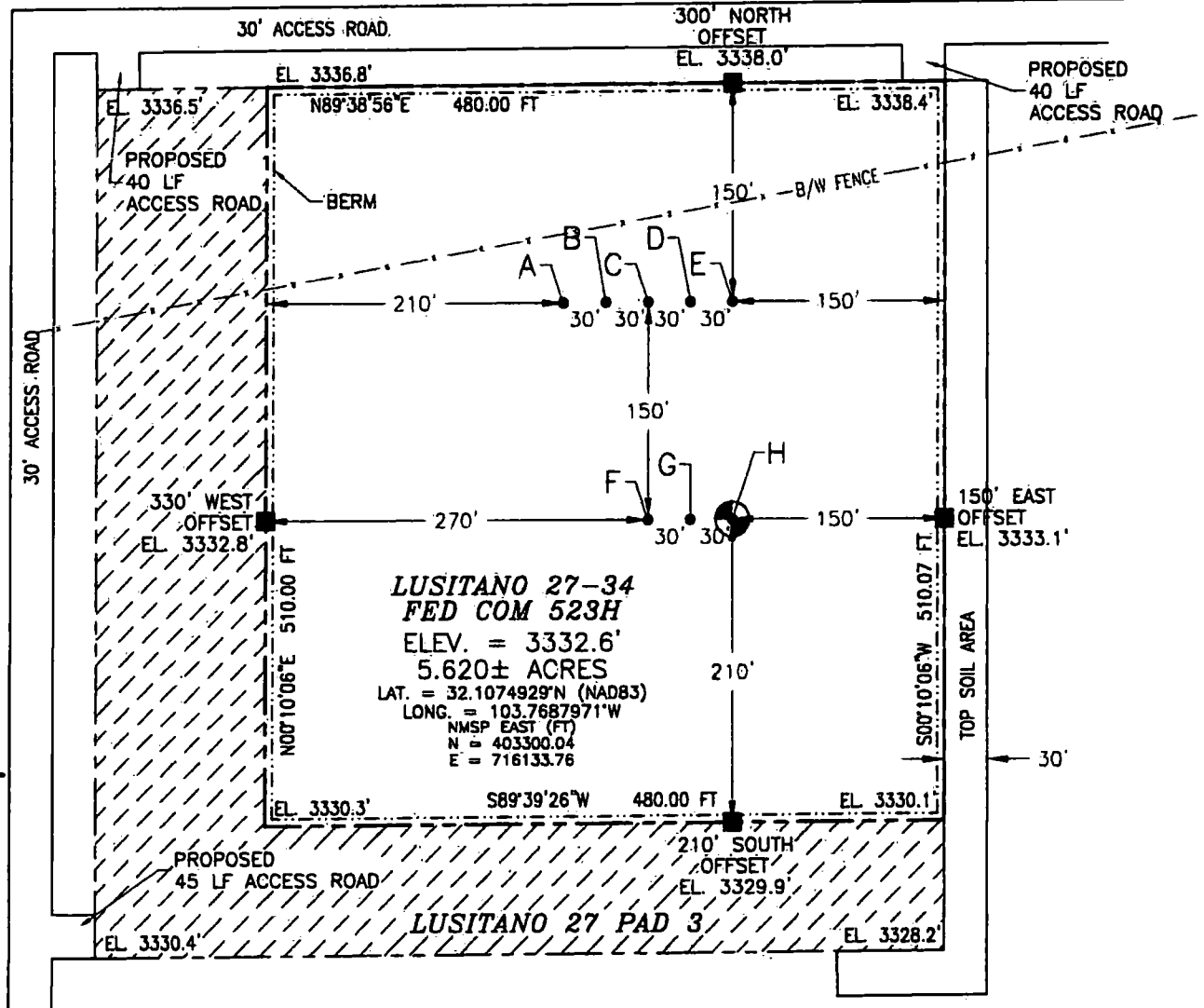
**SECTION 27, TOWNSHIP 25 SOUTH, RANGE 31 EAST, N.M.P.M.  
EDDY COUNTY, STATE OF NEW MEXICO  
SITE MAP**

NOTE: LATITUDE AND LONGITUDE COORDINATES ARE SHOWN USING THE NORTH AMERICAN DATUM OF 1983 (NAD83) LISTED NEW MEXICO STATE PLANE EAST COORDINATES ARE GRID (NAD83). BASIS OF BEARING AND DISTANCES USED ARE NEW MEXICO STATE PLANE EAST COORDINATES MODIFIED TO THE SURFACE. VERTICAL DATUM NAVD83.

- |                                 |                                 |
|---------------------------------|---------------------------------|
| A - LUSITANO 27-22 FED COM 232H | F - LUSITANO 27-34 FED COM 233H |
| B - LUSITANO 27-34 FED COM 733H | G - LUSITANO 27-34 FED COM 533H |
| C - LUSITANO 27-34 FED COM 622H | H - LUSITANO 27-34 FED COM 523H |
| D - LUSITANO 27-34 FED COM 333H |                                 |
| E - LUSITANO 27-34 FED COM 713H |                                 |

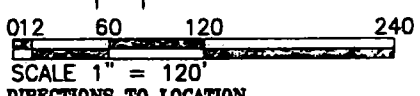
SEC. 22  
SEC. 27

SURVEYED ELEC. LINE



**LUSITANO 27-34  
FED COM 523H  
ELEV. = 3332.6'  
5.620± ACRES  
LAT. = 32.1074929°N (NAD83)  
LONG. = 103.7687971°W  
NMSP EAST (FT)  
N = 403300.04  
E = 716133.76**

**LUSITANO 27 PAD 3**



**DIRECTIONS TO LOCATION**  
FROM STATE HIGHWAY 12B AND CR 1 (ORLA HIGHWAY) GO SOUTH ON CR 1 6.5 MILES TO MONSANTO ROAD, TURN RIGHT GO WEST 2.1 MILES, TURN RIGHT GO NORTH 0.8 OF A MILE, TURN LEFT GO WEST 2.1 MILES, BEND LEFT GO SOUTHWEST 1.3 MILES, TURN LEFT GO SOUTH 1.0 MILE TO BEGIN ROAD SURVEY, GO WEST 3437' (0.65 MILE), THEN SOUTH 40' TO THE NORTHEAST PAD CORNER FOR THIS LOCATION.

**DEVON ENERGY PRODUCTION COMPANY, L.P.  
LUSITANO 27-34 FED COM 523H  
LOCATED 385 FT. FROM THE NORTH LINE  
AND 1762 FT. FROM THE WEST LINE OF  
SECTION 27, TOWNSHIP 25 SOUTH,  
RANGE 31 EAST, N.M.P.M.  
EDDY COUNTY, STATE OF NEW MEXICO  
LAND STATUS: BLM**

SEPTEMBER 27, 2018  
SURVEY NO. 6425A