

State of New Mexico
Energy, Minerals & Natural Resources Department
OIL CONSERVATION DIVISION

Form C-102
Revised August 1, 2011
Submit one copy to appropriate
District Office

☐ AMENDED REPORT

RECEIVED

¹ API Number 30-015-45708		² Pool Code 98220	³ Pool Name Purple Sage Wolfcamp (gas)	
⁴ Property Code 317791		⁵ Property Name DAVINCI 7-18 FEDERAL <i>Com</i>		⁶ Well Number 33H
⁷ OGRID No. 215099		⁸ Operator Name CIMAREX ENERGY CO.		⁹ Elevation 3307.3'

UL or lot no. B	Section 7	Township 25S	Range 27E	Lot 1dn	Feet from the 330	North/South line NORTH	Feet from the 1510	East/West line EAST	County EDDY
--------------------	--------------	-----------------	--------------	---------	----------------------	---------------------------	-----------------------	------------------------	----------------

UL or lot no. O	Section 18	Township 25S	Range 27E	Lot Idn	Feet from the 330	North/South line SOUTH	Feet from the 2006	East/West line EAST	County EDDY
¹² Dedicated Acres 640		¹³ Joint or Infill		¹⁴ Consolidation Code		¹⁵ Order No.			

¹⁶ NOTE:

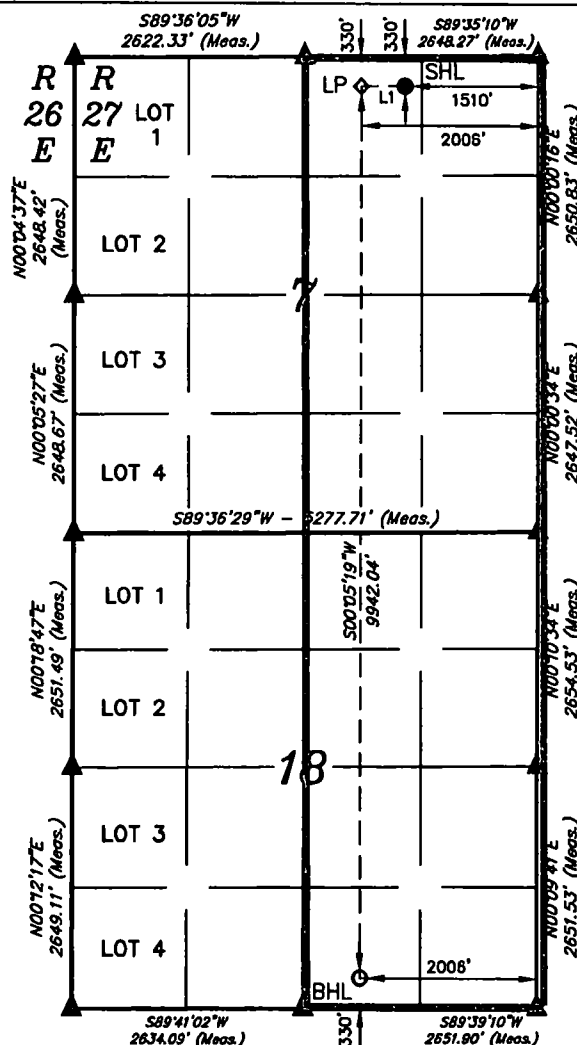
- | |
|---|
| NAD 83 (SURFACE HOLE LOCATION) |
| LATITUDE = 32°09'03.39" (32.150942) |
| LONGITUDE = 104°13'33.01" (104.225836) |
| NAD 27 (SURFACE HOLE LOCATION) |
| LATITUDE = 32°09'02.96" (32.150822) |
| LONGITUDE = 104°13'31.22" (104.225339) |
| STATE PLANE NAD 83 (N.M. EAST) |
| N: 418664.49 E: 574605.74 |
| STATE PLANE NAD 27 (N.M. EAST) |
| N: 418606.97 E: 533422.76 |

- | | |
|---------------------------------------|-------------------------------------|
| NAD 83 (BOTTOM HOLE LOCATION) | |
| LATITUDE | = 32°07'24.97" (32.123603) |
| LONGITUDE | = 104°13'38.58" (104.227383) |
| NAD 27 (BOTTOM HOLE LOCATION) | |
| LATITUDE | = 32°07'24.54" (32.123483) |
| LONGITUDE | = 104°13'36.79" (104.226886) |
| STATE PLANE NAD 83 (N.M. EAST) | |
| N: | 408719.16 E: 574136.49 |
| STATE PLANE NAD 27 (N.M. EAST) | |
| N: | 408661.83 E: 573953.36 |

LINE TABLE		
LINE	DIRECTION	LENGTH
L1	S89°35'06"W	495.57'



● = SURFACE HOLE LOCATION
 ○ = BOTTOM HOLE LOCATION
 ▲ = SECTION CORNER LOCATED
 ◇ = LANDING POINT



I hereby certify that the information contained herein is true and complete to the best of my knowledge and belief, and that this organization either owns a working interest or unleased mineral interest in the land including the proposed bottom hole location or has a right to drill this well at this location pursuant to a contract with an owner of such a mineral or working interest, or to a voluntary pooling agreement or a compulsory pooling order previously entered by the Division.

Signature 3/16/18
Date

Aricka Easterling

Printed Name _____

aeasterling@cimarex.com
E-mail Address

I hereby certify that the well location shown on this plat was plotted from field notes of actual surveys made by me or under my supervision, and that the same is true and correct to the best of my belief.

May 11, 2017

Date of Survey _____
Signature and Seal of Professional Surveyor: _____



Certificate Number:

RWP 2-12-19

Operator Name: CIMAREX ENERGY COMPANY

Well Name: DAVINCI 7-18 FEDERAL COM

Well Number: 33H

	NS-Foot	NS Indicator	EW-Foot	EW Indicator	Twsp	Range	Section	Aliquot/Lot/Tract	Latitude	Longitude	County	State	Meridian	Lease Type	Lease Number	Elevation	MD	TVD
EXIT Leg #1	0	FNL	200 6	FEL	25S	27E	18	Aliquot NWNE	32.13727 2	- 104.2274 08	EDD Y	NEW MEXI CO	NEW MEXI CO	F	NMNM 111530	- 625 1	141 00	955 8
BHL Leg #1	330	FSL	200 6	FEL	25S	27E	18	Aliquot SWSE	32.12360 3	- 104.2273 83	EDD Y	NEW MEXI CO	NEW MEXI CO	F	NMNM 111530	- 630 6	190 73	961 3