

FEB 22 2019

Form C-102

Revised August 1, 2011

Submit one copy to appropriate

District Office

☒ AMENDED REPORT

District I  
1625 N. French Dr., Hobbs, NM 88240  
Phone: (575) 393-6161 Fax: (575) 393-0720

District II  
811 S. First St., Artesia, NM 88210  
Phone: (575) 748-1283 Fax: (575) 748-9720

District III  
1000 Rio Brazos Road, Aztec, NM 87410  
Phone: (505) 334-6178 Fax: (505) 334-6170

District IV  
1220 S. St. Francis Dr., Santa Fe, NM 87505  
Phone: (505) 476-3460 Fax: (505) 476-3462

State of New Mexico  
Energy, Minerals & Natural Resources Department  
OIL CONSERVATION DIVISION  
1220 South St. Francis Dr.  
Santa Fe, NM 87505

## WELL LOCATION AND ACREAGE DEDICATION PLAT

As Drilled

<sup>1</sup> API Number 30-015-45021	<sup>2</sup> Pool Code 98220	<sup>3</sup> Pool Name Purple Sage; Wolfcamp (Gas)
<sup>4</sup> Property Code 321482	<sup>5</sup> Property Name RIVERBEND 12-13 FEDERAL COM	<sup>6</sup> Well Number 29H
<sup>7</sup> OGRID No. 215099	<sup>8</sup> Operator Name CIMAREX ENERGY CO.	<sup>9</sup> Elevation 2937.2

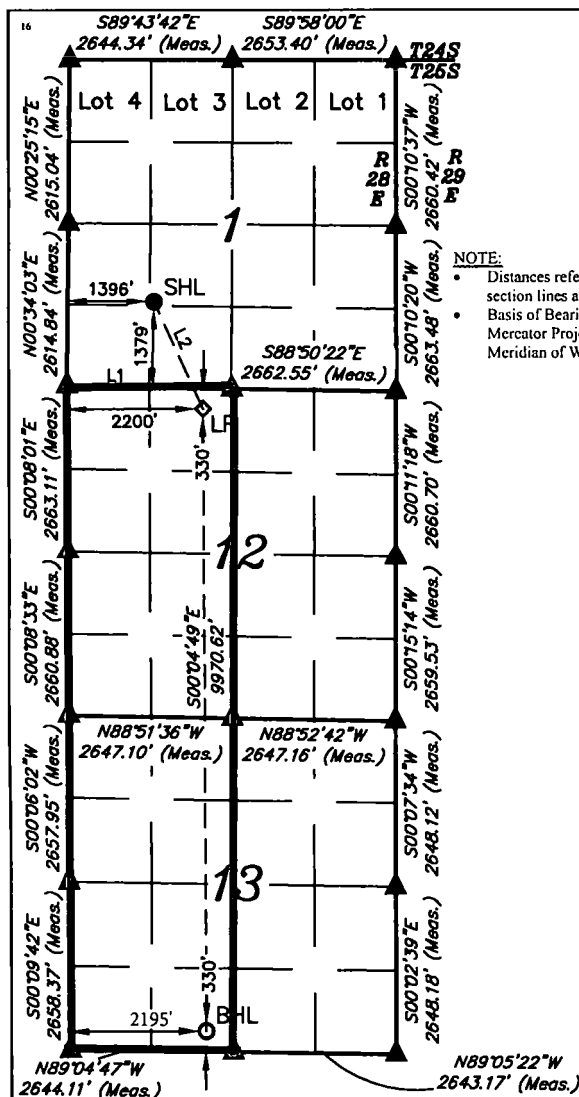
## " Surface Location

UL or lot no.	Section	Township	Range	Lot Idn	Feet from the	North/South line	Feet from the	East/West line	County
K	I	25S	28E		1379	SOUTH	1396	WEST	EDDY

## " Bottom Hole Location If Different From Surface

UL or lot no.	Section	Township	Range	Lot Idn	Feet from the	North/South line	Feet from the	East/West line	County
N	13	25S	28E		330	SOUTH	2195	WEST	EDDY
<sup>12</sup> Dedicated Acres 640	<sup>13</sup> Joint or Infill	<sup>14</sup> Consolidation Code	<sup>15</sup> Order No.						

No allowable will be assigned to this completion until all interests have been consolidated or a non-standard unit has been approved by the division.



## NOTE:

- Distances referenced on plat to section lines are perpendicular.
- Basis of Bearing is a Transverse Mercator Projection with a Central Meridian of W103°53'00"

- = SURFACE HOLE LOCATION
- ◇ = LANDING POINT
- = BOTTOM HOLE LOCATION
- ▲ = SECTION CORNER LOCATED

NAD 83 (SURFACE HOLE LOCATION)	
LATITUDE = 32°09'21.01" (32.155835)	
LONGITUDE = 104°02'41.78" (104.044939)	
NAD 27 (SURFACE HOLE LOCATION)	
LATITUDE = 32°09'20.56" (32.155712)	
LONGITUDE = 104°02'40.02" (104.044450)	
STATE PLANE NAD 83 (N.M. EAST)	
N: 420547.64 E: 630584.99	
STATE PLANE NAD 27 (N.M. EAST)	
N: 420489.37 E: 589400.83	

## " OPERATOR CERTIFICATION

I hereby certify that the information contained herein is true and complete to the best of my knowledge and belief, and that this organization either owns a working interest or unleased mineral interest in the land including the proposed bottom hole location or has a right to drill this well at this location pursuant to a contract with an owner of such a mineral or working interest, or to a voluntary pooling agreement or a compulsory pooling order heretofore entered by the division.

Signature: *Fatima Vasquez* Date: 2/7/2019

Fatima Vasquez

Printed Name

fvasquez@cimarex.com

E-mail Address

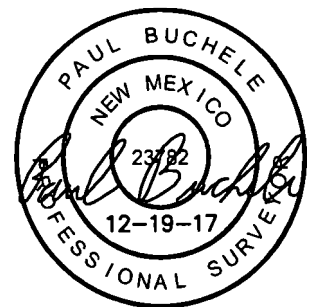
## " SURVEYOR CERTIFICATION

I hereby certify that the well location shown on this plat was plotted from field notes of actual surveys made by me or under my supervision, and that the same is true and correct to the best of my belief.

December 12, 2017

Date of Survey

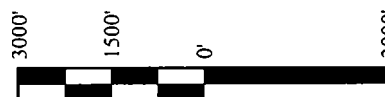
Signature and Seal of Professional Surveyor:



Certificate Number:

## LINE TABLE

LINE	DIRECTION	LENGTH
L1	S88°49'54"E	2665.14'
L2	S24°37'55"E	1897.82'



SCALE

DRAWN BY: C.D. 03-28-17

REV: 2 12-18-17 C.D. (SHL CHANGE)