

District I  
1625 N. French Dr., Hobbs, NM 88240  
Phone: (575) 393-6161 Fax: (575) 393-0720  
District II  
811 S. First St., Artesia, NM 88210  
Phone: (575) 748-1283 Fax: (575) 748-9720  
District III  
1000 Rio Brazos Road, Aztec, NM 87410  
Phone: (505) 334-6178 Fax: (505) 334-6170  
District IV  
1220 S. St. Francis Dr., Santa Fe, NM 87505  
Phone: (505) 476-3460 Fax: (505) 476-3462

State of New Mexico  
Energy, Minerals & Natural Resources Department  
OIL CONSERVATION DIVISION  
1220 South St. Francis Dr.  
Santa Fe, NM 87505

Form C-102  
Revised August 1, 2011  
Submit one copy to appropriate  
District Office

RECEIVED  
MAY 01 2019

AMENDED REPORT

DISTRICT II-ARTESIA O.G.D.

WELL LOCATION AND ACREAGE DEDICATION PLAT AS-DRILLED PLAT

<sup>1</sup> API Number 03-015- 44400	<sup>2</sup> Pool Code 98241	<sup>3</sup> Pool Name WC-015 G-05 S233013K; WOLFCAMP
<sup>4</sup> Property Code 318385	<sup>5</sup> Property Name REMUDA NORTH 30 STATE	
<sup>7</sup> OGRID No. 005380	<sup>8</sup> Operator Name XTO ENERGY, INC.	<sup>6</sup> Well Number 111H
		<sup>9</sup> Elevation 3,090'

<sup>10</sup> Surface Location

UL or lot no.	Section	Township	Range	Lot Idn	Feet from the	North/South line	Feet from the	East/West line	County
L3	30	23 S	30 E		2,280'	SOUTH	587'	WEST	EDDY

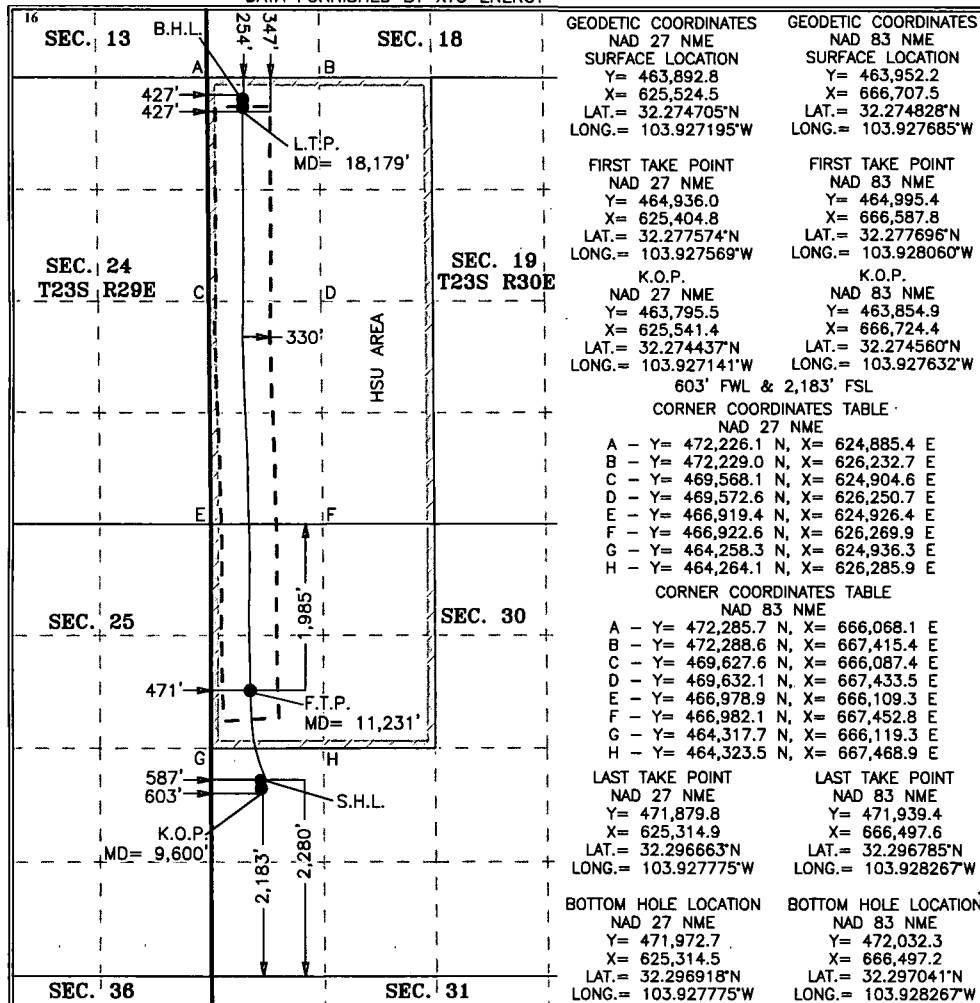
<sup>11</sup> Bottom Hole Location If Different From Surface

UL or lot no.	Section	Township	Range	Lot Idn	Feet from the	North/South line	Feet from the	East/West line	County
L1	19	23 S	30 E		254'	NORTH	427'	WEST	EDDY

<sup>12</sup> Dedicated Acres 480	<sup>13</sup> Joint or Infill	<sup>14</sup> Consolidation Code	<sup>15</sup> Order No.
--------------------------------------	-------------------------------	----------------------------------	-------------------------

No allowable will be assigned to this completion until all interests have been consolidated or a non-standard unit has been approved by the division.

NOTE: AS-DRILLED BOTTOM HOLE PLOTTED FROM DATA FURNISHED BY XTO ENERGY



**<sup>17</sup> OPERATOR CERTIFICATION**  
I hereby certify that the information contained herein is true and complete to the best of my knowledge and belief, and that this organization either owns a working interest or unleased mineral interest in the land including the proposed bottom hole location or has a right to drill this well at this location pursuant to a contract with an owner of such a mineral or working interest, or to a voluntary pooling agreement or a compulsory pooling order heretofore entered by the division.

Signature: Cheryl Rowell Date: 4/29/19  
Printed Name: Cheryl Rowell  
E-mail Address: cheryl\_rowell@xtoenergy.com

**<sup>18</sup> SURVEYOR CERTIFICATION**  
I hereby certify that the well location shown on this plat was plotted from field notes of actual surveys made by me or under my supervision, and that the same is true and correct to the best of my belief.

Date of Survey: 04-30-2019  
Signature and Seal of Professional Surveyor: [Signature]  
Certificate Number: MARK DILLON HARP 23786  
JC/AW 2018051199

