

RECEIVED

District I  
1625 N. French Dr., Hobbs, NM 88240  
District II  
811 S. First St., Artesia, NM 88210  
District III  
1000 Rio Brazos Road, Aztec, NM 87410  
District IV  
1220 S. St. Francis Dr., Santa Fe, NM 87505

State of New Mexico  
Energy, Minerals and Natural Resources Department  
Oil Conservation Division  
1220 South St. Francis Dr.  
Santa Fe, NM 87505  
MAY 17 2019  
DISTRICT II-ARTESIA O.C.D.

Submit Original  
to Appropriate  
District Office

## GAS CAPTURE PLAN

Date: 8-10-2018

☒ Original Operator & OGRID No.: Devon Energy Prod. Co., LP 6137  
☐ Amended - Reason for Amendment:

This Gas Capture Plan outlines actions to be taken by the Operator to reduce well/production facility flaring/venting for new completion (new drill, recomple to new zone, re-frac) activity.

Note: Form C-129 must be submitted and approved prior to exceeding 60 days allowed by Rule (Subsection A of 19.15.18.12 NMAC).

### Well(s)/Production Facility – Name of facility

The well(s) that will be located at the production facility are shown in the table below.

Well Name	API	Well Location (ULSTR)	Footages	Expected MCF/D	Flared or Vented	Comments
Maldives 15-22 Fed Com 711H		Unit D, Sec 15, T23S, R31E	250 FNL 510 FWL			Maldives 15 CTB 1

### Gathering System and Pipeline Notification

Well(s) will be connected to a production facility after flowback operations are complete, if DCP system is in place. The gas produced from production facility is dedicated to DCP and will be connected to DCP low/high pressure gathering system located in Lea County, New Mexico. It will require 75' of pipeline to connect the facility to low/high pressure gathering system. Devon provides (periodically) to DCP a drilling, completion and estimated first production date for wells that are scheduled to be drilled in the foreseeable future. In addition, Devon and DCP have periodic conference calls to discuss changes to drilling and completion schedules. Gas from these wells will be processed at DCP Processing Plant located in Sec.19, Twn.19S, Rng.32E, Lea County, New Mexico. The actual flow of the gas will be based on compression operating parameters and gathering system pressures.

### Flowback Strategy

After the fracture treatment/completion operations, well(s) will be produced to temporary production tanks and gas will be flared or vented. During flowback, the fluids and sand content will be monitored. When the produced fluids contain minimal sand, the wells will be turned to production facilities. Gas sales should start as soon as the wells start flowing through the production facilities, unless there are operational issues on DCP system at that time. Based on current information, it is Devon's belief the system can take this gas upon completion of the well(s).

Safety requirements during cleanout operations from the use of underbalanced air cleanout systems may necessitate that sand and non-pipeline quality gas be vented and/or flared rather than sold on a temporary basis.

### Alternatives to Reduce Flaring

Below are alternatives considered from a conceptual standpoint to reduce the amount of gas flared.

- Power Generation – On lease
  - Only a portion of gas is consumed operating the generator, remainder of gas will be flared
- Compressed Natural Gas – On lease
  - Gas flared would be minimal, but might be uneconomical to operate when gas volume declines
- NGL Removal – On lease
  - Plants are expensive, residue gas is still flared, and uneconomical to operate when gas volume declines

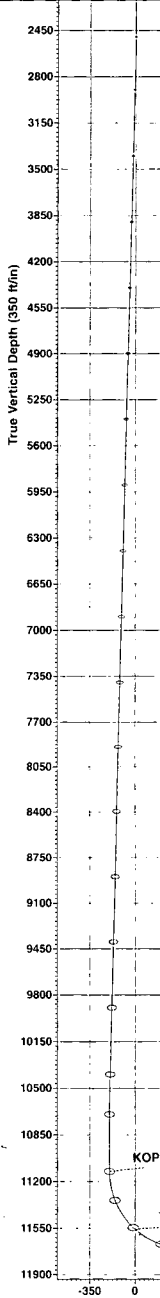
# WCDSC Permian NM

WELL DETAILS: Maldives 15-22 Fed Com 711H

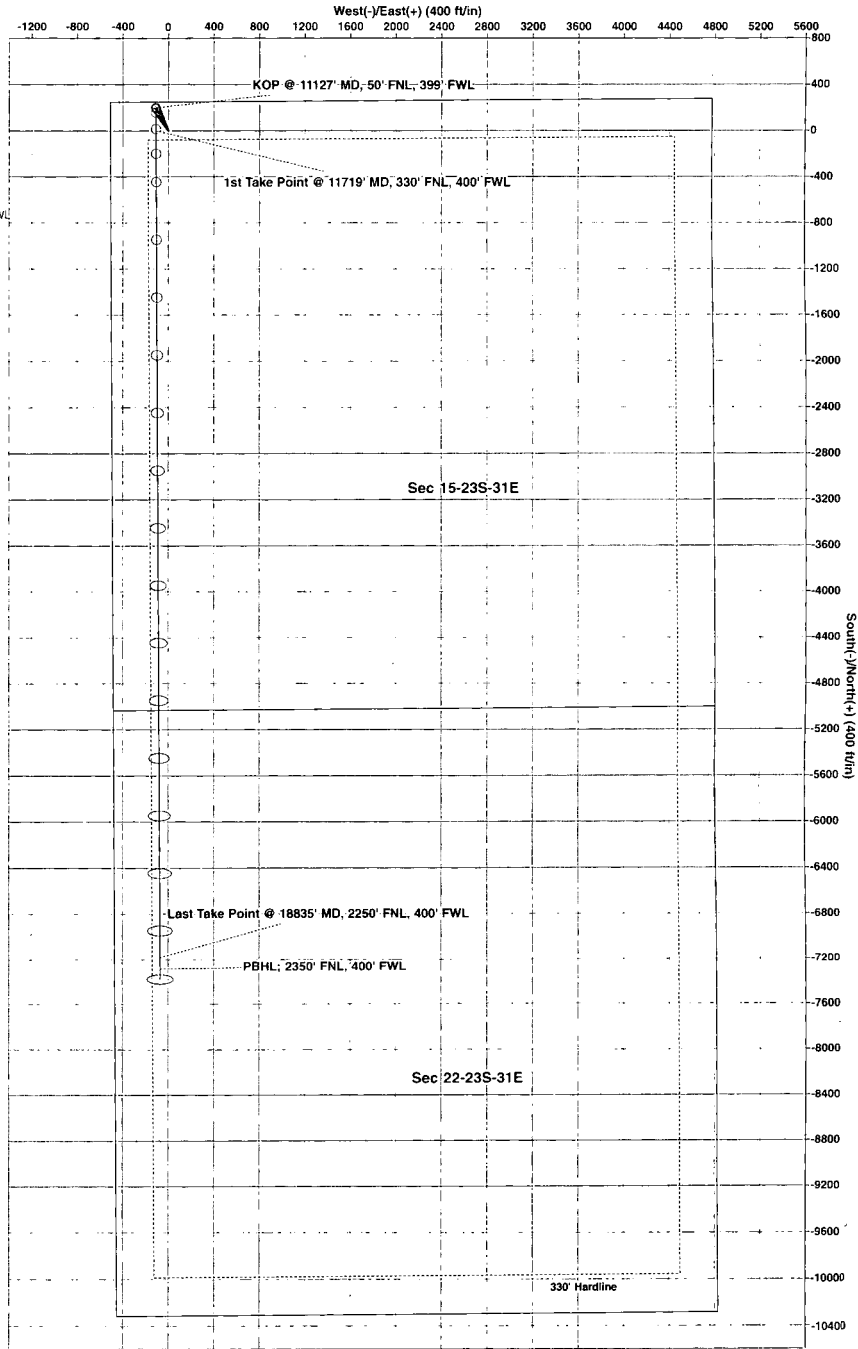
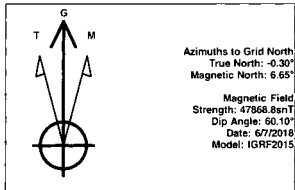
RKB @ 3413.40ft  
3388.40  
Northing 477346.01 Easting 714576.11 Latitude 32.311051 Longitude -103.772580

## SECTION DETAILS Permit Plan 2

MD	Inc	Azi	TVD	+N/-S	+E/-W	Dleg	Vsect	Annotation
0.00	0.00	0.00	0.00	0.00	0.00	0.00	0.00	
2500.00	0.00	0.00	2500.00	0.00	0.00	0.00	0.00	
2662.59	1.63	330.87	2662.56	2.01	-1.12	1.00	-2.00	
10568.83	1.63	330.87	10565.62	197.97	-110.32	0.00	-196.94	
10677.22	0.00	0.00	10674.00	199.31	-111.07	1.50	-198.28	
11127.26	0.00	0.00	11124.04	199.31	-111.07	0.00	-198.28	KOP @ 11127' MD, 50' FNL, 399' FWL
12027.26	90.00	179.68	11697.00	-373.64	-107.82	10.00	374.62	
19034.66	90.00	179.68	11697.00	-7360.92	-68.15	0.00	7361.24	



# devon



Last Take Point @ 18835' MD, 2250' FNL, 400' FWL

PBHL: 2350' FNL, 400' FWL