

District I
1625 N. French Dr., Hobbs, NM 88240
Phone: (575) 393-6161 Fax: (575) 393-0720
District II
811 S. First St., Artesia, NM 88210
Phone: (575) 748-1283 Fax: (575) 748-9720
District III
1000 Rio Brazos Road, Aztec, NM 87410
Phone: (505) 334-6178 Fax: (505) 334-6170
District IV
1220 S. St. Francis Dr., Santa Fe, NM 87505
Phone: (505) 476-3460 Fax: (505) 476-3462

RECEIVED

State of New Mexico
Energy, Minerals & Natural Resources
Department
OIL CONSERVATION DIVISION
1220 South St. Francis Dr.
Santa Fe, NM 87505

FORM C-102

Revised August 1, 2011

Submit one copy to appropriate

District Office

☐ AMENDED REPORT

WELL LOCATION AND ACREAGE DEDICATION PLAT

| | | |
|---|--|---|
| ¹ API Number 30-015-46120 | ² Pool Code 98220 | ³ Pool Name PURPLE SAGE; WOLFCAMP |
| ⁴ Property Code 319943 | ⁵ Property Name CYPRESS 34 FEDERAL | ⁶ Well Number #243H |
| ⁷ OGRID No. 372043 | ⁸ Operator Name TAP ROCK OPERATING, LLC. | ⁹ Elevation 3093' |

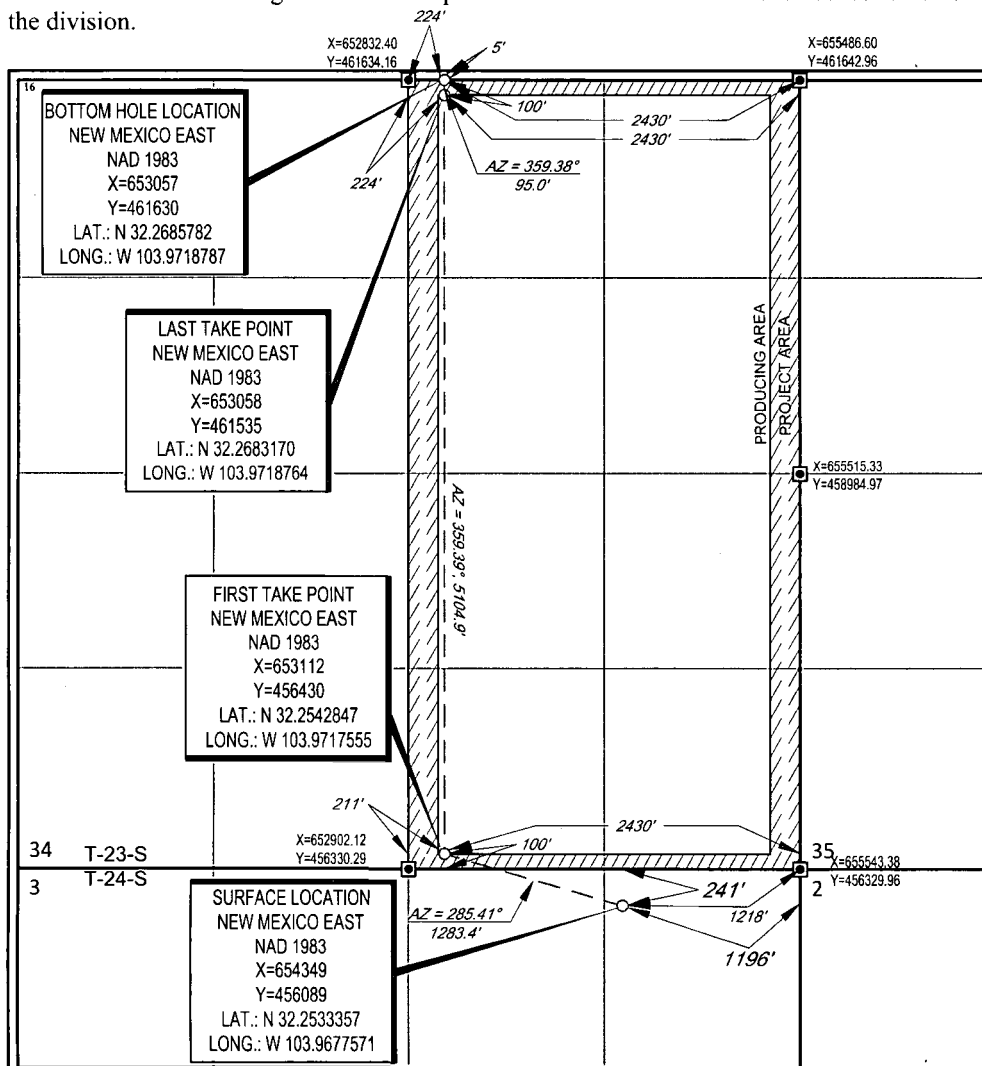
¹⁰Surface Location

| | | | | | | | | | |
|--------------------|--------------|------------------|---------------|--------------|-----------------------|---------------------------|------------------------|------------------------|----------------|
| UL or lot no. 1 | Section 3 | Township 24-S | Range 29-E | Lot Idn - | Feet from the 241' | North/South line NORTH | Feet from the 1196' | East/West line EAST | County EDDY |
|--------------------|--------------|------------------|---------------|--------------|-----------------------|---------------------------|------------------------|------------------------|----------------|

| | | | | | | | | | |
|--------------------|---------------|------------------|---------------|--------------|---------------------|---------------------------|------------------------|------------------------|----------------|
| UL or lot no. B | Section 34 | Township 23-S | Range 29-E | Lot Idn - | Feet from the 5' | North/South line NORTH | Feet from the 2430' | East/West line EAST | County EDDY |
|--------------------|---------------|------------------|---------------|--------------|---------------------|---------------------------|------------------------|------------------------|----------------|

| | | | |
|--------------------------------------|-------------------------------|----------------------------------|-------------------------|
| ¹² Dedicated Acres 320 | ¹³ Joint or Infill | ¹⁴ Consolidation Code | ¹⁵ Order No. |
|--------------------------------------|-------------------------------|----------------------------------|-------------------------|

No allowable will be assigned to this completion until all interests have been consolidated or a non-standard unit has been approved by the division.



¹⁷OPERATOR CERTIFICATION

I hereby certify that the information contained herein is true and complete to the best of my knowledge and belief, and that this organization either owns a working interest or unleased mineral interest in the land including the proposed bottom hole location or has a right to drill this well at this location pursuant to a contract with an owner of such a mineral or working interest, or to a voluntary pooling agreement or a compulsory pooling order heretofore entered by the division.

Signature: *Brian Wood* Date: 10-25-18

Printed Name: Brian Wood

E-mail Address: brian@permitswest.com

¹⁸SURVEYOR CERTIFICATION

I hereby certify that the well location shown on this plat was plotted from field notes of actual surveys made by me or under my supervision, and that the same is true to the best of my belief.

Date of Survey: 08/08/2018
Signature and Seal of Professional Surveyor: *Shawn W. Lloyd*
Certificate Number: 19642

Rw 6-25-19

NSL

Operator Name: TAP ROCK OPERATING LLC

Well Name: CYPRESS 34 FEDERAL

Well Number: 243H

| | NS-Foot | NS Indicator | EW-Foot | EW Indicator | Twsp | Range | Section | Aliquot/Lot/Tract | Latitude | Longitude | County | State | Meridian | Lease Type | Lease Number | Elevation | MD | TVD |
|-------------------|---------|--------------|----------|--------------|------|-------|---------|-------------------|----------------|----------------------|----------|-------------------|-------------------|------------|----------------|---------------|-----------|-----------|
| PPP Leg #1 | 0 | FSL | 242 7 | FEL | 23S | 29E | 34 | Aliquot SWSE | 32.25400 9 | - 103.9717 43 | EDD Y | NEW MEXI CO | NEW MEXI CO | F | NMNM 086024 | - 812 4 | 115 01 | 112 17 |
| EXIT Leg #1 | 5 | FNL | 243 0 | FEL | 23S | 29E | 34 | Aliquot NWNE | 32.26857 82 | - 103.9718 787 | EDD Y | NEW MEXI CO | NEW MEXI CO | F | NMNM 086024 | - 818 2 | 167 76 | 112 75 |
| BHL Leg #1 | 5 | FNL | 243 0 | FEL | 23S | 29E | 34 | Aliquot NWNE | 32.26857 82 | - 103.9718 787 | EDD Y | NEW MEXI CO | NEW MEXI CO | F | NMNM 086024 | - 818 2 | 167 76 | 112 75 |