

DISTRICT I
1625 N. French Dr., Hobbs, NM 88240
DISTRICT II
811 South First, Artesia, NM 88210
DISTRICT III
1000 Rio Brazos Rd., Aztec, NM 87410
DISTRICT IV
2040 South Pacheco, Santa Fe, NM 87505

State of New Mexico
Energy, Minerals and Natural Resources Department

Form C-102
Revised March 17, 1999

Submit to Appropriate District Office
State Lease - 4 Copies
Fee Lease - 3 Copies

OIL CONSERVATION DIVISION

2040 South Pacheco
Santa Fe, New Mexico 87504-2088

☐ AMENDED REPORT

WELL LOCATION AND ACREAGE DEDICATION PLAT

API Number 30-015-34122	Pool Code 79860	Pool Name Laguna Salado, Atoka
Property Code	Property Name SPUD "16" STATE	Well Number 5
OGRID No. 6137	Operator Name DEVON ENERGY PRODUCTION CO., L.P.	Elevation 2962'

Surface Location

UL or lot No.	Section	Township	Range	Lot Idn	Feet from the	North/South line	Feet from the	East/West line	County
1	16	23 S	29 E		2320	SOUTH	660	EAST	EDDY

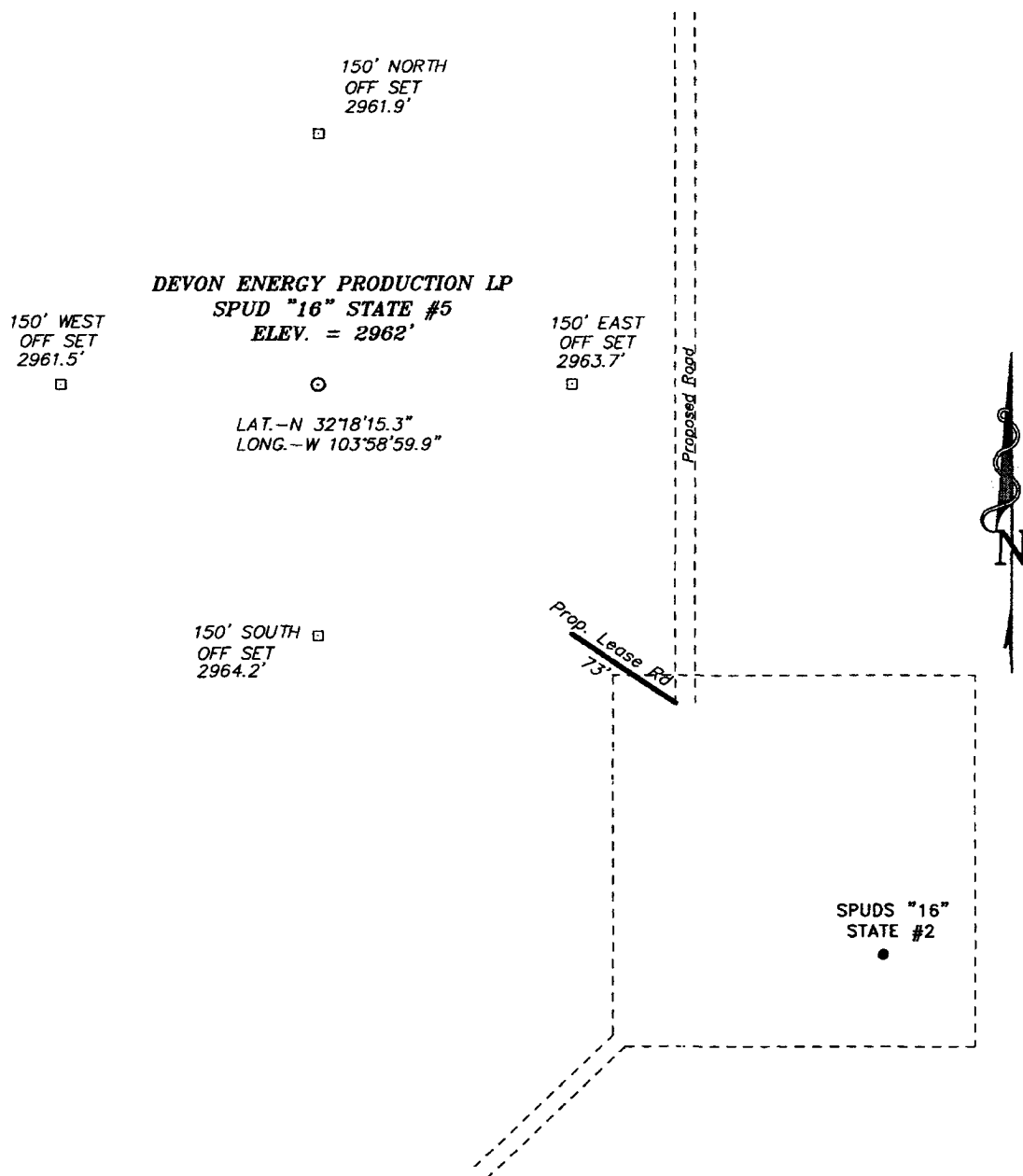
Bottom Hole Location If Different From Surface

UL or lot No.	Section	Township	Range	Lot Idn	Feet from the	North/South line	Feet from the	East/West line	County
Dedicated Acres 320	Joint or Infill	Consolidation Code	Order No.						

NO ALLOWABLE WILL BE ASSIGNED TO THIS COMPLETION UNTIL ALL INTERESTS HAVE BEEN CONSOLIDATED
OR A NON-STANDARD UNIT HAS BEEN APPROVED BY THE DIVISION

<p>RECEIVED MAY 08 2006 OIL & GAS DIVISION</p>	Lot - N32°18'15.3" Long - W103°58'59.9"	
	660'	
	2320'	
<p>OPERATOR CERTIFICATION</p> <p>I hereby certify the the information contained herein is true and complete to the best of my knowledge and belief.</p> <p><i>Norvella Adams</i> Signature Norvella Adams Printed Name Sr. Staff Eng. Tech. Title June 22, 2005 Date</p>		
<p>SURVEYOR CERTIFICATION</p> <p>I hereby certify that the well location shown on this plat was plotted from field notes of actual surveys made by me or under my supervision, and that the same is true and correct to the best of my belief.</p> <p>JUNE 17, 2005 Date Surveyed Signature & Seal of Professional Surveyor W.O. No. 5523 Certificate No. Gary L. Jones 7977</p>		

SECTION 16, TOWNSHIP 23 SOUTH, RANGE 29 EAST, N.M.P.M.,
EDDY COUNTY, NEW MEXICO.



SCALE: 1" = 100'

DIRECTIONS TO LOCATION:

FROM THE MM4 ON STATE HWY 128, GO EAST FOR 0.4 MILE TO CO. RD. 793; THENCE SOUTH 3.5 MILES TO LEASE ROAD; THENCE WEST ON LEASE ROAD FOR 3.0 MILES; THENCE NORTH FOR 1.3 MILES TO 2-TRACK ROAD; THENCE NORTH TO THE SPUDS "16" STATE #2 AND PROPOSED LEASE ROAD.

BASIN SURVEYS P.O. BOX 1786 - HOBBS, NEW MEXICO

W.O. Number: 5523

Drawn By: K. GOAD

Date: 06-17-2005

Disk: KJG #8 - 5523A.DWG

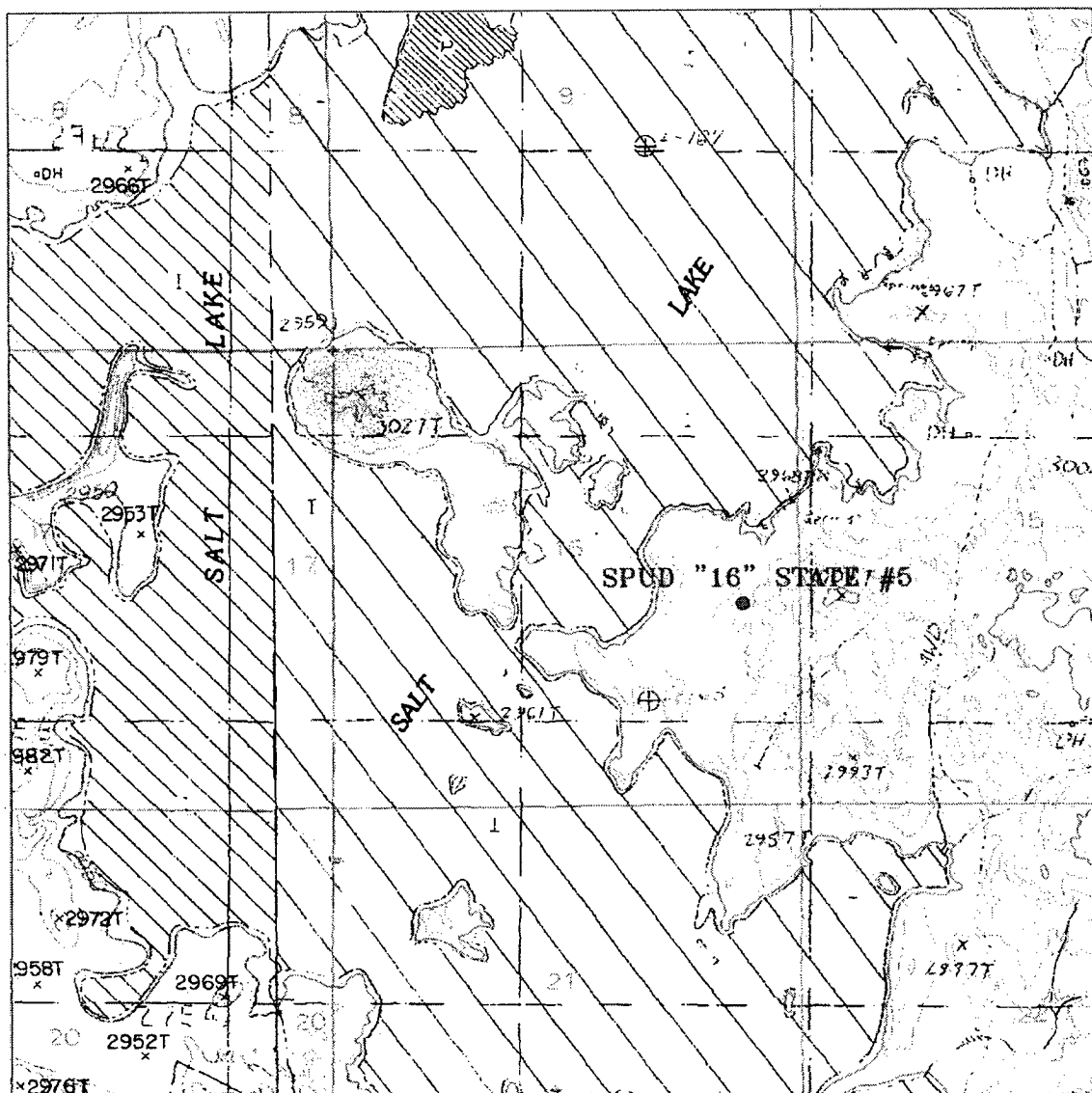
DEVON ENERGY PRODUCTION CO. LP.

REF: SPUD "16" STATE #5 / Well Pad Topo

SPUD "16" STATE #5 LOCATED 2320' FROM THE SOUTH LINE AND 660' FROM THE EAST LINE OF SECTION 16, TOWNSHIP 23 SOUTH, RANGE 29 EAST, N.M.P.M., EDDY COUNTY, NEW MEXICO.

Survey Date: 06-17-2005

Sheet 1 of 1 Sheets



SPUD "16" STATE #5

Located at 2320' FSL and 660' FEL
 Section 16, Township 23 South, Range 29 East,
 N.M.P.M., Eddy County, New Mexico.

basin
surveys

focused on excellence
 in the oilfield

P.O. Box 1786
 1120 N. West County Rd.
 Hobbs, New Mexico 88241
 (505) 393-7316 - Office
 (505) 392-3074 - Fax
 basin-surveys.com

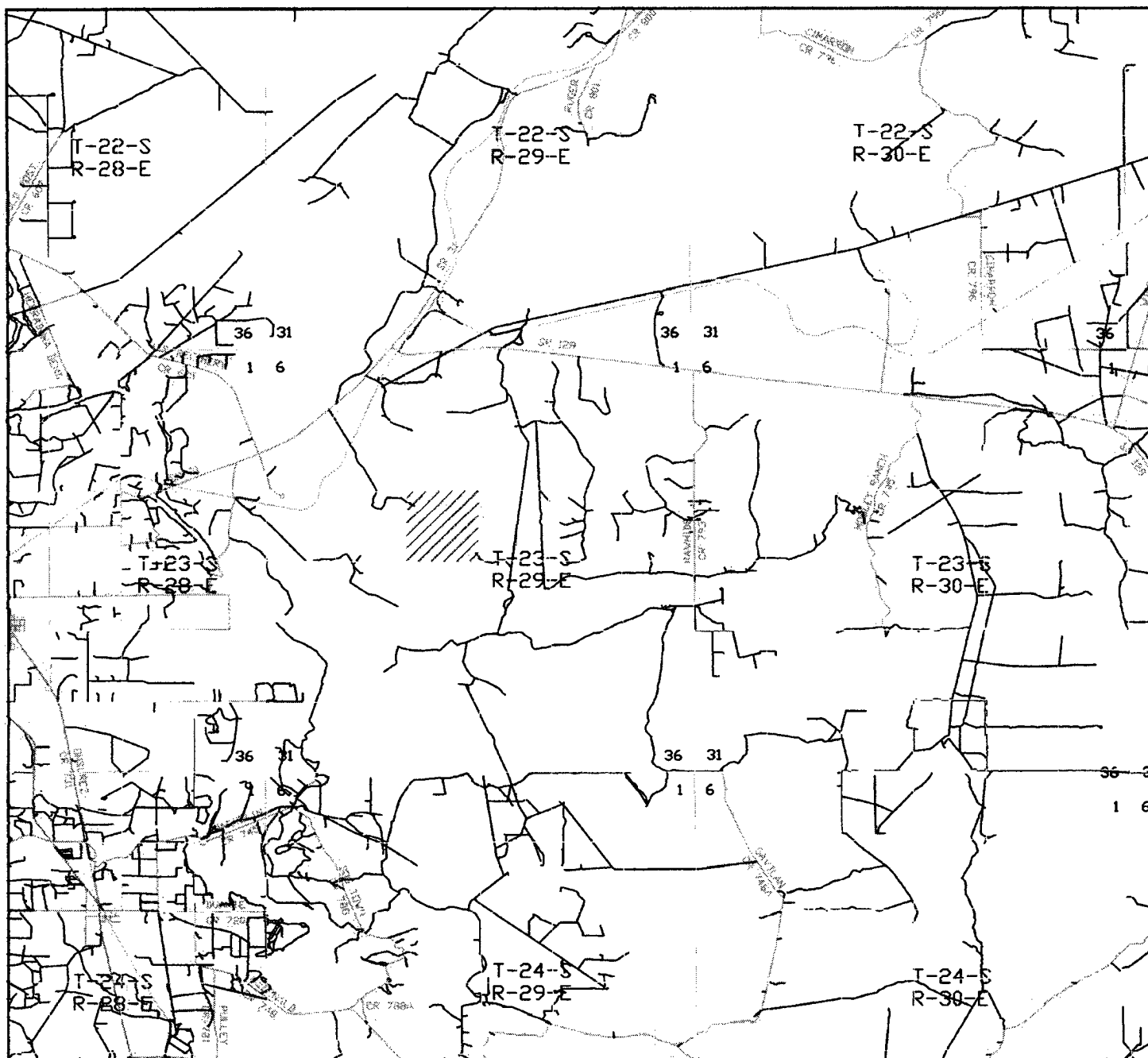
W.D. Number 5523AA - KUG #1

Survey Date 06-17-2005

Scale 1" = 2000'

Date 06-17-2005

DEVON ENERGY
PROD. CO., L.P.



SPUD "16" STATE #5
 Located at 2320' FSL and 660' FEL
 Section 16, Township 23 South, Range 29 East,
 N.M.P.M., Eddy County, New Mexico.

basin
surveys
 focused on excellence
 in the oilfield

P.O. Box 1786
 1120 N. West County Rd.
 Hobbs, New Mexico 88241
 (505) 393-7316 - Office
 (505) 392-3074 - Fax
 basin-surveys.com

W.O. Number: 5523AA - KJG #1

Survey Date: 06-17-2005

Scale: 1" = 2 MILES

Date: 06-17-2005

DEVON ENERGY
PROD. CO., L.P.