

RECEIVED

JUN 27 2019

DISTRICT I
1025 N. FRENCH DR., HOBBS, NM 88240
Phone: (575) 393-6161 Fax: (575) 393-0720

DISTRICT II
811 S. FIRST ST., ARTESIA, NM 88210
Phone: (575) 748-1283 Fax: (575) 748-9720

DISTRICT III
1000 RIO BRAZOS RD., AZTEC, NM 87410
Phone: (505) 334-6178 Fax: (505) 334-6170

DISTRICT IV
1220 S. ST. FRANCIS DR., SANTA FE, NM 87505
Phone: (505) 478-3460 Fax: (505) 478-3462

State of New Mexico
Energy, Minerals & Natural Resources Department

OIL CONSERVATION DIVISION
1220 SOUTH ST. FRANCIS DR.
Santa Fe, New Mexico 87505

Form C-102
Revised August 1, 2011
Submit one copy to appropriate
District Office

☐ AMENDED REPORT

WELL LOCATION AND ACREAGE DEDICATION PLAT

API Number 30-015-45163	Pool Code 98220	Pool Name Purple Sage; Wolfcamp (Gas)
Property Code 322243	Property Name LITTLEFIELD 33 FEDERAL COM	Well Number 706H
OGRID No. 229137	Operator Name COG OPERATING, LLC	Elevation 2860.4'

Surface Location

UL or lot No.	Section	Township	Range	Lot Idn	Feet from the	North/South line	Feet from the	East/West line	County
10	33	26-S	29-E		300	SOUTH	2376	WEST	EDDY

Bottom Hole Location If Different From Surface

UL or lot No.	Section	Township	Range	Lot Idn	Feet from the	North/South line	Feet from the	East/West line	County
C	28	26-S	29-E		203	NORTH	1536	WEST	EDDY

Dedicated Acres	Joint or Infill	Consolidation Code	Order No.
463.13			

NO ALLOWABLE WILL BE ASSIGNED TO THIS COMPLETION UNTIL ALL INTERESTS HAVE BEEN CONSOLIDATED
OR A NON-STANDARD UNIT HAS BEEN APPROVED BY THE DIVISION

SEE PAGE 2

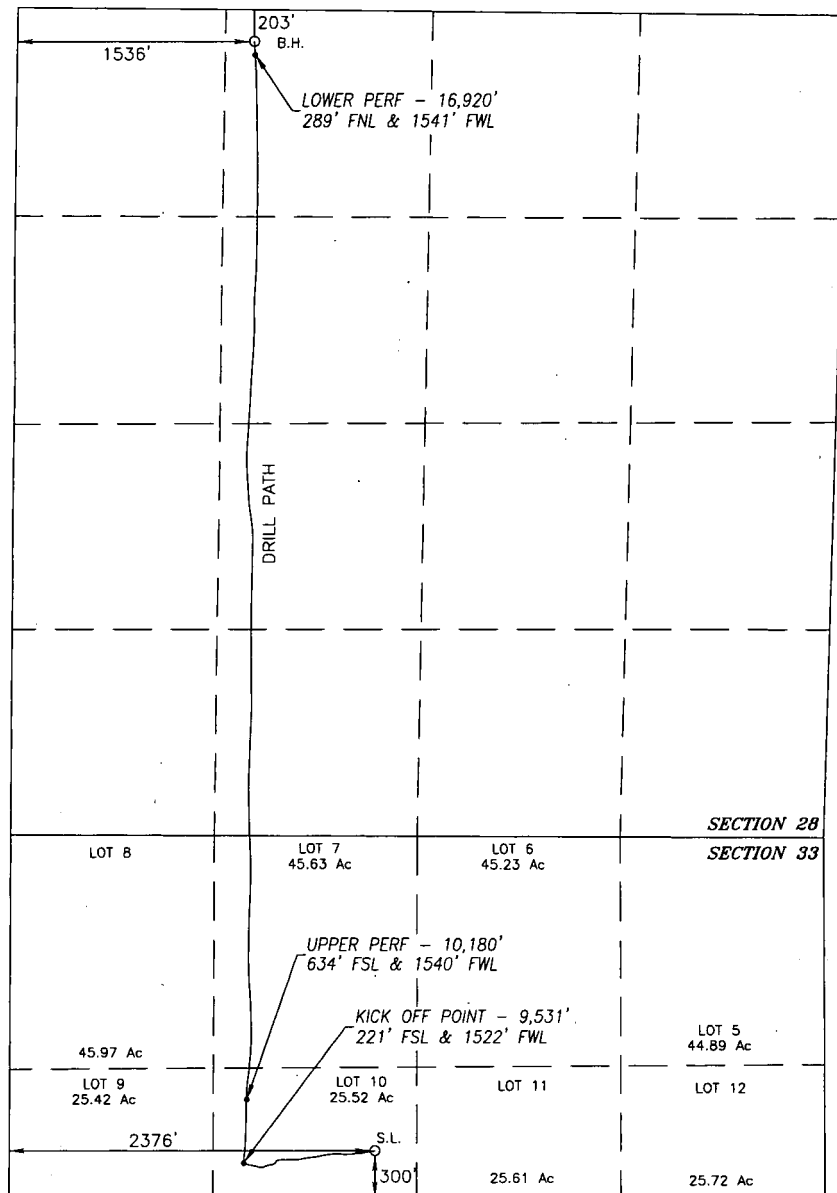
PAGE 1 OF 2

W.O. #19-989

DRAWN BY: WN

Property Code 322243	Property Name LITTLEFIELD 33 FEDERAL COM	Well Number 706H
OGRID No. 229137	Operator Name COG OPERATING, LLC	Elevation 2860.4'

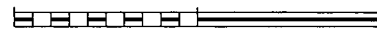
NAD 83 NME
BOTTOM
HOLE LOCATION
Y=371391.6 N
X=646826.5 E
LAT.=32.020579° N
LONG.=103.992958° W



NAD 83 NME
SURFACE LOCATION
Y=364249.3 N
X=647601.2 E
LAT.=32.000938° N
LONG.=103.990531° W

BOREPATH SHOWN HEREON IS BASED ON
DIRECTIONAL SURVEY REPORT PROVIDED BY
COG OPERATING, LLC FOR THE LITTLEFIELD 33
FEDERAL COM #706H SUPPLIED TO HARCROW
SURVEYING, LLC ON MAY 23, 2019

1200 0 1200



SCALE: 1"=1200'

OPERATOR CERTIFICATION

I hereby certify that the information herein is true and complete to the best of my knowledge and belief, and that this organization either owns a working interest or unleased mineral interest in the land including the proposed bottom hole location or has a right to drill this well at this location pursuant to a contract with an owner of such mineral or working interest, or to a voluntary pooling agreement or a compulsory pooling order heretofore entered by the division.

Amanda Avery 6/11/19
Signature Date

Amanda Avery

Printed Name

aavery@concho.com

E-mail Address

SURVEYOR CERTIFICATION

I hereby certify that the well location shown on this plat was plotted from field notes of actual surveys made by me or under my supervision, and that the same is true and correct to the best of my belief.

SEPT. 12, 2018/FEB. 11, 2019

Date of Survey/Date of Geographic Survey

Signature & Seal of Professional Surveyor



Chad Harcrow 5/30/19
Certificate No. CHAD HARCROW 17777