

AUG 22 2019

Form C-102

Revised August 1, 2011

Submit one copy to appropriate
District Office

RECEIVED

AMENDED REPORT

DISTRICT I
1625 N. French Dr., Hobbs, NM 88240
Phone: (575) 393-6161 Fax: (575) 393-0720
DISTRICT II
811 S. First St., Artesia, NM 88210
Phone: (575) 748-1283 Fax: (575) 748-9720
DISTRICT III
1000 Rio Brazos Road, Aztec, NM 87410
Phone: (505) 334-6178 Fax: (505) 334-6170
DISTRICT IV
1220 S. St. Francis Dr., Santa Fe, NM 87505
Phone: (505) 476-3460 Fax: (505) 476-3462

State of New Mexico
Energy, Minerals & Natural Resources Department
OIL CONSERVATION DIVISION
1220 South St. Francis Dr.
Santa Fe, New Mexico 87505

WELL LOCATION AND ACREAGE DEDICATION PLAT

API Number 30-015-45349	Pool Code 98220	Pool Name Purple Sage: Wolfcamp
Property Code 322433	Property Name ALISA OGDEN 15	Well Number 1H
OGRID No. 249099	Operator Name CAZA OPERATING, LLC	Elevation 3127'

Surface Location

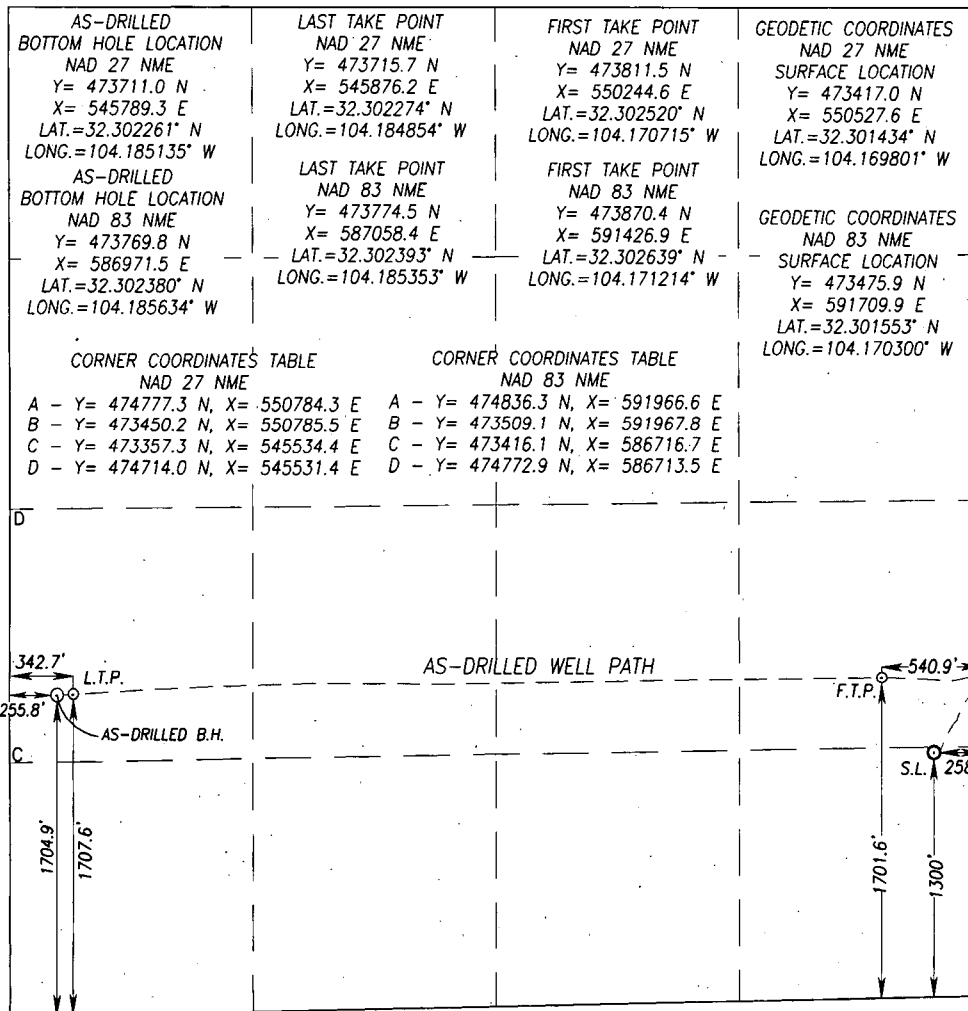
UL or lot No.	Section	Township	Range	Lot Idn	Feet from the	North/South line	Feet from the	East/West line	County
P	15	23-S	27-E		1300	SOUTH	258	EAST	EDDY

AS-Drilled Bottom Hole Location If Different From Surface

UL or lot No.	Section	Township	Range	Lot Idn	Feet from the	North/South line	Feet from the	East/West line	County
L	15	23-S	27-E		1704.9	SOUTH	255.8	WEST	EDDY

Dedicated Acres 320	Joint or Infill	Consolidation Code	Order No.
-------------------------------	-----------------	--------------------	-----------

NO ALLOWABLE WILL BE ASSIGNED TO THIS COMPLETION UNTIL ALL INTERESTS HAVE BEEN CONSOLIDATED OR A NON-STANDARD UNIT HAS BEEN APPROVED BY THE DIVISION



OPERATOR CERTIFICATION

I hereby certify that the information herein is true and complete to the best of my knowledge and belief, and that this organization either owns a working interest or unleased mineral interest in the land including the proposed bottom hole location or has a right to drill this well at this location pursuant to a contract with an owner of such mineral or working interest, or to a voluntary pooling agreement or a compulsory pooling order heretofore entered by the division.

Signature

07/19/2019
Date

Steve Morris

Printed Name

steve.morris@morcoreengineering.com

E-mail Address

SURVEYOR CERTIFICATION

I hereby certify that the well location shown on this plat was plotted from field notes of a survey made by me or under my supervision, and that the same is true and correct to the best of my knowledge.

Date of Survey

3239

Signature

Seal of Professional Surveyor

REGISTERED PROFESSIONAL SURVEYOR

SEPTEMBER 2018

3239

07/19/2019

Ronald J. Eidson

Certificate Number

Gary G. Eidson 12641

Ronald J. Eidson 3239

LSL Rel. 18.13.1224 JWSC W.O. 19.13.0636

RwR 9-17-19