

District I  
1625 N. French Dr., Hobbs, NM 88240  
Phone: (575) 393-6161 Fax: (575) 393-0720  
District II  
811 S. First St., Artesia, NM 88210  
Phone: (575) 748-1283 Fax: (575) 748-9720  
District III  
1000 Rio Brazos Road, Aztec, NM 87410  
Phone: (505) 334-6178 Fax: (505) 334-6170  
District IV  
1220 S. St. Francis Dr., Santa Fe, NM 87505  
Phone: (505) 476-3460 Fax: (505) 476-3462

WELL LOCATION AND ACREAGE DEDICATION PLAT

326260

<sup>1</sup> API Number 30-015-46429	<sup>2</sup> Pool Code 98200-98220	<sup>3</sup> Pool Name Purple Sage; Wolfcamp
<sup>4</sup> Property Code 373075	<sup>5</sup> Property Name POKER LAKE UNIT 18 TWR	<sup>6</sup> Well Number 152H
<sup>7</sup> OGRID No.	<sup>8</sup> Operator Name XTO PERMIAN OPERATING, LLC	<sup>9</sup> Elevation 3,495'

<sup>10</sup> Surface Location

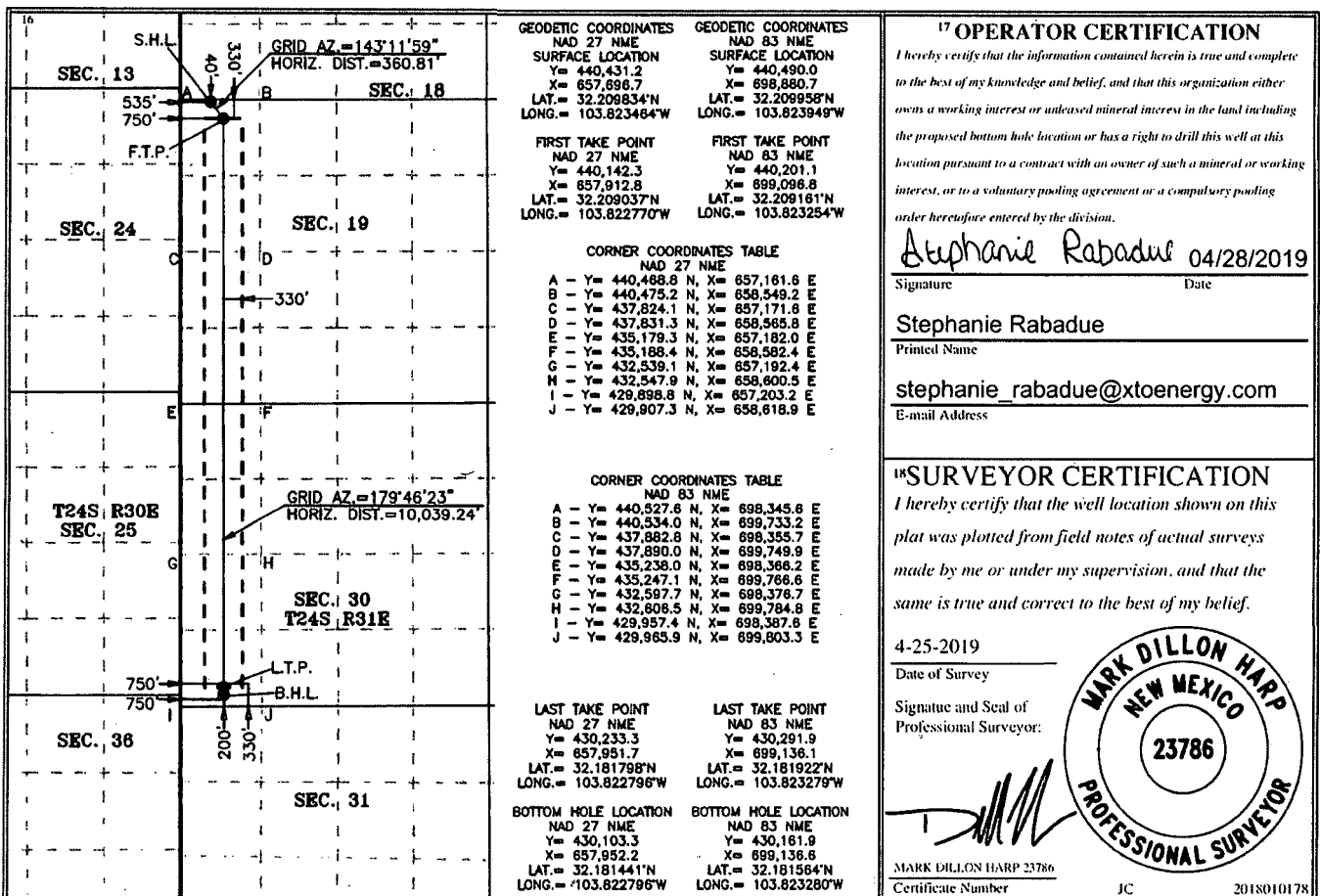
UL or lot no.	Section	Township	Range	Lot Idn	Feet from the	North/South line	Feet from the	East/West line	County
L1	19	24 S	31 E		40	NORTH	535	WEST	EDDY

<sup>11</sup> Bottom Hole Location If Different From Surface

UL or lot no.	Section	Township	Range	Lot Idn	Feet from the	North/South line	Feet from the	East/West line	County
L4	30	24 S	31 E		200	SOUTH	750	WEST	EDDY

<sup>12</sup> Dedicated Acres 640	<sup>13</sup> Joint or Infill 654,30	<sup>14</sup> Consolidation Code	<sup>15</sup> Order No. 151
--------------------------------------	---	----------------------------------	--------------------------------

No allowable will be assigned to this completion until all interests have been consolidated or a non-standard unit has been approved by the division.



RWP-1-19

OCT 29 2019

RECEIVED

Intent  As Drilled

API #

Operator Name: XTO PERMIAN OPERATING, LLC	Property Name: POKER LAKE UNIT 18 TWR	Well Number 152H
--	--	---------------------

Kick Off Point (KOP)

UL	Section 19	Township 24S	Range 31E	Lot 1	Feet 40	From N/S NORTH	Feet 535	From E/W WEST	County EDDY
Latitude 32.209834					Longitude -103.823464				NAD 83

First Take Point (FTP)

UL	Section 19	Township 24S	Range 31E	Lot 1	Feet 330	From N/S NORTH	Feet 750	From E/W WEST	County EDDY
Latitude 32.209037					Longitude -103.822770				NAD 83

Last Take Point (LTP)

UL	Section 30	Township 24S	Range 31E	Lot 4	Feet 330	From N/S SOUTH	Feet 750	From E/W WEST	County EDDY
Latitude 32.181798					Longitude -103.822796				NAD 83

Is this well the defining well for the Horizontal Spacing Unit?  N

Is this well an infill well?  Y

If infill is yes please provide API if available, Operator Name and well number for Defining well for Horizontal Spacing Unit.

API #

Operator Name: XTO PERMIAN OPERATING, LLC	Property Name: POKER LAKE UNIT 18 TWR	Well Number 102H
--	--	---------------------