

District I  
1625 N. French Dr., Hobbs, NM 88240  
Phone: (575) 393-6161 Fax: (575) 393-0720  
District II  
811 S. First St., Artesia, NM 88210  
Phone: (575) 748-1283 Fax: (575) 748-9720  
District III  
1000 Rio Brazos Road, Aztec, NM 87410  
Phone: (505) 334-6178 Fax: (505) 334-6179  
District IV  
1220 S. St. Francis Dr., Santa Fe, NM 87505  
Phone: (505) 476-3460 Fax: (505) 476-3462

RECEIVED

JAN 09 2020

EMNRD-OCD ARTESIA

State of New Mexico  
Energy, Minerals & Natural Resources  
Department  
OIL CONSERVATION DIVISION  
1220 South St. Francis Dr.  
Santa Fe, NM 87505

FORM C-102

Revised August 1, 2011

Submit one copy to appropriate

District Office

☐ AMENDED REPORT

# WELL LOCATION AND ACREAGE DEDICATION PLAT

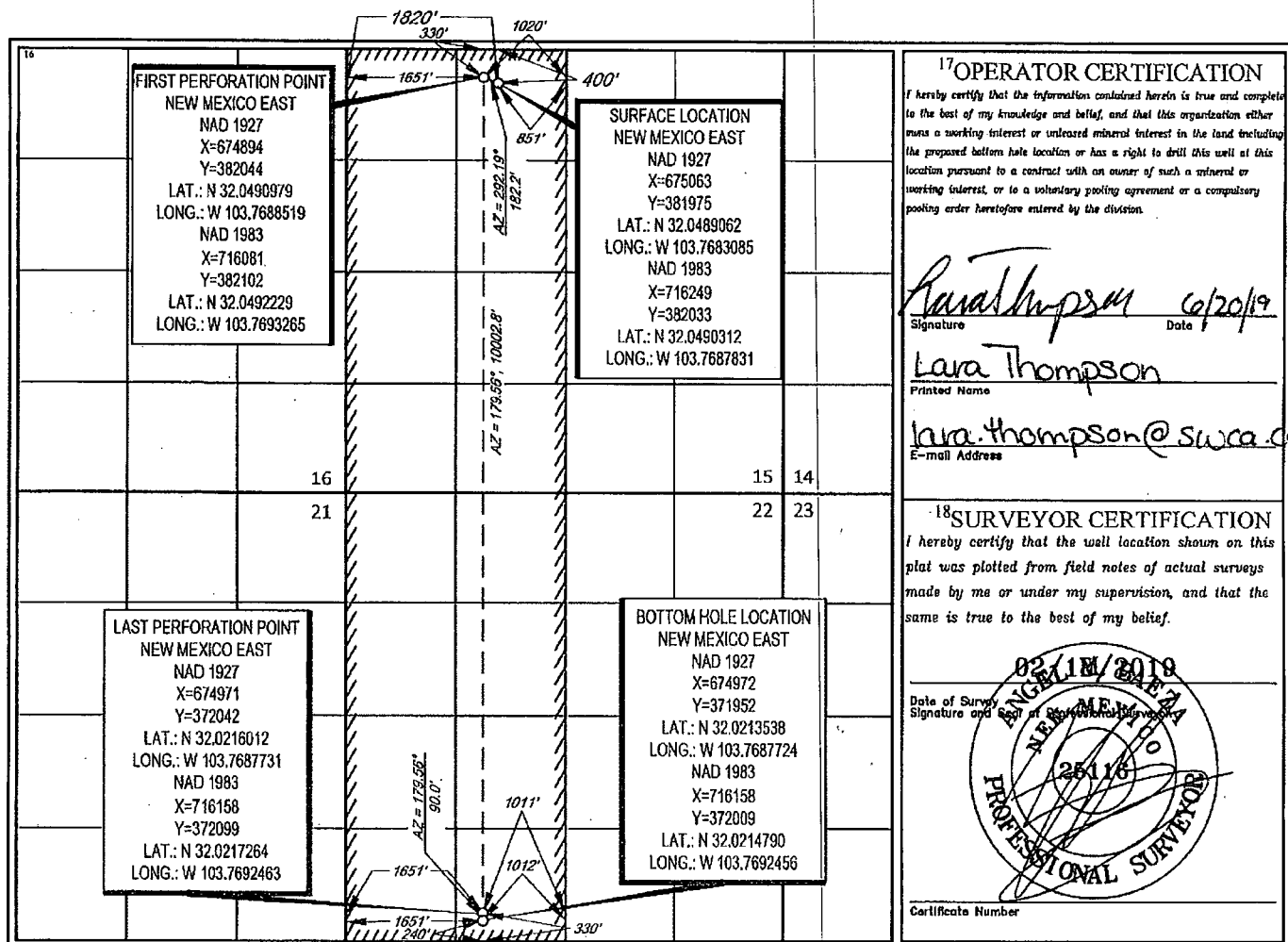
<sup>1</sup> API Number <b>30-015-46595</b>		<sup>2</sup> Pool Code <b>98220</b>		<sup>3</sup> Pool Name <b>Purple SAGE Wolfcamp.</b>	
<sup>4</sup> Property Code <b>326329</b>		<sup>5</sup> Property Name <b>BOROS FED COM</b>		<sup>6</sup> Well Number <b>222H</b>	
<sup>7</sup> OGRID No. <b>228937</b>		<sup>8</sup> Operator Name <b>MATADOR PRODUCTION COMPANY</b>		<sup>9</sup> Elevation <b>3226'</b>	

<sup>10</sup> Surface Location									
UL or lot no.	Section	Township	Range	Lot Idn.	Feet from the	North/South line	Feet from the	East/West line	County
<b>C</b>	<b>15</b>	<b>26-S</b>	<b>31-E</b>	<b>-</b>	<b>400'</b>	<b>NORTH</b>	<b>1820'</b>	<b>WEST</b>	<b>EDDY</b>

<sup>11</sup> Bottom Hole Location If Different From Surface									
UL or lot no.	Section	Township	Range	Lot Idn.	Feet from the	North/South line	Feet from the	East/West line	County
<b>N</b>	<b>22</b>	<b>26-S</b>	<b>31-E</b>	<b>-</b>	<b>240'</b>	<b>SOUTH</b>	<b>1651'</b>	<b>WEST</b>	<b>EDDY</b>

<sup>12</sup> Dedicated Acres <b>640</b>	<sup>13</sup> Joint or Infill	<sup>14</sup> Consolidation Code	<sup>15</sup> Order No. <b>1652</b>
---	-------------------------------	----------------------------------	--

No allowable will be assigned to this completion until all interests have been consolidated or a non-standard unit has been approved by the division.



## <sup>17</sup>OPERATOR CERTIFICATION

I hereby certify that the information contained herein is true and complete to the best of my knowledge and belief, and that this organization either owns a working interest or unleased mineral interest in the land including the proposed bottom hole location or has a right to drill this well at this location pursuant to a contract with an owner of such a mineral or working interest, or to a voluntary pooling agreement or a compulsory pooling order heretofore entered by the division.

*Lara Thompson* 6/20/19  
Signature Date

Lara Thompson  
Printed Name

lara.thompson@swca.com  
E-mail Address

## <sup>18</sup>SURVEYOR CERTIFICATION

I hereby certify that the well location shown on this plat was plotted from field notes of actual surveys made by me or under my supervision, and that the same is true to the best of my belief.

02/18/2019  
Date of Survey  
Signature and Seal of Registered Professional Surveyor  
ANGEL M. BARRERA  
25116  
PROFESSIONAL SURVEYOR

Certificate Number

Rwp 1-15-2020