

UNITED STATES
DEPARTMENT OF THE INTERIOR
BUREAU OF LAND MANAGEMENT

RECEIVED

JAN 09 2020
CARLSBAD ARTESIA
ELECTRONIC SUBMISSIONFORM APPROVED
OMB No. 1004-0137
Expires: July 31, 2010

WELL COMPLETION OR RECOMPLETION REPORT AND LOG

5. Lease Serial No.
NMNM881391a. Type of Well ☒ Oil Well ☐ Gas Well ☐ Dry ☐ Other
b. Type of Completion ☒ New Well ☐ Work Over ☐ Deepen ☐ Plug Back ☐ Diff. Resvr.
Other _____

6. If Indian, Allottee or Tribe Name

7. Unit or CA Agreement Name and No.

2. Name of Operator
OXY USA INCORPORATEDContact: JANA MENDIOLA
E-Mail: janalyn_mendiola@oxy.com8. Lease Name and Well No.
CORRAL FLY 35-26 FEDERAL COM 33H3. Address 5 GREENWAY PLAZA SUITE 110
HOUSTON, TX 77046-05213a. Phone No. (include area code)
Ph: 432-685-59369. API Well No.
30-015-44728-00-S14. Location of Well (Report location clearly and in accordance with Federal requirements)*
At surface Lot 4 694FNL 1068FWL 32.164627 N Lat, 103.960241 W Lon
Sec 2 T25S R29E Mer NMP
At top prod interval reported below SESW 371FSL 2239FWL 32.167540 N Lat, 103.956450 W Lon
Sec 35 T24S R29E Mer NMP
At total depth NENW 261FNL 2210FWL 32.194940 N Lat, 103.956430 W Lon
Sec 26 T24S R29E Mer NMP10. Field and Pool, or Exploratory
PURPLE SAGE-WOLFCAMP (GAS)11. Sec., T., R., M., or Block and Survey
or Area Sec 2 T25S R29E Mer NMP12. County or Parish
EDDY13. State
NM14. Date Spudded
11/23/201815. Date T.D. Reached
03/23/201916. Date Completed
☐ D & A ☒ Ready to Prod.
04/22/201917. Elevations (DF, KB, RT, GL)*
3014 GL18. Total Depth: MD 20990
TVD 1026019. Plug Back T.D.: MD 20883
TVD 1026020. Depth Bridge Plug Set: MD
TVD21. Type Electric & Other Mechanical Logs Run (Submit copy of each)
GAMMARAY CBL22. Was well cored? ☒ No ☐ Yes (Submit analysis)
Was DST run? ☒ No ☐ Yes (Submit analysis)
Directional Survey? ☐ No ☒ Yes (Submit analysis)

23. Casing and Liner Record (Report all strings set in well)

Hole Size	Size/Grade	Wt. (#/ft.)	Top (MD)	Bottom (MD)	Stage Cementer Depth	No. of Sk. & Type of Cement	Slurry Vol. (BBL)	Cement Top*	Amount Pulled
14.750	10.750 J55	45.5	0	721		1290	312	0	
9.875	7.625 HCL80	26.4	0	9849	3196	1280	587	0	
6.750	5.500 P110	20.0	0	20970		859	205	9348	

24. Tubing Record

Size	Depth Set (MD)	Packer Depth (MD)	Size	Depth Set (MD)	Packer Depth (MD)	Size	Depth Set (MD)	Packer Depth (MD)

25. Producing Intervals

Formation	Top	Bottom	Perforated Interval	Size	No. Holes	Perf. Status
A) WOLFCAMP	11013	20889	11013 TO 20889	0.370	1200	ACTIVE
B)						
C)						
D)						

26. Perforation Record

27. Acid, Fracture, Treatment, Cement Squeeze, Etc.

Depth Interval	Amount and Type of Material
11013 TO 20889	8481564G SLICKWATER + 26334G 7.5% HCL ACID W/15020744# SAND

28. Production - Interval A

Date First Produced	Test Date	Hours Tested	Test Production	Oil BBL	Gas MCF	Water BBL	Oil Gravity Corr. API	Gas Gravity	Production Method
04/24/2019	05/03/2019	24	→	2640.0	4948.0	5464.0			FLows FROM WELL
Choke Size	Tbg. Press. Flwg.	Csg. Press.	24 Hr. Rate	Oil BBL	Gas MCF	Water BBL	Gas:Oil Ratio	Well Status	
44/128	SI	2485.0	→	2640	4948	5464	1874	POW	

28a. Production - Interval B

Date First Produced	Test Date	Hours Tested	Test Production	Oil BBL	Gas MCF	Water BBL	Oil Gravity Corr. API	Gas Gravity	Production Method
			→						DEC - 3 2019
Choke Size	Tbg. Press. Flwg.	Csg. Press.	24 Hr. Rate	Oil BBL	Gas MCF	Water BBL	Gas:Oil Ratio	Well Status	
	SI		→						

(See Instructions and spaces for additional data on reverse side)

ELECTRONIC SUBMISSION #472831 VERIFIED BY THE BLM WELL INFORMATION SYSTEM

** BLM REVISED ** BLM REVISED ** BLM REVISED ** BLM REVISED ** BLM REVISED **

Reclamation Due: 10/22/2019

ACCEPTED FOR RECORD
DEC - 3 2019
BUREAU OF LAND MANAGEMENT
CARLSBAD FIELD OFFICE

28b. Production - Interval C

Date First Produced	Test Date	Hours Tested	Test Production →	Oil BBL	Gas MCF	Water BBL	Oil Gravity Corr. API	Gas Gravity	Production Method
Choke Size	Tbg. Press. Flwg. SI	Csg. Press.	24 Hr. Rate →	Oil BBL	Gas MCF	Water BBL	Gas:Oil Ratio	Well Status	

28c. Production - Interval D

Date First Produced	Test Date	Hours Tested	Test Production →	Oil BBL	Gas MCF	Water BBL	Oil Gravity Corr. API	Gas Gravity	Production Method
Choke Size	Tbg. Press. Flwg. SI	Csg. Press.	24 Hr. Rate →	Oil BBL	Gas MCF	Water BBL	Gas:Oil Ratio	Well Status	

29. Disposition of Gas(Sold, used for fuel, vented, etc.)
SOLD

30. Summary of Porous Zones (Include Aquifers):

Show all important zones of porosity and contents thereof: Cored intervals and all drill-stem tests, including depth interval tested, cushion used, time tool open, flowing and shut-in pressures and recoveries.

31. Formation (Log) Markers

Formation	Top	Bottom	Descriptions, Contents, etc.	Name	Top Meas. Depth
BELL CANYON	3158	4035	OIL, GAS, WATER	RUSTLER	257
CHERRY CANYON	4036	5582	OIL, GAS, WATER	SALADO	685
BRUSHY CANYON	5583	6909	OIL, GAS, WATER	CASTILE	1660
BONE SPRING	6910	7906	OIL, GAS, WATER	LAMAR	3129
BONE SPRING 1ST	7907	8537	OIL, GAS, WATER	BELL CANYON	3158
BONE SPRING 2ND	8538	9850	OIL, GAS, WATER	CHERRY CANYON	4036
BONE SPRING 3RD	9851	10463	OIL, GAS, WATER	BRUSHY CANYON	5583
WOLFCAMP	10464		OIL, GAS, WATER	BONE SPRING	6910

32. Additional remarks (include plugging procedure):

52. FORMATION (LOG) MARKERS CONTD.

1ST BONE SPRING 7907' MD
2ND BONE SPRING 8538' MD
3RD BONE SPRING 9851' MD
WOLFCAMP 10464' MD

Logs were mailed 7/12/19.

33. Circle enclosed attachments:

- | | | | |
|---|--------------------|---------------|-----------------------|
| 1. Electrical/Mechanical Logs (1 full set req'd.) | 2. Geologic Report | 3. DST Report | 4. Directional Survey |
| 5. Sundry Notice for plugging and cement verification | 6. Core Analysis | 7. Other: | |

34. I hereby certify that the foregoing and attached information is complete and correct as determined from all available records (see attached instructions):

Electronic Submission #472831 Verified by the BLM Well Information System.

For OXY USA INCORPORATED, sent to the Carlsbad

Committed to AFMSS for processing by DINAH NEGRETE on 09/28/2019 (19DCN0288SE)

Name (please print) JANA MENDIOLA

Title REGULATORY SPECIALIST

Signature (Electronic Submission)

Date 07/10/2019

Title 18 U.S.C. Section 1001 and Title 43 U.S.C. Section 1212, make it a crime for any person knowingly and willfully to make to any department or agency of the United States any false, fictitious or fraudulent statements or representations as to any matter within its jurisdiction.

**** REVISED ** REVISED ** REVISED ** REVISED ** REVISED ** REVISED ** REVISED ** REVISED ****

Additional data for transaction #472831 that would not fit on the form

32. Additional remarks, continued

Log Header, Directional Survey, As-Drilled Amended C-102 plat & WBD are attached.

District I
1623 N. French Dr., Hobbs, NM 88240
Phone: (575) 393-6161 Fax: (575) 393-0720
District II
811 S. First St., Artesia, NM 88210
Phone: (575) 748-1283 Fax: (575) 748-9720
District III
1600 Rio Bravos Road, Aztec, NM 87410
Phone: (505) 334-6178 Fax: (505) 334-6170
District IV
1220 S. St. Francis Dr., Santa Fe, NM 87503
Phone: (505) 476-3460 Fax: (505) 476-3462

State of New Mexico
Energy, Minerals & Natural Resources Department
OIL CONSERVATION DIVISION
1220 South St. Francis Dr.
Santa Fe, NM 87505

Form C-102
Revised August 1, 2011
Submit one copy to appropriate
District Office

☒ AMENDED REPORT
(As Drilled)

WELL LOCATION AND ACREAGE DEDICATION PLAT

API Number 30-015-44723	Pool Code 98220	Pool Name Purple Sage Wolfcamp
Property Code 320767	Property Name CORRAL FLY "35-26" FEDERAL COM	Well Number 33H
OGRID No. 16696	Operator Name OXY USA INC.	Elevation 3013.6'

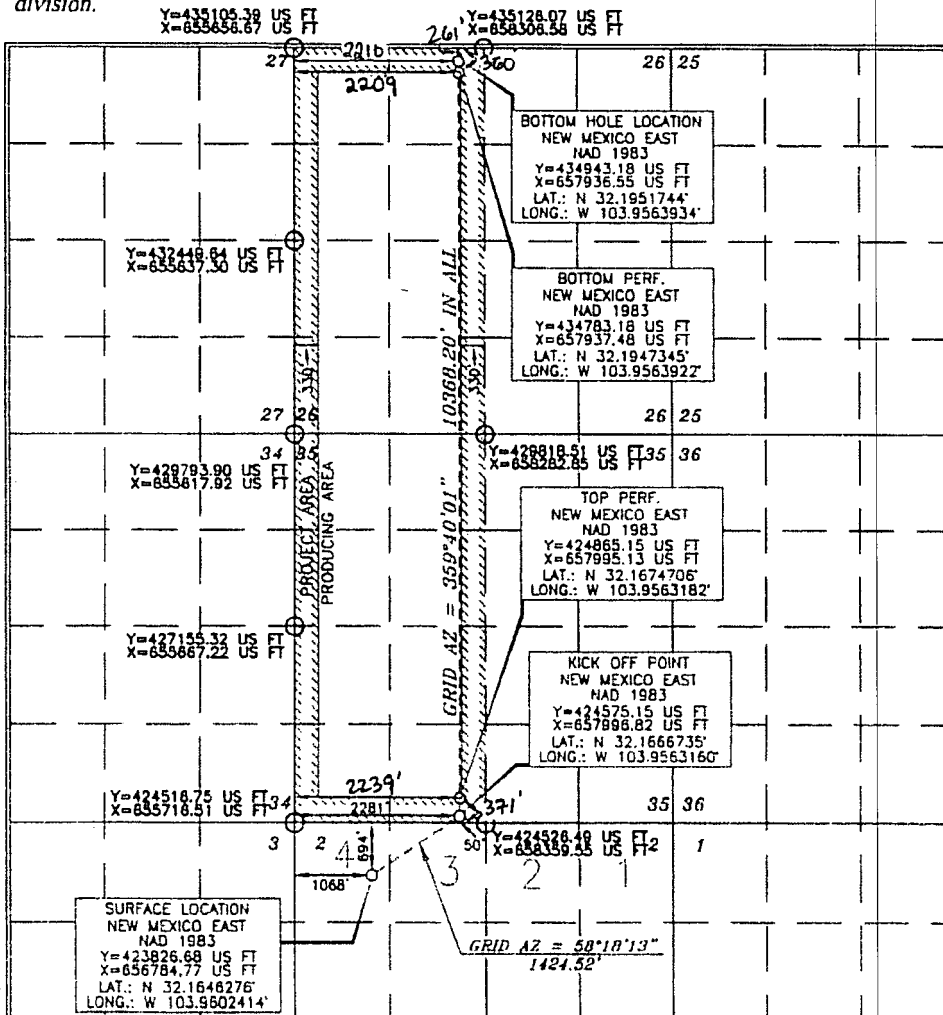
Surface Location

UL or lot no.	Section	Township	Range	Lot Idn	Feet from the	North/South line	Feet from the	East/West line	County
4	2	25 SOUTH	29 EAST, N.M.P.M.		694'	NORTH	1068'	WEST	EDDY

Bottom Hole Location If Different From Surface

UL or lot no.	Section	Township	Range	Lot Idn	Feet from the	North/South line	Feet from the	East/West line	County
C	26	24 SOUTH	29 EAST, N.M.P.M.		180' 261'	NORTH	2209' 2210'	WEST	EDDY
Dedicated Acres 640	Joint or Infill Y	Consolidation Code	Order No.	LTP- 360 FNL 2209 FWL FTP- 371 FSL 2239 FWL					

No allowable will be assigned to this completion until all interests have been consolidated or a non-standard unit has been approved by the division.



OPERATOR CERTIFICATION

I hereby certify that the information contained herein is true and complete to the best of my knowledge and belief, and that the organization either owns a working interest or undivided mineral interest in the land including the proposed bottom hole location or has a right to drill this well at this location pursuant to a contract with an owner of such a mineral or working interest, or to a voluntary pooling agreement or a compulsory pooling order heretofore entered by the division.

Signature: *Jana Mendiola* Date: **4/17/19**
Printed Name: **Jana Mendiola**
Email Address: **janalyn.mendiola@oxy.com**

SURVEYOR CERTIFICATION

I hereby certify that the well location shown on this plat was plotted from the original or actual surveys made by me or under my supervision, and that the same is true and correct to the best of my belief.

Signature: *James J. As...* Date of Survey: **JUNE 20, 2017**
Professional Surveyor: **15079**
Certificate Number: **15079**