

District I  
1625 N. French Dr., Hobbs, NM 88240  
Phone: (575) 393-6161 Fax: (575) 393-0720  
District II  
811 S. First St., Artesia, NM 88210  
Phone: (575) 748-1283 Fax: (575) 748-9720  
District III  
1000 Rio Brazos Road, Aztec, NM 87410  
Phone: (505) 334-6178 Fax: (505) 334-6170  
District IV  
1220 S. St. Francis Dr., Santa Fe, NM 87505  
Phone: (505) 476-3460 Fax: (505) 476-3462

State of New Mexico  
Energy, Minerals & Natural Resources  
Department  
OIL CONSERVATION DIVISION  
1220 South St. Francis Dr.  
Santa Fe, NM 87505

RECEIVED

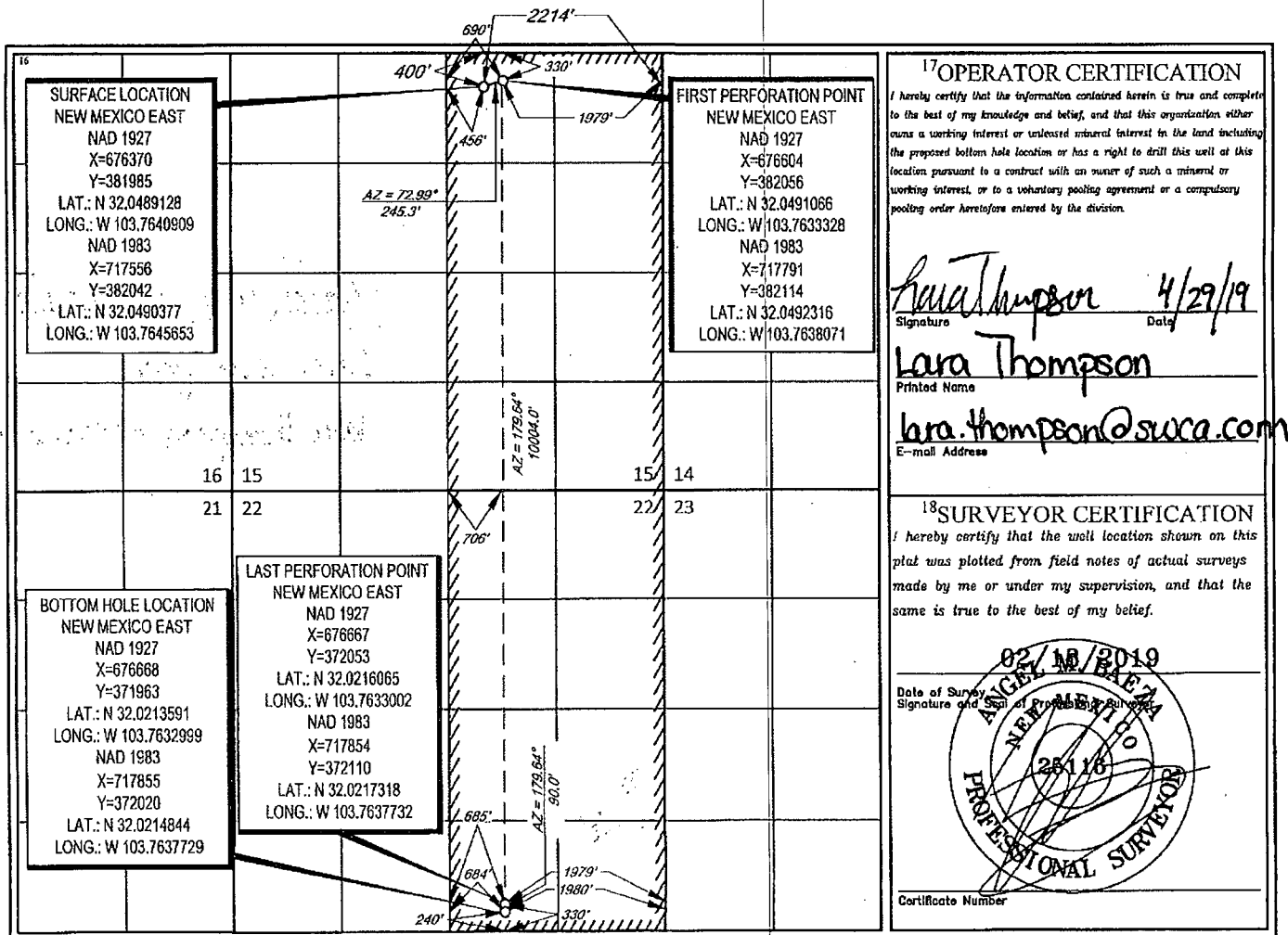
MAR 04 2020

FORM C-102  
Revised August 1, 2011  
Submit one copy to appropriate  
District Office  
AMENDED REPORT

WELL LOCATION AND ACREAGE DEDICATION PLAT

<sup>1</sup> API Number <b>30-015-46853</b>		<sup>2</sup> Pool Code <b>98220</b>		<sup>3</sup> Pool Name <b>Purple Sage; Wolfcamp</b>	
<sup>4</sup> Property Code <b>326329</b>		<sup>5</sup> Property Name <b>BOROS FEDERAL</b>			<sup>6</sup> Well Number <b>243H</b>
<sup>7</sup> GRID No. <b>220937</b>		<sup>8</sup> Operator Name <b>MATADOR PRODUCTION COMPANY</b>			<sup>9</sup> Elevation <b>3224'</b>
<sup>10</sup> Surface Location					
UL or lot no. <b>B</b>	Section <b>15</b>	Township <b>26-S</b>	Range <b>31-E</b>	Lot Idn <b>-</b>	Feet from the <b>400'</b>
		North/South line <b>NORTH</b>		Feet from the <b>2214'</b>	East/West line <b>EAST</b>
				County <b>EDDY</b>	
<sup>11</sup> Bottom Hole Location If Different From Surface					
UL or lot no. <b>0</b>	Section <b>22</b>	Township <b>26-S</b>	Range <b>31-E</b>	Lot Idn <b>-</b>	Feet from the <b>240'</b>
		North/South line <b>SOUTH</b>		Feet from the <b>1980'</b>	East/West line <b>EAST</b>
				County <b>EDDY</b>	
<sup>12</sup> Dedicated Acres <b>640</b>		<sup>13</sup> Joint or Infill		<sup>14</sup> Consolidation Code	
				<sup>15</sup> Order No.	

No allowable will be assigned to this completion until all interests have been consolidated or a non-standard unit has been approved by the division.



RwP 3-16-20