

District I
1625 N. French Dr., Hobbs, NM 88240

District II
1301 W. Grand Avenue, Artesia, NM 88210

District III
1000 Rio Brazos Road, Aztec, NM 87001

District IV
1220 S. St. Francis Dr., Santa Fe, NM 87505

State of New Mexico
Energy Minerals and Natural Resources

Oil Conservation Division
1220 South St. Francis Dr.
Santa Fe, NM 87505

Form C-101
Revised March 17, 1999

Submit to appropriate District Office
State Lease - 6 Copies
Fee Lease - 5 Copies

☐ AMENDED REPORT

APPLICATION FOR PERMIT TO DRILL, RE-ENTER, DEEPEN, PLUGBACK, OR ADD A ZONE

¹ Operator Name and Address V-F Petroleum Inc. P.O. Box 1889 Midland, Texas 79702		² OGRID Number 24010
³ Property Code	⁴ Property Name Imperial Stout 11	⁵ API Number 30-015-32902
		⁶ Well No. 1

⁷ Surface Location

UL or lot no.	Section	Township	Range	Lot Idn	Feet from the	North/South line	Feet from the	East/West line	County
G	11	17S	26E		1,400	North	1,650	East	Eddy

⁸ Proposed Bottom Hole Location If Differ

UL or lot no.	Section	Township	Range	Lot Idn	Feet from the	North/Sou	Cement to cover all oil, gas and water bearing zones.
⁹ Proposed Pool 1 Kennedy Farms, <i>Mcnew</i>							

¹¹ Work Type Code N	¹² Well Type Code G	¹³ Cable/Rotary R	¹⁴ Lease Type Code P	¹⁵ Ground Level Elevation 3,306'
¹⁶ Multiple N	¹⁷ Proposed Depth 8,500'	¹⁸ Formation Chester	¹⁹ Contractor NA	²⁰ Spud Date 8/03

²¹ Proposed Casing and Cement Program

Hole Size	Casing Size	Casing weight/foot	Setting Depth	Sacks of Cement	Estimated TOC
17 1/2	13 3/8	54	450	450	Surface
12 1/4	9 5/8	45	1,350	600	Surface
7 7/8	5 1/2	17	8,500	500	6,000'
Fresh Water Mud to \pm 1350'. <i>BA</i>					

²² Describe the proposed program. If this application is to DEEPEN or PLUG BACK, give the data on the present productive zone and proposed new productive zone. Describe the blowout prevention program, if any. Use additional sheets if necessary.

It is proposed to drill a 17 1/2" hole to \pm 450' with FW, set 13 3/8" csg and cement csg back to surface. An 12 1/4" intermediate hole will be drilled to \pm 1,350' w/ ~~FW~~ *FW* system and 9 5/8" csg will be set and cemented back to surface. A 3,000 psi annular preventer and a 3,000 psi dual ram BOP will be used in the intermediate hole. A 7 7/8" hole will be drilled to TD w/ FW mud. 5 1/2" casing will be set @ TD and cemented. A 3,000 psi annular preventer and a 5,000 psi dual ram BOP will be used on the 7 7/8" hole. Mud up between 6,000 and 8,500' Several DST's may be run. No H2S is expected.

²³ I hereby certify that the information given above is true and complete to the best of my knowledge and belief.

Signature: *Larry Brazile*

Printed name: Larry N. Brazile

Title: Petroleum Engineer

Date: July 23, 2003

Phone: 432-683-3344

OIL CONSERVATION DIVISION

Approved by: *Jim W. Burns*

Title: *District Supervisor*

Approval Date: *JUL 27 2003*

Expiration Date: *JUL 27 2004*

Conditions of Approval:

Attached

NOTIFY OCD SPUD & TIME
TO WITNESS 9 5/8" CASING

DISTRICT I
P.O. Box 1980, Hobbs, NM 88241-1980

DISTRICT II
P.O. Drawer DD, Artesia, NM 88211-0719

DISTRICT III
1000 Rio Brazos Rd., Aztec, NM 87410

DISTRICT IV
P.O. BOX 2088, SANTA FE, N.M. 87504-2088

State of New Mexico
Energy, Minerals and Natural Resources Department

OIL CONSERVATION DIVISION

P.O. Box 2088
Santa Fe, New Mexico 87504-2088

Form C-102
Revised February 10, 1994
Submit to Appropriate District Office
State Lease - 4 Copies
Fee Lease - 3 Copies

WELL LOCATION AND ACREAGE DEDICATION PLAT

☐ AMENDED REPORT

API Number	Pool Code	Pool Name
Property Code	Property Name IMPERIAL STOUT 11	Well Number 1
OGRID No. 24010	Operator Name V-F PETROLEUM, INC.	Elevation 3306'

Surface Location

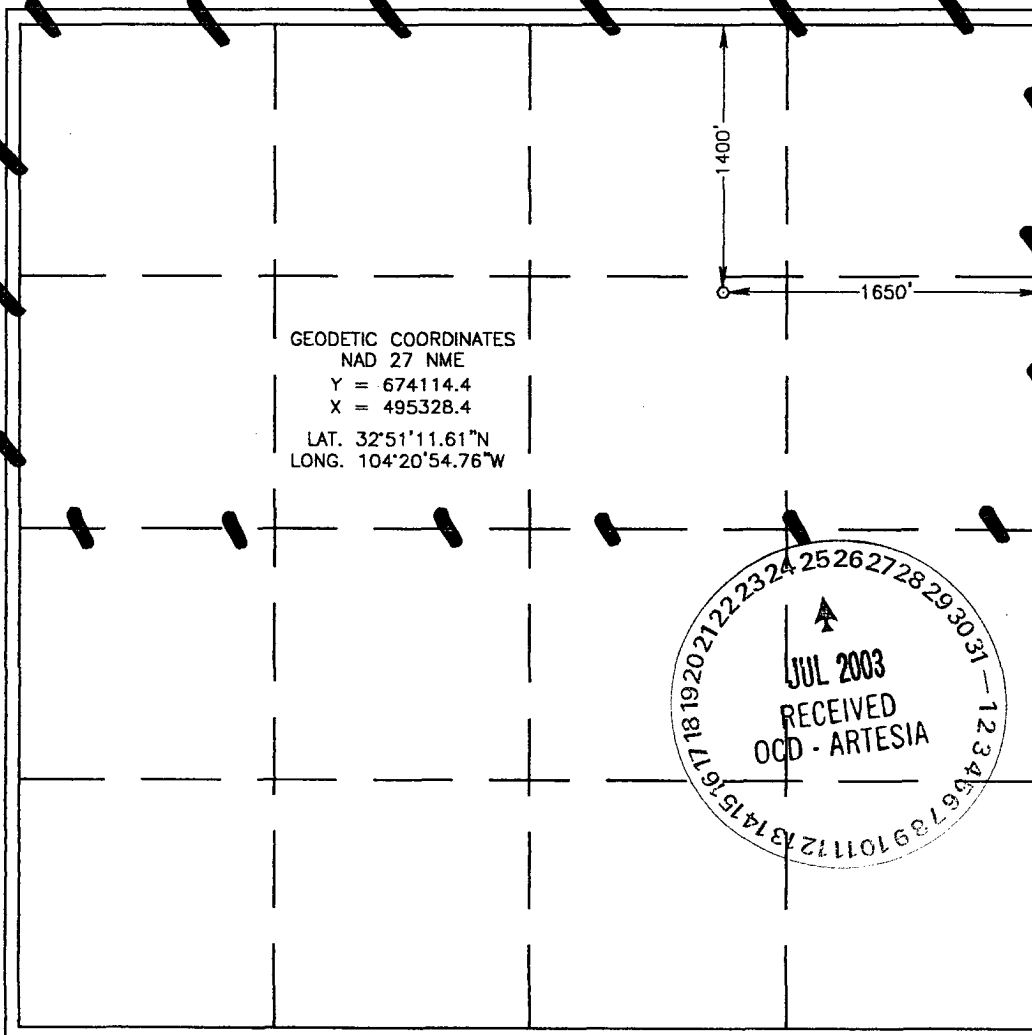
UL or lot No. G	Section 11	Township 17-S	Range 26-E	Lot Idn	Feet from the 1400	North/South line NORTH	Feet from the 1650	East/West line EAST	County EDDY
--------------------	---------------	------------------	---------------	---------	-----------------------	---------------------------	-----------------------	------------------------	----------------

Bottom Hole Location If Different From Surface

UL or lot No.	Section	Township	Range	Lot Idn	Feet from the	North/South line	Feet from the	East/West line	County
---------------	---------	----------	-------	---------	---------------	------------------	---------------	----------------	--------

Dedicated Acres 320 N/2	Joint or Infill N	Consolidation Code	Order No.
----------------------------	----------------------	--------------------	-----------

NO ALLOWABLE WILL BE ASSIGNED TO THIS COMPLETION UNTIL ALL INTERESTS HAVE BEEN CONSOLIDATED
OR A NON-STANDARD UNIT HAS BEEN APPROVED BY THE DIVISION



OPERATOR CERTIFICATION

I hereby certify the the information
contained herein is true and complete to the
best of my knowledge and belief.

Larry Brazile
Signature

Larry Brazile
Printed Name
Petroleum Engineer

Title
07/23/03

Date

SURVEYOR CERTIFICATION

I hereby certify that the well location shown
on this plat was plotted from field notes of
actual surveys made by me or under my
supervision, and that the same is true and
correct to the best of my belief.

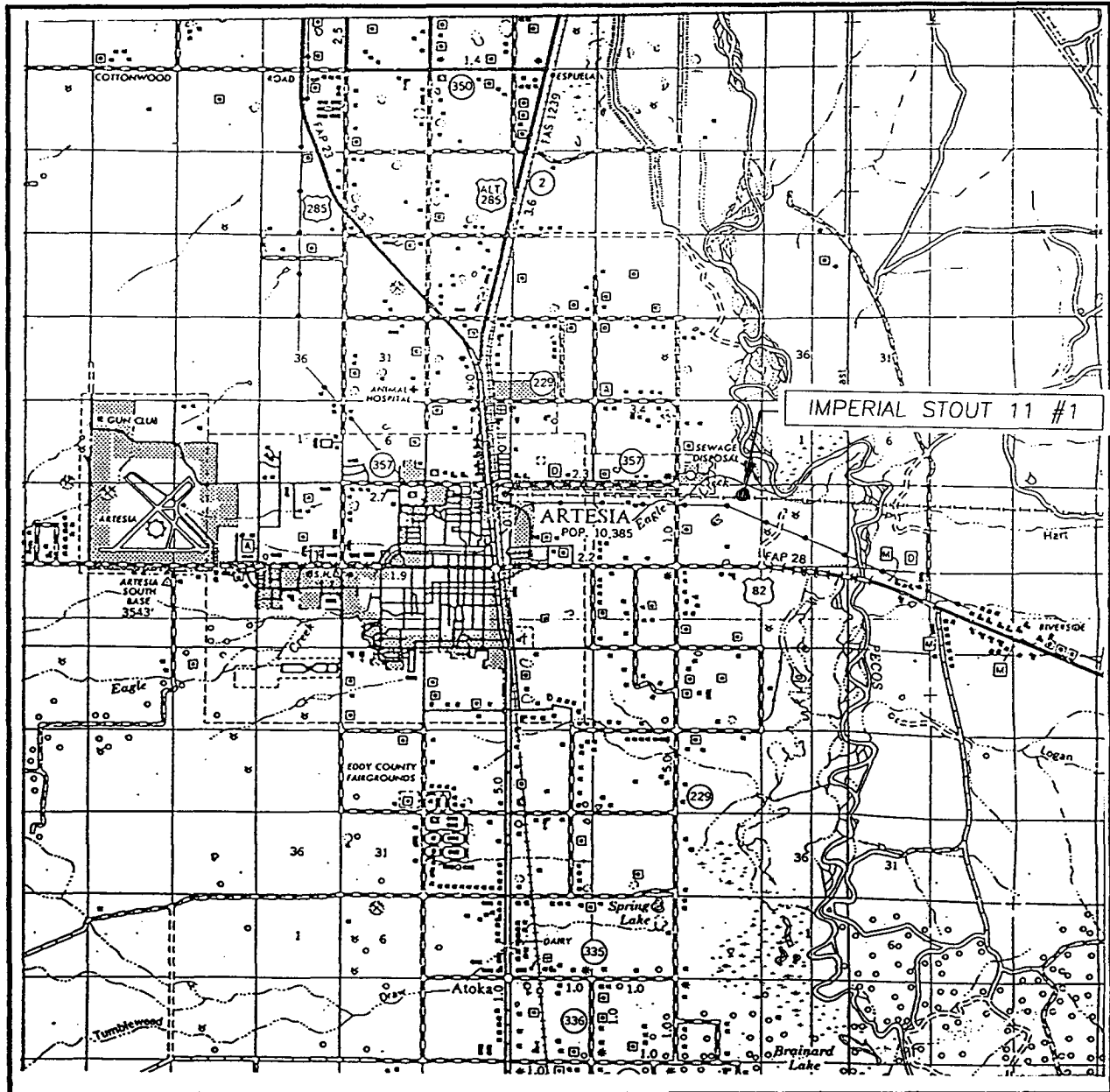
JULY 17, 2003

Date Surveyed
Signature & Seal of
Professional Surveyor

Ronald J. Eidson
03.11.0751

Certificate No. RONALD J. EIDSON 3239
GARY EIDSON 12841

VICINITY MAP



SCALE: 1" = 2 MILES

SEC. 11 TWP. 17-S RGE. 26-E

SURVEY N.M.P.M.

COUNTY EDDY

DESCRIPTION 1400' FNL & 1650' FEL

ELEVATION 3306'

OPERATOR V-F PETROLEUM, INC.

LEASE IMPERIAL STOUT 11

JOHN WEST SURVEYING
HOBBS, NEW MEXICO
(505) 393-3117

V-F Petroleum Inc.
Imperial Stout 11 #1

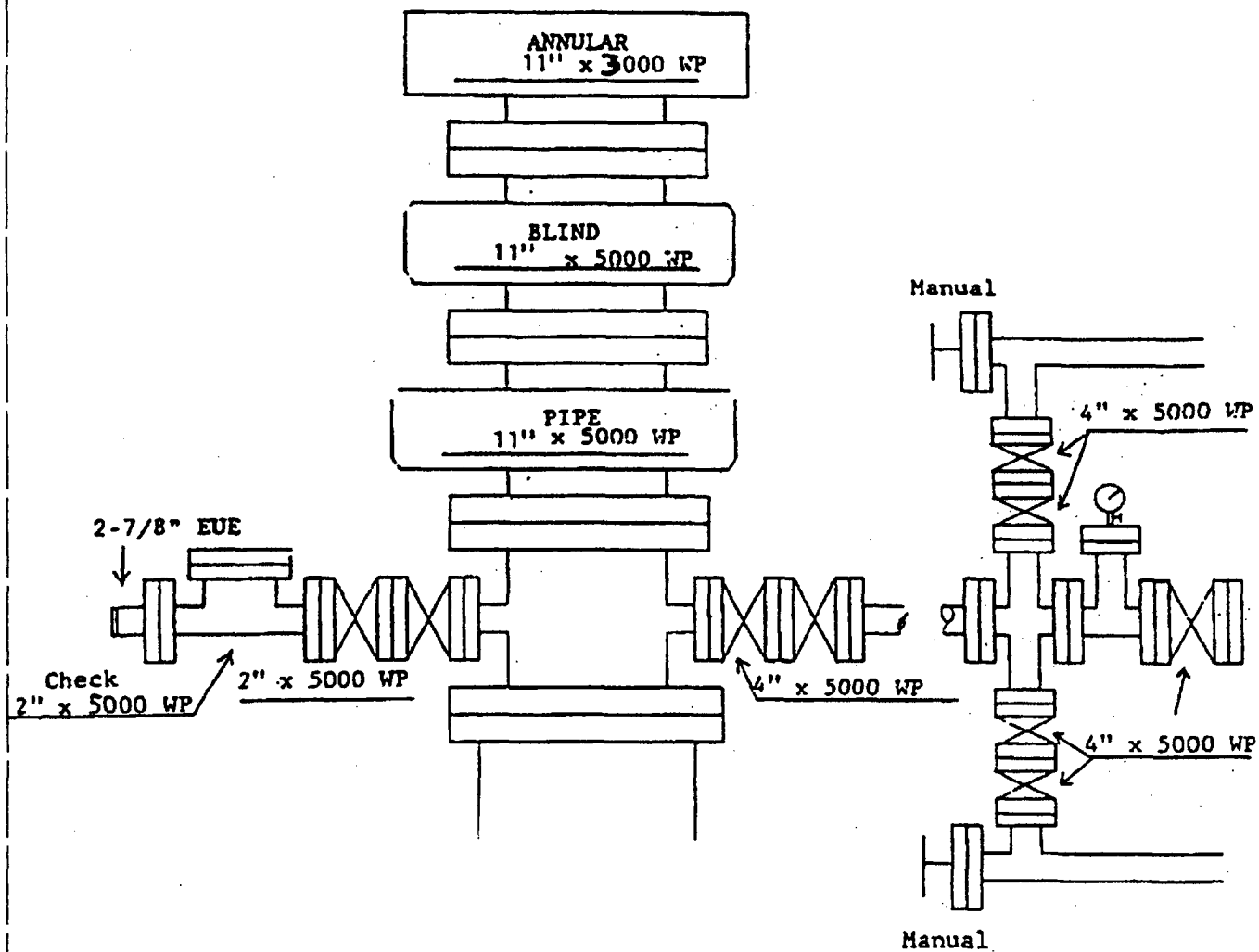


Exhibit 1