

**Guye, Gerry, EMNRD**

**To:** jerrys@mackenergycorp.com

**Subject:** New Mexico E O St #1

Jerry

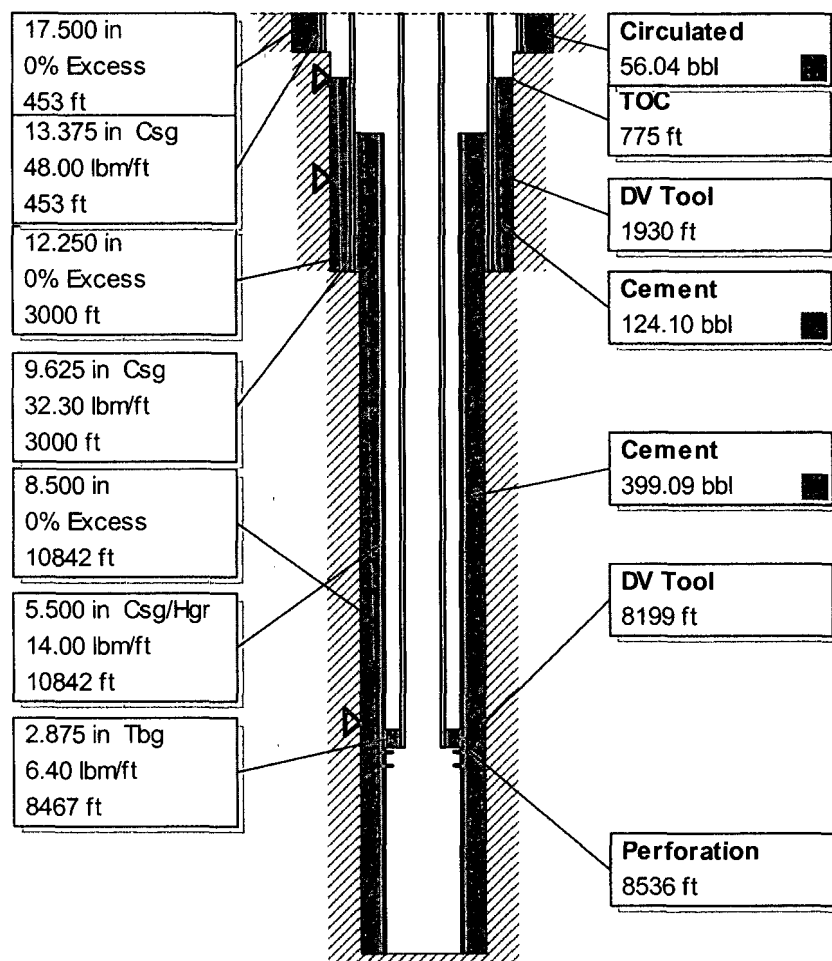
I am referencing our fonecon today regarding the above well. We discussed the following points:

1. The 13 3/8 casing was cemented to the surface.
  2. The 9 5/8 casing became the production casing when 1300' +/- of the 5 1/2 production casing was pulled.
  3. The 9 5/8 casing head is now the production casing head.
  4. The top of cement on the 9 5/8 is 775' which poses no problem since leaks can be determined through MIT.
- Bradenhead tests in the future will consist of monitoring injection pressure and possible tubing leaks.

*Gerry Guye*  
*Deputy Field Inspector*  
*District 2 - Artesia*

6/7/2006

**New Mexico EO St #1**  
**COG Oper**



**i-Handbook\*** - \*a mark of Schlumberger