

DISTRICT I
1825 N. FRENCH DR., HOBBS, NM 88240

DISTRICT II
1301 W. GRAND AVENUE, ARTESIA, NM 88210

DISTRICT III
1000 Rio Brazos Rd., Aztec, NM 87410

DISTRICT IV
1220 S. ST. FRANCIS DR., SANTA FE, NM 87505

State of New Mexico
Energy, Minerals and Natural Resources Department

OIL CONSERVATION DIVISION
1220 SOUTH ST. FRANCIS DR.
Santa Fe, New Mexico 87505

RECEIVED

JUN - 1 2006

Form C-102

Revised JUNE 10, 2003

Submit to Appropriate District Office

State Lease - 4 Copies

Fee Lease - 3 Copies

WELL LOCATION AND ACREAGE DEDICATION PLAT

☐ AMENDED REPORT

API Number 30-015-34455	Pool Code 73960	Pool Name South Carlsbad; Morrow (Prorated Gas)
Property Code 300595	Property Name FORNI	Well Number 5
OGRID No. 162683	Operator Name Cimarex Energy Co. of Colorado	Elevation 3079'

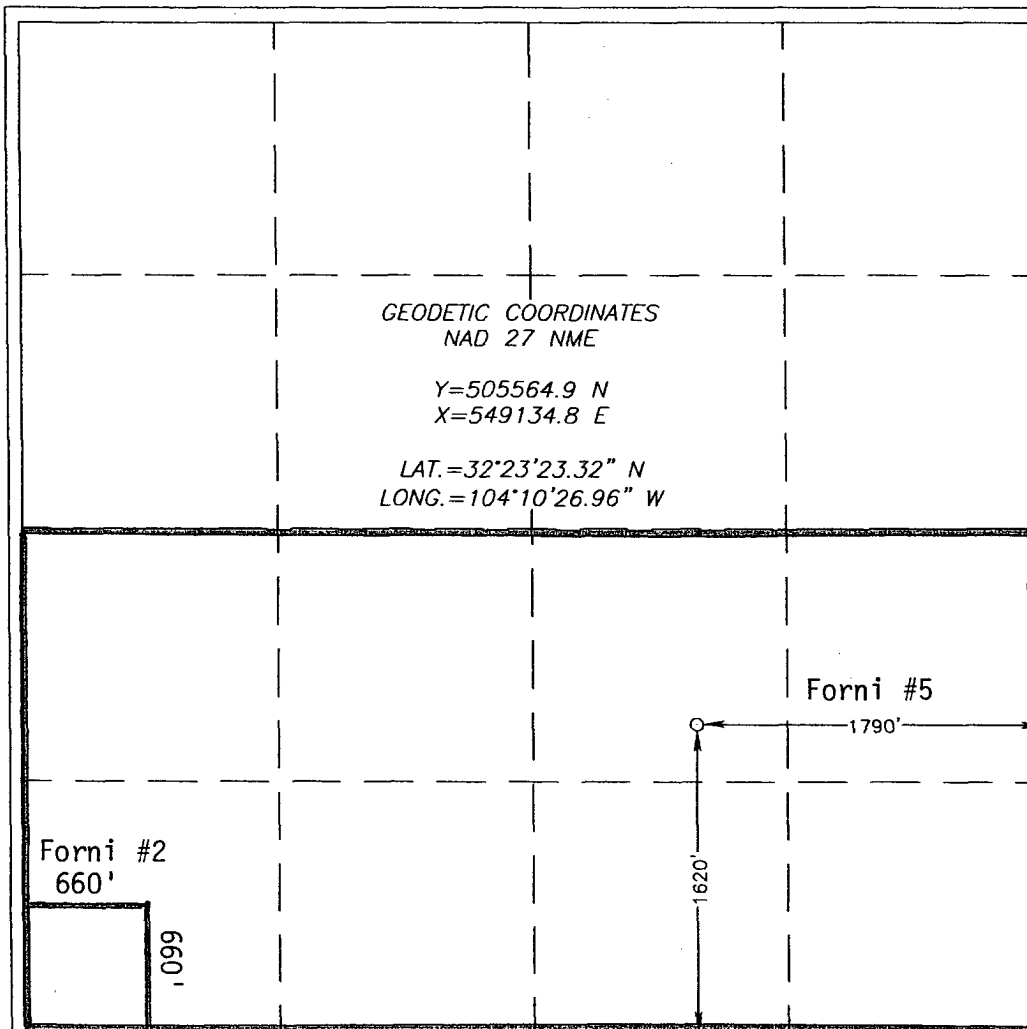
Surface Location

UL or lot No. J	Section 15	Township 22-S	Range 27-E	Lot Idn	Feet from the 1620	North/South line SOUTH	Feet from the 1790	East/West line EAST	County EDDY
--------------------	---------------	------------------	---------------	---------	-----------------------	---------------------------	-----------------------	------------------------	----------------

Bottom Hole Location If Different From Surface

UL or lot No.	Section	Township	Range	Lot Idn	Feet from the	North/South line	Feet from the	East/West line	County
Dedicated Acres 320	Joint or Infill Y	Consolidation Code	Order No. DHC-3671						

NO ALLOWABLE WILL BE ASSIGNED TO THIS COMPLETION UNTIL ALL INTERESTS HAVE BEEN CONSOLIDATED
OR A NON-STANDARD UNIT HAS BEEN APPROVED BY THE DIVISION



OPERATOR CERTIFICATION

I hereby certify the the information
contained herein is true and complete to the
best of my knowledge and belief.

Zeno Farris

Signature
Zeno Farris

Printed Name
Mgr Operations Admin

Title
May 22, 2006

Date

SURVEYOR CERTIFICATION

I hereby certify that the well location shown
on this plat was plotted from field notes of
actual surveys made by me or under my
supervision, and that the same is true and
correct to the best of my belief.

NOVEMBER 30, 2005

Date Surveyed
Signature & Seal of
Professional Surveyor

Ronald J. Edson 12/05/05
05.11.1750

Certificate No. RONALD J. EDSON 3239
GARY EDSON 12641