

## DISTRICT I

1625 N. French Dr., Hobbs, NM 88240

## DISTRICT II

811 South First, Artesia, NM 88210

## DISTRICT III

1000 Rio Brazos Rd., Aztec, NM 87410

## DISTRICT IV

2040 South Pacheco, Santa Fe, NM 87505

## State of New Mexico

Energy, Minerals and Natural Resources Department

Form C-102

Revised March 17, 1999

Submit to Appropriate District Office

State Lease - 4 Copies

Fee Lease - 3 Copies

## OIL CONSERVATION DIVISION

2040 South Pacheco

Santa Fe, New Mexico 87504-2088

☐ AMENDED REPORT

## WELL LOCATION AND ACREAGE DEDICATION PLAT

API Number 30-015-33915	Pool Code 47545	Pool Name NASH DRAW (DELAWARE) Bone Spring / Alaskan Sand
Property Code 001796	Property Name POKER LAKE UNIT	Well Number 212
OGRID No. 001801	Operator Name BASS ENTERPRISES PRODUCTION COMPANY	Elevation 3166'

## Surface Location

UL or lot No.	Section	Township	Range	Lot Idn	Feet from the	North/South line	Feet from the	East/West line	County
0	18	24 S	30 E		660	SOUTH	1980	EAST	EDDY

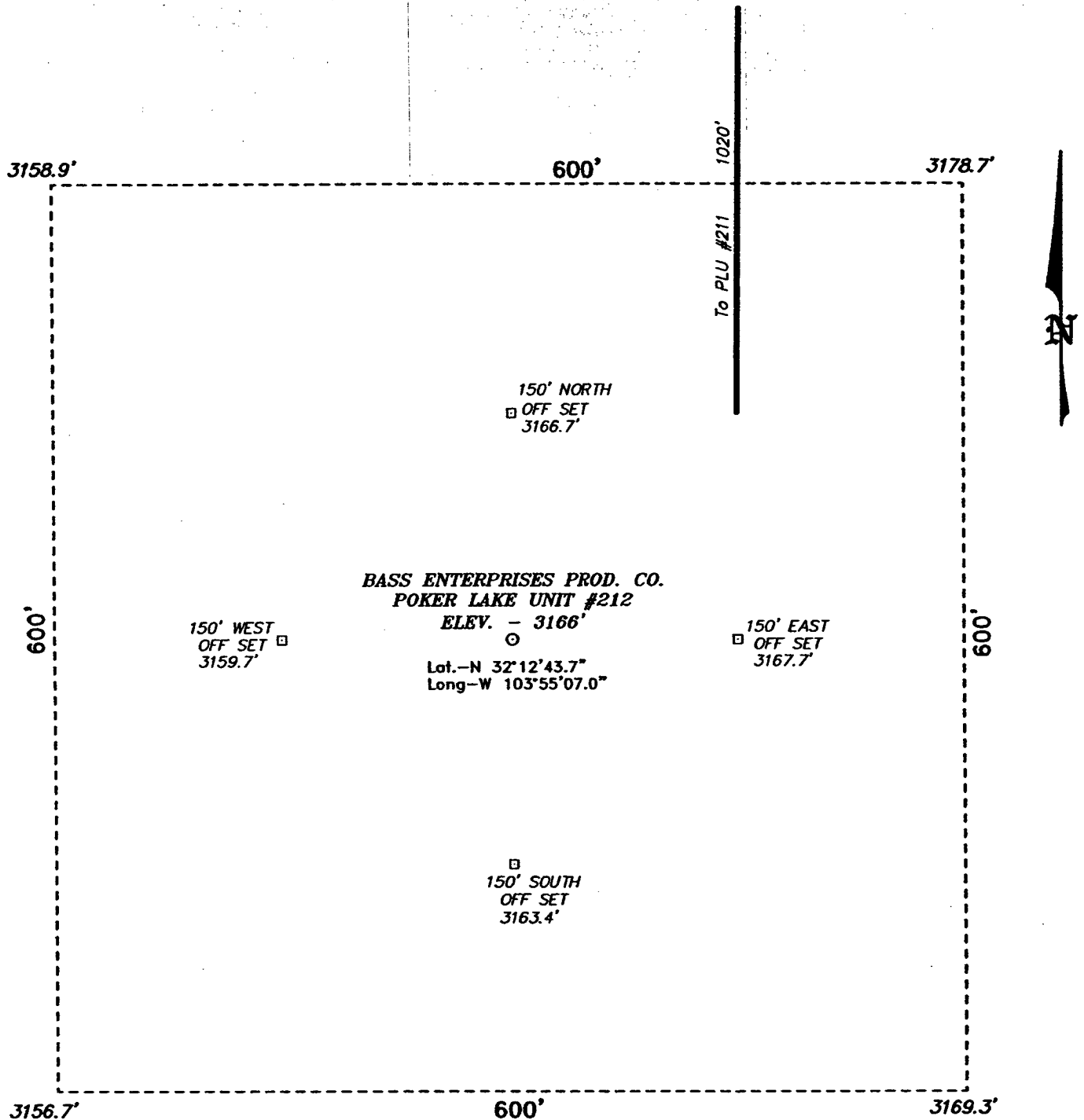
## Bottom Hole Location If Different From Surface

UL or lot No.	Section	Township	Range	Lot Idn	Feet from the	North/South line	Feet from the	East/West line	County
Dedicated Acres 40	Joint or Infill N	Consolidation Code	Order No.						

NO ALLOWABLE WILL BE ASSIGNED TO THIS COMPLETION UNTIL ALL INTERESTS HAVE BEEN CONSOLIDATED  
OR A NON-STANDARD UNIT HAS BEEN APPROVED BY THE DIVISION

<b>RECEIVED</b> <b>DEC 16 2005</b> <b>OCU-ARTESIA</b>				<b>OPERATOR CERTIFICATION</b> I hereby certify the the information contained herein is true and complete to the best of my knowledge and belief. <u>William R. Dannels</u> Signature W.R. DANNELS Printed Name DIVISION DRILLING SUPT. Title <u>12-6-04</u> Date	
LOT 1 - 40.80 AC.	40.83 AC.	40.82 AC.	40.83 AC.		
LOT 2 - 40.85 AC.	40.81 AC.	40.79 AC. 40.77 AC.	40.79 AC.		
LOT 3 - 40.80 AC.	40.80 AC.	LAT - N32°12'43.7" LONG - W103°55'07.0"	40.72 AC.		
LOT 4 - 40.84 AC.	40.77 AC.		40.69 AC.	<b>SURVEYOR CERTIFICATION</b> I hereby certify that the well location shown on this plat was plotted from field notes of actual surveys made by me or under my supervision and that the same is true and correct to the best of my belief. <div style="text-align: center;"> </div> Date Surveyed Signature & Seal of Professional Surveyor Certificate No. 4139 Gary L. Jones 7977 <b>Basin Surveys</b>	

SECTION 18, TOWNSHIP 24 SOUTH, RANGE 30 EAST, N.M.P.M.,  
EDDY COUNTY, NEW MEXICO.



BASS ENTERPRISES PROD. CO.  
POKER LAKE UNIT #212

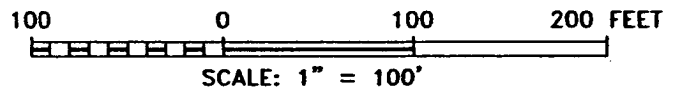
ELEV. - 3166'

Lat.-N 32°12'43.7"  
Long-W 103°55'07.0"

150' WEST  
OFF SET □  
3159.7'

150' EAST  
OFF SET □  
3167.7'

150' SOUTH  
OFF SET □  
3163.4'



DIRECTIONS TO LOCATION:

FROM THE JUNCTION OF CO. RD. 746A AND CO. RD. 748, GO EASTERLY ON CO. RD. 746A FOR APPROX. 1.0 MILE AND NORTHERLY FOR APPROX. 0.75 MILE TO PROPOSED LEASE ROAD TO THE PLU #213 AND THE PLU #212.

**BASS ENTERPRISES PRODUCTION CO.**

REF: POKER LAKE UNIT No. 212 / Well Pad Topo

THE POKER LAKE UNIT No. 212 LOCATED 660' FROM  
THE SOUTH LINE AND 1980' FROM THE EAST LINE OF  
SECTION 18, TOWNSHIP 24 SOUTH, RANGE 30 EAST,  
N.M.P.M., EDDY COUNTY, NEW MEXICO.

**BASIN SURVEYS** P.O. BOX 1786 - HOBBS, NEW MEXICO

W.O. Number: 4139

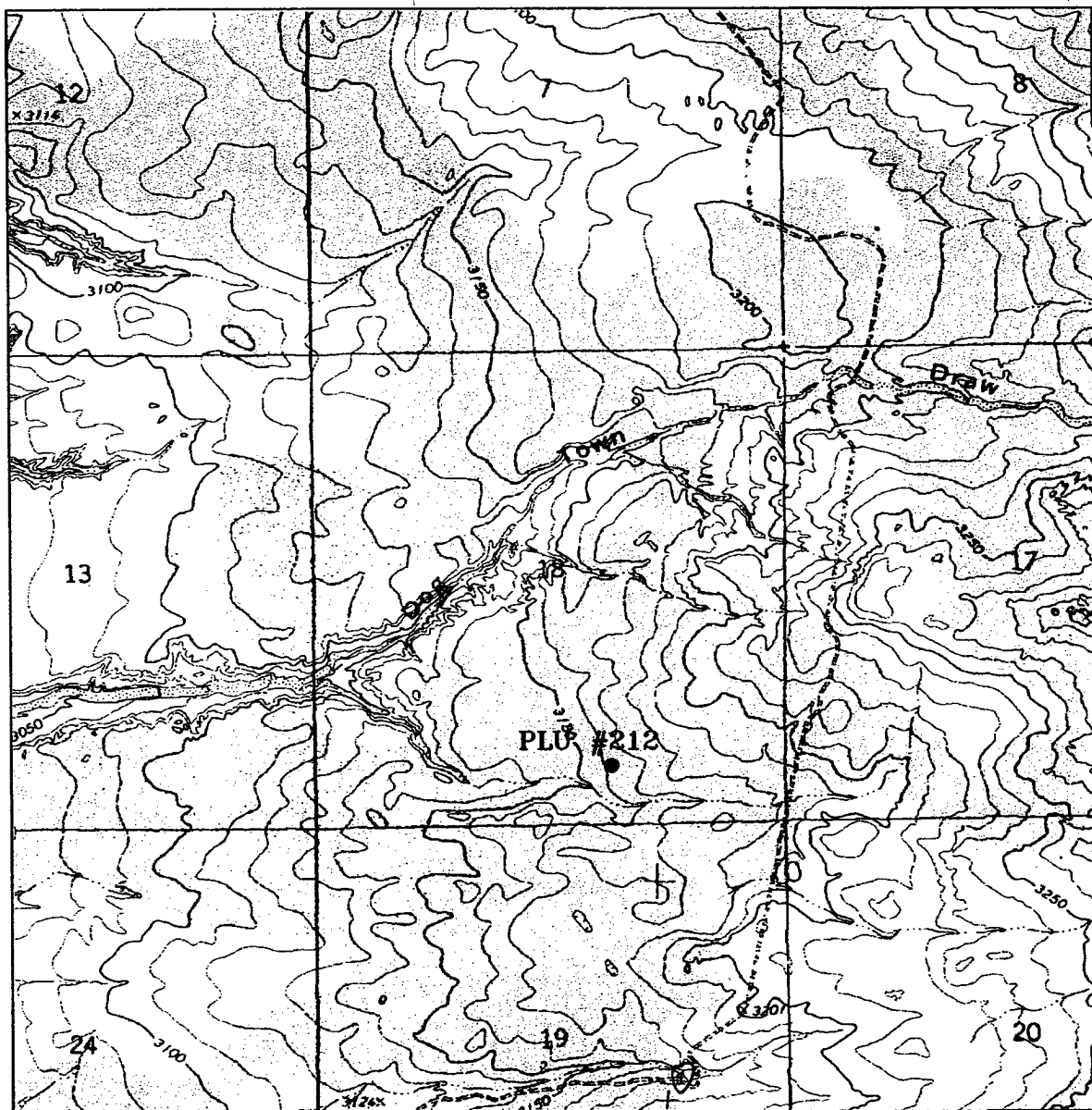
Drawn By: K. GOAD

Date: 04-23-2004

Disk: KJG CD#7 - 4139A.DWG

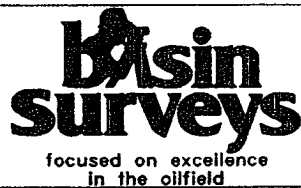
Survey Date: 04-15-2004

Sheet 1 of 1 Sheets



# POKER LAKE UNIT #212

Located at 660' FSL and 1980' FEL  
 Section 18, Township 24 South, Range 30 East,  
 N.M.P.M., Eddy County, New Mexico.



P.O. Box 1786  
 1120 N. West County Rd.  
 Hobbs, New Mexico 88241  
 (505) 393-7316 - Office  
 (505) 392-3074 - Fax  
 basinsurveys.com

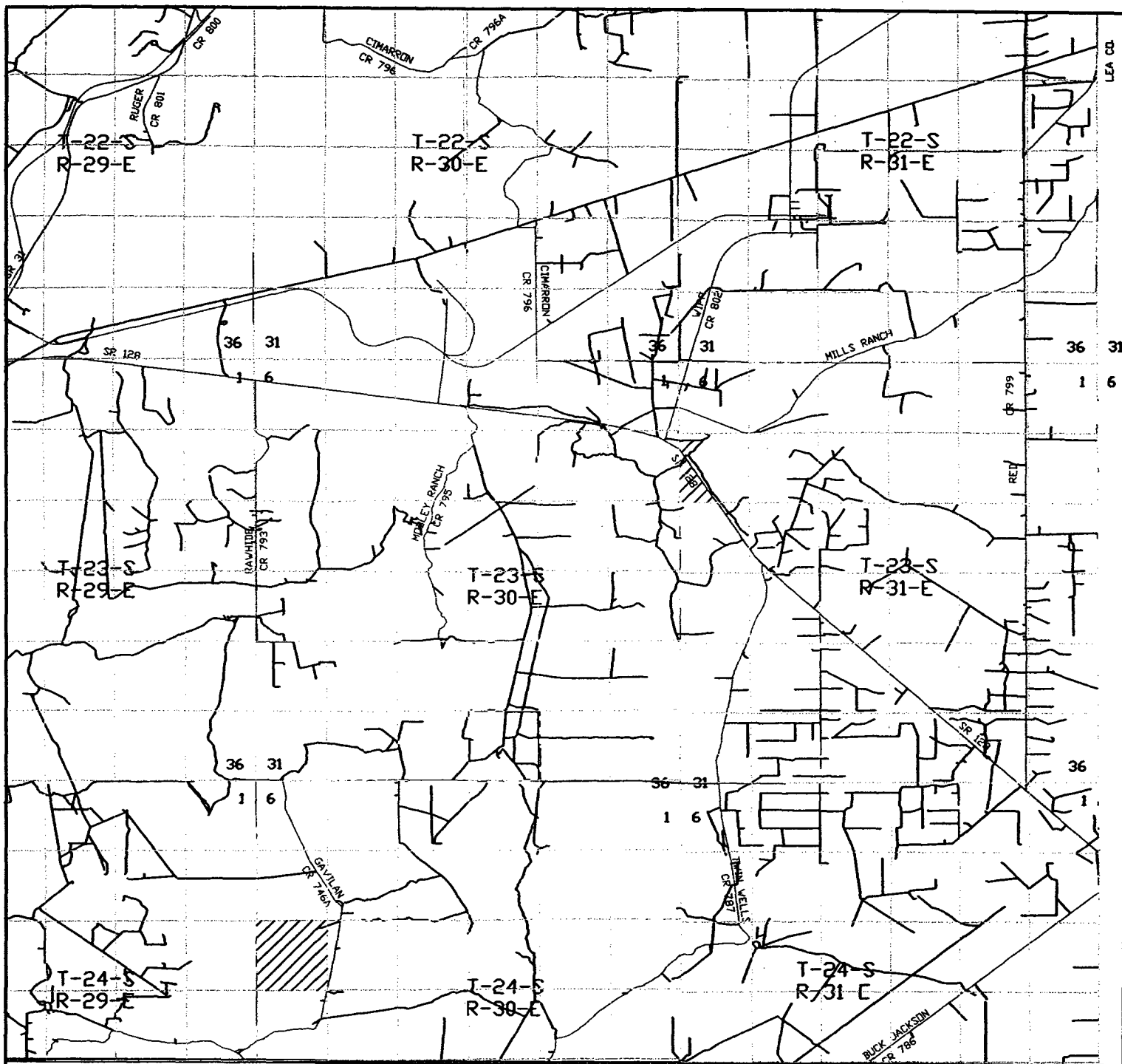
W.O. Number: 4139AA - KJG #7

Survey Date: 04-15-2004

Scale: 1" = 2000'

Date: 04-23-2004

**BASS ENTERPRISES  
 PRODUCTION CO.**



**POKER LAKE UNIT #212**  
 Located at 660' FSL and 1980' FEL  
 Section 18, Township 24 South, Range 30 East,  
 N.M.P.M., Eddy County, New Mexico.

**basin**  
**surveys**  
 focused on excellence  
 in the oilfield

P.O. Box 1786  
 1120 N. West County Rd.  
 Hobbs, New Mexico 88241  
 (505) 393-7316 - Office  
 (505) 392-3074 - Fax  
 basinsurveys.com

W.O. Number: 4139AA - KJG #7

Survey Date: 04-15-2004

Scale: 1" = 2 miles

Date: 04-23-2004

**BASS ENTERPRISES**  
**PRODUCTION CO.**