

DISTRICT I
1625 N. FRENCH DR., HOBBS, NM 88240

State of New Mexico
Energy, Minerals and Natural Resources Department

RECEIVED

JUN 14 2006

Form C-102

DISTRICT II
1301 W. GRAND AVENUE, ARTESIA, NM 88210

OIL CONSERVATION DIVISION

1220 SOUTH ST. FRANCIS DR.
Santa Fe, New Mexico 87505

OCU-ARTESIA

Revised October 12, 2005
Submit to Appropriate District Office
State Lease - 4 Copies
Fee Lease - 3 Copies

DISTRICT III
1000 Rio Brazos Rd., Aztec, NM 87410

DISTRICT IV
1220 S. ST. FRANCIS DR., SANTA FE, NM 87505

WELL LOCATION AND ACREAGE DEDICATION PLAT



AMENDED REPORT

API Number 30-015-34933	Pool Code 97415	Pool Name FOUR MILE DRAW; WOLF CAMP
Property Code 35748	Property Name FUZZY STATE	Well Number 1
OGRID No. 013837	Operator Name MACK ENERGY CORPORATION	Elevation 4046'

Surface Location

UL or lot No.	Section	Township	Range	Lot Idn	Feet from the	North/South line	Feet from the	East/West line	County
0	31	18-S	23-E		660	SOUTH	1980	EAST	EDDY

Bottom Hole Location If Different From Surface

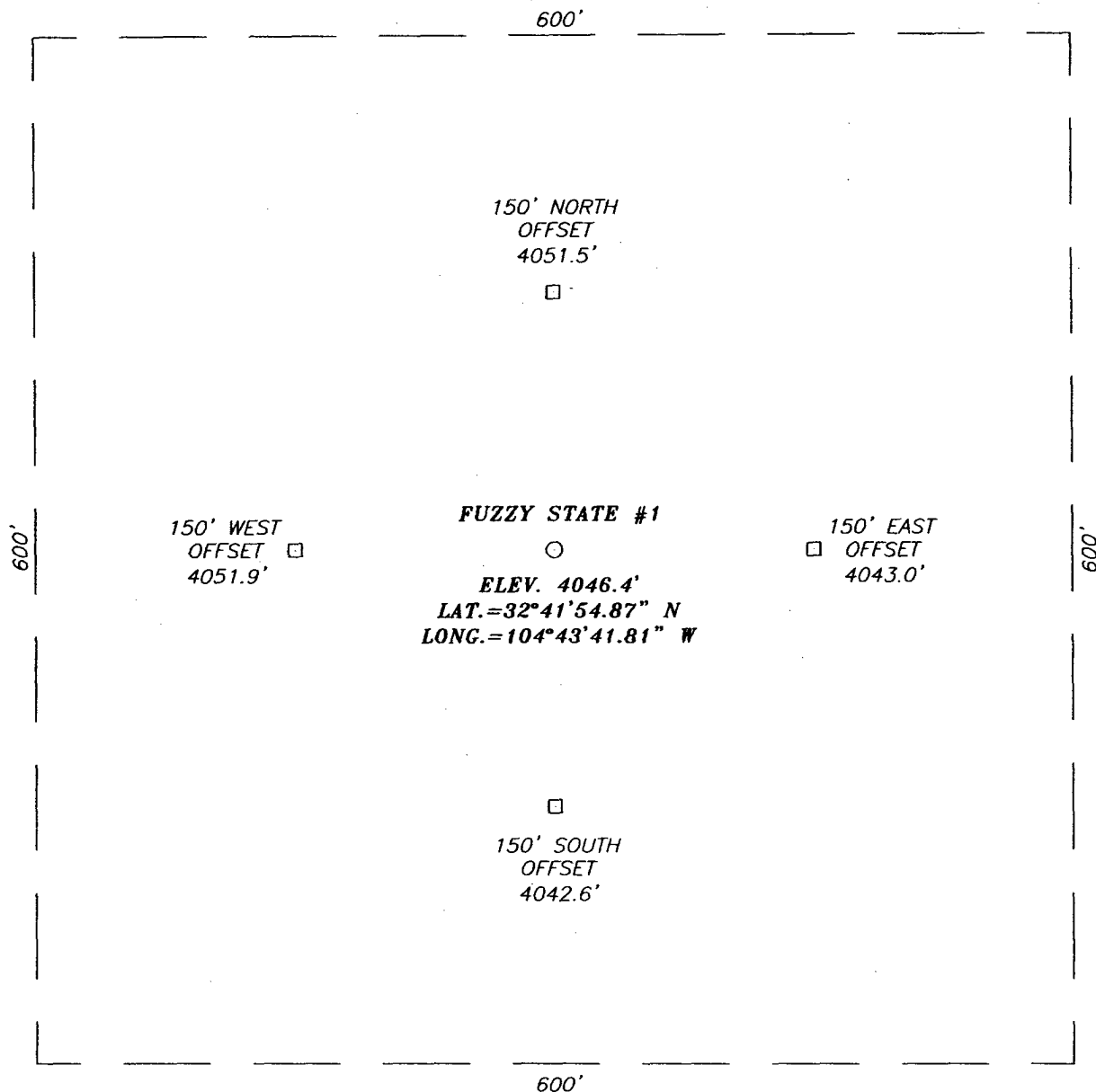
UL or lot No.	Section	Township	Range	Lot Idn	Feet from the	North/South line	Feet from the	East/West line	County
B	31	18-S	23-E		660	NORTH	1980	EAST	EDDY

Dedicated Acres 320	Joint or Infill	Consolidation Code	Order No.
------------------------	-----------------	--------------------	-----------

NO ALLOWABLE WILL BE ASSIGNED TO THIS COMPLETION UNTIL ALL INTERESTS HAVE BEEN CONSOLIDATED
OR A NON-STANDARD UNIT HAS BEEN APPROVED BY THE DIVISION

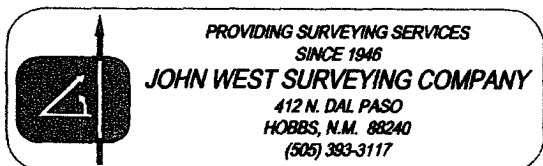
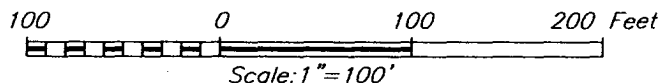
<p>LOT 1</p> <p>BOTTOM HOLE</p> <p>Y=622040.1 N X=378507.0 E</p> <p>GRID.AZ.=00°01'35" DIST.=3962.8'</p> <p>LOT 2</p> <p>LOT 3</p> <p>LOT 4</p> <p>GEODETIC COORDINATES NAD 27 NME</p> <p>Y=618078.4 N X=378505.2 E</p> <p>LAT.=32°41'54.87" N LONG.=104°43'41.81" W</p>	<p>BH</p> <p>1980'</p> <p>660'</p> <p>Producing Area</p> <p>SL</p> <p>660'</p> <p>Project Area</p>	<p>OPERATOR CERTIFICATION</p> <p>I hereby certify that the information herein is true and complete to the best of my knowledge and belief, and that this organization either owns a working interest or unleased mineral interest in the land including the proposed bottom hole location or has a right to drill this well at this location pursuant to a contract with an owner of such mineral or working interest, or to a voluntary pooling agreement or a compulsory pooling order heretofore entered by the division.</p> <p><i>Jerry W. Sherrell</i> 6/13/06 Signature Date</p> <p>Jerry W. Sherrell Printed Name</p> <p>SURVEYOR CERTIFICATION</p> <p>I hereby certify that the well location shown on this plat was plotted from field notes of actual surveys made by me or under my supervision, and that the same is true and correct to the best of my belief.</p> <p>JUNE 09, 2006</p> <p>Date Surveyed MR</p> <p>Signature & Seal of Professional Surveyor</p> <p><i>GARY EIDSON</i> 6/12/06 06.11.0966</p> <p>Certificate No. GARY EIDSON 12841</p>
--	--	--

SECTION 31, TOWNSHIP 18 SOUTH, RANGE 23 EAST, N.M.P.M.,
 EDDY COUNTY, NEW MEXICO



DIRECTIONS TO LOCATION

FROM THE INTERSECTION OF U.S. HWY. #82 AND
 CO. RD. #12 (ARMSTRONG RD.), IN THE TOWN GO
 SOUTH ON CO. RD. #12 APPROX. 7.6 MILES.
 TURN LEFT AND GO EAST APPROX. 0.1 MILE. THIS
 LOCATION IS APPROX. 600 FEET SOUTH.

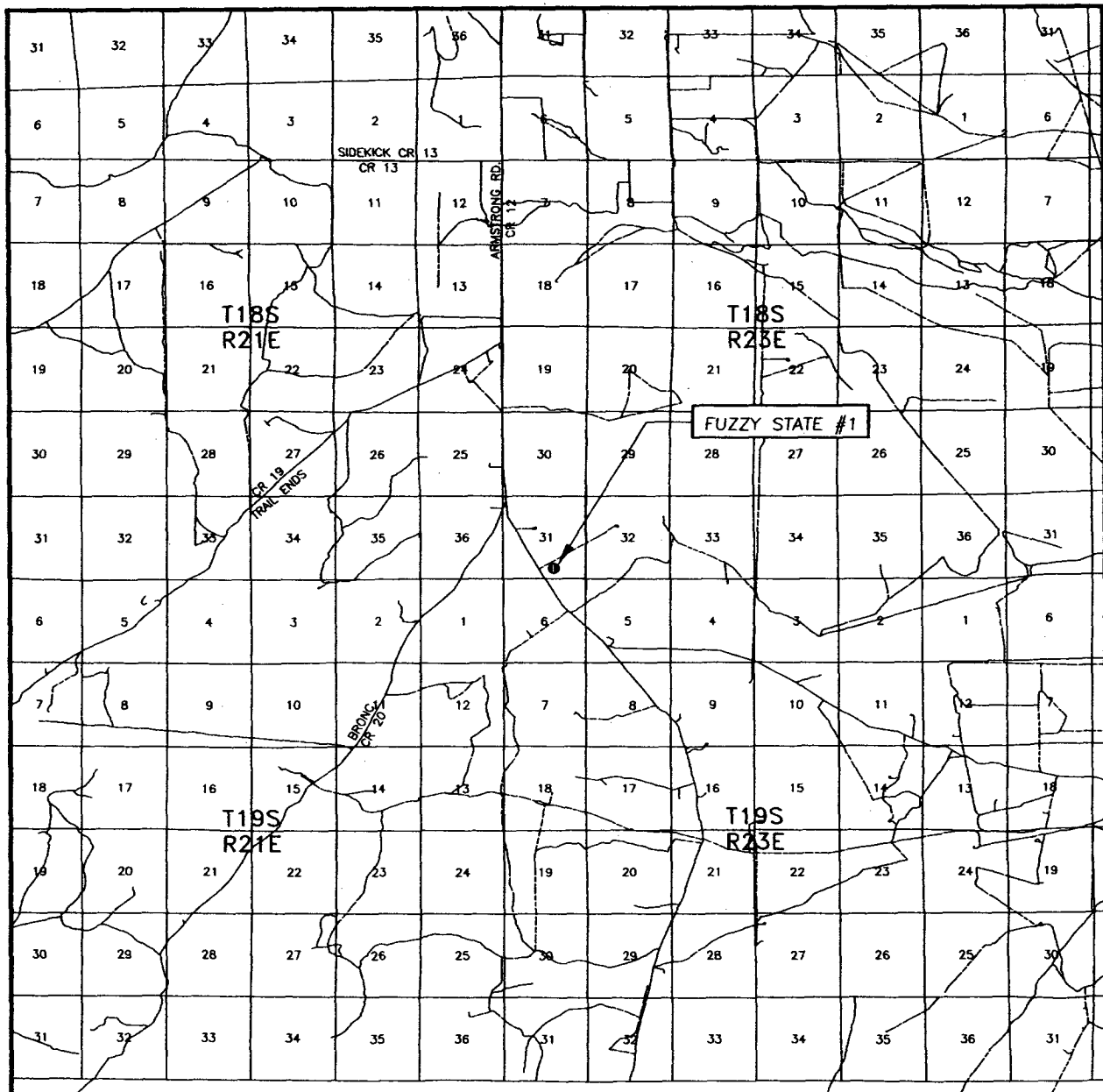


MACK ENERGY CORPORATION

FUZZY STATE #1
 LOCATED 660 FEET FROM THE SOUTH LINE
 AND 1980 FEET FROM THE EAST LINE OF SECTION 31,
 TOWNSHIP 18 SOUTH, RANGE 23 EAST, N.M.P.M.,
 EDDY COUNTY, NEW MEXICO.

Survey Date: 06/09/06	Sheet 1 of 1 Sheets
W.O. Number: 06.11.0966	Dr By: M.R.
Date: 06/12/06	Disk: CD#6
06110966	Scale: 1"=100'

VICINITY MAP



SCALE: 1" = 2 MILES

SEC. 31 TWP. 18-S RGE. 23-E

SURVEY N.M.P.M.

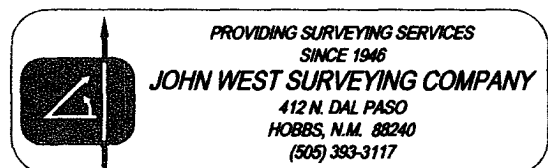
COUNTY EDDY STATE NEW MEXICO

DESCRIPTION 660' FSL & 1980' FEL

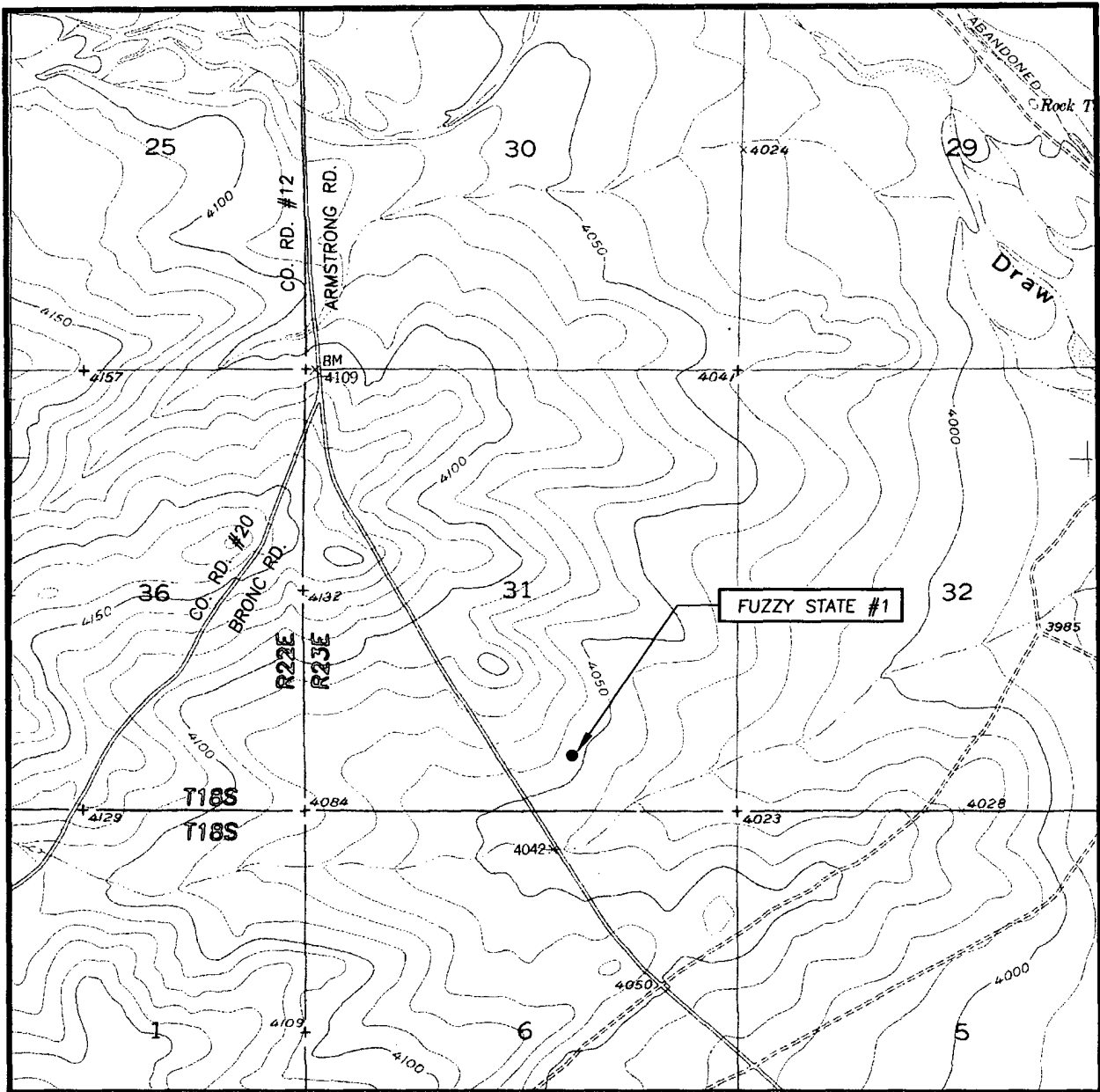
ELEVATION 4046'

OPERATOR MACK ENERGY CORPORATION

LEASE FUZZY STATE



LOCATION VERIFICATION MAP



SCALE: 1" = 2000'

CONTOUR INTERVAL:
ANTELOPE SINK, N.M. - 10'

SEC. 31 TWP. 18-S RGE. 23-E

SURVEY N.M.P.M.

COUNTY EDDY STATE NEW MEXICO

DESCRIPTION 660' FSL & 1980' FEL

ELEVATION 4046'

OPERATOR MACK ENERGY CORPORATION

LEASE FUZZY STATE

U.S.G.S. TOPOGRAPHIC MAP
ANTELOPE SINK, N.M.

