

DISTRICT I
P.O. Box 1980, Hobbs, NM 88240

DISTRICT II
P.O. Drawer DD, Artesia, NM 88210

DISTRICT III
1000 Rio Brazos Rd., Aztec, NM 87410

OIL CONSERVATION DIVISION

2040 Pacheco St.
Santa Fe, NM 87505

WELL API NO.

30-015-32636

Indicate Type of Lease

STATE ☐

FEE ☐

State Oil & Gas Lease No.

Lease Name or Unit Agreement Name

Big Walt 2 State

Well No.

#4

Pool name or Wildcat

Indian Basin; Upper Penn, Associated

SUNDRY NOTICES AND REPORTS ON WELLS

(DO NOT USE THIS FORM FOR PROPOSALS TO DRILL OR TO DEEPEN OR PLUG BACK TO A
DIFFERENT RESERVOIR. USE "APPLICATION FOR PERMIT"
(FORM C-101) FOR SUCH PROPOSALS.)

Type of Well:

OIL
WELL ☒

GAS
WELL ☐

OTHER

Name of Operator

Nearburg Producing Company

Address of Operator

3300 N A St., Bldg 2, Suite 120, Midland, TX 79705

Well Location

Unit Letter 4 : 660 Feet From The North Line and 990 Feet From The West Line

Section 2 Township 22S Range 24E NMPM Eddy County

Elevation (Show whether DF, RKB, RT, GR, etc.)

GR-3874'

11

Check Appropriate Box to Indicate Nature of Notice, Report, or Other Data

NOTICE OF INTENTION TO:

PERFORM REMEDIAL WORK ☐

PLUG AND ABANDON ☐

TEMPORARILY ABANDON ☐

CHANGE PLANS ☒

PULL OR ALTER CASING ☐

OTHER: ☐

SUBSEQUENT REPORT OF:

REMEDIAL WORK ☐

ALTERING CASING ☐

COMMENCE DRILLING OPNS. ☐

PLUG AND ANBANDONMENT ☐

CASING TEST AND CEMENT JOB ☐

OTHER: ☐

Describe Proposed or Completed Operations (Clearly state all pertinent details, and give pertinent dates, including estimated date of starting any proposed work) SEE RULE 1103.

Nearburg would like to move subject well from:

660' FNL and 990' FWL, Sec 2, 22S, 24E

to:

660' FNL and 840' FWL, Sec 2, 22S, 24E.

C102 attached.



I hereby certify that the information above is true and complete to the best of my knowledge and belief.

SIGNATURE

TITLE Drilling Manager

DATE 08-25-2003

TYPE OR PRINT NAME H. R. Willis

TELEPHONE NO. 432/686-8235 x 223

(This space for State Use)

ORIGINAL SIGNED BY TIM W. GUM
DISTRICT II SUPERVISOR

AUG 25 2003

APPROVED BY

TITLE

DATE

CONDITIONS OF APPROVAL, IF ANY:

DISTRICT I
P.O. Box 1980, Hobbs, NM 88241-1980

State of New Mexico

Energy, Minerals and Natural Resources Department

Form C-102

Revised February 10, 1994

Submit to Appropriate District Office

State Lease - 4 Copies

Fee Lease - 3 Copies

DISTRICT II
P.O. Drawer DD, Artesia, NM 86211-0719

OIL CONSERVATION DIVISION

P.O. Box 2088

Santa Fe, New Mexico 87504-2088

DISTRICT III
1000 Rio Brazos Rd., Aztec, NM 87410

DISTRICT IV
P.O. BOX 2088, SANTA FE, N.M. 87504-2088

WELL LOCATION AND ACREAGE DEDICATION PLAT

☐ AMENDED REPORT

API Number 30-015-32636	Pool Code 33685	Pool Name INDIAN BASIN UPPER PENN ASS.
Property Code 13595	Property Name BIG WALT 2 STATE	Well Number 4
OGRID No. 015742	Operator Name NEARBURG PRODUCING COMPANY	Elevation 3874'

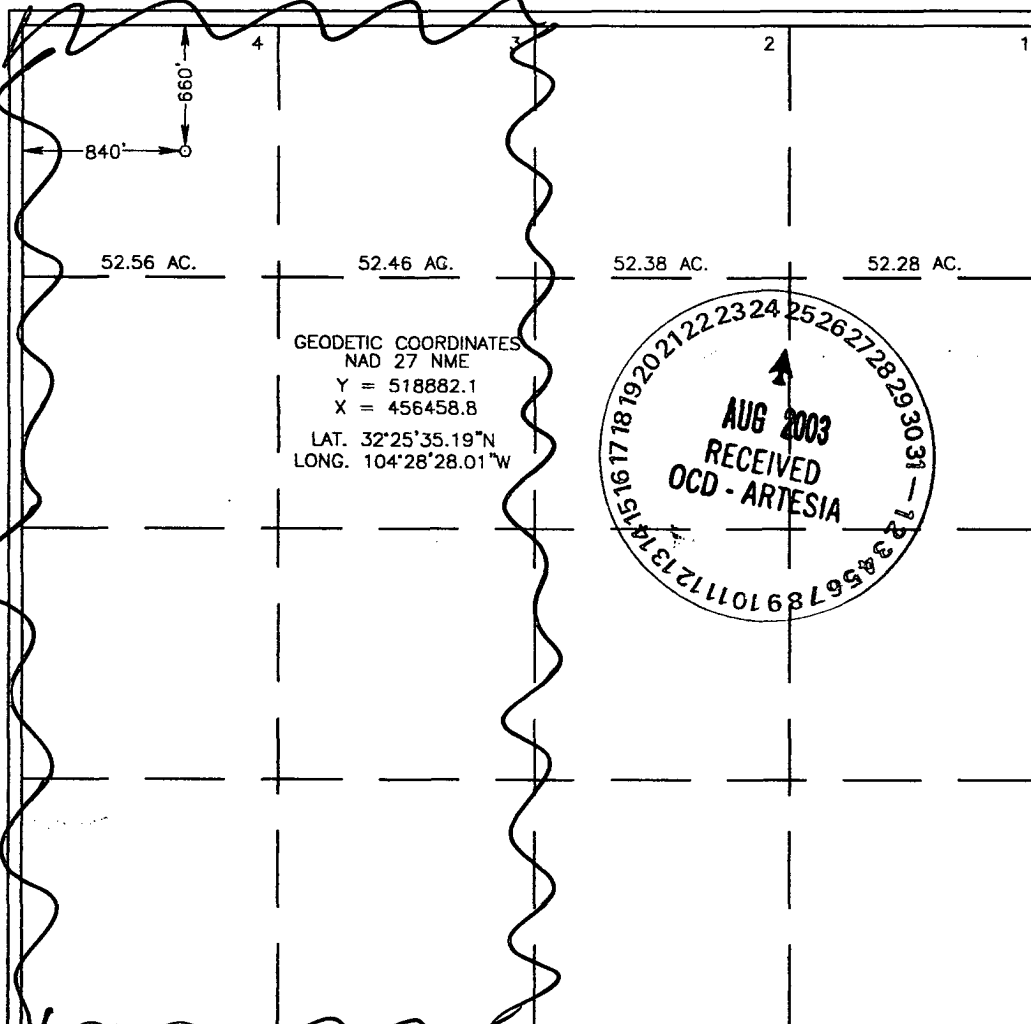
Surface Location

UL or lot No. 4	Section 2	Township 22-S	Range 24-E	Lot Idn	Feet from the 660	North/South line NORTH	Feet from the 840	East/West line WEST	County EDDY
---------------------------	---------------------	-------------------------	----------------------	---------	-----------------------------	----------------------------------	-----------------------------	-------------------------------	-----------------------

Bottom Hole Location If Different From Surface

UL or lot No.	Section	Township	Range	Lot Idn	Feet from the	North/South line	Feet from the	East/West line	County
Dedicated Acres 320	Joint or Infill 5	Consolidation Code	Order No.						

NO ALLOWABLE WILL BE ASSIGNED TO THIS COMPLETION UNTIL ALL INTERESTS HAVE BEEN CONSOLIDATED
OR A NON-STANDARD UNIT HAS BEEN APPROVED BY THE DIVISION



OPERATOR CERTIFICATION	
I hereby certify the the information contained herein is true and complete to the best of my knowledge and belief.	
Signature <i>[Signature]</i>	
Printed Name <i>H. W. Williams</i>	
Title <i>Drilling Manager</i>	
Date <i>8/25/03</i>	
SURVEYOR CERTIFICATION	
I hereby certify that the well location shown on this plat was plotted from field notes of actual surveys made by me or under my supervision, and that the same is true and correct to the best of my belief.	
AUGUST 22, 2003	
Date Surveyed	L.A.
Signature & Seal of Professional Surveyor <i>[Signature]</i>	
Certificate No. RONALD J. EDISON 3239	12641