

NEW MEXICO OIL CONSERVATION DIVISION  
SOUTHEAST NEW MEXICO PACKER LEAKAGE TEST

Revised June 9, 2003

30-015-10268

Operator Yates Petroleum Corporation Lease Marathon "AGI" St. Well No. 1  
Location Of Well: Unit A Section 33 Township T17S Range R24E County Eddy

	Name of Reservoir or Pool	Type of Prod. (Oil or Gas)	Method of Prod. (Flow Art. Lift)	Prod. Medium (Tbg. Or Cag.)	Choke Size
Upper Completion	Wolfcamp	Gas	Flow	CSG	
Lower Completion	Atoka Morrow	None	None	TBG	

**FLOW TEST NO. 1**

Both zones shut-in at (hour, date): 10/18/2006 8:10am

	Upper Completion	Lower Completion
Well opened at (hour, date): <u>10/19/2006 8:20am</u>		
Indicate by (X) the zone producing.....	XXX	
Pressure at beginning of test.....	382#	24#
Stabilized? (Yes or No).....	Yes	Yes
Maximum pressure during test.....	382#	24#
Minimum pressure during test.....	296#	20#
Pressure at conclusion of test.....	296#	20#
Pressure change during test (Maximum minus Minimum).....	86#	4#
Was pressure change an increase or a decrease?.....	Decrease	Decrease

Well closed at (hour, date): 10/20/2006 8:30am Total Time On Production 24 hours 10 minutes

Oil Production \_\_\_\_\_ Gas Production \_\_\_\_\_  
During Test: 0 bbls; Grav. \_\_\_\_\_; During Test 30.2 MCF; GOR \_\_\_\_\_

Remarks: Atoka Morrow is not hooked up, zone is not produced.

**FLOW TEST NO. 2**

Both zones shut-in at (hour, date): \_\_\_\_\_

	Upper Completion	Lower Completion
Well opened at (hour, date): _____		
Indicate by (X) the zone producing.....		
Pressure at beginning of test.....		
Stabilized? (Yes or No).....		
Maximum pressure during test.....		
Minimum pressure during test.....		
Pressure at conclusion of test.....		
Pressure change during test (Maximum minus Minimum).....		
Was pressure change an increase or a decrease?.....		

Well closed at (hour, date): \_\_\_\_\_ Total Time On Production \_\_\_\_\_

Oil Production \_\_\_\_\_ Gas Production \_\_\_\_\_  
During Test: \_\_\_\_\_ bbls; Grav. \_\_\_\_\_; During Test \_\_\_\_\_ MCF; GOR \_\_\_\_\_

Remarks: \_\_\_\_\_

I hereby certify that the information herein contained is true and complete to the best of my knowledge.

Approved OCT 30 2006 20  
New Mexico Oil Conservation Division

By [Signature]

Title Garry Guye  
Deputy Field Inspector  
District II - Artesia

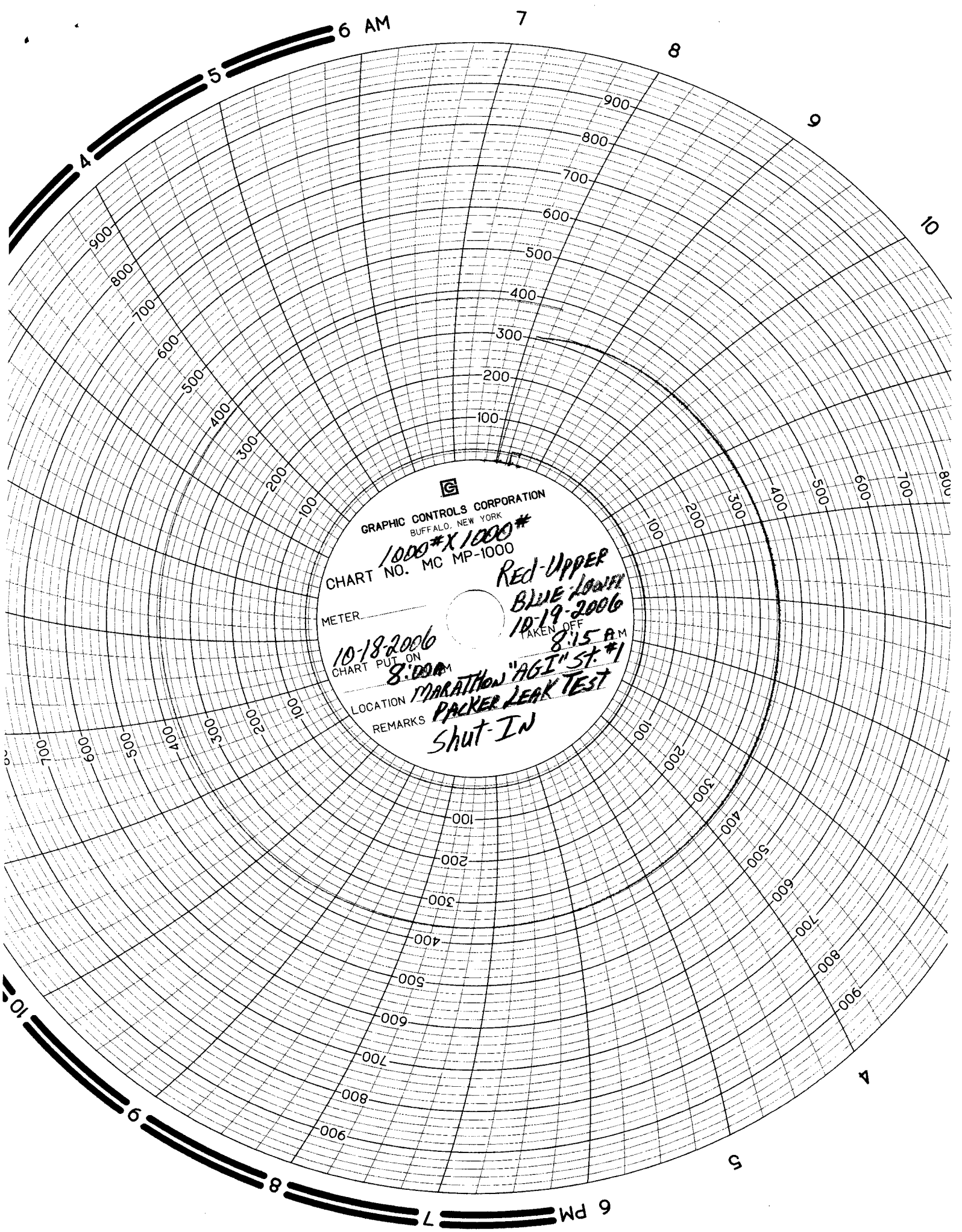
Operator Wildcat Measurement Service, Inc.

By [Signature]

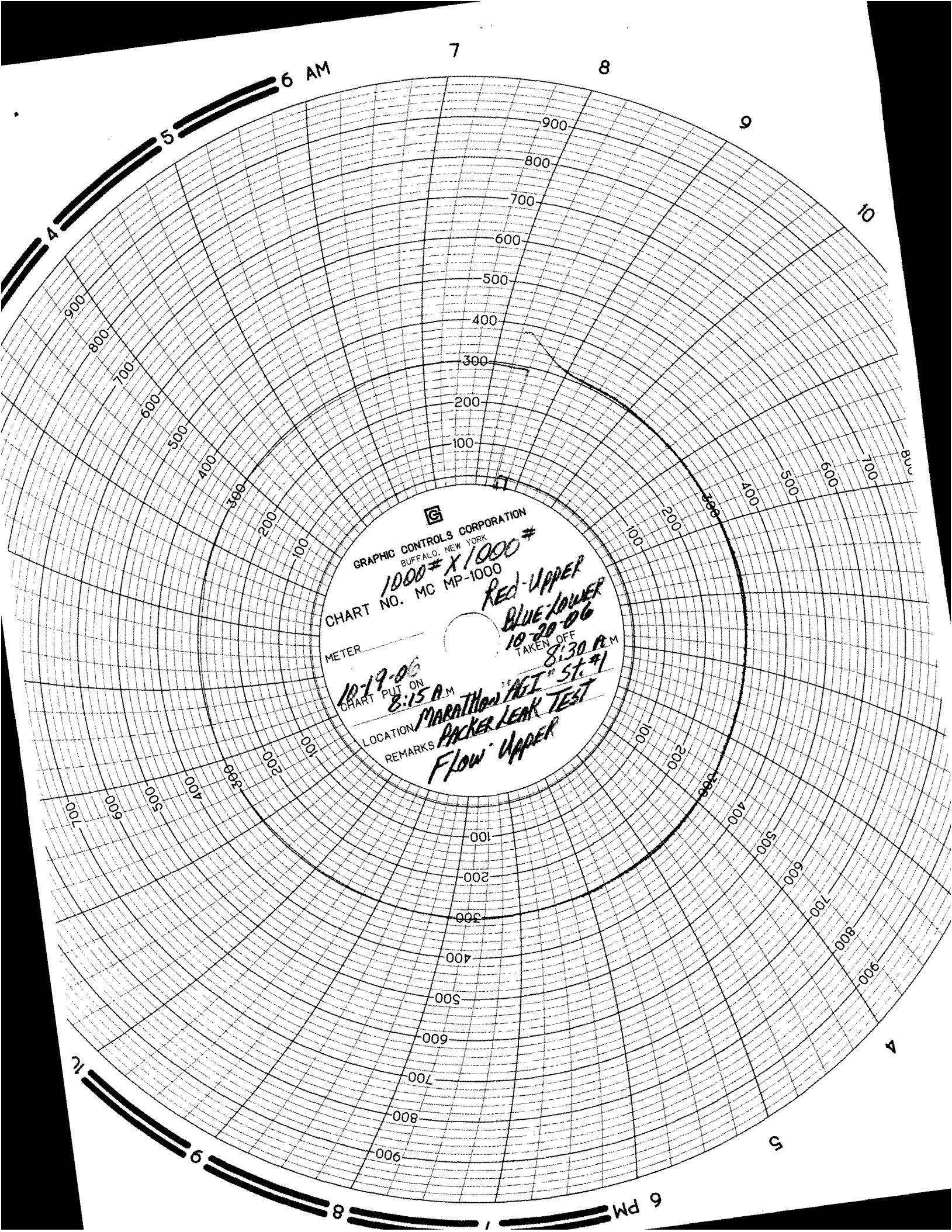
Title Don Norman/Technician

E-mail Address dnorman@wildcatms.com

Date 10/25/2006



GRAPHIC CONTROLS CORPORATION  
BUFFALO, NEW YORK  
1000#X1000#  
CHART NO. MC MP-1000  
METER \_\_\_\_\_  
10-18-2006  
CHART PUT ON 8:00 AM  
LOCATION MARATHON "AGI" ST. #1  
REMARKS PACKER LEAK TEST  
SHUT-IN  
RED-UPPER  
BLUE LOWER  
10-19-2006  
TAKEN OFF 8:15 AM



GRAPHIC CONTROLS CORPORATION  
BUFFALO, NEW YORK  
1000# X 1000#  
CHART NO. MC MP-1000  
RED-UPPER  
BLUE-LOWER  
10-20-06  
TAKEN OFF  
8:30 A.M.  
10-19-06  
CHART PUT ON  
8:15 A.M.  
LOCATION MARATHON "AET" ST. #1  
REMARKS Packer Leak Test  
Flow Upper