

NEW MEXICO OIL CONSERVATION DIVISION
SOUTHEAST NEW MEXICO PACKER LEAKAGE TEST

Revised June 9, 2003

30-615-21445

Operator Yates Petroleum Corporation Lease Tidwell "ED" Fee No. 1
Location Of Well: Unit P Section 22 Township T17S Range R26E County Eddy

	Name of Reservoir or Pool	Type of Prod. (Oil or Gas)	Method of Prod. (Flow Art. Lift)	Prod. Medium (Tbg. Or Cag.)	Choke Size
Upper Completion	Atoka (Wildcat)	None	None	CSG	
Lower Completion	Kennedy Farms Atoka	Gas	Compressor	TBG	

FLOW TEST NO. 1

Both zones shut-in at (hour, date): 10/11/2006 2:15pm

Well opened at (hour, date): 10/12/2006 2:25pm

Indicate by (X) the zone producing..... Upper Completion Lower Completion

Pressure at beginning of test..... 0.0# 320#

Stabilized? (Yes or No)..... Yes Yes

Maximum pressure during test..... 0.0# 320#

Minimum pressure during test..... 0.0# 56#

Pressure at conclusion of test..... 0.0# 123#

Pressure change during test (Maximum minus Minimum)..... 0.0# 264#

Was pressure change an increase or a decrease?..... Stable Decrease

Well closed at (hour, date): 10/13/2006 2:25pm Total Time On Production 24 hours

Oil Production _____ Gas Production _____

During Test: 0 bbls; Grav. _____; During Test 44.4 MCF; GOR _____

Remarks: Wildcat Atoka will not produce pressure is zero

FLOW TEST NO. 2

Both zones shut-in at (hour, date): _____

Well opened at (hour, date): _____

Indicate by (X) the zone producing..... Upper Completion Lower Completion

Pressure at beginning of test..... _____

Stabilized? (Yes or No)..... _____

Maximum pressure during test..... _____

Minimum pressure during test..... _____

Pressure at conclusion of test..... _____

Pressure change during test (Maximum minus Minimum)..... _____

Was pressure change an increase or a decrease?..... _____

Well closed at (hour, date): _____ Total Time On Production _____

Oil Production _____ Gas Production _____

During Test: _____ bbls; Grav. _____; During Test _____ MCF; GOR _____

Remarks: _____

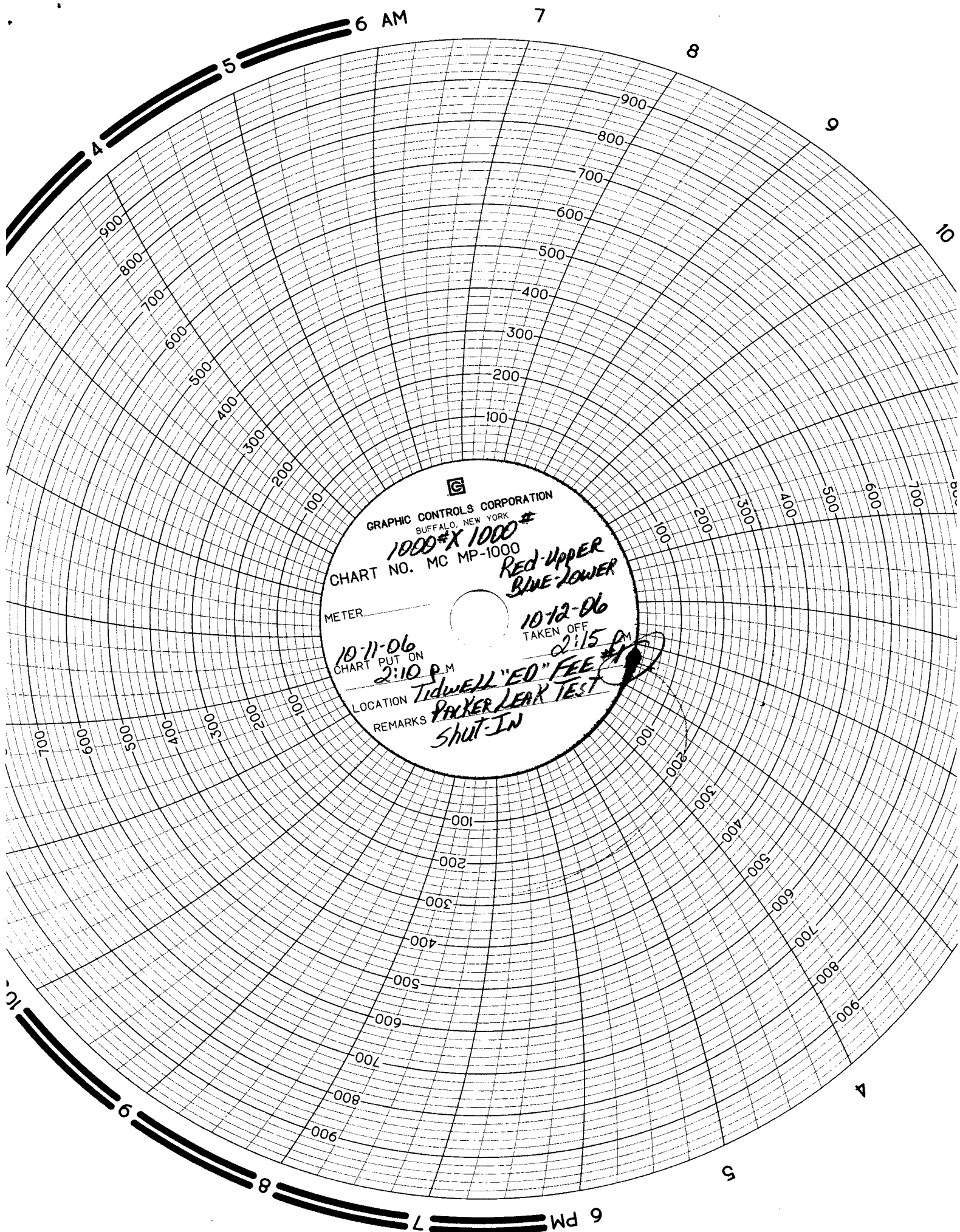
I hereby certify that the information herein contained is true and complete to the best of my knowledge.

Approved OCT 30 2006 20
New Mexico Oil Conservation Division

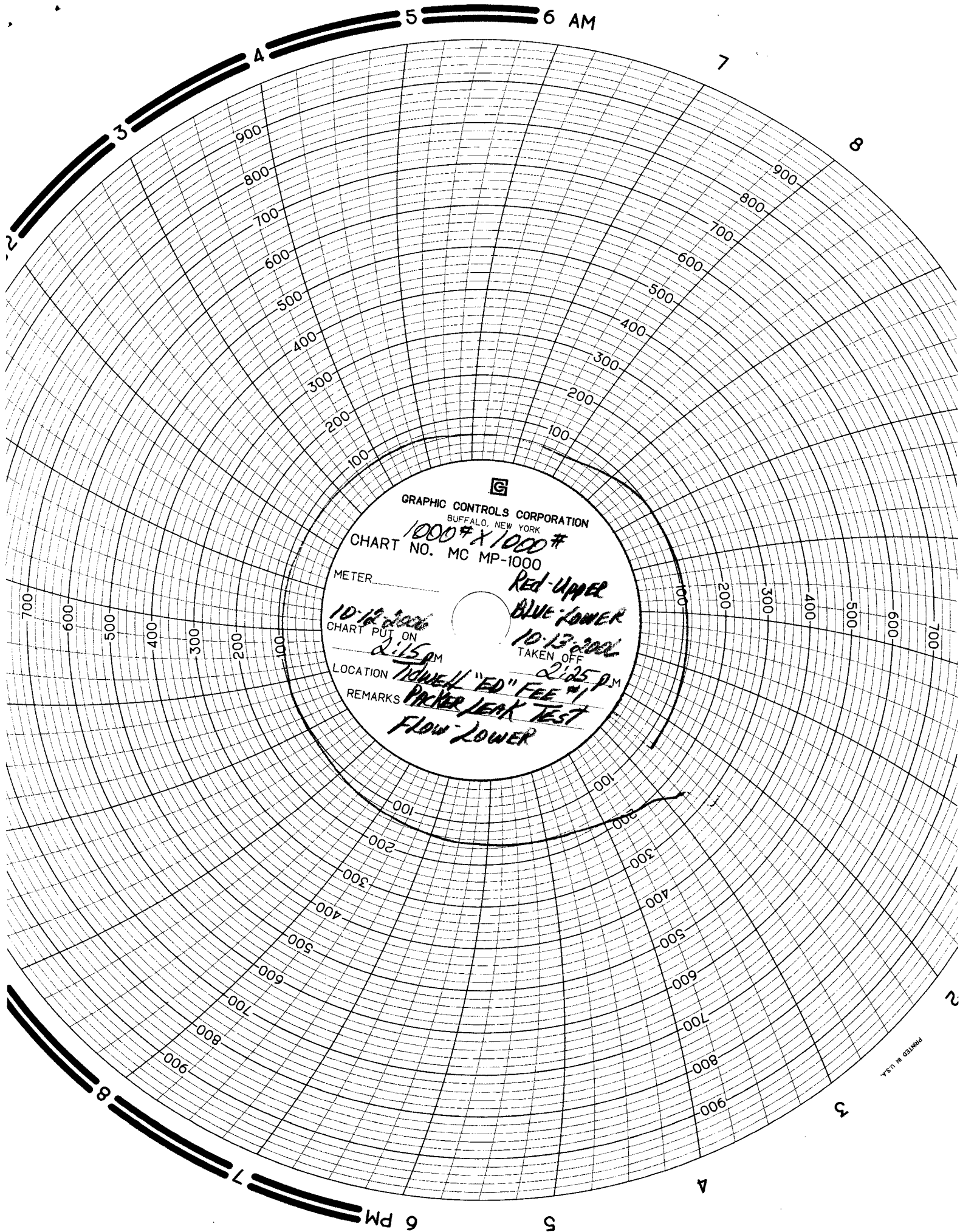
By Gerry Guye
Title Deputy Field Inspector
District II - Artesia

Operator Wildcat Measurement Service, Inc.

By Don Norman
Title Don Norman/Technician
E-mail Address dnorman@wildcatms.com
Date 10/20/2006



GRAPHIC CONTROLS CORPORATION
BUFFALO, NEW YORK
1000#X 1000#
CHART NO. MC MP-1000
RED-UPPER
BLUE-LOWER
METER
10-11-06
CHART PUT ON
2:10 P.M.
LOCATION TIDWELL "ED" FEE #1
REMARKS PAXER LEAK TEST
SHUT-IN
10-12-06
TAKEN OFF
2:15 P.M.



5 6 AM

7

8

2

3

4

5

6 PM

PRINTED IN U.S.A.