

District I  
1625 N. French Dr., Hobbs, NM 88240  
District II  
1301 W. Grand Avenue, Artesia, NM 88210  
District III  
1000 Rio Brazos Road, Aztec, NM 87410  
District IV  
1220 S. St. Francis Dr., Santa Fe, NM 87505

Form C-101  
May 27, 2004

**NOTIFY OCD OF SPUD & TIME TO WITNESS CEMENTING OF SURFACE CASING**

Submit to appropriate District Office

AMENDED REPORT



**S** APPLICATION FOR PERMIT TO DRILL, RE-ENTER, DEEPEN, PLUGBACK, OR ADD A ZONE

<sup>1</sup> Operator Name and Address  
LATIGO PETROLEUM, INC.  
P.O. BOX 10340  
MIDLAND, TEXAS 79702-7340

<sup>2</sup> OGRID Number 227001

<sup>3</sup> API Number 30- 015-35224

<sup>4</sup> Property Code 36134

<sup>5</sup> Property Name HUAPACHE "31" STATE

<sup>6</sup> Well No. 1

<sup>7</sup> Proposed Pool 1 Bunting Ranch; Morrow

<sup>8</sup> Proposed Pool 2

<sup>9</sup> Surface Location

UL or lot no.	Section	Township	Range	Lot Idn	Feet from the	North/South line	Feet from the	East/West line	County
C	31	19S	23E		660'	NORTH	1980'	WEST	EDDY

<sup>10</sup> Proposed Bottom Hole Location If Different From Surface

UL or lot no.	Section	Township	Range	Lot Idn	Feet from the	North/South line	Feet from the	East/West line	County

**Additional Well Information**

<sup>11</sup> Work Type Code N	<sup>12</sup> Well Type Code G	<sup>13</sup> Cable/Rotary ROTARY	<sup>14</sup> Lease Type Code S	<sup>15</sup> Ground Level Elevation 4157'
<sup>16</sup> Multiple NO	<sup>17</sup> Proposed Depth 8200'	<sup>18</sup> Formation MORROW	<sup>19</sup> Contractor UNKNOWN	<sup>20</sup> Spud Date WHEN APPROVED
Depth to Groundwater 100'+		Distance from nearest fresh water well .7 Mi.		Distance from nearest surface water No known surface water near.
Pit: Liner: Synthetic <input checked="" type="checkbox"/> 12 mils thick Clay <input type="checkbox"/>		Pit Volume: 18Mbbbls		Drilling Method: Fresh Water <input checked="" type="checkbox"/> Brine <input checked="" type="checkbox"/> Diesel/Oilbased <input type="checkbox"/> Gas/Air <input type="checkbox"/>
Closed-Loop System <input type="checkbox"/>				

<sup>21</sup> Proposed Casing and Cement Program

Hole Size	Casing Size	Casing weight/foot	Setting Depth	Sacks of Cement	Estimated TOC
17 1/2"	13 3/8"	48#	40'	REDI-MIX	SURFACE
12 1/4"	9 5/8"	36#	1500'	720 Sx.	CIRCULATE
8 3/4"	5 1/2"	17#	8200'	970 Sx.	ETOC 5000' FS
				@ 4000'	<i>BJ</i>

<sup>22</sup> Describe the proposed program. If this application is to DEEPEN or PLUG BACK, give the data on the present productive zone and proposed new productive zone. Describe the blowout prevention program, if any. Use additional sheets if necessary.

1. Drill 17 1/2" hole to 40'. Set 40' of 13 3/8" conductor pipe and cement to surface with Redi-mix.
2. Drill 12 1/4" hole to 1500'. Run and set 1500' of 9 5/8" 36# J-55 ST&C casing. cement with 420 Sx. of Class "C" 65/35/6 POZ GEL + 5% Salt, + 1/2# Flocele/Sx., tail in with 300 Sx. of Class "C" + 2% CaCl, + 1/2# Flocele/Sx. Circulate cement to surface.
3. Drill 8 3/4" hole to 8200'. Run and set 8200' of 5 1/2" 17# J-55 LT&C casing. Cement with 970 Sx. of Class "H" cement + 1% FLA, + .3% DISPERSANT. + .15% SMS. + .1% retarder. Estimate top of cement 5000' from surface.

**CEMENT TO COVER ALL OIL, GAS AND WATER BEARING ZONES**

<sup>23</sup> I hereby certify that the information given above is true and complete to the best of my knowledge and belief. I further certify that the drilling pit will be constructed according to NMOCD guidelines  general permit  or an (attached) alternative OCD-approved plan .

Approved by: *BJ* OIL CON: **BRYAN G. ARKANI**  
DISTRICT II GEOLOGIST

Printed name: Joe T. Janica Title: **BRYAN G. ARKANI**  
DISTRICT II GEOLOGIST

Title: Agent Approval Date: **NOV 07 2006** Expiration Date: **NOV 07 2007**

E-mail Address: joejanica@valornet.com

Date: 11/04/06 Phone: 505-391-8503 Conditions of Approval Attached

**Proposed Drilling Plan for Huapache 31 State #1**

1. Drill 17 1/2" hole to 40' & set 13 3/8" conductor pipe & cement to surface with Redi-mix.
2. Drill 12 1/4" hole to 1500' & set 9 5/8", 36#, J-55 csg at that depth & cement to surface w/420 sx 65:35 Poz/C + 6% gel + 5% salt + 1/4#/sx celloflake tailed w/300 sx C + 2% CaCl<sub>2</sub> + 1/4#/sx celloflake.
3. Drill 8 3/4" hole to ~8200' & set 5 1/2", 17# csg at that depth & cement w/970 sx H + 1% FLA + .3% dispersant + .15% SMS + .1% retarder. Estimated top of cement @ 5000'.

There is no known presence of any H<sub>2</sub>S in this area



The first 1500' of the hole will be drilled with Fresh water, the production hole will be drilled with cut brine.

State of New Mexico

Energy, Minerals and Natural Resources Department

DISTRICT I

1625 N. FRENCH DR., BOBES, NM 86246

DISTRICT II

1301 V. GRAND AVENUE, ARTESIA, NM 86210

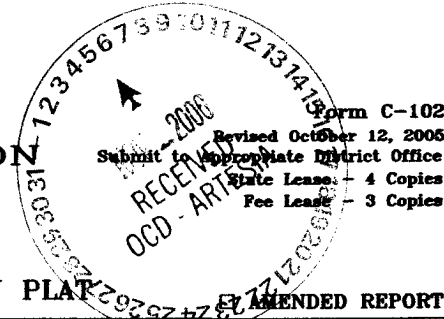
DISTRICT III

1000 Rio Brazos Rd., Aztec, NM 87410

DISTRICT IV

1220 S. ST. FRANCIS DR., SANTA FE, NM 87505

OIL CONSERVATION DIVISION  
1220 SOUTH ST. FRANCIS DR.  
Santa Fe, New Mexico 87505



WELL LOCATION AND ACREAGE DEDICATION PLAT AMENDED REPORT

API Number	Pool Code	Pool Name
	731cc	Bunting Ranch, Marrow
Property Code	Property Name	Well Number
	HUAPACHE 31 STATE	1
OGRID No.	Operator Name	Elevation
227001	LATIGO PETROLEUM, INC.	4157'

Surface Location

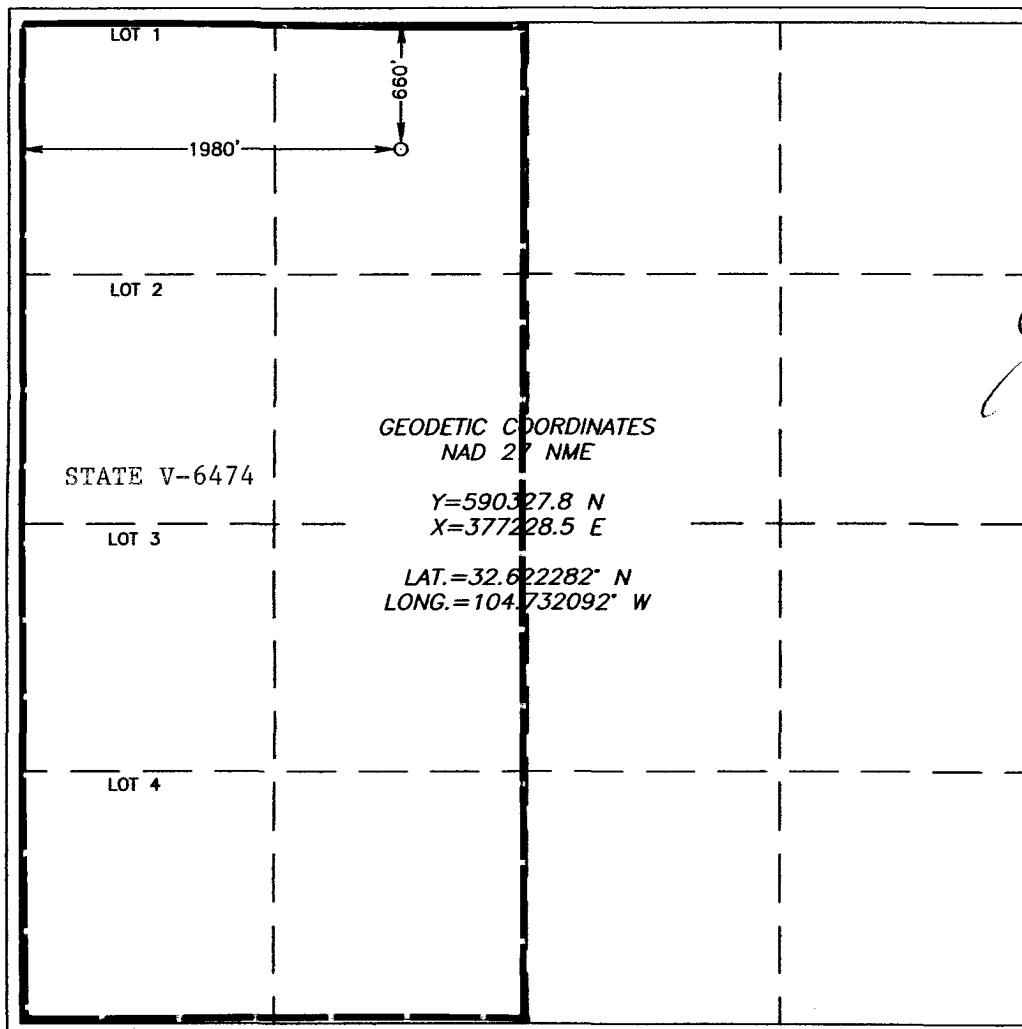
UL or lot No.	Section	Township	Range	Lot Idn	Feet from the	North/South line	Feet from the	East/West line	County
C	31	19-S	23-E		660	NORTH	1980	WEST	EDDY

Bottom Hole Location If Different From Surface

UL or lot No.	Section	Township	Range	Lot Idn	Feet from the	North/South line	Feet from the	East/West line	County

Dedicated Acres	Joint or Infill	Consolidation Code	Order No.
320			

NO ALLOWABLE WILL BE ASSIGNED TO THIS COMPLETION UNTIL ALL INTERESTS HAVE BEEN CONSOLIDATED OR A NON-STANDARD UNIT HAS BEEN APPROVED BY THE DIVISION



**OPERATOR CERTIFICATION**

I hereby certify that the information herein is true and complete to the best of my knowledge and belief, and that this organization either owns a working interest or unleased mineral interest in the land including the proposed bottom hole location or has a right to drill this well at this location pursuant to a contract with an owner of such mineral or working interest, or to a voluntary pooling agreement or a compulsory pooling order heretofore entered by the division.

Signature: *Joe T. Janicea* Date: 11/04/06  
 Printed Name: Joe T. Janicea  
 Agent

---

**SURVEYOR CERTIFICATION**

I hereby certify that the well location shown on this plat was plotted from field notes of actual surveys made by me or under my supervision, and that the same is true and correct to the best of my belief.

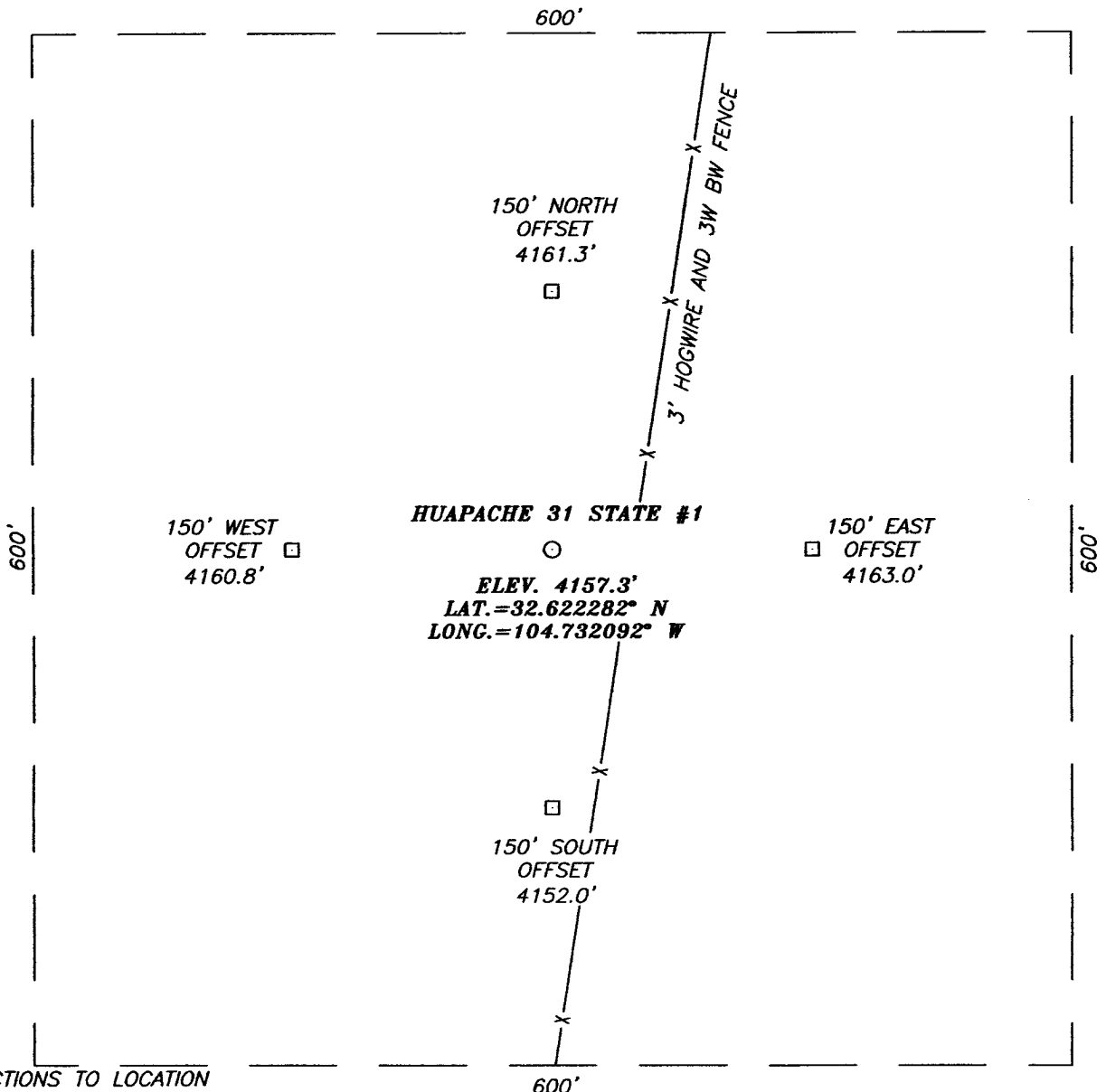
OCTOBER 19, 2006

Date Surveyed: JMD

Signature & Seal of Professional Surveyor: *Gary E. Edson* 10/27/06  
 06.11.1667

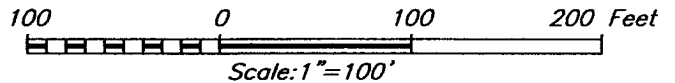
Certificate No. GARY EDSON 12641

**SECTION 31, TOWNSHIP 19 SOUTH, RANGE 23 EAST, N.M.P.M.,**  
 EDDY COUNTY, NEW MEXICO



**DIRECTIONS TO LOCATION**

FROM THE INTERSECTION OF EDDY CO. RD. 12 (ARMSTRONG) AND EDDY CO. RD. 23 (ROCK DAISY) GO NORTH ON ARMSTRONG FOR APPROX. 2.5 MILES TO SIEGREEST ROAD. TURN LEFT (WEST) AND GO APPROX. 0.6 MILES TO A GATE AT THE OLD BUNTING RANCH HOUSE, CONTINUE WEST THROUGH GATE FOR APPROX. 0.4 MILES TO A TWO TRACK ROAD ON LEFT, TURN LEFT (SOUTH) AND GO APPROX. 0.5 MILES TO A TWO TRACK ROAD ON LEFT, TURN LEFT (EAST) AND GO APPROX. 0.5 MILES TO THE E.G.L. RESOURCES RUNYON 30 STATE COM# 1 WELL, CONTINUE EAST PAST WELL APPROX. 300' TO FENCE, FOLLOW FENCE SOUTH FOR APPROX. 0.35 MILES TO THE LOCATION.



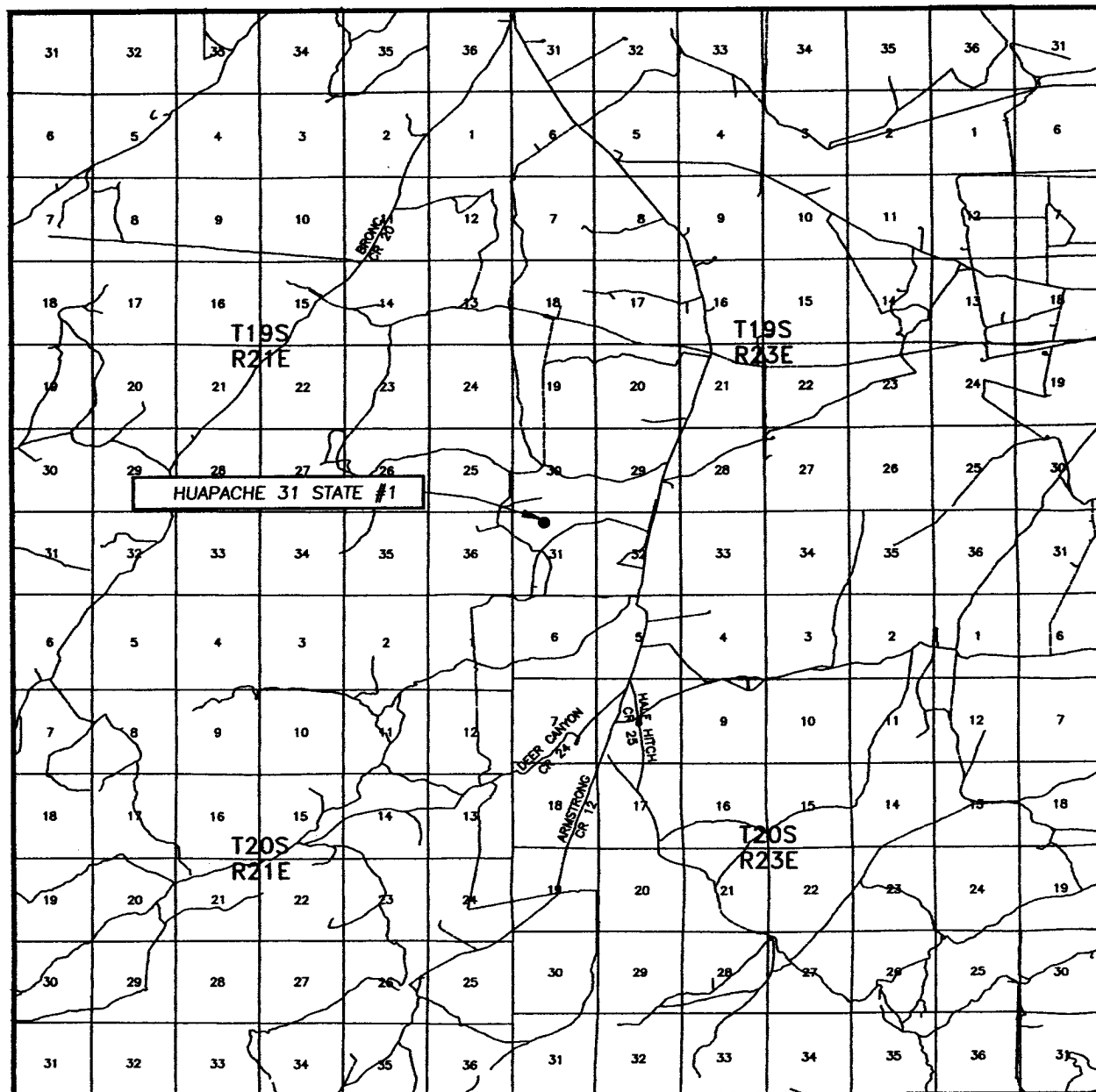
**LATIGO PETROLEUM, INC.**

HUAPACHE 31 STATE #1 WELL  
 LOCATED 660 FEET FROM THE NORTH LINE  
 AND 1980 FEET FROM THE WEST LINE OF SECTION 31,  
 TOWNSHIP 19 SOUTH, RANGE 23 EAST, N.M.P.M.,  
 EDDY COUNTY, NEW MEXICO.

Survey Date: 10/19/06	Sheet 1 of 1 Sheets
W.O. Number: 06.11.1667	Dr By: JMD
Date: 12/24/06	Disk: CD#1
06111667	Scale: 1"=100'


PROVIDING SURVEYING SERVICES  
 SINCE 1948  
**JOHN WEST SURVEYING COMPANY**  
 412 N. DAL PASO  
 HOBBS, N.M. 88240  
 (505) 383-3117

# VICINITY MAP



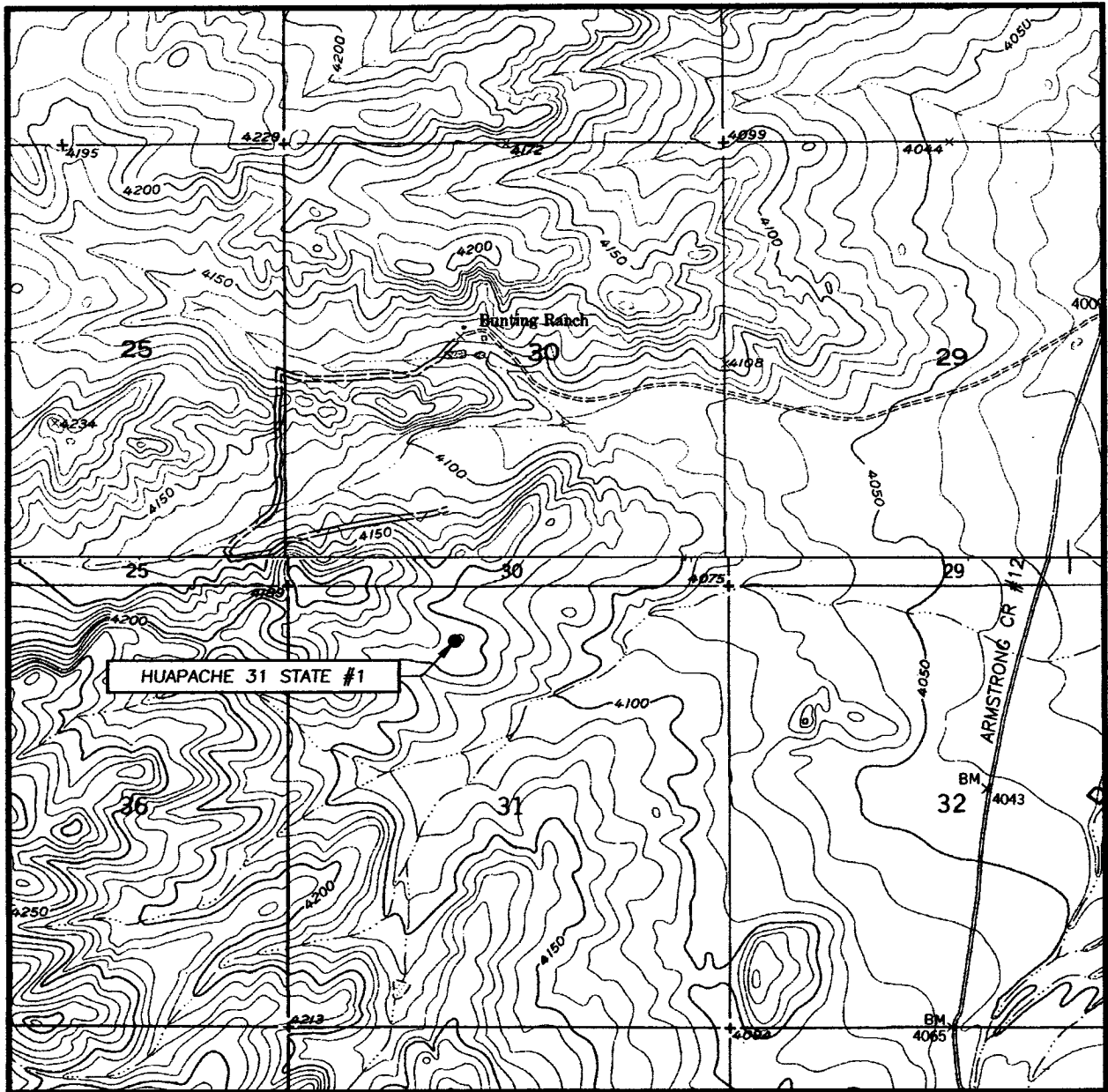
SCALE: 1" = 2 MILES

SEC. 31 TWP. 19-S RGE. 23-E  
 SURVEY N.M.P.M.  
 COUNTY EDDY STATE NEW MEXICO  
 DESCRIPTION 660' FNL & 1980' FWL  
 ELEVATION 4157'  
 OPERATOR LATIGO PETROLEUM, INC.  
 LEASE HUAPACHE 31 STATE



**PROVIDING SURVEYING SERVICES**  
 SINCE 1946  
**JOHN WEST SURVEYING COMPANY**  
 412 N. DAL PASO  
 HOBBS, N.M. 88240  
 (505) 383-3117

# LOCATION VERIFICATION MAP



SCALE: 1" = 2000'

CONTOUR INTERVAL:  
BOX CANYON RANCH, N.M. - 10'

SEC. 31 TWP. 19-S RGE. 23-E

SURVEY N.M.P.M.

COUNTY EDDY STATE NEW MEXICO

DESCRIPTION 660' FNL & 1980' FWL


ELEVATION 4157'

OPERATOR LATIGO PETROLEUM, INC.

OPERATOR CORPORATION

LEASE HUAPACHE 31 STATE

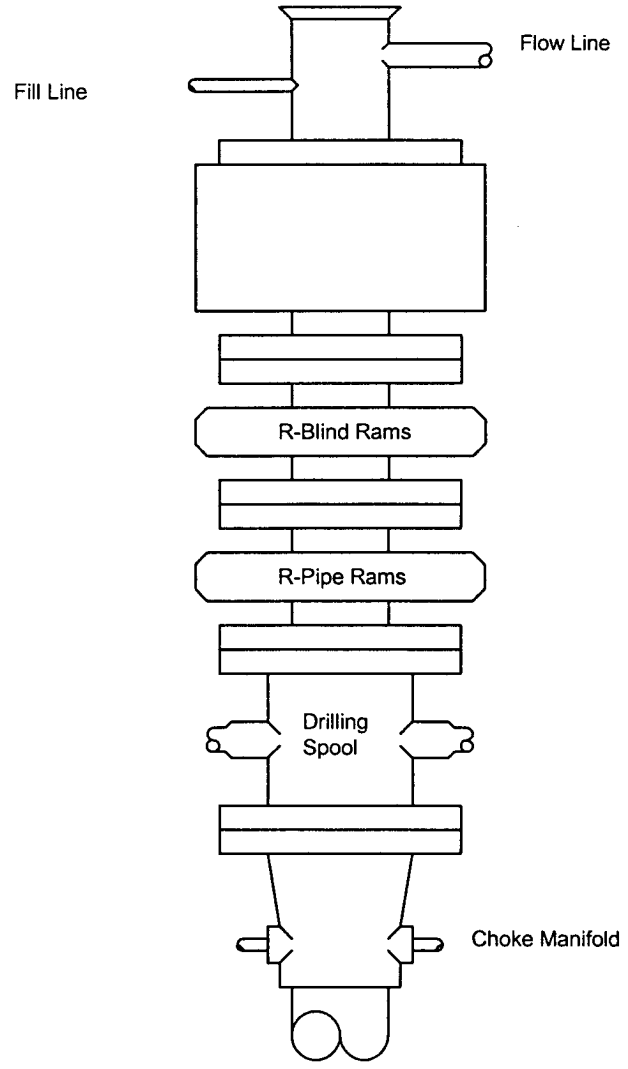
U.S.G.S. TOPOGRAPHIC MAP  
BOX CANYON RANCH, N.M.



**PROVIDING SURVEYING SERVICES**  
**SINCE 1946**  
**JOHN WEST SURVEYING COMPANY**  
 412 N. DAL PASO  
 HOBBS, N.M. 88240  
 (505) 393-3117

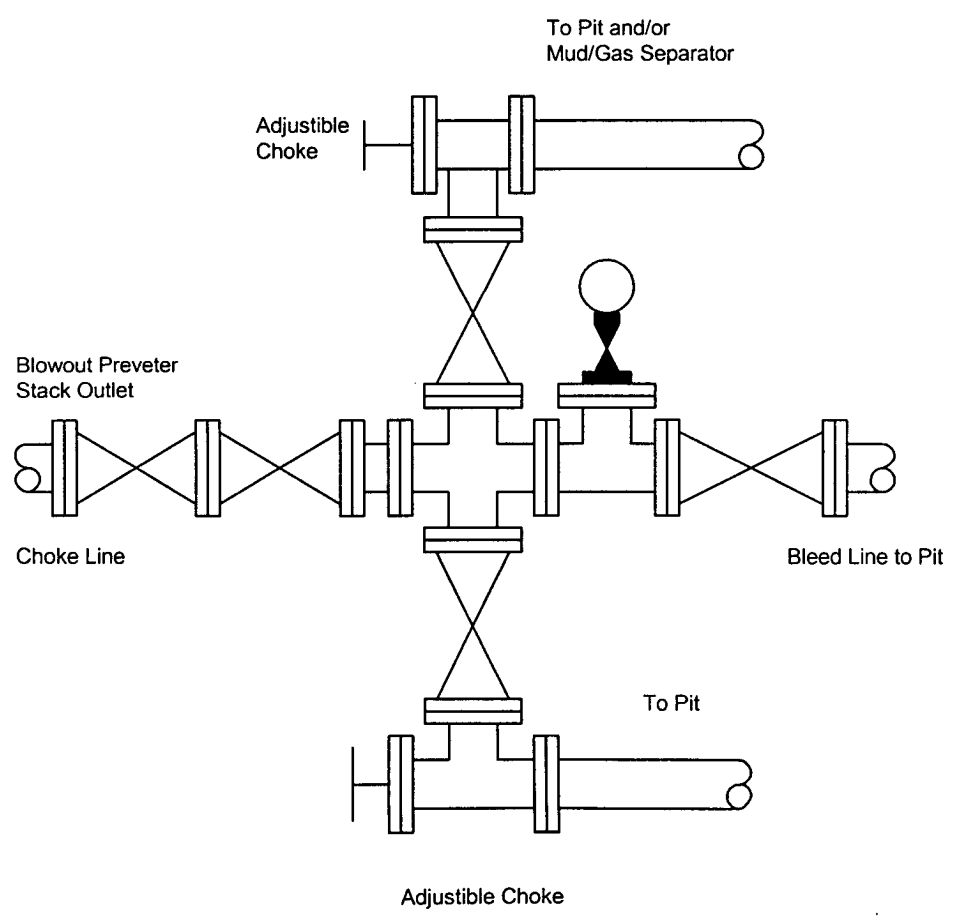
# BLOWOUT PREVENTER SYSTEM

5000 PSI



Type 900 Series  
5000 psi WP

## Choke Manifold Assembly for 5M WP System



# Inactive Well List

Total Well Count:241 Inactive Well Count:5 Since:7/14/2005

Printed On: Monday, November 06 2006

District	API	Well	ULSTR	OCD Unit	OGRID	Operator	Lease Type	Well Type	Last Production	Formation/Notes	Status	Li
1	30-025-10945	E C HILL B FEDERAL #001	A-34-23S-37E	A	227001	LATIGO PETROLEUM, INC.	F	O	08/1998	PADDOCK- BLINEBRY	T	2
1	30-025-10967	E C HILL D FEDERAL #003	D-35-23S-37E	D	227001	LATIGO PETROLEUM, INC.	F	O	11/1993		T	1
1	30-025-10936	EVA E BLINEBRY FEDERAL #001	I-34-23S-37E	I	227001	LATIGO PETROLEUM, INC.	F	O	02/2005			
1	30-025-21305	FEDERAL A 13 #005	J-13-09S-35E	J	227001	LATIGO PETROLEUM, INC.	F	O	12/2004			
1	30-025-05567	NEW MEXICO CE STATE #002	F-6 -19S-37E	F	227001	LATIGO PETROLEUM, INC.	S	O	03/2005	YATES-SEVEN RIVERS-QUEEN		

WHERE Ogrid:227001, County:All, District:All, Township:All, Range:All, Section:All, Production(months):16