

DISTRICT I

FRANCIS DR., HORRIS, NM 86240

DISTRICT II

FRANCIS DR., ARTESIA, NM 88210

DISTRICT III

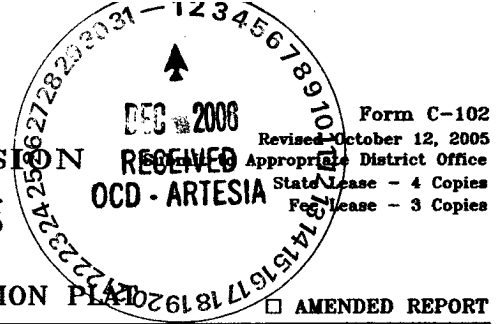
FRANCIS DR., ARTESIA, NM 88210

DISTRICT IV

1220 S. ST. FRANCIS DR., SANTA FE, NM 87505

State of New Mexico

Energy, Minerals and Natural Resources Department

OIL CONSERVATION DIVISION
1220 SOUTH ST. FRANCIS DR.
Santa Fe, New Mexico 87505

Form C-102

Revised October 12, 2005

Appropriate District Office

State Lease - 4 Copies

Fee Lease - 3 Copies

WELL LOCATION AND ACREAGE DEDICATION PLAT ☐ AMENDED REPORT

API Number 30-C15-35261		Pool Code 96210	Pool Name Empire Yeso
Property Code 302569	Property Name STATE S-19		Well Number 29
OGRID No. 229137	Operator Name COG OPERATING, LLC		Elevation 3655'

Surface Location

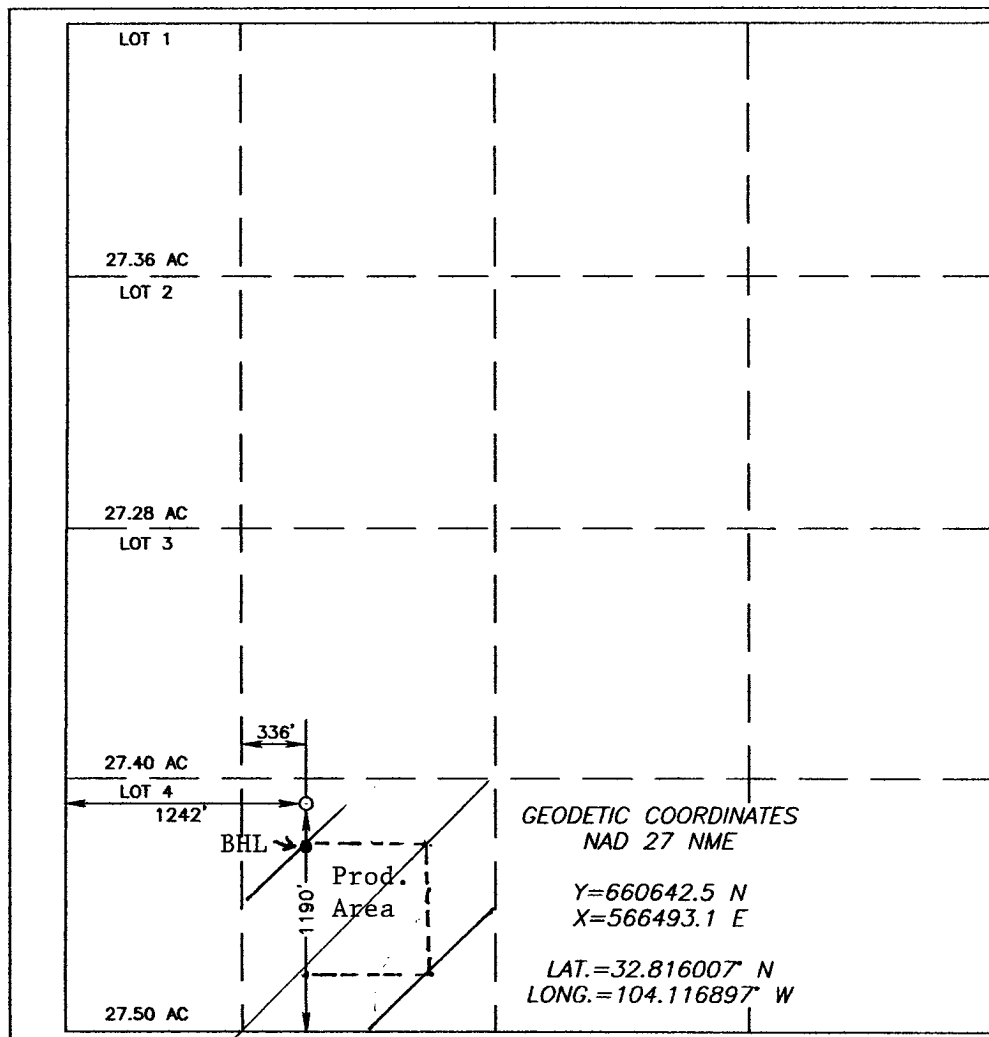
UL or lot No.	Section	Township	Range	Lot Idn	Feet from the	North/South line	Feet from the	East/West line	County
N	19	17-S	29-E		1190	SOUTH	1242	WEST	EDDY

Bottom Hole Location If Different From Surface

UL or lot No.	Section	Township	Range	Lot Idn	Feet from the	North/South line	Feet from the	East/West line	County
N	19	17S	29E		990	SOUTH	1242	WEST	EDDY

Dedicated Acres	Joint or Infill	Consolidation Code	Order No.
40			

NO ALLOWABLE WILL BE ASSIGNED TO THIS COMPLETION UNTIL ALL INTERESTS HAVE BEEN CONSOLIDATED
OR A NON-STANDARD UNIT HAS BEEN APPROVED BY THE DIVISION



OPERATOR CERTIFICATION

I hereby certify that the information herein is true and complete to the best of my knowledge and belief, and that this organization either owns a working interest or unleased mineral interest in the land including the proposed bottom hole location or has a right to drill this well at this location pursuant to a contract with an owner of such mineral or working interest, or to a voluntary pooling agreement or a compulsory pooling order heretofore entered by the division.

Jerry W. Sherrell 12/1/06
Signature Date

Jerry W. Sherrell
Printed Name

SURVEYOR CERTIFICATION

I hereby certify that the well location shown on this plat was plotted from field notes of actual surveys made by me or under my supervision, and that the same is true and correct to the best of my belief.

NOVEMBER 9, 2006

Date Surveyed 11/27/06 REV:11/27/06
Signature & Seal of Professional Surveyor

Gary E. Edson 11/27/06
06.11.1785

Certificate No. GARY EDSON 12641