

AT507-152

Month - Year
FEB 21 2007
OCD - ARTESIA, NM

OCD-ARTESIA

Form 3160-3
(April 2004)

UNITED STATES
DEPARTMENT OF THE INTERIOR
BUREAU OF LAND MANAGEMENT



FORM APPROVED
OMB No. 1004-0137
Expires March 31, 2007

APPLICATION FOR PERMIT TO DRILL OR REENTER

| | | |
|--|---|--|
| 1a. Type of work: <input checked="" type="checkbox"/> DRILL <input type="checkbox"/> REENTER | | 5. Lease Serial No. NM NM 115996 |
| 1b. Type of Well: <input type="checkbox"/> Oil Well <input checked="" type="checkbox"/> Gas Well <input type="checkbox"/> Other <input checked="" type="checkbox"/> Single Zone <input type="checkbox"/> Multiple Zone | | 6. If Indian, Allottee or Tribe Name |
| 2. Name of Operator Parallel Petroleum Corporation | | 7. If Unit or CA Agreement, Name and No. |
| 3a. Address 1004 North Big Spring, Suite 400 Midland, Texas | 3b. Phone No. (include area code) 432/684-3727 | 8. Lease Name and Well No. Little Joe 2020-4 Federal #1 |
| 4. Location of Well (Report location clearly and in accordance with any State requirements.) At surface 1860' FEL and 218' FWL At proposed prod. zone 1860' FEL and 660' FEL ROSWELL CONTROLLED WATER BASIN | | 9. API Well No. 30-005-63902 |
| 11. Sec., T. R. M. or Blk. and Survey or Area 4-T20S-R20E | | 10. Field and Pool, or Exploratory Wolfcamp |
| 14. Distance in miles and direction from nearest town or post office* 15 miles south of Hope, New Mexico | | 12. County or Parish Chaves |
| 13. State NM | | |
| 15. Distance from proposed* location to nearest property or lease line, ft. (Also to nearest drig. unit line, if any) 660' | 16. No. of acres in lease 2096.32 | 17. Spacing Unit dedicated to this well 320 |
| 18. Distance from proposed location* to nearest well, drilling, completed, applied for, on this lease, ft. 1300' | 19. Proposed Depth 5,200' | 20. BLM/BIA Bond No. on file NMB000265 |
| 21. Elevations (Show whether DF, KDB, RT, GL, etc.) GL 4836' | 22. Approximate date work will start* 03/01/2007 | 23. Estimated duration 30 days |

24. Attachments

The following, completed in accordance with the requirements of Onshore Oil and Gas Order No.1, shall be attached to this form:

- | | |
|---|--|
| 1. Well plat certified by a registered surveyor. | 4. Bond to cover the operations unless covered by an existing bond on file (see Item 20 above). |
| 2. A Drilling Plan. | 5. Operator certification |
| 3. A Surface Use Plan (if the location is on National Forest System Lands, the SUPO shall be filed with the appropriate Forest Service Office). | 6. Such other site specific information and/or plans as may be required by the authorized officer. |

| | | |
|--------------------------------------|--------------------------------------|--------------------|
| 25. Signature <i>Deane Durham</i> | Name (Printed/Typed) Deane Durham | Date 01/08/2007 |
|--------------------------------------|--------------------------------------|--------------------|

Title
Drilling Engineer, Parallel Petroleum Corporation

| | | |
|--|---|---------------------|
| Approved by (Signature) <i>/s/ James Stovall</i> | Name (Printed/Typed) <i>/s/ James Stovall</i> | Date FEB 16 2007 |
|--|---|---------------------|

| | |
|--------------------------------------|--|
| Title ACTING FIELD MANAGER | Office CARLSBAD FIELD OFFICE |
|--------------------------------------|--|

Application approval does not warrant or certify that the applicant holds legal or equitable title to those rights in the subject lease which would entitle the applicant to conduct operations thereon.
Conditions of approval, if any, are attached.

APPROVAL FOR 1 YEAR

Title 18 U.S.C. Section 1001 and Title 43 U.S.C. Section 1212, make it a crime for any person knowingly and willfully to make to any department or agency of the United States any false, fictitious or fraudulent statements or representations as to any matter within its jurisdiction.

*(Instructions on page 2)

SEE ATTACHED FOR
CONDITIONS OF APPROVAL

APPROVAL SUBJECT TO
GENERAL REQUIREMENTS
AND SPECIAL STIPULATIONS
ATTACHED

DISTRICT I
1625 N. French Dr., Hobbs, NM 88240

State of New Mexico
Energy, Minerals & Natural Resources Department

Form C-102
Revised October 12, 2005
Submit to Appropriate District Office
State Lease - 4 Copies
Fee Lease - 3 Copies

DISTRICT II
1301 W. Grand Avenue, Artesia, NM 88210

OIL CONSERVATION DIVISION
1220 South St. Frances Dr.
Santa Fe, NM 87505

DISTRICT III
1000 Rio Brazos Rd., Aztec, NM 87410

DISTRICT IV
1220 S. St. Francis Dr., Santa Fe, NM 87505

☐ AMENDED REPORT

WELL LOCATION AND ACREAGE DEDICATION PLAT

| | | |
|---------------|---|--------------------------------|
| API Number | Pool Code 97489 | Pool Name Wildcat, Wolfcamp |
| Property Code | Property Name LITTLE JOE 2020-4 FEDERAL | Well Number 1 |
| OGRID No. | Operator Name PARALLEL PETROLEUM CORPORATION | Elevation 4836' |

Surface Location

| UL or lot No. | Section | Township | Range | Lot Idn | Feet from the | North/South line | Feet from the | East/West line | County |
|---------------|---------|----------|-------|---------|---------------|------------------|---------------|----------------|--------|
| 5 | 4 | 20 S | 20 E | | 1860 | NORTH | 218 | WEST | CHAVES |

Bottom Hole Location If Different From Surface

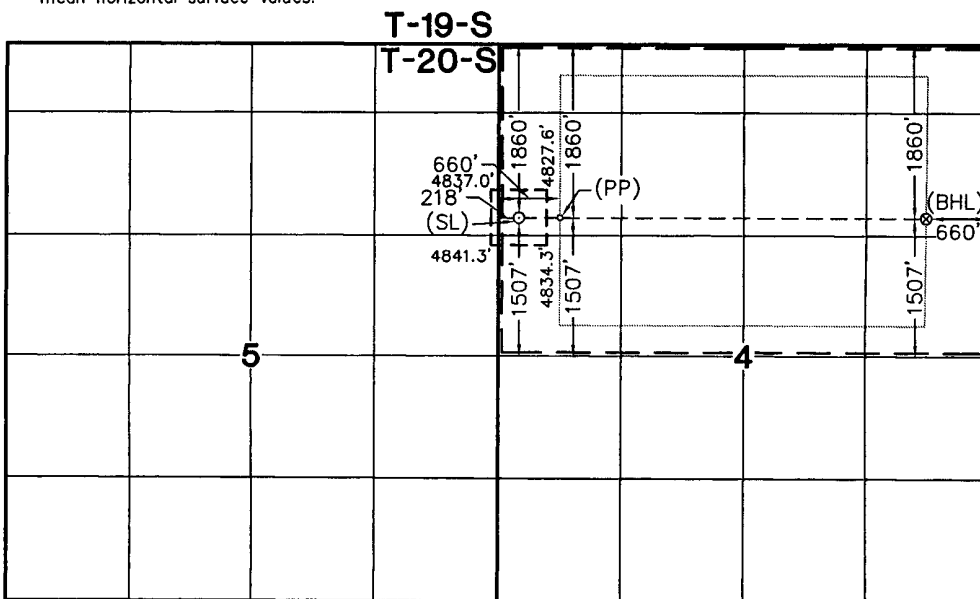
| UL or lot No. | Section | Township | Range | Lot Idn | Feet from the | North/South line | Feet from the | East/West line | County |
|---------------|---------|----------|-------|---------|---------------|------------------|---------------|----------------|--------|
| 8 | 4 | 20 S | 20 E | | 1860 | NORTH | 660 | EAST | CHAVES |

| | | | |
|----------------------------|-----------------|--------------------|-----------|
| Dedicated Acres 3227.52 | Joint or Infill | Consolidation Code | Order No. |
|----------------------------|-----------------|--------------------|-----------|

NO ALLOWABLE WILL BE ASSIGNED TO THIS COMPLETION UNTIL ALL INTERESTS HAVE BEEN CONSOLIDATED OR A NON-STANDARD UNIT HAS BEEN APPROVED BY THE DIVISION

NOTE:

- 1) Plane Coordinates shown hereon are Transverse Mercator Grid and Conform to the "New Mexico Coordinate System", New Mexico East Zone, North American Datum of 1927. Distances shown hereon are mean horizontal surface values.



OPERATOR CERTIFICATION

I hereby certify the information contained herein is true and complete to the best of my knowledge and belief, and that this organization either owns a working interest or unleased mineral interest in the land including the proposed bottom hole location or has a right to drill this well at this location pursuant to a contract with an owner of such a mineral or working interest, or to a voluntary pooling agreement or a compulsory pooling order heretofore entered by the division.

Deane Durham 1-8-07
Signature Date
Deane Durham
Printed Name

SURVEYOR CERTIFICATION

I hereby certify that the well location shown on this plat was plotted from field notes of actual surveys made by me or under my supervision and that the same is true and correct to the best of my belief.

December 19, 2006

Date of Survey LVA
Signature & Seal of Professional Surveyor

M. M.

W.O. Num. 2006-1284

Certificate No. MACON McDONALD 12185

| Coordinate Table | |
|------------------------------|------------------|
| Description | Plane Coordinate |
| Little Joe 2020-4 Federal #1 | X = 322,549.0 |
| Surface Location | Y = 584,110.5 |
| Little Joe 2020-4 Federal #1 | X = 322,990.9 |
| Penetration Point | Y = 584,108.2 |
| Little Joe 2020-4 Federal #1 | X = 326,931.7 |
| Bottom Hole Location | Y = 584,088.0 |

**ATTACHMENT TO FORM 3160-5
LITTLE JOE 2020-4 FEDERAL #1
Surface Hole Location
1860 FNL AND 218 FWL, SEC 4, 20S, 20E
Bottom Hole Location
1860 FNL AND 660 FEL, SEC 4, 20S, 20E
CHAVES COUNTY, NEW MEXICO**

DRILLING PROGRAM

This well is designed as a horizontal test in the Wolfcamp formation.

1. GEOLOGIC NAME OF SURFACE FORMATION

San Andres

2. ESTIMATED TOPS OF IMPORTANT GEOLOGIC MARKERS

GL 4836'
Glorieta 2439'(+2397')
Tubb 3445'(+1391')
Yeso 3585' (+1251')
Abo Shale 4085' (+751')
Abo Carbonate 4199' (+637')
Wolfcamp 5037' (-201')
Wolfcamp Shale 5130'(-294')
TD 5200' Pilot Hole

3. ESTIMATED DEPTHS OF ANTICIPATED FRESH WATER, OIL, OR GAS

Fresh water 790'
Oil and Gas Wolfcamp 5037' (-201')
No H₂S gas should be encountered

4. CASING AND CEMENTING PROGRAM

| <u>Casing Size</u> | <u>From</u> <u>To</u> | <u>Weight</u> | <u>Grade</u> | <u>Joint</u> |
|--------------------|-----------------------|---------------|--------------|--------------|
| 16" conductor | 0'-120' | | | |
| 8 5/8" | 0' - 1500' | 24# | J-55 | STC |
| 5 1/2" | 0' - 9,249' | 17# | N-80 | LTC |

Equivalent or adequate grades and weights of casing may be substituted at time casing is run, depending on availability.

LITTLE JOE 2020-4 FEDERAL #1

Page 2

8-5/8" slurry: Lead: 125 sacks (50:50) Poz (Fly Ash): Class C + 5% bwow Sodium Chloride + 10% bwoc Bentonite + 151.7% fresh water. Tail: 200 sacks Class C + 1% bwoc Calcium Chloride + 56.3% fresh water

Note: If cement does not circulate to surface, notify BLM. A temperature survey will be required. Top out to surface with 1" pipe in the annulus.

Note: 5-1/2" Cement casing with enough volume to circulate to surface plus 25%. (Acid soluble CMT). Lead - 560 sacks 50:50 Poz (Fly Ash):Class C CMT + 10% Bentonite + 0.2% FL-52A + 0.2% Sodium Metasilicate + 141% fresh water. Tail - 560 sacks Class H CMT + 0.6% BA-10 + 0.4% CD-32 + 1% FL-62 + 0.1% ASA-301 + 0.4% Sodium Metasilicate + 20 lbs/sack calcium carbonate + 53% fresh water. Cement must tie back to surface casing per completion procedure.

Drilling Procedure

- a. Set 16" conductor pipe as deep as possible up to 120' with a rathole unit.
- b. Drill 11" surface hole to an approximate depth of 1500', using fresh water and viscous sweeps for hole cleaning. Set 8 5/8", 24# J-55 casing with 460 sx, Class C cement (lead will be 50/50 Poz, circulate to surface, 1" if necessary).
- c. Set slips on 8 5/8" CSG. Cut 8 5/8" CSG and NU & test BOP.
- d. Drill 7 7/8" production hole to 4594' kick-off point, using cut brine to an approximate depth of 4000' and a polymer mud system to TD.
- e. Pick up directional tools.
- f. Build angle at 12.9 degrees per 100' to 90 degrees and hold.
- g. Drill 7 7/8" horizontal drain hole to a terminus of 660' FEL.
- h. Run 5 1/2" 17# N-80 CSG to TD. Cement with enough volume to circulate to surface plus 25%. (Acid soluble CMT). Lead - 560 sacks 50:50 Poz (Fly Ash):Class C CMT + 10% Bentonite + 0.2% FL-52A + 0.2% Sodium Metasilicate + 141% fresh water. Tail - 560 sacks Class H CMT + 0.6% BA-10 + 0.4% CD-32 + 1% FL-62 + 0.1% ASA-301 + 0.4% Sodium Metasilicate + 20 lbs/sack calcium carbonate + 53% fresh water. Cement must tie back to surface casing per completion procedure.
- i. Rig Down Rotary Tools

LITTLE JOE 2020-4 FEDERAL #1

Page 3

5. MINIMUM SPECIFICATIONS FOR PRESSURE CONTROL

The BOP stack will consist of a 3,000 psi working pressure, dual ram type preventer and annular.

A BOP sketch is attached.

6. TYPES AND CHARACTERS OF THE PROPOSED MUD SYSTEM

- a. Spud and drill to 1,500' with 8.3 ppg Fresh Water system and viscous sweeps for hole cleaning.
- c. The production section from 1,500' to 4,000' will utilize a cut brine mud system.
- d. The remaining production section from 4,000' to TD will be a polymer mud system with mud weight sufficient to control formation pressures.

9.4 - 9.5

9.4 - 9.8

7. AUXILIARY WELL CONTROL AND MONITORING EQUIPMENT

None required.

8. LOGGING, TESTING, AND CORING PROGRAM

Mud logging is planned. Drill stem tests, as well as DLL/CNL/LDT/CAL/GR log, cores and sidewall cores are possible. No MWD GR will be used.

9. ABNORMAL CONDITIONS, PRESSURES, TEMPERATURES & POTENTIAL HAZARDS

None anticipated.

BHP expected to be 2,100 psi.

10. ANTICIPATED STARTING DATE:

It is planned that operations will commence around second quarter of 2007 with drilling and completion operation lasting about 30 days.

**SURFACE AND OPERATIONS PLAN FOR
DRILLING, COMPLETION, AND PRODUCING**

**PARALLEL PETROLEUM CORPORATION
LITTLE JOE 2020-4 FEDERAL #1
SHL: 1860' FNL AND 218' FWL, SEC 4, T20S, R20E
CHAVES COUNTY, NEW MEXICO**

Well will share a drilling location with the Hop Sing 2020-5 Federal #1

LOCATED:

15 miles South of Hope, New Mexico

OIL & GAS LEASE:

NM NM 115996

RECORD LESSEE:

Upland Corporation
P.O. Box 582
Midland, Texas 79702

BOND COVERAGE:

\$25,000 statewide bond # NMB000265 of Parallel Petroleum Corporation

ACRES IN LEASE:

2096.32

SURFACE OWNER:

Federal

SURFACE TENANT:

John Woodburn
P.O. Box 1477
Hope, NM 88250
505-687-4312

POOL:

Wolfcamp

LITTLE JOE 2020-4 FEDERAL #1

Page 2

EXHIBITS:

- A. Area Road Map
- B. Drilling Rig Layout
- C. Pad Elevation Plat
- D. Vicinity Map
- E. Area Production Map
- F. Topographic & Location Verification Map
- F-1. Topographic map of Cowboy Area access roads and locations
- G. Well Location & Acreage Dedication Map (NMOCD Form C-102)
- H. NMOCD Form C-144, Pit Registration (Original forwarded to NMOCD)
- I. Blow Out Preventer (BOP) Schematic
- J. Choke Manifold Schematic
- K. Estimated Horizontal Survey Calculation Program
- L. Estimated Wellbore Plot

1. EXISTING ROADS

- A. Exhibits A and D are area road maps showing existing roads in the vicinity of the site.
- B. Exhibit F and F-1 is a topographic map of the location showing existing roads and the proposed new access road.

2. ACCESS ROADS

A. Length and Width

The access road will be built as shown on Exhibit F and F-1. The existing access road will come off County Road 20 (Bronc Road) and go west 1.3 mile on a former Chaves County maintained road. At the fork take the right (north) road and go 1.9 mile to the location. All of these roads are existing two track ranch roads. The first 1.3 mile of road is formerly Chaves County maintained and improvement to the section of road will be coordinated with the Chaves County Road and Bridge Department. All of the access road will be surfaced with caliche and will be 16' to 24' wide with a total length of 2.7 miles.

B. Surface Material

Caliche from a commercial source.

C. Maximum Grade

Less than five percent.

D. Turnouts

No turnouts are planned for the access road.

E. Drainage Design

Two low water crossings will be constructed on this section of the access road.

F. Culverts

It is not anticipated that any culverts will be needed on the access road at this time.

G. Gates and Cattle Guards

Three cattle guards and gates will be installed on the fence lines in sections 16 and 5.

3. LOCATION OF EXISTING WELLS

Existing wells in the immediate area are shown in Exhibit "E".

4. LOCATION OF EXISTING AND/OR PROPOSED FACILITIES

Necessary production facilities for this well will be located on the well pad.

5. LOCATION AND TYPE OF WATER SUPPLY

A water well may be drilled on this location as water supply for both drilling and completion. Upon completion of operations on this site the well may be used for drilling of additional wells on this lease. The well will be made available for the surface tenant upon completion of drilling in this area to use as stock water. A permit will be secured from the New Mexico Office of the State Engineer for this water well. In the alternative, water will be secured and trucked or transported by poly line to the location from a commercial source.

6. METHODS OF HANDLING WASTE DISPOSAL

A. Drilling fluids will be allowed to dry in the drilling pits until the pits are closed.

B. Water produced during tests will be disposed of in the drilling pits.

C. Oil produced during tests will be stored in test tanks.

D. Trash will be contained in a trash trailer and removed from well site.

E. All trash and debris will be removed from the well site within 30 days after finishing drilling and/or completion operations.

- F. The reserve pit will be closed according to BLM and NMOCD regulations and guidelines. This will include leaving the drill cuttings in place in the pit, allowing them to dry, and covering the pit with at least 3' of backfill while not disturbing the pit liner. The cuttings may also be placed in a lined trench along side the drilling pit for disposal. If this disposal method is used the cuttings will be covered with a plastic liner and then covered with a minimum of 3' of backfill.

7. ANCILLARY FACILITIES

None required.

8. WELL SITE LAYOUT

Exhibit B shows the relative location and dimensions of the well pad, mud pits, reserve pit, and the location of major rig components. Drill site orientation is shown on Exhibit C.

9. PLANS FOR RESTORATION OF THE SURFACE

- A. After completion of drilling and/or completion operations, all equipment and other material that will not be used for lease operations will be removed from the site.
- B. After abandonment, all equipment, trash, and debris will be removed and the site will be reclaimed as according to BLM permit stipulations.

10. OTHER INFORMATION

A. Topography

The project is located on open, rolling ridge slopes, with Southeast exposure. The regional drainage of the site being to the south and east to an unnamed tributary of Sargent Canyon.

B. Soil

Soils are very thin and shallow, tan/pink/grey loamy sandy silts, overlying limestone bedrock.

C. Flora and Fauna

The location is located on a ridge and the vegetation consist of broom snakeweed, grasses, creosote, cholla, yucca catclaw, prickly pear, beargrass and various species of cacti.

LITTLE JOE 2020-4 FEDERAL #1

Page 5

D. Ponds and Streams

An unnamed tributary of Sargent Canyon, an intermittent stream which flows west to east, is located 1 mile south of the site. There are no other rivers, lakes, ponds, or streams in the area.

E. Residences and Other Structures

The Woodburn Ranch headquarters is located 2 miles south of the site.

F. Archaeological, Historical, and Cultural Sites

See archaeological report to be submitted by:

Southern New Mexico Archaeological Services, Inc.,
P.O. Box 1
Bent, New Mexico 88314 Phone 505-671-4797

G. Land Use

Grazing

H. Surface Ownership

Federal

11. OPERATOR'S REPRESENTATIVE

Deane Durham, Engineer
Parallel Petroleum Corporation
1004 North Big Spring Street, Suite 400
Midland, Texas 79701
Office: (432) 684-3727

12. CERTIFICATION

I hereby certify that I, or persons under my direct supervision, have inspected the proposed drill site and access route; that I am familiar with the conditions which presently exist; that the statements made in this plan are, to the best of my knowledge, true and correct; and, that the work associated with the operations proposed herein will be performed by Parallel Petroleum Corporation and its contractors and subcontractors in conformity with this plan and the terms and conditions under which it is approved.

1-8-07

Date

Deane Durham

Name: Deane Durham

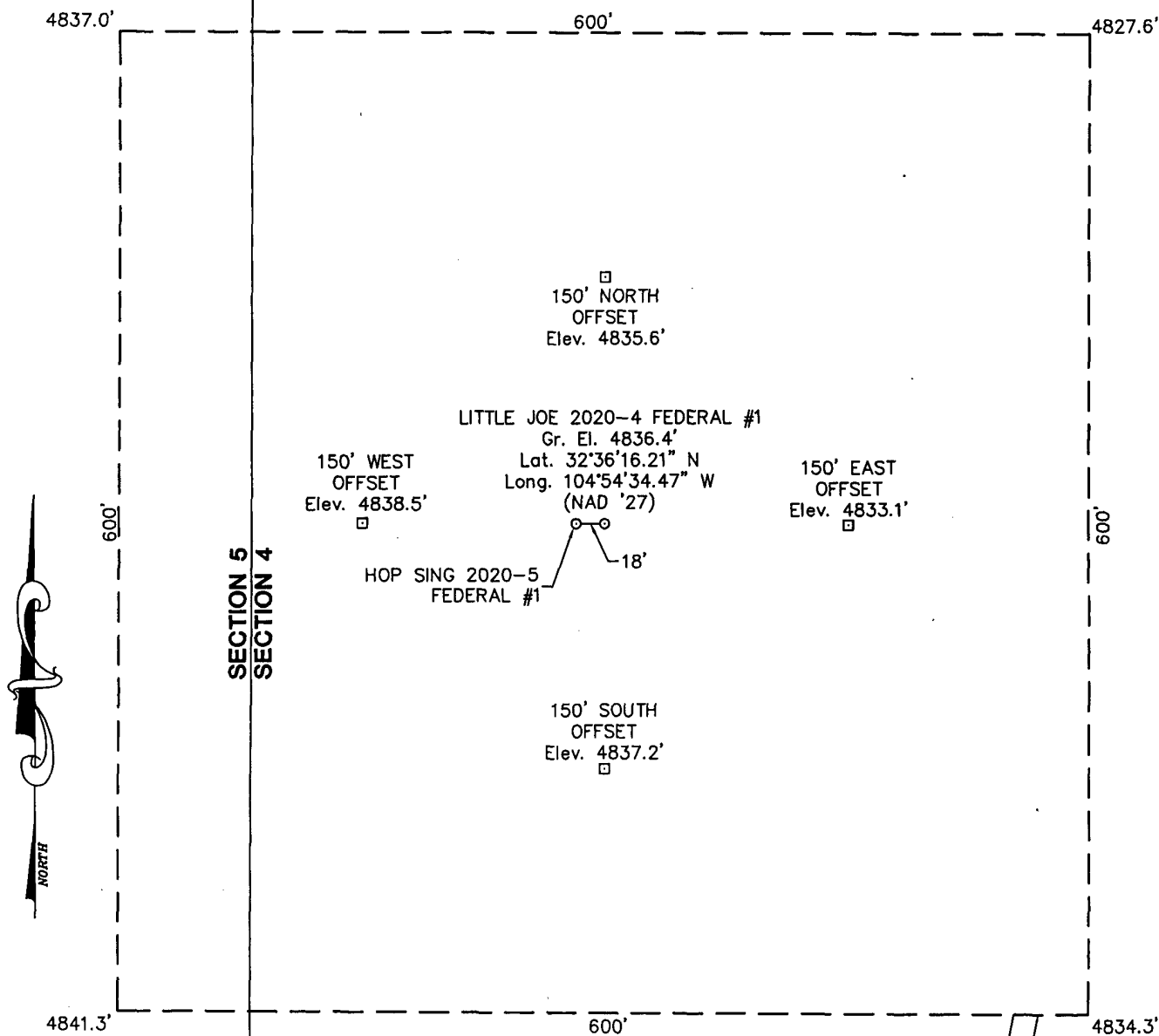
Title: Engineer

SECTION 4, TOWNSHIP 20 SOUTH, RANGE 20 EAST, N.M.P.M.

CHAVES COUNTY

NEW MEXICO

L-2006-1284-A



1982 L.F. OF NEW ACCESS ROAD



DRIVING DIRECTIONS

FROM THE INTERSECTION OF U.S. HIGHWAY 82 AND STATE HIGHWAY 449 IN HOPE, NM GO SOUTH ON SAID STATE HIGHWAY 449 2.2 MILES TO THE END OF SAID STATE HIGHWAY 449 AND THE BEGINNING OF COUNTY ROAD 12, THEN CONTINUE SOUTH ANOTHER 4.8 MILES (6.9 TOTAL) TO A FORK IN THE ROAD, THE INTERSECTION OF SAID COUNTY ROAD 12 AND A LEASE ROAD HEADING SOUTHWEST (RIGHT FORK), THEN GO SOUTHWEST ALONG SAID LEASE ROAD 15.0 MILES TO A NEW ACCESS ROAD ON NORTH (RIGHT) SIDE OF ROAD, THEN GO NORTHEAST ALONG SAID ACCESS ROAD 3.2 MILES TO THE PROPOSED LOCATION.

PARALLEL PETROLEUM CORPORATION

LITTLE JOE 2020-4 FEDERAL #1

Located 1860' FNL & 218' FWL, Section 4
Township 20 South, Range 20 East, N.M.P.M.
Chaves County, New Mexico

| | |
|--------------------|-------------------------------|
| Drawn By: LVA | Date: December 21, 2006 |
| Scale: 1"=100' | Field Book: 348 / 64-66 |
| Revision Date: | Quadrangle: South Taylor Tank |
| W.O. No: 2006-1284 | Dwg. No.: L-2006-1284-A |



110 W. LOUISIANA, STE. 110
MIDLAND TEXAS, 79701
(432) 687-0865 - (432) 687-0868 FAX

EXHIBIT C

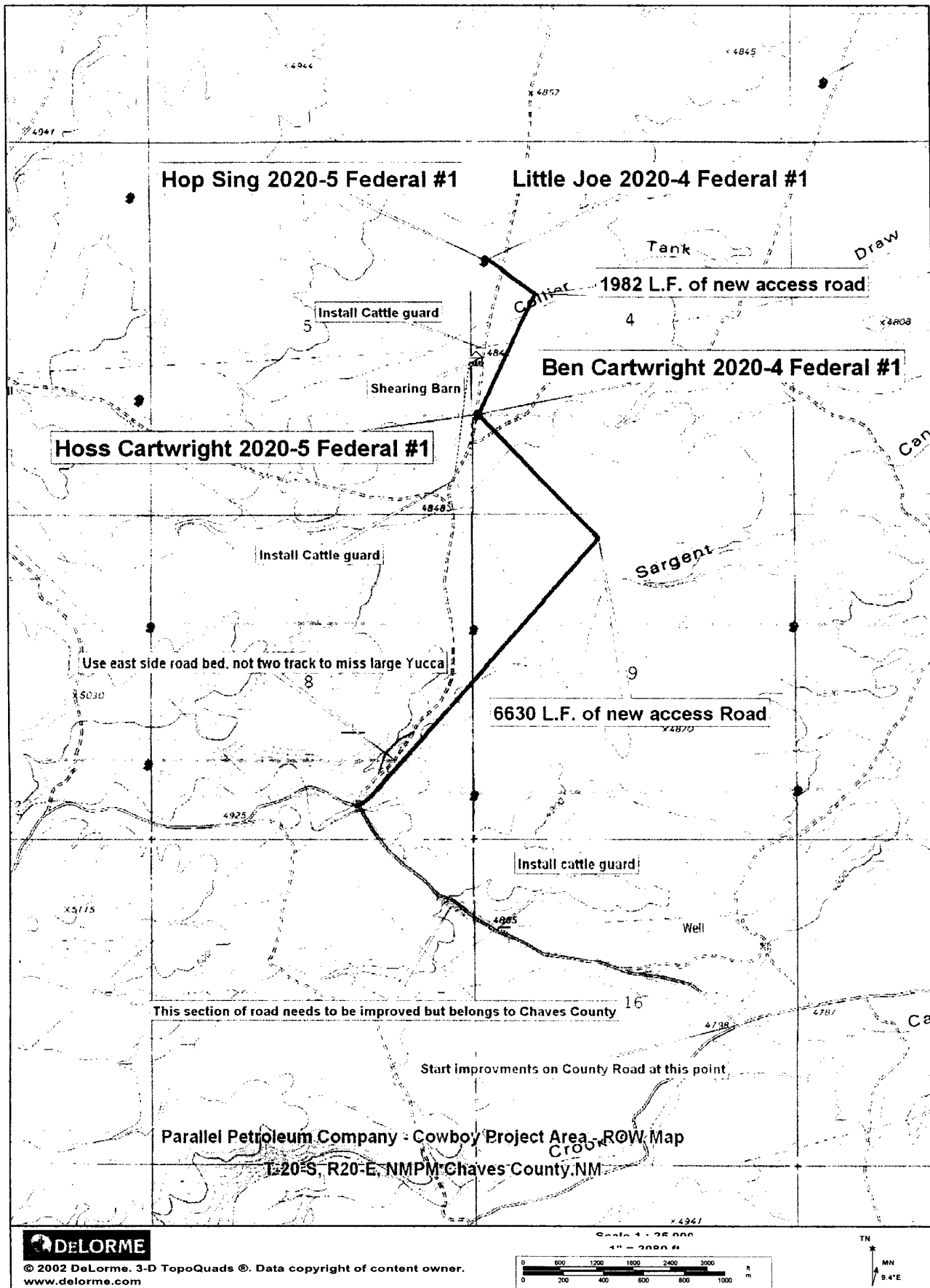


EXHIBIT F-1

MINIMUM BOP SCHEMATIC

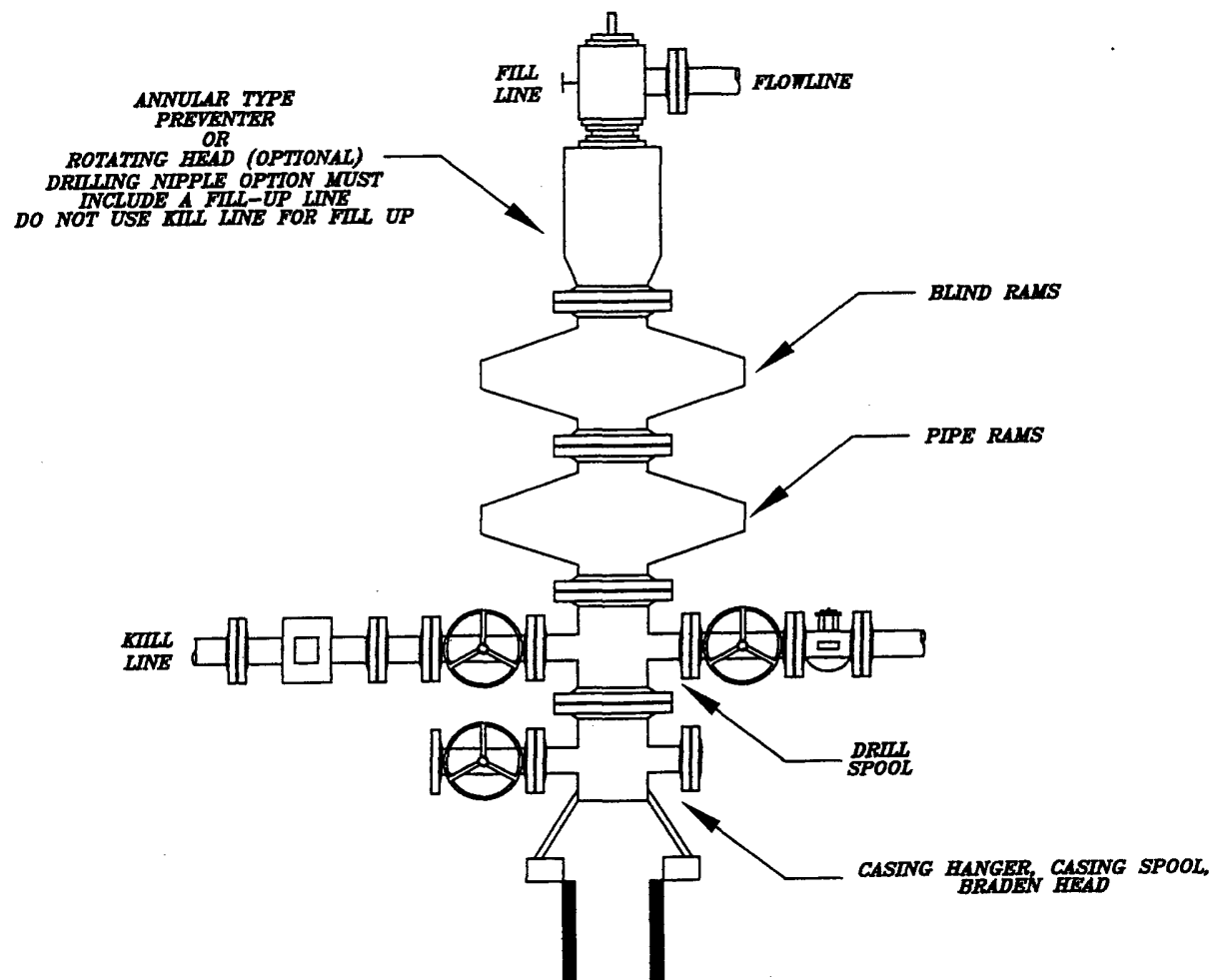


EXHIBIT I

PARALLEL PETROLEUM
BOP SCHEMATIC

HIGHLANDER ENVIRONMENTAL CORP.
MIDLAND, TEXAS

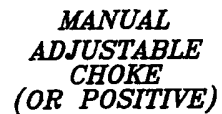
DATE:
7/26/05

DRN. BY:
JJ

FILE:
C:\P\HILLMAN\BOP
BOP SCHEMATIC

NOT TO SCALE

37



DATE: 8/17/05
OWN. BY: JJ
FILE: G:\PARALL\2429
CHORE NIMFOLD

PARALLEL PETROLEUM CHOKE MANIFOLD

HIGHLANDER ENVIRONMENTAL CORP.
MIDLAND, TEXAS

SURVEY CALCULATION PROGRAM

PETROLEUM CORPORATION

| | | | | |
|-------------|--------------------------------|--|-------------------|-----|
| OPERATOR: | Parallel Petroleum Corporation | | Supervisors: | |
| WELL: | Little Joe 2020-4 Federal #1 | | | |
| LOCATION: | Sec. 4 T-20-S R-20-E | | | |
| API NUMBER: | | | | |
| COMMENTS: | | | | |
| | | | | |
| | | | | |
| | | | | |
| | | | MAG DEC. (-/+) | |
| | | | GRID CORR. (-/+) | |
| | | | TOTAL CORR. (-/+) | 0.0 |

| | | | |
|----------------|---------------|--------------|---|
| DATE: 01/05/07 | TIME: 8:37 AM | TRUE TO GRID | ▼ |
|----------------|---------------|--------------|---|

| MINIMUM CURVATURE CALCULATIONS(SPE-3382) | | | | | | PROPOSED DIRECTION | | 90.0 | TARGET TRACKING | |
|--|------|------|------|--------|--------|--------------------|--------|------|-----------------|----------|
| | | | | | | | | | TO CENTER | |
| SVY | | | GRID | | VERT | | | DLS/ | ABOVE(+) | RIGHT(+) |
| NUM | MD | INC | AZM | TVD | SECT | N-S | E-W | 100 | BELOW(-) | LEFT(-) |
| TIE | 0 | 0.0 | 0.0 | 0.0 | 0.0 | 0.0 | 0.0 | | | |
| 1 | 4594 | 0.0 | 0.0 | 4594.0 | 0.0 | 0.0 | 0.0 | 0.0 | 443.0 | 0.0 |
| 2 | 4604 | 1.3 | 90.0 | 4604.0 | 0.1 | 0.0 | 0.1 | 12.9 | 433.0 | 0.0 |
| 3 | 4614 | 2.6 | 90.0 | 4614.0 | 0.5 | 0.0 | 0.5 | 12.9 | 423.0 | 0.0 |
| 4 | 5290 | 90.0 | 90.0 | 5037.1 | 443.1 | 0.0 | 443.1 | 12.9 | -0.1 | 0.0 |
| 5 | 9249 | 90.0 | 90.0 | 5037.1 | 4402.1 | 0.0 | 4402.1 | 0.0 | -0.1 | 0.0 |

KOP @ 4594' MD
BUR = 12.9 DEG per 100 FT
End Curve @ 5290' MD, 5037' TVD
BHL @ 9249' MD, 5037' TVD, 4402' VS

Parallel Petroleum Corp.

Little Joe 2020-4 Federal #1
Sec. 4, T-20-S, R-20-E
Eddy County, New Mexico

COMPANY DETAILS

Parallel Petroleum Corp.
1004 N. Big Spring, Ste 400
Midland, Texas 79701

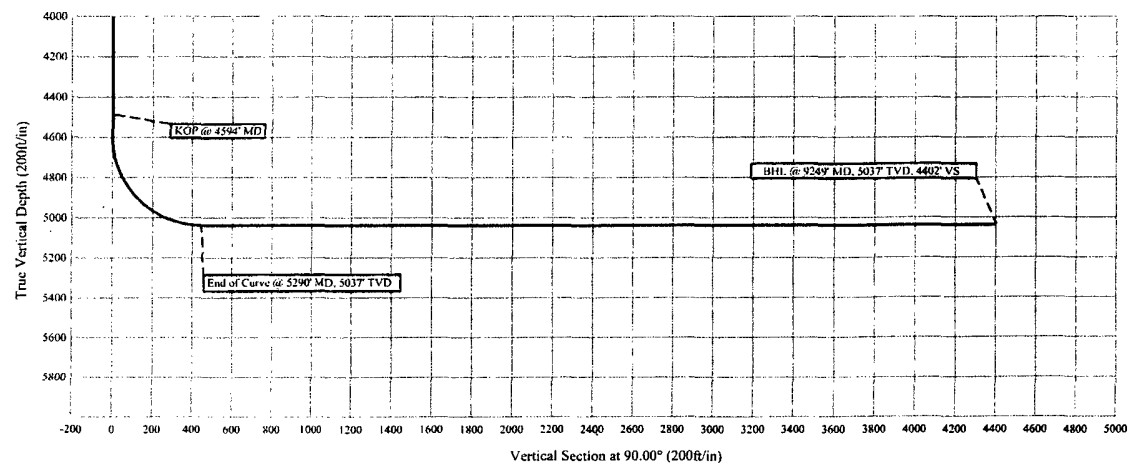
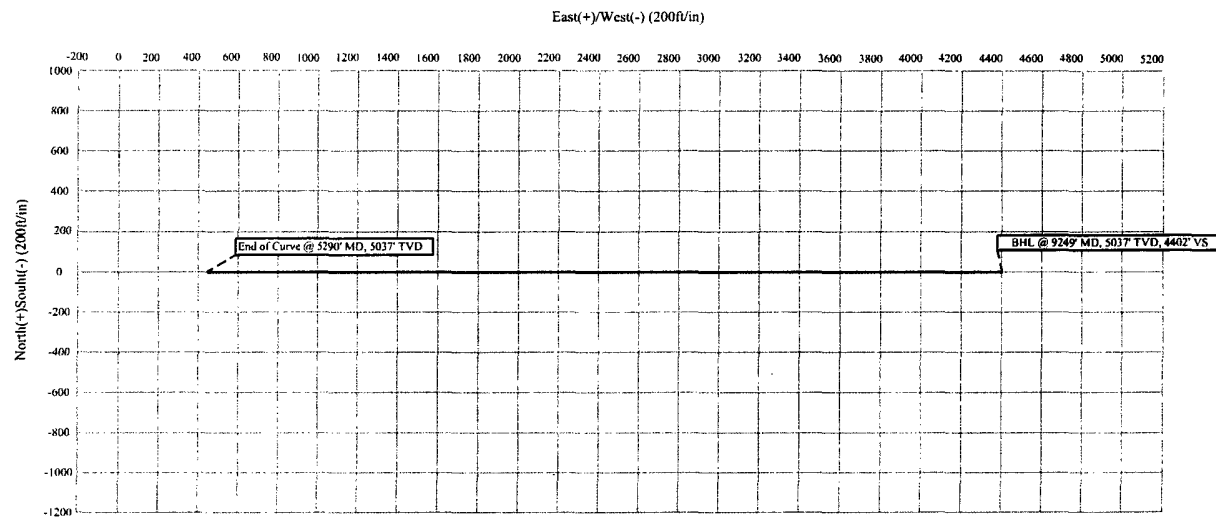


EXHIBIT L



PARALLEL

Petroleum Corporation

1004 North Big Spring, Suite 400 • Midland, TX 79701 • Ph: 432-684-3727 • Fax: 432-685-6580

June 12, 2006

Mr. Bryan Arrant
New Mexico Oil Conservation Division
1301 W. Grand Ave.
Artesia, New Mexico 88210

Re: Hydrogen Sulfide Potential
South Hope Area Wolfcamp Program
SW Chaves and Eddy Counties, New Mexico

Dear Mr. Arrant:

Parallel Petroleum Corporation operates the Boxtop 1921-1 Federal #1 well located in Section 1, T-19-S, R-21-E. The well which was tested in the Wolfcamp formation did not have any indications of hydrogen sulfide from this formation. We believe the potential for it on locations in this area are negligible. There are no occupied dwellings in the area of these new drilling locations.

Should you need any additional information regarding this issue, please contact me at the address or phone number listed or email at ddurham@ppll.com.

Sincerely,

A. Deane Durham
Senior Engineer

CONDITIONS OF APPROVAL - DRILLING

Well Name & No. 1-Little Joe 2020-4 Federal
Operator's Name: Parallel Petroleum Corporation
Location SHL: 1860FNL, 0218FWL, Section 4, T-20-S, R-20-E
Location BHL: 1860FNL, 0660FEL, Section 4, T-20-S, R-20-E
Lease: NMNM 115996

I. DRILLING OPERATIONS REQUIREMENTS:

1. The Bureau of Land Management (BLM) is to be notified at the Carlsbad Field Office, 620 East Greene St., Carlsbad, NM 88220, (505) 361-2822 - for wells in Eddy County; and the Hobbs Field Station, 414 West Taylor, Hobbs NM 88240, (505) 393-3612 for wells in Lea County, in sufficient time for a representative to witness:

A. Spudding

B. Cementing casing: 8-5/8 inch 5-1/2 inch

C. BOP tests

2. Hydrogen Sulfide is always a potential hazard. Minor amounts less than 10 ppm have been reported in STVs in the surrounding area.

3 Unless the production casing has been run and cemented or the well has been properly plugged, the drilling rig shall not be removed from over the hole without prior approval.

4. Submit a Sundry Notice (Form 3160-5, one original and five copies) for each casing string, describing the casing and cementing operations. Include pertinent information such as; spud date, hole size, casing (size, weight, grade and thread type), cement (type, quantity and top), water zones and problems or hazards encountered. The Sundry shall be submitted within 15 days of completion of each casing string. The reports may be combined into the same Sundry if they fall within the same 15 day time frame.

5. The API No. assigned to the well by NMOCD shall be included on the subsequent report of setting the first casing string.

6. Gamma-Ray/Neutron logs shall be run from the base of the Salado Formation to the surface; cable speed not to exceed 30 feet per minute.

II. CASING:

NB! If equivalent or adequate grades of casing are substituted, these must be API grade and a sundry noting the change is to be submitted.

1. The 8-5/8 inch surface casing shall be set at approximately 1500 feet, below usable water and cement circulated to the surface. If cement does not circulate to the surface the appropriate BLM office shall be notified and a temperature survey or cement bond log shall be run to verify the top of the cement. Remedial cementing shall be completed prior to drilling out that string.

Possible lost circulation in the San Andres, Glorieta, and Wolfcamp formations.

2. The minimum required fill of cement behind the 5-1/2 inch production casing is cement shall extend a minimum of 200' inside the surface casing.

III. PRESSURE CONTROL:

1. All BOP systems and related equipment shall comply with well control requirements as described in Onshore Oil and Gas Order No. 2. The BOP and related equipment shall be installed and operational before drilling below the 8-5/8 inch casing shoe and shall be tested as described in Onshore Order No. 2. Any equipment failing to test satisfactorily shall be repaired or replaced.
2. Minimum working pressure of the blowout preventer and related equipment (BOPE) is 3M psi.
3. The appropriate BLM office shall be notified in sufficient time for a representative to witness the tests.
 - The tests shall be done by an independent service company.
 - The results of the test shall be reported to the appropriate BLM office.
 - Testing fluid must be water or an appropriate clear liquid suitable for sub-freezing temperatures. Use of drilling mud for testing is not permitted since it can mask small leaks.
 - Testing must be done in a safe workman-like manner. Hard line connections shall be required.

Engineer on call phone: 505-706-2779

WWI 012907