

**marbob**  
energy corporation

February 16, 2007

New Mexico Oil Conservation Division  
1301 W. Grand Ave.  
Artesia, New Mexico 87504

Attention: Mr. Tim Gumm



Re: Unorthodox Location  
Administrative Approval Request  
Burch Keely Unit #988  
250' FNL & 2130' FWL  
Section 19 T-17S R-30E  
Eddy County, New Mexico

30 - 015 - 35441

Dear Mr. Gumm:

Marbob Energy Corporation respectfully requests administrative approval for an unorthodox location of the Burch Keely Unit #988 well as referenced above. Attached is an OCD Form C-102 showing the proposed oil well spacing unit along with a map showing the adjoining spacing units. The well is unorthodox to the north boundary of the NE/4NW/4. The affected spacing unit is included in the Burch Keely Federal Unit which covers all of Section 18 & 19. Notice has been provided to the operator and working interest owners of that unit.

This location will also increase our secondary/tertiary flood pattern options and give us more flexibility to modify or change flood patterns in the future to maximize oil recovery from this unit. The surface problem encountered was cultural but the fifty foot move was perceived as a reasonable compromise and this was the only acceptable location to the archeologist.

Thank you for your consideration of this. If you need to talk with me further please call me at 1-800-748-1550.

Sincerely,

William Miller  
Land Department

/wm  
Attachments

BRYAN G. ARRANT  
DISTRICT II GEOLOGIST

MAR 05 2007

7750 E. Near-burg  
to 5000'  
WEBB OIL(OPER.)

(H.E. Ware, Jr.)  
Cecil Rhodes,  
(Amer. Quaker)  
Anderson-  
Fed. Disc. 7752  
Parker Forsley  
7752  
Lockhart  
Fr. 5000' Miller  
Gen. Amer.  
9/R

Marbob 7  
Burch  
T/A  
(Phillips)  
Windföhr, etal)  
Marbob  
05067  
"Burch"  
Marbob  
028793  
275  
P22  
868  
27  
(701144)

282 3  
92  
S.I.  
220  
247 93  
246  
95  
245 94  
229  
96  
P9 274  
98  
270  
37.41 4  
276 105  
Marbob  
231  
104  
028784  
256  
103  
250  
279  
028792  
101  
104  
291  
102  
Marbob  
285  
101  
064

37.41 4  
276 105  
Marbob  
231  
104  
028784  
256  
103  
250  
279  
028792  
101  
104  
291  
102  
Marbob  
285  
101  
064  
37.41 4  
276 105  
Marbob  
231  
104  
028784  
256  
103  
250  
279  
028792  
101  
104  
291  
102  
Marbob  
285  
101  
064

37.41 4  
276 105  
Marbob  
231  
104  
028784  
256  
103  
250  
279  
028792  
101  
104  
291  
102  
Marbob  
285  
101  
064  
37.41 4  
276 105  
Marbob  
231  
104  
028784  
256  
103  
250  
279  
028792  
101  
104  
291  
102  
Marbob  
285  
101  
064

GP II Ener.  
etal  
Shahara  
"F"

(Gen Amer)  
SIR  
Allied Chem, etal  
HBP  
05067  
[SQUARE LAKE 12 UT.  
(GRAYBURG)]

Marbob Energy Corporation  
Attachment to Application for Unorthodox Location  
Burch Keely Unit #988  
Unit C, Section 19 - T17S - R30E  
Eddy County, New Mexico

- Burch Keely Unit #988
- Burch Keely Unit #988 Spacing Unit
- Affected Offset Spacing Unit
- Offset Spacing Units

Marbob  
Burch  
T/A  
(Phillips)  
Windföhr, etal)  
Marbob  
05067  
"Burch"  
Marbob  
028793  
275  
P22  
868  
27  
(701144)

37.41 4  
276 105  
Marbob  
231  
104  
028784  
256  
103  
250  
279  
028792  
101  
104  
291  
102  
Marbob  
285  
101  
064  
37.41 4  
276 105  
Marbob  
231  
104  
028784  
256  
103  
250  
279  
028792  
101  
104  
291  
102  
Marbob  
285  
101  
064

37.41 4  
276 105  
Marbob  
231  
104  
028784  
256  
103  
250  
279  
028792  
101  
104  
291  
102  
Marbob  
285  
101  
064  
37.41 4  
276 105  
Marbob  
231  
104  
028784  
256  
103  
250  
279  
028792  
101  
104  
291  
102  
Marbob  
285  
101  
064

MNA Ent. Gen Amer Newman Chevron  
HBP  
8 4108

065524 121342  
Repelle  
McMire  
T0328  
P50  
"A.R. Co. Fed."  
Seely Oil  
34.4%  
P84

Marbob  
Burch  
T/A  
(Phillips)  
Windföhr, etal)  
Marbob  
05067  
"Burch"  
Marbob  
028793  
275  
P22  
868  
27  
(701144)

37.41 4  
276 105  
Marbob  
231  
104  
028784  
256  
103  
250  
279  
028792  
101  
104  
291  
102  
Marbob  
285  
101  
064  
37.41 4  
276 105  
Marbob  
231  
104  
028784  
256  
103  
250  
279  
028792  
101  
104  
291  
102  
Marbob  
285  
101  
064

37.41 4  
276 105  
Marbob  
231  
104  
028784  
256  
103  
250  
279  
028792  
101  
104  
291  
102  
Marbob  
285  
101  
064  
37.41 4  
276 105  
Marbob  
231  
104  
028784  
256  
103  
250  
279  
028792  
101  
104  
291  
102  
Marbob  
285  
101  
064

37.41 4  
276 105  
Marbob  
231  
104  
028784  
256  
103  
250  
279  
028792  
101  
104  
291  
102  
Marbob  
285  
101  
064  
37.41 4  
276 105  
Marbob  
231  
104  
028784  
256  
103  
250  
279  
028792  
101  
104  
291  
102  
Marbob  
285  
101  
064

GP II Ener.  
etal  
Shahara  
"F"

DISTRICT I  
1625 N. FRENCH DR., HOBBBS, NM 86240

DISTRICT II  
1301 W. GRAND AVENUE, ARTESIA, NM 86210

DISTRICT III  
1000 Rio Brazos Rd., Aztec, NM 87410

DISTRICT IV  
1220 S. ST. FRANCIS DR., SANTA FE, NM 87505

State of New Mexico  
Energy, Minerals and Natural Resources Department

OIL CONSERVATION DIVISION  
SOUTH ST. FRANCIS DR.  
Santa Fe, New Mexico 87505



Form C-102  
Revised October 12, 2005  
Submit to Appropriate District Office  
State Lease - 4 Copies  
Fee Lease - 3 Copies

WELL LOCATION AND ACREAGE DEDICATION PLAT

☐ AMENDED REPORT

API Number	Pool Code 28509	Pool Name GRBG JACKSON SR Q GRBG SA
Property Code	Property Name BURCH KEELY UNIT	Well Number 988
GRID No. 14049	Operator Name MARBOB ENERGY CORPORATION	Elevation 3629'

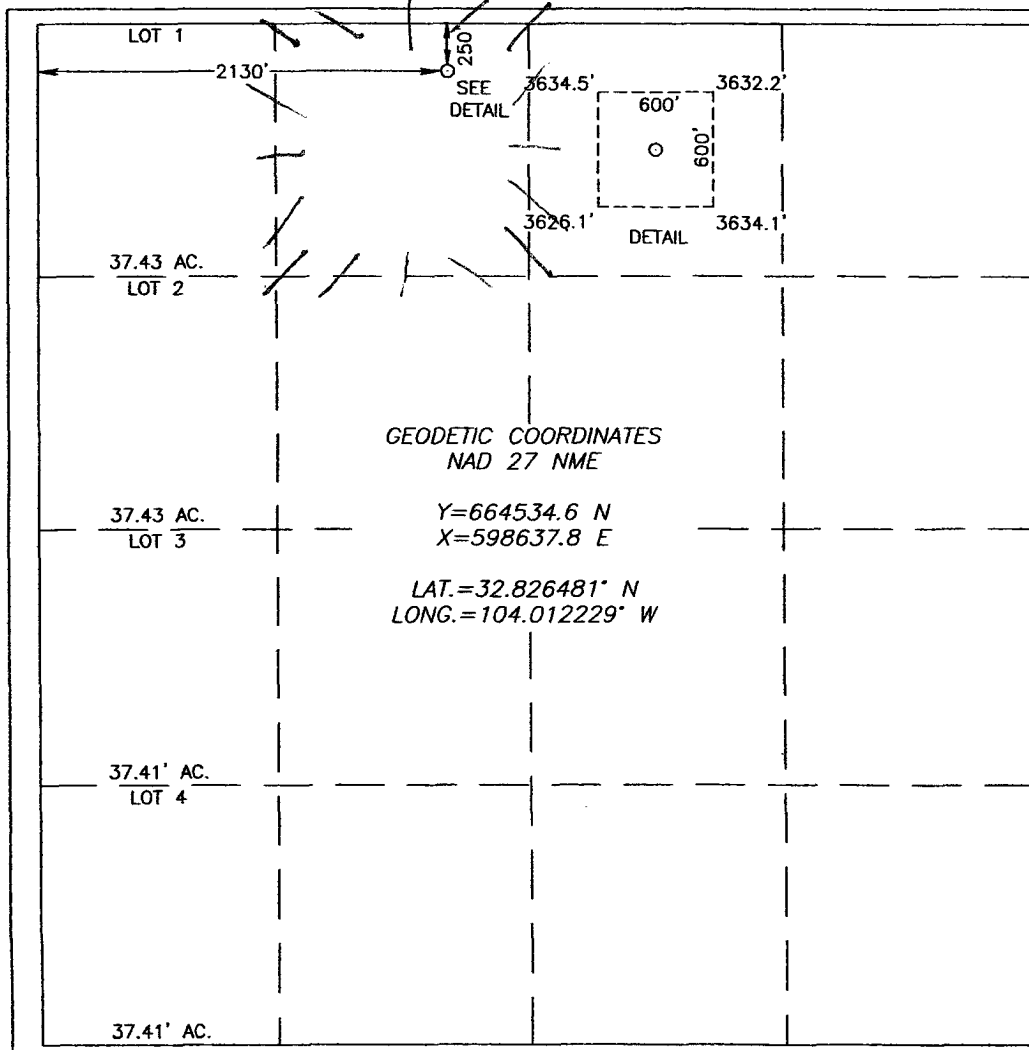
Surface Location

UL or lot No. C	Section 19	Township 17-S	Range 30-E	Lot Idn	Feet from the 250	North/South line NORTH	Feet from the 2130	East/West line WEST	County EDDY
--------------------	---------------	------------------	---------------	---------	----------------------	---------------------------	-----------------------	------------------------	----------------

Bottom Hole Location If Different From Surface

UL or lot No.	Section	Township	Range	Lot Idn	Feet from the	North/South line	Feet from the	East/West line	County
Dedicated Acres 40	Joint or Infill	Consolidation Code	Order No.						

NO ALLOWABLE WILL BE ASSIGNED TO THIS COMPLETION UNTIL ALL INTERESTS HAVE BEEN CONSOLIDATED  
OR A NON-STANDARD UNIT HAS BEEN APPROVED BY THE DIVISION



OPERATOR CERTIFICATION

I hereby certify that the information herein is true and complete to the best of my knowledge and belief, and that this organization either owns a working interest or unleased mineral interest in the land including the proposed bottom hole location or has a right to drill this well at this location pursuant to a contract with an owner of such mineral or working interest, or to a voluntary pooling agreement or a compulsory pooling order heretofore entered by the division.

Nancy T. Agnew 11/3/07  
Signature Date

Nancy T. Agnew  
Printed Name

SURVEYOR CERTIFICATION

I hereby certify that the well location shown on this plat was plotted from field notes of actual surveys made by me or under my supervision, and that the same is true and correct to the best of my belief.

NOVEMBER 10, 2006

Date Surveyed DSR  
Signature & Seal of Professional Surveyor

Gary E. Edson 12/5/06  
06.11.1774

Certificate No. GARY EIDSON 12641



---

**marbob**  
energy corporation

---

February 16, 2007



Marbob Energy Corp..  
P.O. Box 227  
Artesia, NM 88221-0227

RE: Unorthodox Surface Location  
Administrative Approval

Request

Burch Keely #988  
250' FNL & 2130' FWL  
Section 19, T-17S R-30E  
Eddy County, New Mexico

Gentlemen:

This letter will serve as notice of our application for the above described unorthodox location. A copy of the complete application is enclosed for your review. If you object to this application please advise OCD Santa Fe in a timely manner. If you do not object no action is required on your part. If you have any questions regarding this please contact me.

Sincerely,

William Miller  
Land Department

/wm  
Enclosures