

DISTRICT I
1626 N. French Dr., Hobbs, NM 88240

DISTRICT II
1301 W. Grand Avenue, Artesia, NM 88210

DISTRICT III
1000 Rio Brazos Rd., Aztec, NM 87410

DISTRICT IV
1220 S. St. Francis Dr., Santa Fe, NM 87505

State of New Mexico
Energy, Minerals and Natural Resources Department

Form C-102
Revised October 12, 2005

Submit to Appropriate District Office
State Lease - 4 Copies
Fee Lease - 3 Copies

OIL CONSERVATION DIVISION
1220 South St. Francis Dr.
Santa Fe, New Mexico 87505

☐ AMENDED REPORT

WELL LOCATION AND ACREAGE DEDICATION PLAT

API Number 30-015-35557	Pool Code 96819	Pool Name Salt Draw; McNew West
Property Code 36462	Property Name COLT STATE	Well Number 1
OGRUD No.	Operator Name OGX RESOURCES, L.L.C.	Elevation 3029'

Surface Location

UL or lot No.	Section	Township	Range	Lot Idn	Feet from the	North/South line	Feet from the	East/West line	County
2 E	5	25 S	28 E	2	1980	NORTH	660	WEST	EDDY

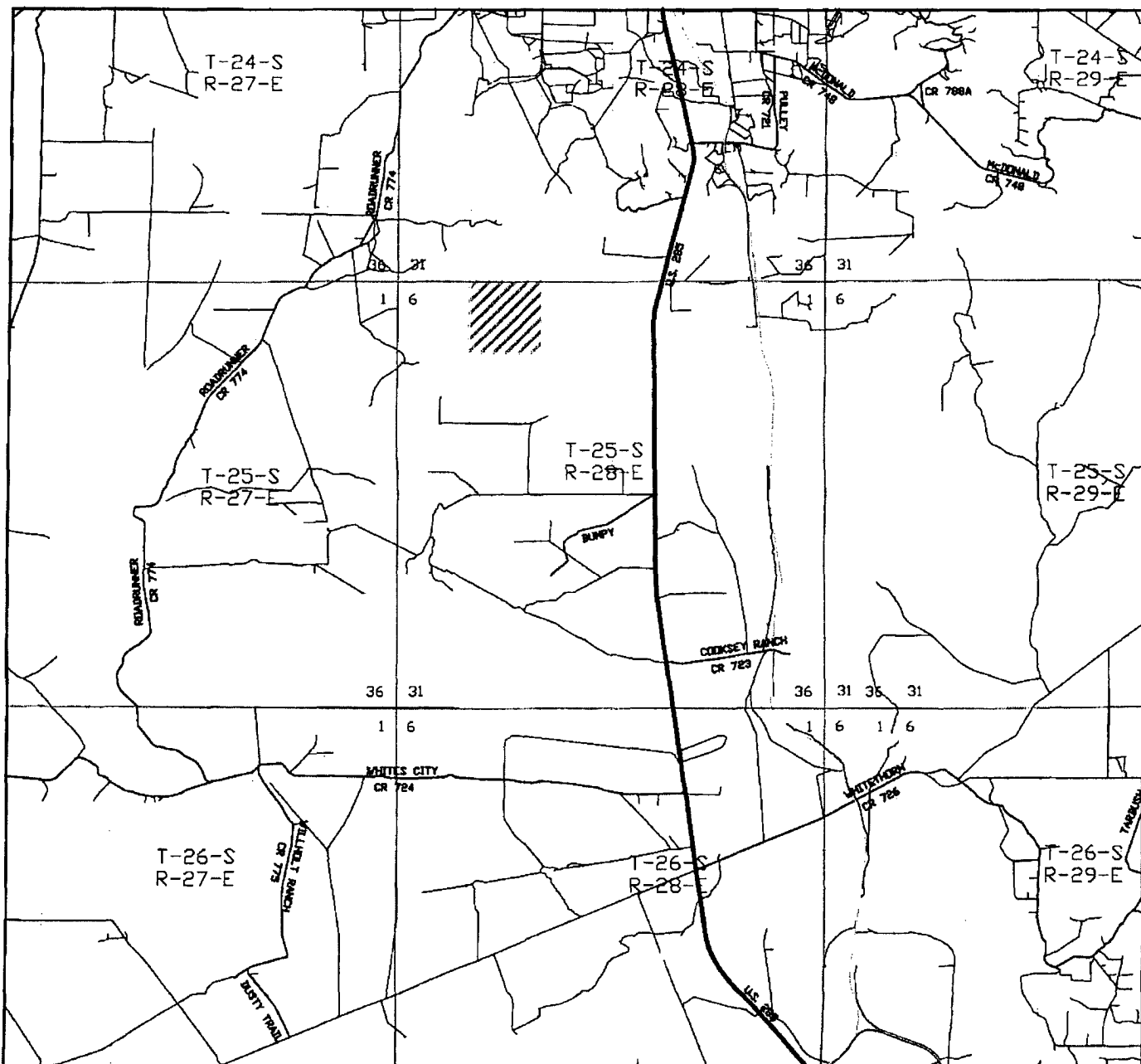
Bottom Hole Location If Different From Surface

UL or lot No.	Section	Township	Range	Lot Idn	Feet from the	North/South line	Feet from the	East/West line	County

Dedicated Acres 320	Joint or Infill	Consolidation Code	Order No.
-------------------------------	-----------------	--------------------	-----------

NO ALLOWABLE WILL BE ASSIGNED TO THIS COMPLETION UNTIL ALL INTERESTS HAVE BEEN CONSOLIDATED
OR A NON-STANDARD UNIT HAS BEEN APPROVED BY THE DIVISION

	<p>OPERATOR CERTIFICATION</p> <p>I hereby certify that the information contained herein is true and complete to the best of my knowledge and belief, and that this organization either owns a working interest or unleased mineral interest in the land including the proposed bottom hole location pursuant to a contract with an owner of such a mineral or working interest, or to a voluntary pooling agreement or a compulsory pooling order heretofore entered by the division.</p> <p><i>Angela Lightner</i> 4-17-01 Signature Date</p> <p><i>Angela Lightner</i> Printed Name</p>
	<p>SURVEYOR CERTIFICATION</p> <p>I hereby certify that the well location shown on this plat was plotted from field notes of actual surveys made by me or under my supervision and that the same is true and correct to the best of my belief.</p> <p>MARCH 10, 2007</p> <p>Date Signature: <i>Gary L. Jones</i> Professional Surveyor 7977</p>
	<p>Certificate No. Gary L. Jones 7977</p>
	<p>BASIN SURVEYS</p>



THE COLT STATE #1
 Located at 1980' FNL and 660' FWL
 Section 5, Township 25 South, Range 28 East,
 N.M.P.M., Eddy County, New Mexico.

basin
surveys
 focused on excellence
 in the oilfield

P.O. Box 1786
 1120 N. West County Rd.
 Hobbs, New Mexico 88241
 (505) 393-7316 - Office
 (505) 392-3074 - Fax
 basin-surveys.com

W.O. Number: JMS 17770TR

Survey Date: 03-10-2007

Scale: 1" = 2 MILES

Date: 03-12-2007

OGX
 RESOURCES,
 L.L.C.

SECTION 5, TOWNSHIP 25 SOUTH, RANGE 28 EAST, N.M.P.M.,
EDDY COUNTY, NEW MEXICO.

150' NORTH
OFF SET
3029.5'
□

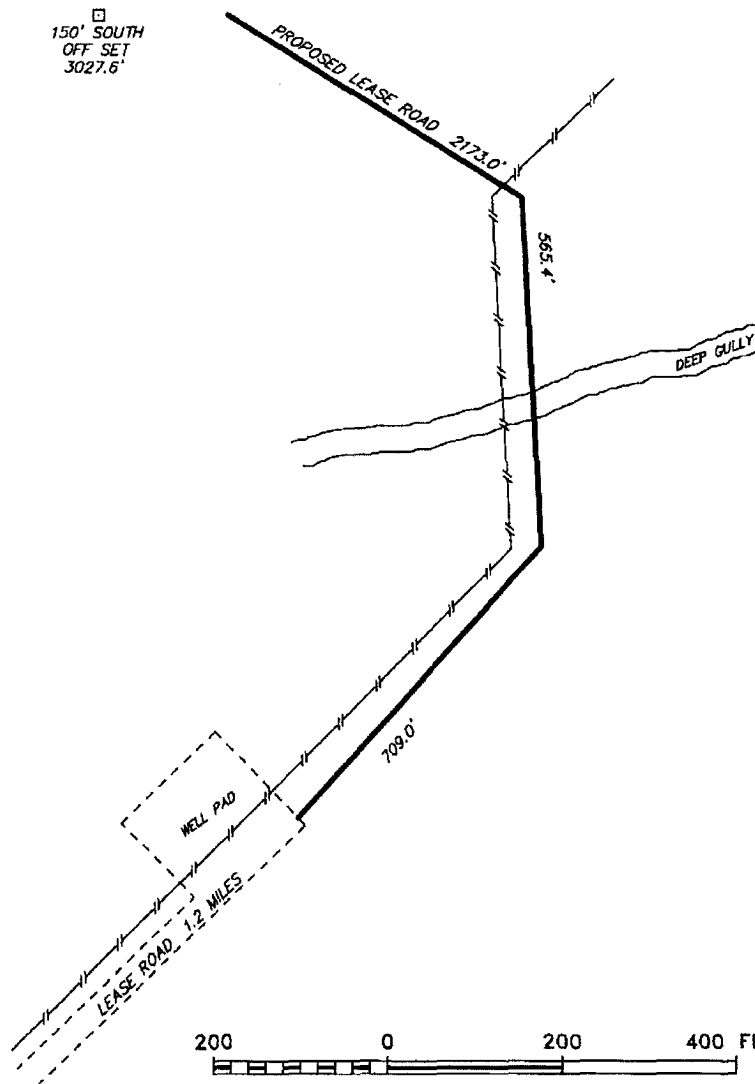
OGX RESOURCES, L.L.C.
COLT STATE #1
ELEV. - 3029'

150' WEST
OFF SET □
3030.3'

150' EAST
OFF SET □
3027.3'

LAT-N 32°09'40.0"
LONG-W 104°06'58.2"
(NAD-83)

150' SOUTH
OFF SET
3027.6'
□



DIRECTIONS TO LOCATION:

FROM MILE MARKER 9 OF U.S. HWY 285, PROCEED
NORTH 0.1 MILES TO LEASE ROAD, ON LEASE ROAD
GO WEST 1.7 MILES; THENCE NORTH 0.9 MILES,
THENCE WEST 1.2 MILES, THENCE NORTH 0.3 MILES,
TO OGX WELL, THENCE GO NORTHEAST 1.2 MILES TO
WELL PAD AND PROPOSED LEASE ROAD.

200 0 200 400 FEET
SCALE: 1" = 200'

OGX RESOURCES, L.L.C.

REF: COLT STATE #1 / Well Pad Topo

THE COLT STATE No. 1 LOCATED 1980' FROM
THE NORTH LINE AND 660' FROM THE WEST LINE OF
SECTION 5, TOWNSHIP 25 SOUTH, RANGE 28 EAST,
N.M.P.M., EDDY COUNTY, NEW MEXICO.

Basin Surveys P.O. BOX 1786 - HOBBS, NEW MEXICO

W.O. Number: 17770

Drawn By: J. M. SMALL

Date: 03-12-2007

Disk: JMS 17770W

Survey Date: 03-10-2007

Sheet 1 of 1 Sheets