

Submit To Appropriate District Office
State Lease - 6 copies
Fee Lease
District I
1625 N. Ranch Dr., Hobbs, NM 88240
District II
1301 W. Grand Ave., Artesia, NM 88210
District III
1000 Rio Grande, Aztec, NM 87410
District IV
1220 S. St. Francis Dr., Santa Fe, NM 87505

State of New Mexico
Energy, Minerals and Natural Resources

Oil Conservation Division
1220 South St. Francis Dr.
Santa Fe, NM 87505

Form C-105
Revised June 10, 2003

WELL API NO.
30-015-34634

5. Indicate Type of Lease
STATE ☒ FEE ☐

State Oil & Gas Lease No.

WELL COMPLETION OR RECOMPLETION REPORT AND LOG

1a. Type of Well:
OIL WELL ☒ GAS WELL ☐ DRY ☐ OTHER ☐

1b. Type of Completion:
NEW ☒ WORK ☐ DEEPEN ☐ PLUG ☐ DIFF. ☐
WELL OVER BACK REVR. ☐

2. Name of Operator
BEPCO, L.P.

3. Address of Operator
P.O. BOX 2760 MIDLAND, TX 79702-2760

4. Well Location
Unit Letter **H** : **1730** Feet From The **NORTH** Line and **860** Feet From The **EAST** Line
Section **24** Township **23S** Range **29E** NMPM **EDDY** County

10. Date Spudded
09/26/2006

11. Date T.D. Reached
10/10/2006

12. Date Compl. (Ready to Prod.)
11/01/2006

13. Elevations (DF& RKB, RT, GR, etc.)
3018' GR

14. Elev. Casinghead

15. Total Depth
7243'

16. Plug Back T.D.
7157'

17. If Multiple Compl. How Many Zones?
1

18. Intervals Drilled By
X

Rotary Tools

Cable Tools

19. Producing Interval(s), of this completion - Top, Bottom, Name
6808' - 7100' - DELAWARE

20. Was Directional Survey Made
YES

21. Type Electric and Other Logs Run
GR-CLN-LDT; GR-AIT

22. Was Well Cored
NO

23. CASING RECORD (Report all strings set in well)

CASING SIZE	WEIGHT LB./FT.	DEPTH SET	HOLE SIZE	CEMENTING RECORD	AMOUNT PULLED
11-3/4"	42#	343'	14-3/4"	320 SX CIRC TO SURF	0
8-5/8"	32#	3240'	11"	1350 SX CIRC TO SURF	0
5-1/2"	15.5#/17#	7242'	7-7/8"	895 SX TOC @ 3180' TS	0

24. LINER RECORD

SIZE	TOP	BOTTOM	SACKS CEMENT	SCREEN

25. TUBING RECORD

SIZE	DEPTH SET	PACKER SET
2-7/8"	7074'	

26. Perforation record (interval, size, and number)
6808' - 6816' 0.380 16 HOLES
6876' - 6880' 0.380 8 HOLES
7090' - 7100' 0.380 20 HOLES

27. ACID, SHOT, FRACTURE, CEMENT, SQUEEZE, ETC.

DEPTH INTERVAL	AMOUNT AND KIND MATERIAL USED
6808' - 6880'	106,732 GAL PW + 8,832# 14/30
	LITE PROP
7090' - 7100'	113,744 GAL PW+ 10,000# 14/30

28. PRODUCTION

Date First Production	Production Method (Flowing, gas lift, pumping - Size and type pump)	Well Status (Prod. or Shut-in)
11/01/2006	PUMPING	PRODUCING

Date of Test	Hours Tested	Choke Size	Prod'n For Test Period	Oil - Bbl	Gas - MCF	Water - Bbl.	Gas - Oil Ratio
11/09/2006	24	16/64"		60	100	195	

Flow Tubing Press.	Casing Pressure	Calculated 24-Hour Rate	Oil - Bbl.	Gas - MCF	Water - Bbl.	Oil Gravity - API - (Corr.)
150	640		60	100	195	

29. Disposition of Gas (Sold, used for fuel, vented, etc.)
SOLD

Test Witnessed By

30. List Attachments
LOGS/C104, INCLINATION REPORT

31. I hereby certify that the information shown on both sides of this form as true and complete to the best of my knowledge and belief

Signature

Printed Name CINDI GOODMAN

Title PRODUCTION CLERK

Date 11/14/2006

E-mail Address cdgoodman@basspet.com

INSTRUCTIONS

This form is to be filed with the appropriate District Office of the Division not later than 20 days after the completion of any newly-drilled or deepened well. It shall be accompanied by one copy of all electrical and radio-activity logs run on the well and a summary of all special tests conducted, including drill stem tests. All depths reported shall be measured depths. In the case of directionally drilled wells, true vertical depths shall also be reported. For multiple completions, items 25 through 29 shall be reported for each zone. The form is to be filed in quintuplicate except on state land, where six copies are required. See Rule 1105.

INDICATE FORMATION TOPS IN CONFORMANCE WITH GEOGRAPHICAL SECTION OF STATE

Southeastern New Mexico		Northwestern New Mexico	
T. Anhy	T. Canyon	T. Ojo Alamo	T. Penn "B"
T. Salt 360'	T. Strawn	T. Kirtland-Fruitland	T. Penn. "C"
B. Salt 3010'	T. Atoka	T. Pictured Cliffs	T. Penn. "D"
T. Yates	T. Miss	T. Cliff House	T. Leadville
T. 7 Rivers	T. Devonian	T. Menefee	T. Madison
T. Queen	T. Silurian	T. Point Lookout	T. Elbert
T. Grayburg	T. Montoya	T. Mancos	T. McCracken
T. San Andres	T. Simpson	T. Gallup	T. Ignacio Otzte
T. Glorieta	T. McKee	Base Greenhorn	T. Granite
T. Paddock	T. Ellenburger	T. Dakota	T.
T. Blinberry	T. Gr. Wash	T. Morrison	T.
T. Tubb	T. Delaware 3236' Mt. group	T. Todilto	T.
T. Drinkard	T. Bone Springs 6964' lime	T. Entrada	T.
T. Abo	T. CHERRY CYN 4090'	T. Wingate	T.
T. Wolfcamp	T. BRUSHY CYN 5365'	T. Chinle	T.
T. Penn	T. AVALON SND 7070'	T. Permian	T.
T. Cisco (Bough C)	T. AVALON SND 7118'	T. Penn "A"	T.

OIL OR GAS SANDS OR ZONES

No. 1, from.....to..... No. 3, from.....to.....
No. 2, from.....to..... No. 4, from.....to.....

IMPORTANT WATER SANDS

Include data on rate of water inflow and elevation to which water rose in hole.

No. 1, from.....to.....feet.....
 No. 2, from.....to.....feet.....
 No. 3, from.....to.....feet.....

LITHOLOGY RECORD (Attach additional sheet if necessary)

From	To	Thickness In Feet	Lithology

DISTRICT I
Hobbs, NM 88240

DISTRICT II
Artesia, NM 88210

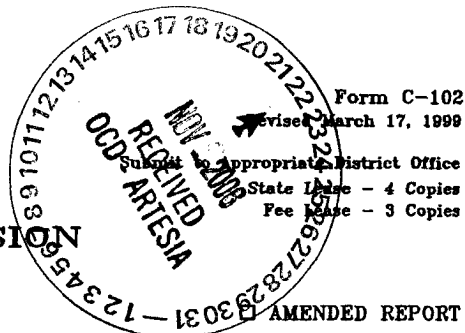
DISTRICT III
1000 Rio Brazos Rd., Aztec, NM 87410

DISTRICT IV
2040 South Pacheco, Santa Fe, NM 87505

State of New Mexico
Energy, Minerals and Natural Resources Department

OIL CONSERVATION DIVISION

2040 South Pacheco
Santa Fe, New Mexico 87504-2088



WELL LOCATION AND ACREAGE DEDICATION PLAT

API Number 30-015-34634	Pool Code 47545	Pool Name Nash Draw (Delaware/BS/Avalon Sand)
Property Code 26997	Property Name REMUDA BASIN "24" STATE	Well Number 5
OGRID No. 001801	Operator Name BEPCO, L.P.	Elevation 3018'

Surface Location

UL or lot No.	Section	Township	Range	Lot Idn	Feet from the	North/South line	Feet from the	East/West line	County
H	24	23 S	29 E		1730	NORTH	860	EAST	EDDY

Bottom Hole Location If Different From Surface

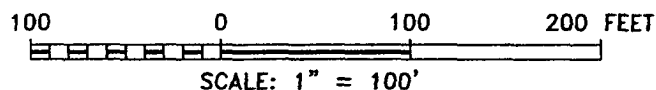
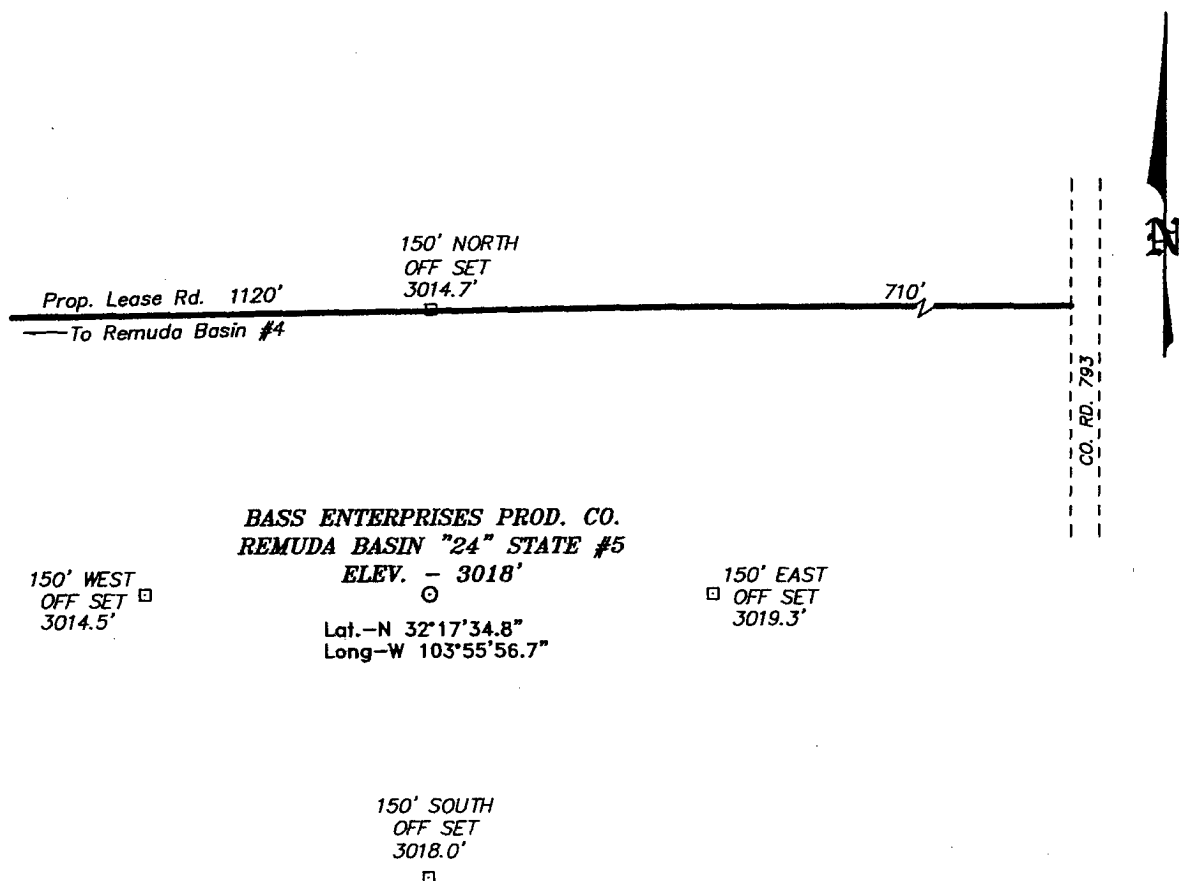
UL or lot No.	Section	Township	Range	Lot Idn	Feet from the	North/South line	Feet from the	East/West line	County

Dedicated Acres 40	Joint or Infill N	Consolidation Code	Order No.
-----------------------	----------------------	--------------------	-----------

NO ALLOWABLE WILL BE ASSIGNED TO THIS COMPLETION UNTIL ALL INTERESTS HAVE BEEN CONSOLIDATED
OR A NON-STANDARD UNIT HAS BEEN APPROVED BY THE DIVISION

				OPERATOR CERTIFICATION I hereby certify the the information contained herein is true and complete to the best of my knowledge and belief. Signature: <u>W.R. DANNELS</u> Printed Name: <u>W.R. DANNELS</u> Title: <u>DIVISION DRILLING SUPT.</u> Date: <u>12/12/05</u>	
				SURVEYOR CERTIFICATION I hereby certify that the well location shown on this plat was plotted from field notes of actual surveys made by me or under my supervision, and that the same is true and correct to the best of my belief. NOVEMBER 30, 2005 Date Surveyed: <u>NOV 30 2005</u> Signature & Seal of Professional Surveyor: <u>GARY L. JONES</u> W.O. No. <u>6008</u> Certificate No. <u>7977</u> BASIN SURVEYS	

SECTION 24, TOWNSHIP 23 SOUTH, RANGE 29 EAST, N.M.P.M.,
EDDY COUNTY, NEW MEXICO.



DIRECTIONS TO LOCATION:

FROM THE JUNCTION OF STATE HWY 128 AND CO. RD. 793, GO SOUTH FOR 3.1 MILES TO PROPOSED LEASE ROAD.

BASS ENTERPRISES PRODUCTION CO.

REF: REMUDA BASIN "24" STATE No. 5 / Well Pad Topo

REMUDA BASIN "24" STATE No. 5 LOCATED 1730' FROM
THE NORTH LINE AND 860' FROM THE EAST LINE OF
SECTION 24, TOWNSHIP 23 SOUTH, RANGE 29 EAST,
N.M.P.M., EDDY COUNTY, NEW MEXICO.

BASIN SURVEYS P.O. BOX 1786—HOBBS, NEW MEXICO

W.O. Number: 6008 Drawn By: K. GOAD

11-30-2005 Date: K.I.G. CD#7 - 6008A.DWG

Survey Date: 11-30-2005 Sheet 1 of 1 Sheets