

District I

1625 N. French Dr., Hobbs, NM 88240

District II

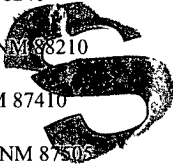
1301 W. Grand Avenue, Artesia, NM 88210

District III

1000 Rio Brazos Road, Aztec, NM 87410

District IV

1220 S. St. Francis Dr., Santa Fe, NM 87505



State of New Mexico
Energy Minerals and Natural Resources

SEP 17 2007

Form C-101
May 27, 2004

Oil Conservation Division
1220 South St. Francis Dr.
Santa Fe, NM 87505

Submit to appropriate District Office
OCD-ARTEZIA

AMENDED REPORT

APPLICATION FOR PERMIT TO DRILL, RE-ENTER, DEEPEN, PLUGBACK, OR ADD A ZONE

¹ Operator Name and Address COG OPERATING LLC 550 W. Texas, Suite 1300 Midland, TX 79701		² OGRID Number 299137
		³ API Number 30 -015-32412
³ Property Code 302472	Property Name Continental A State	Well No. 10
⁹ Proposed Pool 1 Empire; Yeso 96210		¹⁰ Proposed Pool 2

⁷ Surface Location

UL or lot no 1	Section 30	Township 17S	Range 29E	Lot Idn	Feet from the 990	North/South line North	Feet from the 330	East/West line West	County Eddy
-------------------	---------------	-----------------	--------------	---------	----------------------	---------------------------	----------------------	------------------------	----------------

⁸ Proposed Bottom Hole Location If Different From Surface

UL or lot no.	Section	Township	Range	Lot Idn	Feet from the	North/South line	Feet from the	East/West line	County
---------------	---------	----------	-------	---------	---------------	------------------	---------------	----------------	--------

Additional Well Information

¹¹ Work Type Code D	¹² Well Type Code O	¹³ Cable/Rotary R	¹⁴ Lease Type Code S	¹⁵ Ground Level Elevation 3676
¹⁶ Multiple No	¹⁷ Proposed Depth 5450	¹⁸ Formation Yeso	¹⁹ Contractor	²⁰ Spud Date as soon as approved
Depth to Groundwater 115'		Distance from nearest fresh water well >1000'		Distance from nearest surface water >1000'
Pit: Liner: Synthetic <input checked="" type="checkbox"/> 12_mils thick Clay <input type="checkbox"/> Pit Volume: 5000_bbls Drilling Method:				
Closed-Loop System <input type="checkbox"/> Fresh Water <input type="checkbox"/> Brine <input checked="" type="checkbox"/> Diesel/Oil-based <input type="checkbox"/> Gas/Air <input type="checkbox"/>				

²¹ Proposed Casing and Cement Program

Hole Size	Casing Size	Casing weight/foot	Setting Depth	Sacks of Cement	Estimated TOC
17 1/2"	13 3/8"	48	308	325	Surface
12 1/4"	8 5/8"	24	820	500	Surface
7 7/8"	5 1/2"	17	4340	9400	
	4"	11.3	5450	115	4250
	2 7/8 tbg	5350'			

²² Describe the proposed program. If this application is to DEEPEN or PLUG BACK, give the data on the present productive zone and proposed new productive zone. Describe the blowout prevention program, if any. Use additional sheets if necessary.

COG Operating proposes to deepen this Yeso well in the Yeso formation:

- MIRU rig. PU 4-3/4" bit & drill 4-3/4" hole w/ cut brine from 4350' - 5450'.
- RIH w/ logs & log from TD to 4350'.
- Run 4" 11.3# casing set @ 5450'. Cement csg w/ 115 sx C from TD to 4250'.
- Perf Yeso @ 5100' - 5300', 2 SPF, 30 holes & acidize w/ 2500 gallons acid. Frac w/ 72,200# sand.
- Set plug @ 4990'.
- Perf Yeso @ 4700' - 4900', 2 SPF, 30 holes & acidize w/ 2500 gallons acid. Frac w/ 72,200# sand.
- Drill out plug @ 4990'. Cut 4" csg @ 4200'. POH w/ 4" csg. Leave 4" liner from 4200' to 5450' TD.
- RIH w/ tbg. EOT @ 5350'. RIH w/ rods & pump.
- Restore well to production producing from 3846' - 4200.5' and 4700' - 5300'.

²³ I hereby certify that the information given above is true and complete to the best of my knowledge and belief. I further certify that the drilling pit will be constructed according to NMOCDC guidelines , a general permit , or an (attached) alternative OCD-approved plan .

OIL CONSERVATION DIVISION

Approved by:

BRYAN G. ARRANT

DISTRICT II GEOLOGIST

Printed name: Phyllis A. Edwards, Regulatory Analyst

Title:

Approval Date: SEP 18 2007

Expiration Date: SEP 18 2008

E-mail Address: pedwards@conchoresources.com

Date: 9-17-07

Phone: 432-685-4340

Conditions of Approval Attached

DISTRICT I
P.O. Box 1868, Hobbs, NM 88241-1868

DISTRICT II
P.O. Box 100, Artesia, NM 88211-0100

DISTRICT III
1000 Rio Grande Rd., Altec, NM 87410

DISTRICT IV
P.O. Box 2088, Santa Fe, N.M. 87504-2088

State of New Mexico
Energy, Minerals and Natural Resources Department

OIL CONSERVATION DIVISION
P.O. Box 2088
Santa Fe, New Mexico 87504-2088

Form C-102
Revised February 10, 1994
Submit to Appropriate District Office
State Lease - 4 Copies
Fee Lease - 3 Copies

WELL LOCATION AND ACREAGE DEDICATION PLAT

AMENDED REPORT

API Number 30-015-32412	Pool Code 96210	Pool Name EMPIRE YESO
Property Code 302472	Property Name CONTINENTAL A STATE	Well Number 10
OGED No. 229137	Operator Name COG OPERATING LLC	Elevation 3676'

Surface Location

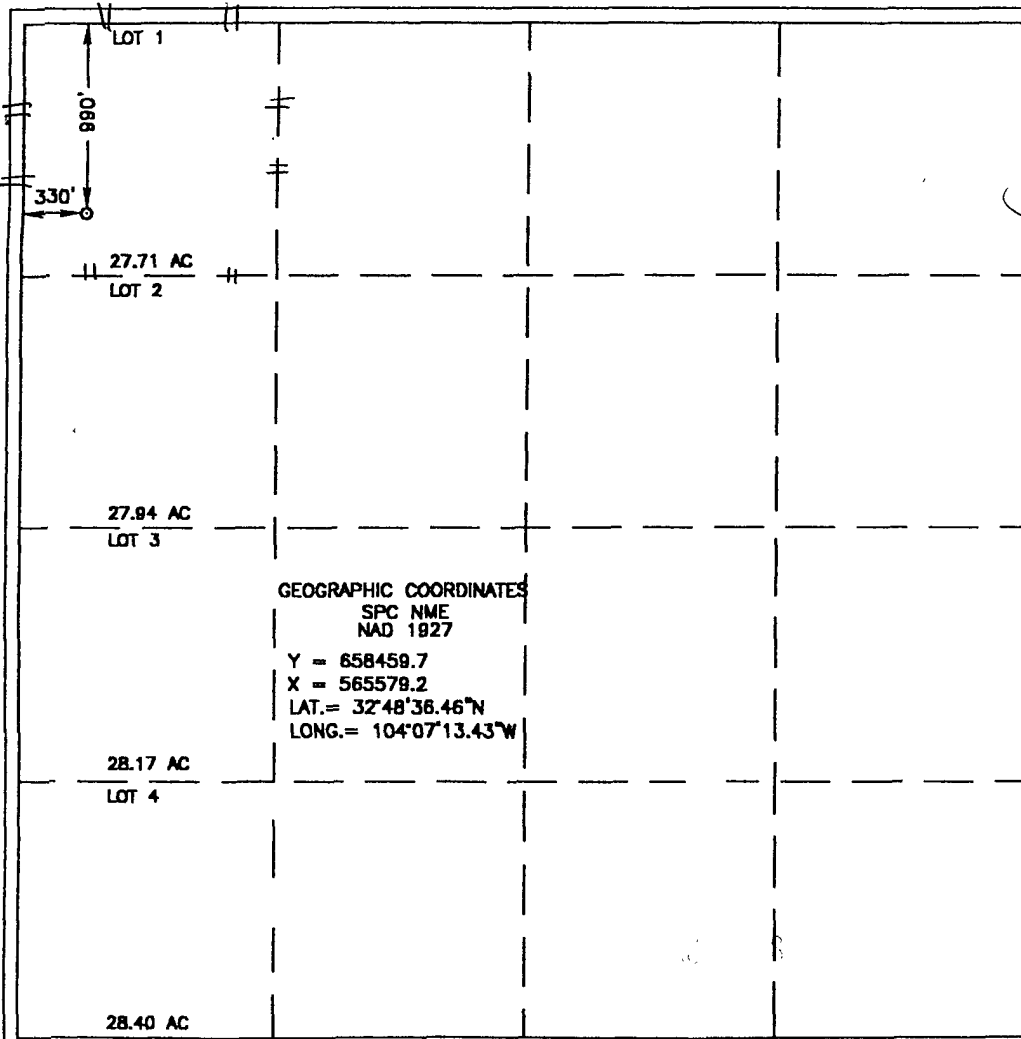
UL or lot No.	Section	Township	Range	Lot Idn	Feet from the	North/South line	Feet from the	East/West line	County
1	30	17-S	29-E		990	NORTH	330	WEST	EDDY

Bottom Hole Location If Different From Surface

UL or lot No.	Section	Township	Range	Lot Idn	Feet from the	North/South line	Feet from the	East/West line	County

Dedicated Acres 27.71	Joint or Infill	Consolidation Code	Order No.
--------------------------	-----------------	--------------------	-----------

NO ALLOWABLE WILL BE ASSIGNED TO THIS COMPLETION UNTIL ALL INTERESTS HAVE BEEN CONSOLIDATED OR A NON-STANDARD UNIT HAS BEEN APPROVED BY THE DIVISION



OPERATOR CERTIFICATION

I hereby certify that the information contained herein is true and complete to the best of my knowledge and belief.

Phyllis A. Edwards
Signature

PHYLLIS A. EDWARDS
Printed Name

REGULATORY ANALYST
Title

9-14-07
Date

SURVEYOR CERTIFICATION

I hereby certify that the well location shown on this plat was plotted from field notes of actual surveys made by me or under my supervision, and that the same is true and correct to the best of my belief.

AUGUST 07, 2002
Date Surveyed

AWB
Signature & Seal of Professional Surveyor

Ronald J. Edson 8/08/02
02.11.0554

Certificate No. RONALD J. EDSON 3239
GARY EDSON 12641

COG OPERATING LLC
550 W. Texas, Suite 1300
Midland, TX 79701

432-683-7443 P
432-685-4399 F

September 14, 2007

New Mexico Oil Conservation Division
Attn: Bryan Arrant
1301 W. Grand Avenue
Artesia, NM 88210

Re: Statewide Rule 118
Hydrogen Sulfide Gas Contingency Plan
Continental A State #10 – Deepen Yeso well

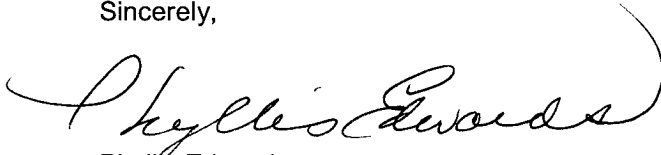
Dear Bryan,

In accordance with NMAC 19.15.3.118 C (1) governing the determination of the hydrogen sulfide concentration in gaseous mixtures in each of its operations, COG Operating LLC does not anticipate that there will be enough H₂S in deepening the Yeso formation to meet the OCD's minimum requirements for the submission of a contingency plan for the drilling and completion of the following test:

Continental A State #10
990 FNL & 330 FWL Section 30, T17S, R29E Lot 1 Eddy County, NM

Please call, e-mail, or fax me if you need anything further to approve this APD, and I thank you in advance for your cooperation in this matter.

Sincerely,



Phyllis Edwards
Regulatory Analyst

432-685-4340 phone
432-685-4399 fax
pedwards@conchoresources.com

Enclosures

Phyllis,
I have approved this application on 9/18/2007.
It will be on our web site when it gets scanned
sometime in the near future.
Just be sure the perms don't go into the Tubb formation.
See ya,

Bryan G. Arrant
District II Geologist
New Mexico Oil Conservation Division
1301 West Grand Ave.
Artesia, NM 88210
505-748-1283 Ext. 103

From: Phyllis Edwards [mailto:PEdwards@conchoresources.com]
Sent: Thursday, September 20, 2007 8:32 AM
To: Arrant, Bryan, EMNRD
Subject: Continental A State #10 - Deepen C-101

Bryan,

I am unable to get through on the phone – the message says, “transfer cannot be completed – try again later – please disconnect”.

So, I am e-mailing you about the Continental A State #10 30-015-32412. COG wants to deepen this Yeso completion – the work will still be in the Yeso. I sent the C-101, C-102, & H2S letter on 9-14-07. I just wondered if you received it, and if you needed anything else from COG.

The engineer wants to begin work as soon as the C-101 is approved.

Thanks so much for your help !!!

Phyllis Edwards

COG Operating LLC
Fasken Tower II
550 W. Texas Avenue, Suite 1300
Midland, TX 79701
432-685-4340 P
432-685-4399 F
pedwards@conchoresources.com

This inbound email has been scanned by the MessageLabs Email Security System.

9/20/2007