

Submit 3 Copies to Appropriate District Office  
District I  
1625 N French Dr., Hobbs, NM 88240  
District II  
1301 W. Grand Ave., Artesia, NM 88210  
District III  
1000 Rio Brazos Rd., Aztec, NM 87410  
District IV  
1220 S. St. Francis Dr., Santa Fe, NM 87505

State of New Mexico  
Energy, Minerals and Natural Resources

Form C-103  
May 27, 2004

OIL CONSERVATION DIVISION  
1220 South St. Francis Dr.  
Santa Fe, NM 87505



OCT 10 2007

WELL API NO. <b>30-015-31560</b>	
5. Indicate Type of Lease <b>FEDERAL</b> STATE <input type="checkbox"/> FEE <input type="checkbox"/>	
6. State Oil & Gas Lease No.	
7. Lease Name or Unit Agreement Name <b>JENKINS B FEDERAL</b>	
8. Well Number <b>13</b>	
9. OGRID Number <b>229137</b>	
10. Pool name or Wildcat	

<b>SUNDRY NOTICES AND REPORTS ON WELLS</b> (DO NOT USE THIS FORM FOR PROPOSALS TO DRILL OR TO DEEPEN OR PLUG BACK TO A DIFFERENT RESERVOIR. USE "APPLICATION FOR PERMIT" (FORM C-101) FOR SUCH PROPOSALS.)	
1. Type of Well: Oil Well <input type="checkbox"/> Gas Well <input checked="" type="checkbox"/> Other <b>Water Injection</b>	
2. Name of Operator <b>COG Operating LLC</b>	
3. Address of Operator <b>550 W. Texas Ave., Suite 1300 Midland, TX 79701</b>	
4. Well Location Unit Letter <b>E</b> : <b>2310</b> feet from the <b>North</b> line and <b>880</b> feet from the <b>West</b> line Section <b>20</b> Township <b>17S</b> Range <b>30E</b> NMPM <b>Eddy</b> County	
11. Elevation (Show whether DR, RKB, RT, GR, etc.) <b>3624</b>	
Pit or Below-grade Tank Application <input type="checkbox"/> or Closure <input type="checkbox"/>	
Pit type _____ Depth to Groundwater _____ Distance from nearest fresh water well _____ Distance from nearest surface water _____	
Pit Liner Thickness: _____ mil Below-Grade Tank: Volume _____ bbls; Construction Material _____	

12. Check Appropriate Box to Indicate Nature of Notice, Report or Other Data

<b>NOTICE OF INTENTION TO:</b>		<b>SUBSEQUENT REPORT OF:</b>	
PERFORM REMEDIAL WORK <input type="checkbox"/>	PLUG AND ABANDON <input type="checkbox"/>	REMEDIAL WORK <input type="checkbox"/>	ALTERING CASING <input type="checkbox"/>
TEMPORARILY ABANDON <input type="checkbox"/>	CHANGE PLANS <input type="checkbox"/>	COMMENCE DRILLING OPNS. <input type="checkbox"/>	P AND A <input type="checkbox"/>
PULL OR ALTER CASING <input type="checkbox"/>	MULTIPLE COMPL <input type="checkbox"/>	CASING/CEMENT JOB <input type="checkbox"/>	
OTHER: <input type="checkbox"/>		OTHER: <b>Convert to injection</b> <input checked="" type="checkbox"/>	

13. Describe proposed or completed operations. (Clearly state all pertinent details, and give pertinent dates, including estimated date of starting any proposed work). SEE RULE 1103. For Multiple Completions: Attach wellbore diagram of proposed completion or recompletion.

SEE ATTACHMENT

9- 28 -07 OCD Field Inspector District II representative Richard Inge gave verbal approval to proceed without him witnessing the MIT.  
COG representative Kent Greenway witnessed test. Chart is attached.

<b>PBTD</b>	<b>PKR DEPTH</b>	<b>BARRELS INJECTING</b>	<b>RATE</b>
4815	4217	500	500

I hereby certify that the information above is true and complete to the best of my knowledge and belief. I further certify that any pit or below-grade tank has been/will be constructed or closed according to NMOCD guidelines ☐, a general permit ☐ or an (attached) alternative OCD-approved plan ☐.

SIGNATURE Phyllis Edwards TITLE Regulatory Analyst DATE 10/5/07

Type or print name Phyllis Edwards E-mail address: pedwards@conchoresources.com Telephone No. 432-685-4340  
**For State Use Only**

APPROVED BY: Richard Inge TITLE COMPLIANCE OFFICER DATE 10/22/2007  
Conditions of Approval (if any):

C-103 ATTACHMENT  
CONVERT TO INJECTION

JENKINS B FEDERAL #13  
API 30-015-31560

CONVERT TO INJECTION WELL

- 08/23/07 Test/tag anchors. MIRU Eunice Wel Service WSU. Lock-out/tag-out power. Bridle down, release pump, LD 22' 1 1/4" polish rod, LD 185 - 3/4" steel rods, 2 1/2" X 2" X 20' insert pump. MIRU reverse unit, frac tank. Pump 60 bbls LSW via annulus. ND larkin type head. Release tubing anchor. NU BOP. Release TA. Tally out 151 jts 2 7/8" tbg. PU 4 3/4" bit, casing scraper. TIH to 4,000'. SDFN.
- 08/24/07 SITP - 130 psi. Blow down. TIH, tag PBTD @ 4,838'. Pump 200 bbls, no circ. TOOH. PU CIBP, set @ 4,237'. TOOH. PU treating packer. TIH, set packer @ 4,143'. Load tbg w 18 bbls LSW. Pressure test CIBP, tubing to 1,500 psi for 30 min. TOOH. SDFWE.
- 08/27/07 SICP - 60 psi. Blow down. PU EZ drill cement retainer. TIH on tbg. Set @ 3,830'. Establish injection rate of 1,650 psi @ 1.5 bpm. Wait on cement eqp.. Pump 40 bbls LSW. Mix 80 sacks Class C plus additives @ 14.8#/gal. Displace tbg w LSW @ 1/2 bpm, Squeeze to 2,400 psi. Sting out of retainer. TOOH. SDFN.
- 08/28/07 SICP - 40 psi. Blow down. PU EZ drill cement retainer. TIH on tbg. Set @ 3,335'. Establish injection rate of vacuum @ 5 bpm. Pump 40 bbls LSW. Mix 300 sacks Class C plus additives @ 14.8#/gal. Displace tbg w LSW @ <1 bpm, No pressure, overdisplace w 20 bbls. Wait on cement. Mix and pump 300 sks Class C neat @ 14.8#/gal. Squeeze to 2,000 psi with 255 sks below retainer. Sting out of retainer. TOOH. Pump 120 bbl @ 5 bpm down casing. SIFN. Prepare to squeeze third set Wednesday AM.
- 08/29/07 SICP - 0 psi. PU EZ drill cement retainer. TIH on tbg. Set @ 3,021'. Load and pressure annulus to 500 psi. Establish injection rate of vacuum @ 5 bpm. Pump 30 bbls LSW. Mix 300 sacks Class C plus additives @ 14.8#/gal. Displace tbg w LSW @ <1/2 bpm, No pressure, overdisplace w 20 bbls. Wait on cement. Mix and pump 300 sks Class C + 150# CaCl<sub>2</sub> @ 14.8#/gal. Squeeze to 1,650 psi with 235 sks below retainer. Sting out of retainer. Reverse 12 1/2 bbls cement to tank. TOOH, LD stinger. PU new 4 3/4" bit, sub, 6 - 3 1/2" DCs, XO, 50 jts tbg. SDFN.
- 08/30/07 SICP - 0 psi. TIH, tag cement @ 3,015'. Pressure test casing 500 psi for 40 min. Drill cement/cement retainer/cement to 3,152' SDFN.
- 08/31/07 SICP - 0. Drill cement retainers/cement to 3,890'. Stand back 20 stands. SDFWE.
- 09/04/07 SICP - 0. PU packer, TIH, set @ 3050'. Pressure annulus to 625 psi, holds good. Pressure test casing. Very slow bleed off: 500 psi to 400 psi in 10 min, Pressure to 2,000 psi. Bleed to 1,200 in 10 min. TOOH, LD packer. TIH, spot 35 sks Class H cement w FL from 3,241' to 3,000'. TOOH. PU packer, TIH to 1,500 psi. Pressure to 1,350 psi. Watch 1 hr. SI tbg. SDFN.

## C-103 ATTACHMENT - PAGE 2

09/05/07 SICP - 0, SITP - 0. Release packer, TOOH. PU 4 3/4" bit, 6 - 3 1/8" collars, 2 7/8" tbg. Close BOP, pressure test casing to 500 psi for 30 min. Tag cement top @ 3,000'. Drill cement to retainer @ 3,335'. Close BOP, pressure squeeze/csg to 500 psi for 30 min. SDFN.

09/06/07 SICP - 0, SITP - 0. Drill out cement retainer, cement to 3,500'. TOOH, bit worn. PU new 4 3/4" Varrel bit, TIH. SIFN

09/07/07 SICP - 0. Drill cement to 3,830' Pressure test casing. RE-test. Shut down to let fluid settle and bring in chart recorder. SIFN

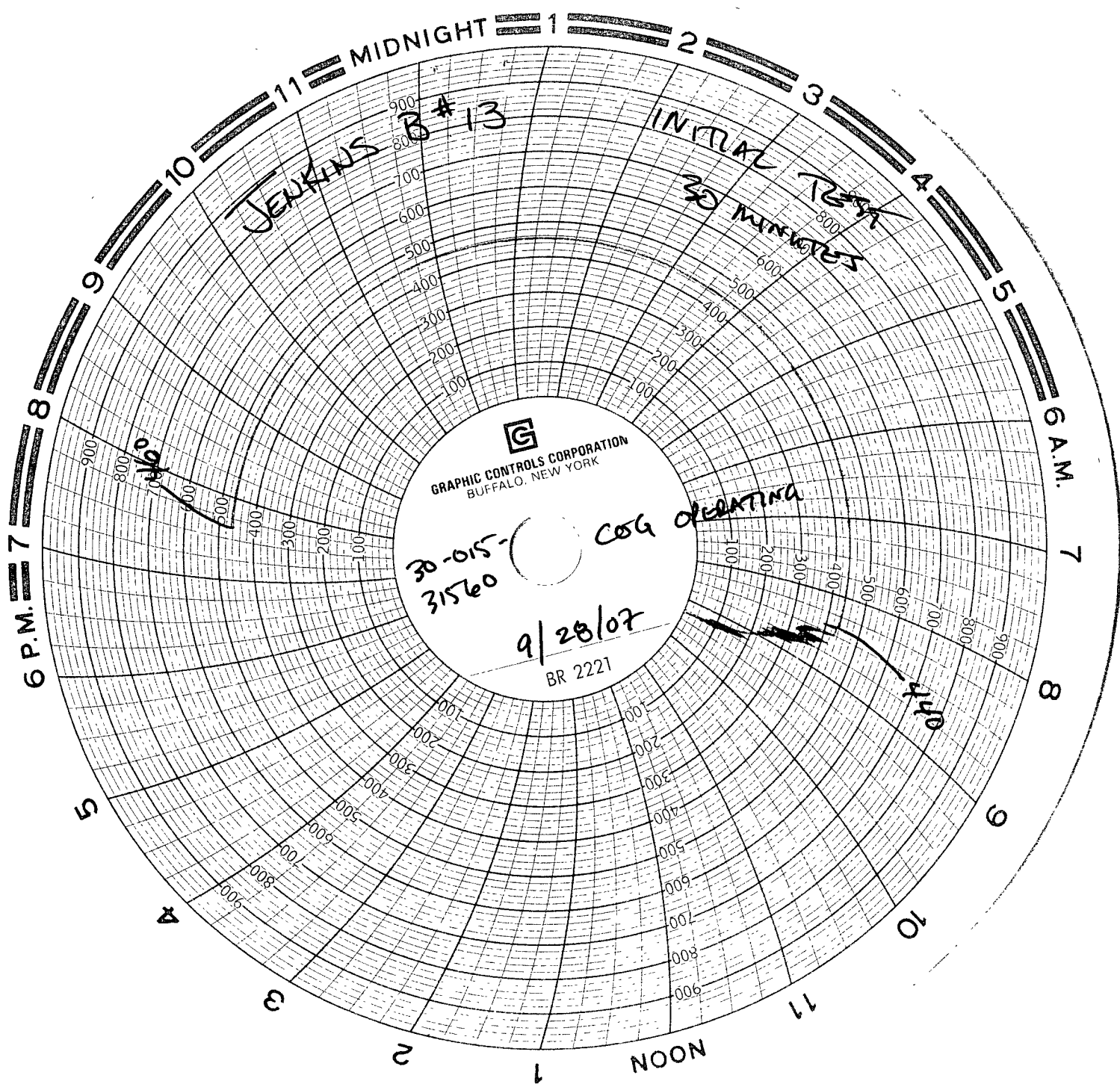
09/08/07 SITP - 0. Pressure test casing to 500 psi, 30 min, 18 psi bleed-off. Drill cement retainer/cement to 3910'. SDFN.

09/10/07 SITP - 0. Drill cement to CIBP @ 4,237' Pressure test casing to 500 psi, 30 min, <20 psi bleed-off. Drill CIBP retainer/cement. Casing on strong vacuum. Push plug to PBTD @ 4,815'. Pump 200 bbls via csg. TOOH. LD bit, collars. PU Arrowset packer, SN, 135 jts tbg. Set packer @ 4,236'. Load and pressure annulus. SIFN

09/11/07 SITP - 240 psi. SICP - 0. Pressure and monitor annulus 200 psi. Acidize via tbg w 2,500 gal 15% HCl NeFe carrying 150 7/8" 1.3SG RCN ballsealers @ 6 bpm, 100 psi. Flush plus overflush with 76 bbls LSW. ISIP - strong vacuum. Release packer. TIH w 7 stands to knock off balls. Repair rig. LD 2 7/8" tbg, packer. SIFN

09/12/07 SICP - 200 psi. Blow down to tank. PU PC WLRG, PC AS1X packer, PC 2.25" SN, 137 jts PC 2 7/8" tbg. Set packer @ 4,217' in 10K tension. Load and pressure annulus. ND BOP. NU wellhead. Schedule MIT test for Friday AM.

**FINAL REPORT**



JENKINS B#13

INITIAL TEST  
30 MINUTES

GRAPHIC CONTROLS CORPORATION  
BUFFALO, NEW YORK

30-015-31560

COG OPERATING

9/28/07

BR 2221

140

140