

|         |          |          |           |      |        |
|---------|----------|----------|-----------|------|--------|
| DATE IN | SUSPENSE | ENGINEER | LOGGED IN | TYPE | APP NO |
|---------|----------|----------|-----------|------|--------|

ABOVE THIS LINE FOR DIVISION USE ONLY

## NEW MEXICO OIL CONSERVATION DIVISION

- Engineering Bureau -

1220 South St. Francis Drive, Santa Fe, NM 87505



30 015 34634

### ADMINISTRATIVE APPLICATION CHECKLIST

THIS CHECKLIST IS MANDATORY FOR ALL ADMINISTRATIVE APPLICATIONS FOR EXCEPTIONS TO DIVISION RULES AND REGULATIONS WHICH REQUIRE PROCESSING AT THE DIVISION LEVEL IN SANTA FE

#### Application Acronyms:

**[NSL-Non-Standard Location]** **[NSP-Non-Standard Proration Unit]** **[SD-Simultaneous Dedication]**  
**[DHC-Downhole Commingling]** **[CTB-Lease Commingling]** **[PLC-Pool/Lease Commingling]**  
**[PC-Pool Commingling]** **[OLS - Off-Lease Storage]** **[OLM-Off-Lease Measurement]**  
**[WFX-Waterflood Expansion]** **[PMX-Pressure Maintenance Expansion]**  
**[SWD-Salt Water Disposal]** **[IPI-Injection Pressure Increase]**  
**[EOR-Qualified Enhanced Oil Recovery Certification]** **[PPR-Positive Production Response]**

#### [1] TYPE OF APPLICATION - Check Those Which Apply for [A]

[A] Location - Spacing Unit - Simultaneous Dedication  
☐ NSL ☐ NSP ☐ SD

Check One Only for [B] or [C]

[B] Commingling - Storage - Measurement  
☒ DHC ☐ CTB ☐ PLC ☐ PC ☐ OLS ☐ OLM

[C] Injection - Disposal - Pressure Increase - Enhanced Oil Recovery  
☐ WFX ☐ PMX ☐ SWD ☐ IPI ☐ EOR ☐ PPR

[D] Other: Specify \_\_\_\_\_

#### [2] NOTIFICATION REQUIRED TO: - Check Those Which Apply, or ☒ Does Not Apply

- [A] ☐ Working, Royalty or Overriding Royalty Interest Owners  
 [B] ☐ Offset Operators, Leaseholders or Surface Owner  
 [C] ☐ Application is One Which Requires Published Legal Notice  
 [D] ☐ Notification and/or Concurrent Approval by BLM or SLO  
U S Bureau of Land Management - Commissioner of Public Lands, State Land Office  
 [E] ☐ For all of the above, Proof of Notification or Publication is Attached, and/or,  
 [F] ☐ Waivers are Attached

#### [3] SUBMIT ACCURATE AND COMPLETE INFORMATION REQUIRED TO PROCESS THE TYPE OF APPLICATION INDICATED ABOVE.

[4] **CERTIFICATION:** I hereby certify that the information submitted with this application for administrative approval is **accurate** and **complete** to the best of my knowledge. I also understand that **no action** will be taken on this application until the required information and notifications are submitted to the Division.

**Note:** Statement must be completed by an individual with managerial and/or supervisory capacity.

Kanicia Carrillo

Print or Type Name

Signature

Regulatory Analyst

Title

11/16/07

Date

kcarrillo@conchoresources.com  
 e-mail Address



November 16, 2007

New Mexico Oil Conservation Division  
Attn: Will Jones  
1220 South St. Francis Drive  
Santa Fe, NM 87505

Re: Request for Down Hole Commingling and Measurement of Hydrocarbon Production for:  
Aladdin 11 State #1  
Eddy County, NM  
API # 30-015-34654

Pools:  
Undes Hills, Atoka (97398) and Hess; Morrow, East (79380)

Dear Mr. Jones,

COG Operating LLC as operator of the above mentioned well respectfully requests approval for down hole commingling and measurement of production.

COG proposes to commingle production from the above mentioned pools. Production will be measured at the Alladin 11 State #1 battery located in the NE/4 SW/4, Section 11, T24S, R23E. The lease has common interest in both pools. We are currently producing and testing out of the Undes Hills, Atoka. We have prior tests for the Hess; Morrow, East, which is the original pool. This pool is shut in using a RBP, set at 9650'.

Please contact me at 432-685-4332 or e-mail at [kcarrillo@conchoresources.com](mailto:kcarrillo@conchoresources.com) if you need additional information.

Thank you for your attention to this matter.

Sincerely,

COG Operating LLC

A handwritten signature in black ink, appearing to read "K. Carrillo", written over a horizontal line.

Kanicia Carrillo  
Regulatory Analyst

Attachments: C-107A and C-102's for both formations

District I

1625 N French Dr., Hobbs, NM 88240

District II

1301 W. Grand Ave., Artesia, NM 88210

District III

1000 Rio Brazos Rd., Aztec, NM 87410

District IV

1220 S St Francis Dr , Santa Fe, NM 87505

## State of New Mexico

## Energy, Minerals and Natural Resources

## Oil Conservation Division

1220 S. St Francis Dr.

Santa Fe, NM 87505

Form C-102  
Permit 16916

## WELL LOCATION AND ACREAGE DEDICATION PLAT

|                              |                                       |   |
|------------------------------|---------------------------------------|---|
| 1 API Number<br>30-015-34654 | 2 Pool Code<br>78380                  | 3. Pool Name<br>HESS;MORROW, EAST (GAS) |
| 4. Property Code<br>35472    | 5. Property Name<br>ALADDIN 11 STATE  | 6. Well No.<br>001                      |
| 7. OGRID No.<br>229137       | 8. Operator Name<br>COG OPERATING LLC | 9. Elevation<br>4380                    |

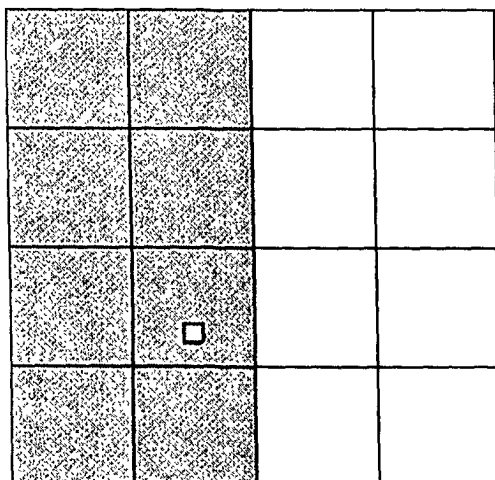
## 10. Surface Location

|               |               |                 |              |         |                   |               |                   |               |                |
|---------------|---------------|-----------------|--------------|---------|-------------------|---------------|-------------------|---------------|----------------|
| UL - Lot<br>K | Section<br>11 | Township<br>24S | Range<br>23E | Lot Idn | Feet From<br>1707 | N/S Line<br>S | Feet From<br>1950 | E/W Line<br>W | County<br>EDDY |
|---------------|---------------|-----------------|--------------|---------|-------------------|---------------|-------------------|---------------|----------------|

## 11. Bottom Hole Location If Different From Surface

|                              |                     |                        |              |         |           |          |           |          |        |
|------------------------------|---------------------|------------------------|--------------|---------|-----------|----------|-----------|----------|--------|
| UL - Lot                     | Section             | Township               | Range        | Lot Idn | Feet From | N/S Line | Feet From | E/W Line | County |
| 12 Dedicated Acres<br>320.00 | 13. Joint or Infill | 14. Consolidation Code | 15. Order No |         |           |          |           |          |        |

**NO ALLOWABLE WILL BE ASSIGNED TO THIS COMPLETION UNTIL ALL INTERESTS HAVE BEEN CONSOLIDATED OR A NON-STANDARD UNIT HAS BEEN APPROVED BY THE DIVISION**



## OPERATOR CERTIFICATION

*I hereby certify that the information contained herein is true and complete to the best of my knowledge and belief.*

E-Signed By: Diane Kuykendall

Title: Regulatory Analyst

Date: 2/27/2006

## SURVEYOR CERTIFICATION

*I hereby certify that the well location shown on this plat was plotted from field notes of actual surveys made by me or under my supervision, and that the same is true and correct to the best of my belief.*

Surveyed By: Ronald Eidson

Date of Survey: 9/27/2005

Certificate Number: 3239

# State of New Mexico

## DISTRICT I

1220 S. FRANCIS DR. ALBUQUERQUE, NM 87260

Energy, Minerals and Natural Resources Department

Form C-102

Revised JUNE 10, 2005

Submit to Appropriate District Office

State Lease - 4 Copies

Fee Lease - 3 Copies

## DISTRICT II

1301 W. GRAND AVENUE, ALBUQUERQUE, NM 87210

## OIL CONSERVATION DIVISION

1220 SOUTH ST. FRANCIS DR.

Santa Fe, New Mexico 87505

## DISTRICT III

1000 Rio Brason Rd., Aztec, NM 87410

## DISTRICT IV

1220 S. ST. FRANCIS DR. SANTA FE, NM 87505

## WELL LOCATION AND ACREAGE DEDICATION PLAT

☐ AMENDED REPORT

|                                   |  |  |
|-----------------------------------|--|--|
| API Number<br><b>30-015-34654</b> | Pool Code<br><b>97398</b>                  | Pool Name<br><b>Unders Hess Hills Atoka(Gas)</b> |
| Property Code<br><b>35472</b>     | Property Name<br><b>ALADDIN STATE 11</b>   | Well Number<br><b>1</b>                          |
| GRID No.<br><b>299137</b>         | Operator Name<br><b>COG OPERATING, LLC</b> | Elevation<br><b>4380'</b>                        |

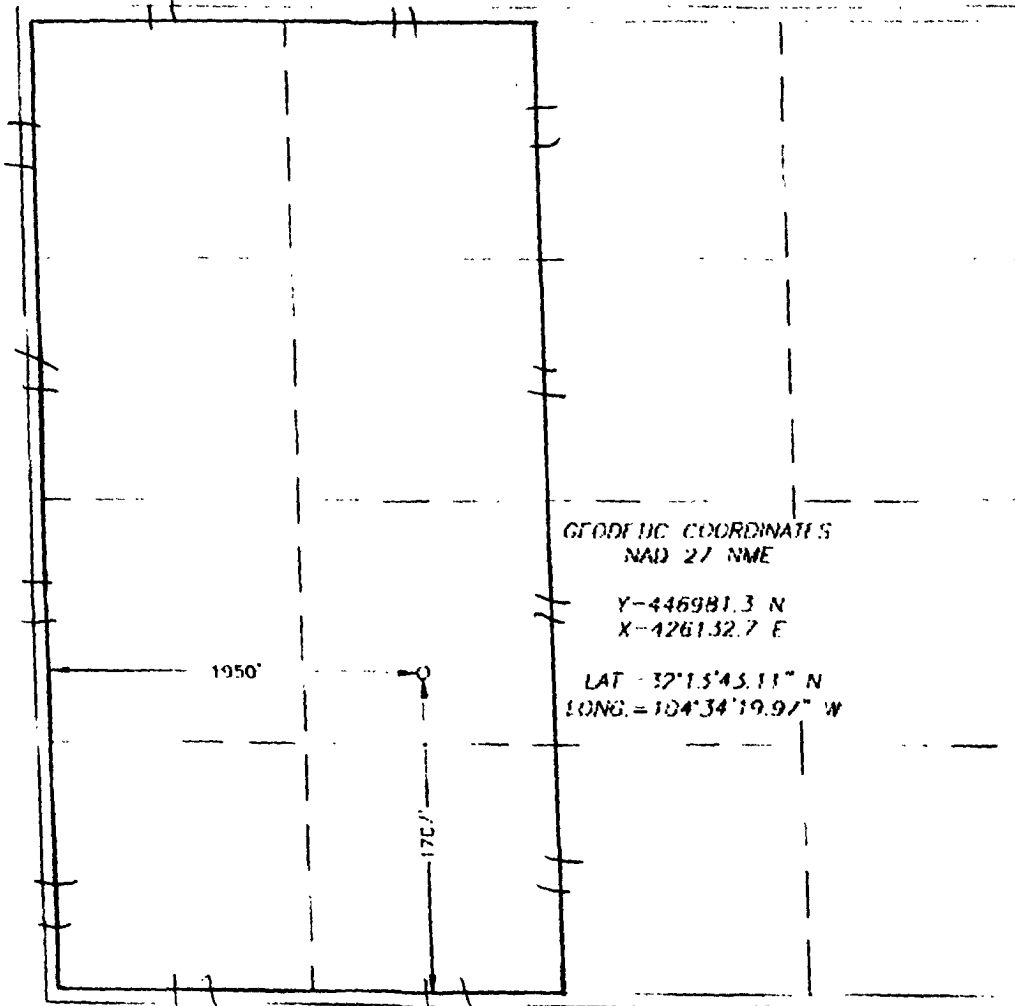
### Surface Location

| UL or lot No. | Section   | Township    | Range       | Lot Idn | Feet from the | North/South line | Feet from the | East/West line | County      |
|---------------|-----------|-------------|-------------|---------|---------------|------------------|---------------|----------------|-------------|
| <b>K</b>      | <b>11</b> | <b>24-S</b> | <b>23-E</b> |         | <b>1707</b>   | <b>SOUTH</b>     | <b>1950</b>   | <b>WEST</b>    | <b>EDDY</b> |

### Bottom Hole Location If Different From Surface

| UL or lot No.                 | Section         | Township           | Range     | Lot Idn | Feet from the | North/South line | Feet from the | East/West line | County |
|-------------------------------|-----------------|--------------------|-----------|---------|---------------|------------------|---------------|----------------|--------|
|                               |                 |                    |           |         |               |                  |               |                |        |
| Dedicated Acres<br><b>320</b> | Joint or Infill | Consolidation Code | Order No. |         |               |                  |               |                |        |

NO ALLOWABLE WILL BE ASSIGNED TO THIS COMPLETION UNTIL ALL INTERESTS HAVE BEEN CONSOLIDATED OR A NON-STANDARD UNIT HAS BEEN APPROVED BY THE DIVISION



### OPERATOR CERTIFICATION

I hereby certify that the information contained herein is true and complete to the best of my knowledge and belief

*[Signature]*  
Signature

**Kanicia Carrillo**  
Printed Name

**Regulatory Analyst**  
Title

**08/13/07**  
Date

### SURVEYOR CERTIFICATION

I hereby certify that the well location shown on this plat was plotted from field notes of actual surveys made by me or under my supervision and that the same is true and correct to the best of my belief

**RONALD J. EIDSON**  
Date: **08/13/07**  
Signature: *[Signature]*  
Professional Seal of **RONALD J. EIDSON**  
Professional Surveyor No. **5066**  
Date: **08/06/05**

Certificate No. **RONALD J. EIDSON 3239**